



XEN *Series*

	65XEN ;78XEN;
Mobile	80XENS ;100XENS;
elevating	80XEN ;100XEN;
work platform	120XEN ;140XEN;
	160XEN;160XENS.

Parts manual



Original Instruction

HANGCHA GROUP CO., LTD.

August, 2023

FOREWORD

Dear customers, thank you very much for your purchase of the XEN series Self-propelled elevating work platform of HANGCHA Group. Before you order accessories, please confirm the following conditions:

1、 Which model does the parts you want to order belong to。

Which system does the parts you want to order belong to。

2、 Locate the page number of the corresponding part or system in the catalog

3、 Find the serial number of the corresponding part in the figure on the page number, and find the code and name of the part in the table.

4、 In addition to the above information, we need to be informed of the corresponding quantity.

The legends and tables included in this manual are the latest versions at the time of preparation.

Due to the continuous update of products and technologies, the company reserves the right to update technical parameters and relevant information without prior notice

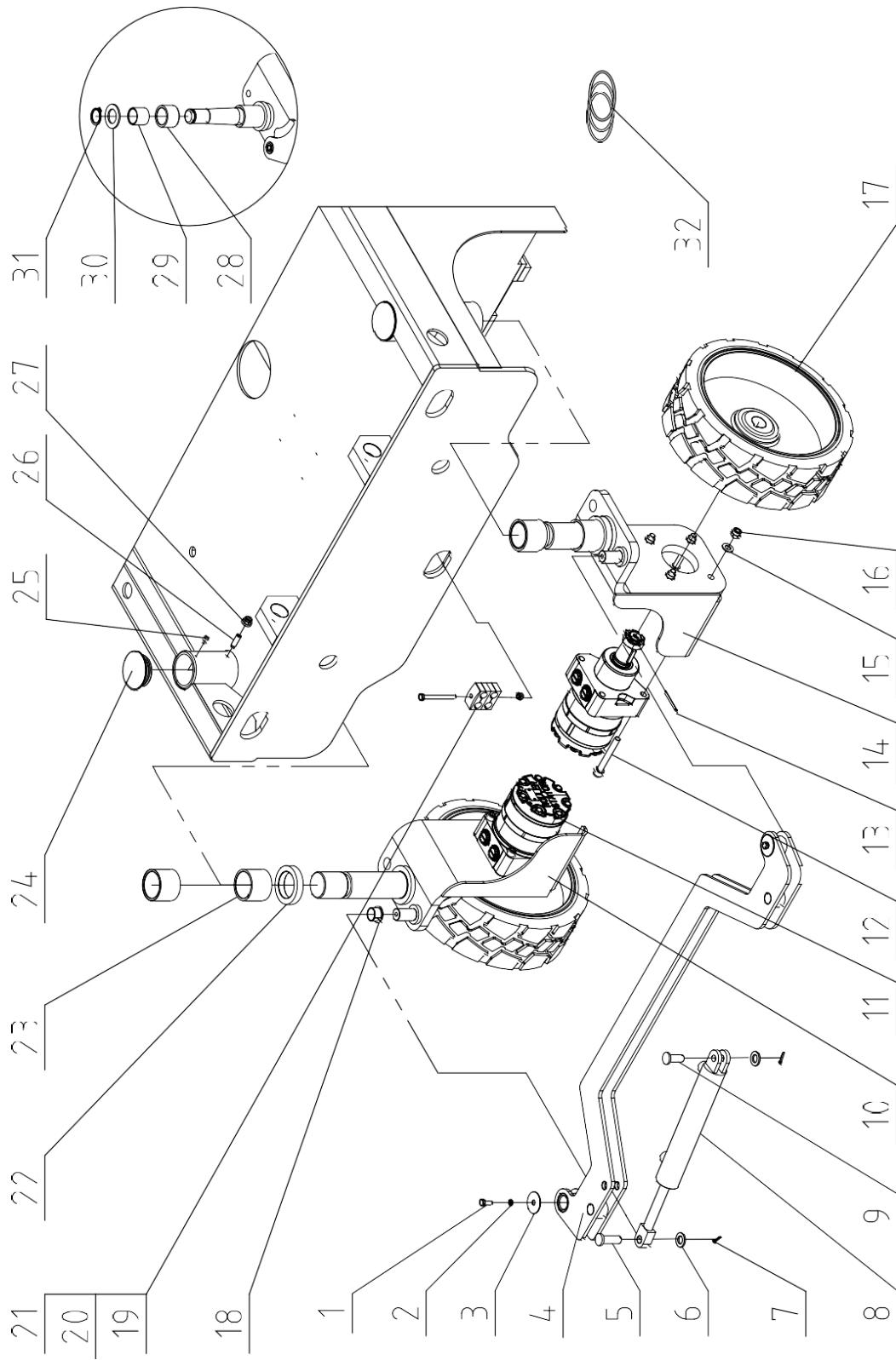
Contents

1	Chassis.....	1
	1.1 Drive steering assembly	1
	1.2 Anti-overturning assembly.....	4
	1.3 Battery door assembly	7
	1.4 Tank door assembly.....	9
	1.5 Tire and pedal assembly.....	13
	1.6 Switches and alarm light assembly	15
	1.7 Oil tank.....	17
2	Scissors.....	19
	2.1 Scissors assembly (65XEN)	19
	2.2 Scissors assembly (78XEN)	23
	2.3 Scissors assembly (80XEN/80XENS)	26
	2.4 Scissors assembly (100XEN/100XENS)	29
	2.5 Scissors assembly (120XEN)	32
	2.6 Scissors assembly (140XEN/160XEN/160XENS)	35
3	Platform	38
	3.1 Fixed platform assembly (65/78XEN, 80/100XENS)	38
	3.2 Extended platform assembly (65/78XEN, 80/100XENS)	40
	3.3 Fixed platform assembly (80/100/120/140/160XEN,160XENS)	42
	3.4 Extended platform assembly (80/100/120/140/160XEN,160XENS)	44
	3.5 Pedal assembly.....	46
4	Hydraulic system	48
	4.1 Hydraulic pipeline (65/78XEN)	48
	4.2 Hydraulic pipeline (80/100XEN,80/100XENS)	50
	4.3 Hydraulic pipeline (120/140XEN,160XEN,160XENS)	52
	4.4 Lifting cylinder assembly.....	55
	4.5 Upper lifting cylinder assembly (120/140XEN, 160XEN, 160XENS)	57
	4.6 Valve bank.....	58
5	Electric System	60
	5.1 Electric harness (65/78XEN,80/100XENS)	60
	5.2 Electric harness (80/100/120/140/160XEN, 160XENS)	63
	5.3 control handle.....	66
	5.4 Control panel assembly.....	67
6	Label.....	68
	6.1 Label diagram.....	68
	6.2 Label figure.....	错误!未定义书签。

1

Chassis

1.1 Drive steering assembly

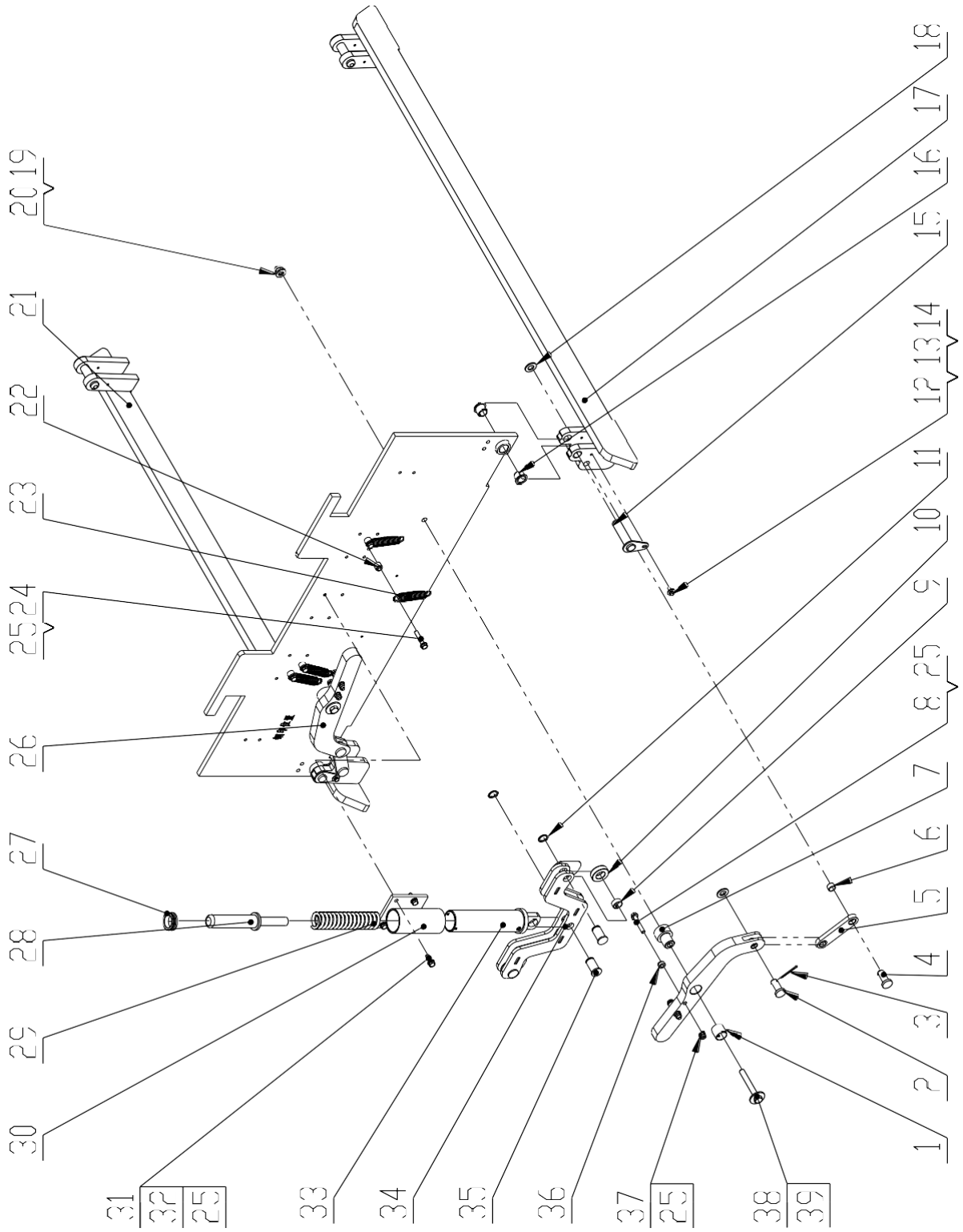


1.1 Drive steering assembly

Item	Part No.	Description	Qty	Serial
1	GB/T 5783 M10×20	Bolt M10×20	2	
2	GB/T 93 10	Spring washer 10	2	
3	140XEN-450003-001	Gasket	2	
4	78XEN-450300-000	Steering linkage	1	65/78XEN, 80/100XENS
	140XEN-450300-001	Steering linkage	1	80/100/120/140XEN
	160XEN-450300-001	Steering linkage	1	160XEN
	160XENS-450300-001	Steering linkage	1	160XENS
5	78XEN-010005-000	Pin	1	
6	GB/T 97 16	Plain washer 16	2	
7	GB/T 91 3.2×40	Split Pin3.2×40	2	
8	78XEN-620200-000	Steering cylinder	1	65/78XEN, 80/100XENS
	140XEN-620300-001	Steering cylinder	1	80/100/120/140/160XEN, 160XENS
9	78XEN-010006-000	Pin	1	
10	78XEN-450200-000	Steering bracket	1	65/78XEN
	80XENS-450200-000	Steering bracket	1	80/100XENS
	140XEN-450200-001	Steering bracket	1	80/100/120/140/160XEN, 160XENS
11	78XEN-130100-G00	Hydraulic motor	2	65/78XEN
	80XENS-130100-G00	Hydraulic motor	2	80/100XENS
	140XEN-130100-G00	Hydraulic motor	2	80/100/120/140/160XEN, 160XENS
12	GB/T 5782 M12×100	Bolt M12×100	8	65/78XEN
	GB/T 5782 M12×90	Bolt M12×90	8	80/100/120/140/160XEN, 80/100/160XENS
13	GB/T 91 4×50	Split Pin 4×50	2	
14	78XEN-450100-000	Steering bracket	1	65/78XEN
	80XENS-450100-000	Steering bracket	1	80/100XENS
	140XEN-450100-001	Steering bracket	1	80/100/120/140/160XEN, 160XENS
15	GB/T 97 12	Plain washer 12	8	
16	GB/T 889 M12	Hexagon nutM12	8	
17	78XEN-810100-G00	Tire	2	65/78XEN
	140XEN-810100-G00	Tire	2	80/100/160XENS,80/100/120/140/160XEN
18	CT-220115-G00	Flanging bushing	2	65/78XEN, 80/100XENS
	CT-225165-G00	Flanging bushing	2	80/100/120/140/160XEN, 160XENS
19	GTHZ170-020116-G00	Pipe clamp	2	
20	GB/T 5783 M8×80	Bolt M8×80	1	
21	GB/T 6183 M8	Hexagon nutM8	1	
22	78XEN-450002-001	Copper bush	2	65/78XEN, 80/100XENS
	140XEN-450002-001	Copper bush	2	80/100/120/140/160XEN, 160XENS

23	CT-523550-G00	Fibre bushing	2	65/78XEN, 80/100XENS
	CT-525550-G00	Fibre bushing	4	80/100/120/140/160XEN, 160XENS
24	140XEN-400006-000	Stifle	2	80/100/120/140/160XEN, 160XENS
25	GB/T 70.1 M5×12	Screw M5×12	2	80/100/120/140/160XEN, 160XENS
26	GB/T 79 M10×35	Screw M10×35	2	80/100/120/140/160XEN, 160XENS
27	GB/T 6183 M10	Hexagon nutM10	2	80/100/120/140/160XEN, 160XENS
28	78XEN-450005-001	Shaft sleeve	2	65/78XEN, 80/100XENS
29	CT-503030-G00	Fibre bushing	2	65/78XEN, 80/100XENS
30	78XEN-300001-000	Thick gasket	2	65/78XEN, 80/100XENS
31	JB/ZQ 4342 30	Clamp spring 30	2	65/78XEN, 80/100XENS
32	78XEN-620002-000	Cylinder seal package	1	65/78XEN, 80/100XENS
	140XEN-620003-000	Cylinder seal package	1	80/100/120/140/160XEN, 160XENS

1.2 Anti-overturning assembly

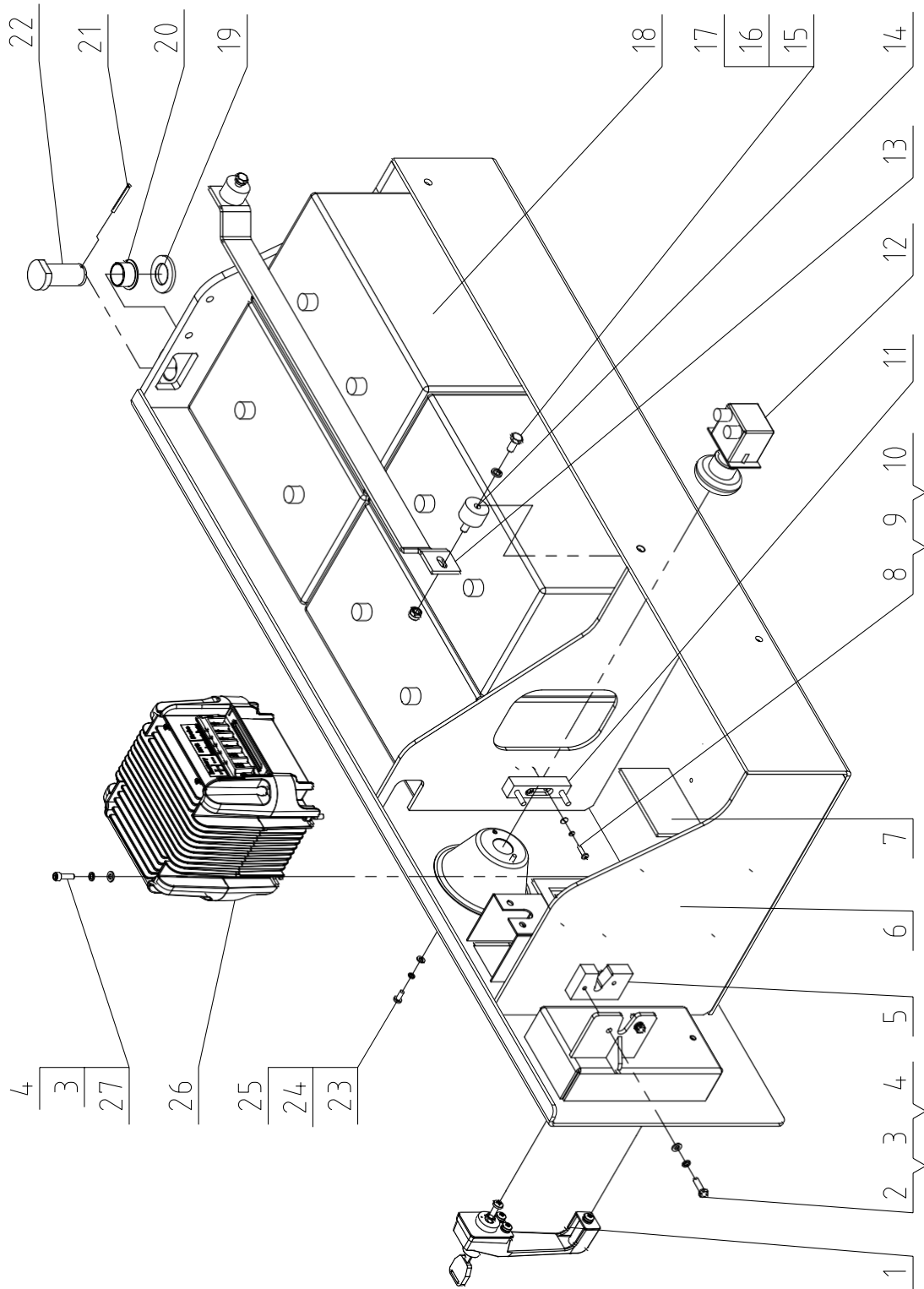


1.2 Anti-overturning assembly

Item	Part No.	Description	Qty	Serial
1	CT-102525-G00	Bushing	2	
2	78XEN-010009-000	Pin	2	
3	GB/T 91 3.2×40	Split Pin 3.2×40	4	
4	78XEN-010009-000	Pin	2	80/100/120/140/160XEN,160XENS
	78XEN-010010-000	Pin	2	65/78XEN, 80/100XENS
5	78XEN-510400-000	Junction plate	2	
6	CT-111510-G00	Bushing	4	
7	78XEN-010008-000	Pin	2	
8	GB/T 5783 M8×50	Bolt M8×50	4	65/78XEN, 80/100XENS
	GB/T 5783 M8×50	Bolt M8×50	8	80/100/120/140/160XEN,160XENS
9	CT-102010-G00	Bushing	3	
10	78XEN-500001-000	Roller	2	
11	G0894P1-000020-00	Clamp spring 20	3	
12	GB/T 5783 M6×16	Bolt M6×16	4	
13	GB/T 93 6	Spring washer 6	4	
14	GB/T 97 6	Plain washer 6	4	
15	78XEN-010200-000	Pin	4	
16	CT-220165-G00	Flanging bushing	4	
17	78XEN-510500-001	Anti-overturning plate A	1	65/78XEN
	140XEN-510500-001	Anti-overturning plate A	1	80/100XENS,80/100/120/140XEN
	160XEN-510500-001	Anti-overturning plate A	1	160XEN,160XENS
18	GB/7 97 16	Plain washer 16	4	
19	GB/T 889 M12	Hexagon nut M12	2	
20	GB/T 97 12	Plain washer 12	2	
21	78XEN-510600-001	Anti-overturning plate B	1	65/78XEN
	140XEN-510600-001	Anti-overturning plate B	1	80/100XENS,80/100/120/140XEN
	160XEN-510600-001	Anti-overturning plate B	1	160XEN,160XENS
22	78XEN-500003-000	Washer	2	65/78XEN, 80/100XENS
	78XEN-500003-000	Washer	4	80/100/120/140/160XEN,160XENS
23	78XEN-030101-000	Spring	2	65/78XEN, 80/100XENS
	78XEN-030101-000	Spring	4	80/100/120/140/160XEN,160XENS
24	GB/T 5783 M8×50	Bolt M8×50	4	65/78XEN, 80/100XENS
	GB/T 5783 M8×50	Bolt M8×50	8	80/100/120/140/160XEN,160XENS
25	GB/T 97 8	Plain washer 8	12	65/78XEN, 80/100XENS
	GB/T 97 8	Plain washer 8	20	80/100/120/140/160XEN,160XENS
26	78XEN-510200-001	Curved plate	2	65/78XEN, 80/100XENS

	140XEN-510200-000	Curved plate	2	80/100/120/140/160XEN,160XENS
27	140XEN-500001-000	Dust cover	1	
28	78XEN-510700-000	Vertical shaft	1	65/78XEN, 80/100XENS
	140XEN-510700-000	Vertical shaft	1	80/100/120/140/160XEN
29	140XEN-030202-000	Spring	1	
30	140XEN-510300-000	Fixed sleeve	1	
31	GB/T 93 8	Spring washer 8	4	
32	GB/T 5783 M8×25	Bolt M8×25	4	
33	GB/T 879 5×16	Spring pin 5×16	2	
34	78XEN-510100-001	Oscillating rod	1	65/78XEN, 80/100XENS
	140XEN-510100-001	Oscillating rod	1	80/100/120/140XEN
	160XEN-510100-002	Oscillating rod	1	160XEN
	160XENS-510100-000	Oscillating rod	1	160XENS
35	78XEN-010007-000	Roller	3	
36	78XEN-500002-000	Washer	2	65/78XEN, 80/100XENS
	78XEN-500002-000	Washer	4	80/100/120/140/160XEN,160XENS
37	GB/T 889 M8	Hexagon nut M8	4	
38	GB/T 5782 M12×90	Bolt M12×90	2	
39	GB/T 96 12	Plain washer 12	2	

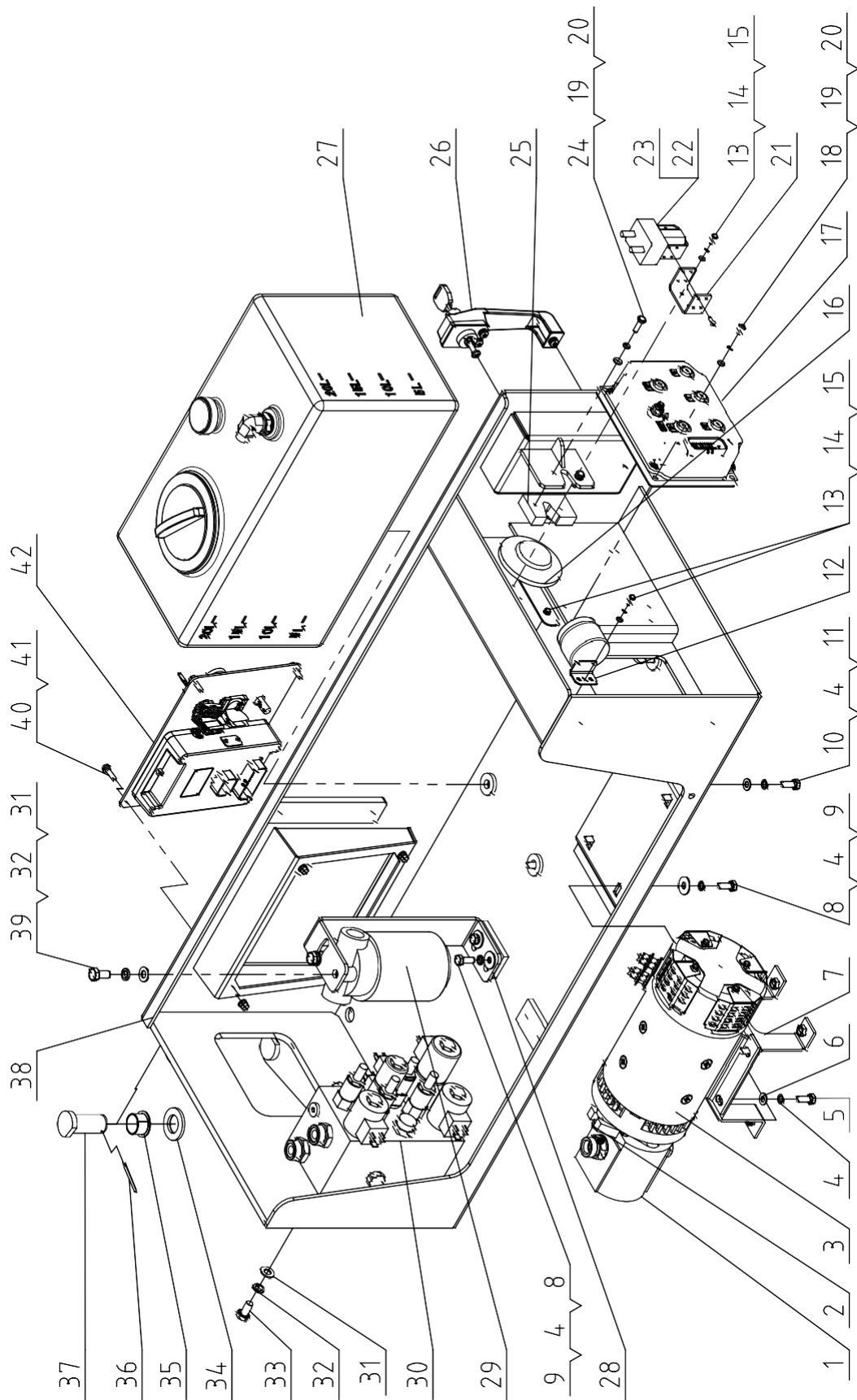
1.3 Battery door assembly



1.3 Battery door assembly

Item	Part No.	Description	Qty	Serial
1	140XEN-401400-G00	Handle	1	
2	GB/T 5783 M6×20	Bolt M6×20	2	
3	GB/T 93 6	Spring washer6	6	
4	GB/T 97 6	Plain washer 6	6	
5	140XEN-401100-G00	Lock body	1	
6	78XEN-420100-003	Battery door	1	65/78XEN
	80XENS-420100-003	Battery door	1	80/100XENS
	140XEN-420100-004	Battery door	1	80/100/120/140/160XEN,160XENS
7	140XEN-420002-000	Organic glass	1	80/100/120/140/160XEN,160XENS
8	GB/T 818 M4×12	Screw M4×12	2	
9	GB/T 93 4	Spring washer4	2	
10	GB/T 97 4	Plain washer 4	2	
11	78XEN-740400-G00	200A Fuse group	1	
12	AMDSZ125-700001-000	Power switch	1	
13	140XEN-420001-000	Clapboard	1	80/100/120/140/160XEN,160XENS
14	140XEN-830001-000	Rubber	2	80/100/120/140/160XEN,160XENS
15	GB/T 5783 M8×12	Screw M8×12	2	80/100/120/140/160XEN,160XENS
16	GB/T 93 8	Spring washer 8	2	80/100/120/140/160XEN,160XENS
17	GB/T 6183 M8	Hexagon nut M8	2	80/100/120/140/160XEN,160XENS
18	78XEN-760100-G02	Battery(6V)	4	65/78XEN, 80/100XENS
	140XEN-760100-G02	Battery(12V)	4	80/100/120/140/160XEN,160XENS
19	GB/T 97 24	Plain washer 24	2	
20	CT-225165-G00	Flanging bushing	2	
21	GB/T 91 4×50	Pin 4×50	2	
22	78XEN-010004-000	Pin	2	
23	GB/T 818 M5×12	Screw M5×12	2	
24	GB/T 93 5	Spring washer 5	2	
25	GB/T 97 5	Plain washer 5	2	
26	78XEN-760200-G03	Charger	1	80/100/120/140/160XEN,80/100/160XENS
27	GB/T 70.3 M6×20	Screw M6×20	4	80/100/120/140/160XEN,80/100/160XENS

1.4 Tank door assembly

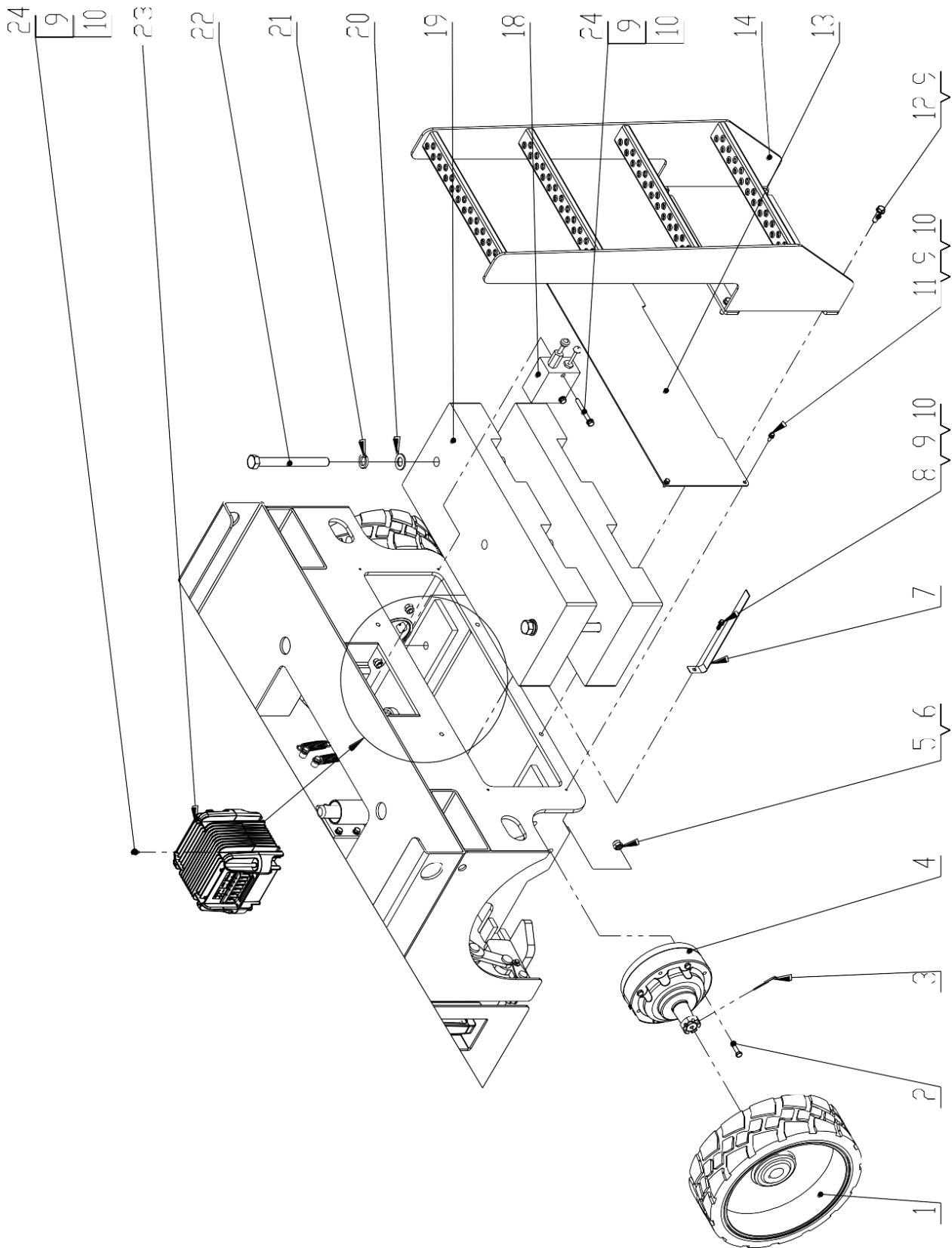


1.4 Tank door assembly

Item	Part No.	Description	Qty	Serial
1	78XEN-660200-G00	Oil pump	1	
2	78XEN-020001-G00	Bolt	2	
3	HS1412AI-110100-G01	Motor	1	
4	GB/T 93 8	Spring washer 8	14	
5	ANSI B18.2.1 1/4-20×3/4	Bolt 1/4-20×3/4	4	
6	ANSI B18.21.1 1/4	Plain washer 1/4	4	
7	140XEN-430200-001	Install panel	1	
8	GB/T 5783 M8×25	Bolt M8×25	6	
9	GB/T 96 8	Plain washer 8	6	
10	GB/T 5783 M8×35	Bolt M8×35	2	65/78XEN
	GB/T 5783 M8×20	Bolt M8×20	4	80/100/120/140/160XEN,80/100/160XENS
11	GB/T 97 8	Plain washer 8	4	
12	78XEN-740800-G00	Buzzer	1	
13	GB/T 5783 M4×12	Bolt M4×12	2	
14	GB/T 93 4	Spring washer4	2	
15	GB/T 96 4	Plain washer4	2	
16	R450-700200-000	Horn	1	
17	HS1614AI-740100-G00	Controller	1	
18	GB/T 818 M6×16	Bolt M6×16	4	
19	GB/T 93 6	Spring washer6	6	
20	GB/T 97 6	Plain washer6	6	
21	HS1412AI-430201-000	Bracket	1	
22	60XEND-741501-G00	Contacto	1	
23	GB/T 70.1 M6×10	Screw M6×10		
24	GB/T 5783 M6×20	Bolt M6×20	2	
25	140XEN-401200-G00	Lock body	1	
26	140XEN-401400-G00	Handle	1	
27	78XEN-610100-001	Tank	1	65/78XEN
	140XEN-610100-001	Tank	1	80/100/120/140/160XEN,80/100/160XENS
28	140XEN-430001-000	Bracket	1	
29	78XEN-610001-G00	Filter	1	
30	140XEN-640100-G20	Valve bank	1	65/78/80/100/120/140XEN, 80/100XENS
31	GB/T 97 10	Plain washer10	4	
32	GB/T 93 10	Spring washer10	4	
33	GB/T 5783 M10×25	Bolt M10×25	2	

34	GB/T 97 24	Plain washer 24	2	
35	CT-225165-G00	Flanging bushing	2	
36	GB/T 91 4×50	Split pin 4×50	2	
37	78XEN-010004-000	Pin	2	
38	78XEN-430100-003	Tank door	1	65/78XEN
	140XEN-431000-004	Tank door	1	80/100/120/140/160XEN,80/100/160XENS
39	GB/T 5783 M10×20	Bolt M10×20	2	
40	GB/T 5789 M6×20	Bolt M6×20	4	
41	GB/T 6183 M6	Hexagon nut M6	4	
42	Refer to legend 5.4	Control panel	1	

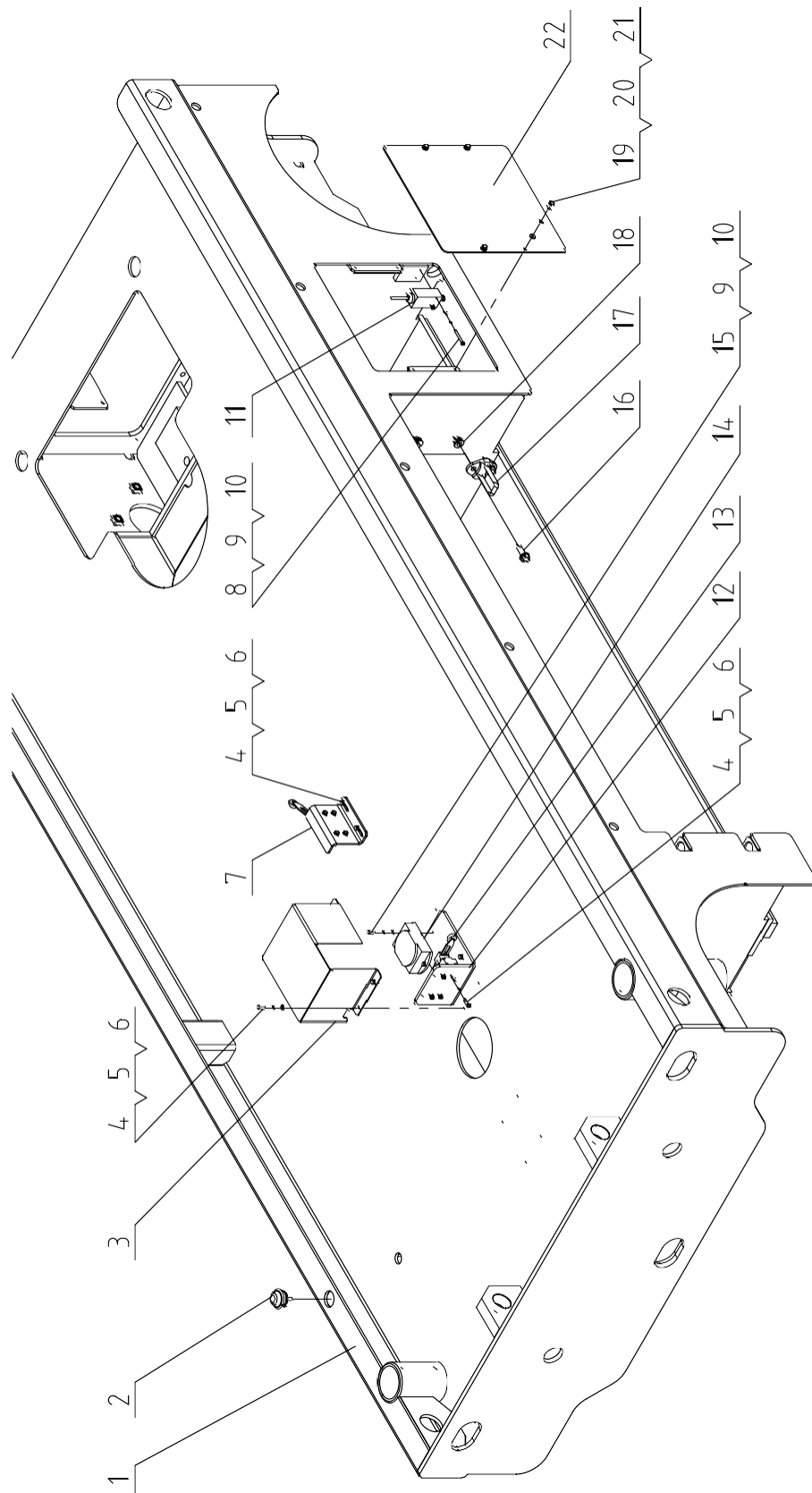
1.5 Tire and pedal assembly



1.5 Tire and pedal assembly

Item	Part No.	Description	Qty	Serial
1	78XEN-810100-G00	Tire	2	65/78XEN
	140XEN-810100-G00	Tire	2	80/100/160XENS,80/100/120/140/ 160XEN
2	GB/T 5782 M12×90	Bolt M12×90	8	
3	GB/T 91 4×50	Split pin 4×50	2	
4	78XEN-120100-G00	Hydraulic brake	2	
5	GB/T 97 12	Plain washer 12	8	
6	GB/T 889 M12	Hexagon nut M12	8	
7	JE255-000001	Electrostatic belt	1	
8	GB/T 5783 M6×20	Bolt M6×20	1	
9	GB/T 97 6	Plain washer 6	9	
10	GB/T 93 6	Spring washer 6	9	
11	GB/T 5783 M6×16	Bolt M6×16	4	
12	GB/T 5783 M12×30	Bolt M12×30	4	
13	160XENS-400002-000	Cover plate	1	160XENS,80/100/120/140/160XEN
14	78XEN-440000-001	Boarding pedal	1	65/78/80XEN, 80/100XENS
	140XEN-440000-001	Boarding pedal	1	160XENS,100/120/140/160XEN
15	GB/T 5783 M8×70	Bolt M8×70	2	
16	GB/T 97 8	Plain washer 8	4	
17	GB/T 889 M8	Hexagon nut M8	2	
18	78XEN-640300-G00	Brake release valve	1	
19	120XEN-400003-001	Balancing weight	1	120XEN
	120XEN-400003-001	Balancing weight	2	140XEN
20	GB/T 97 20	Plain washer 20	2	120XEN, 140XEN
21	GB/T 93 20	Spring washer 20	2	120XEN, 140XEN
22	GB/T 5782 M20×110	Bolt M20×110	2	120XEN
	GB/T 5782 M20×200	Bolt M20×200	2	140XEN
23	78XEN-760200-G03	Charger	1	65/78XEN, 80/100XENS
24	GB/T 5783 M6×20	Bolt M6×20	4	65/78XEN, 80/100XENS

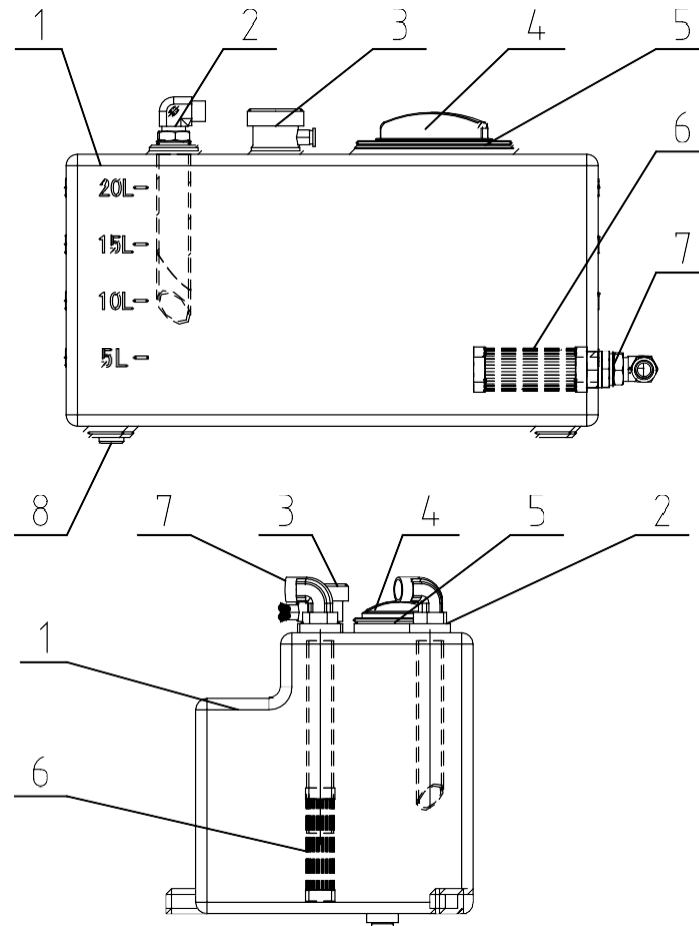
1.6 Switches and alarm light assembly



1.6 Switches and alarm light assembly

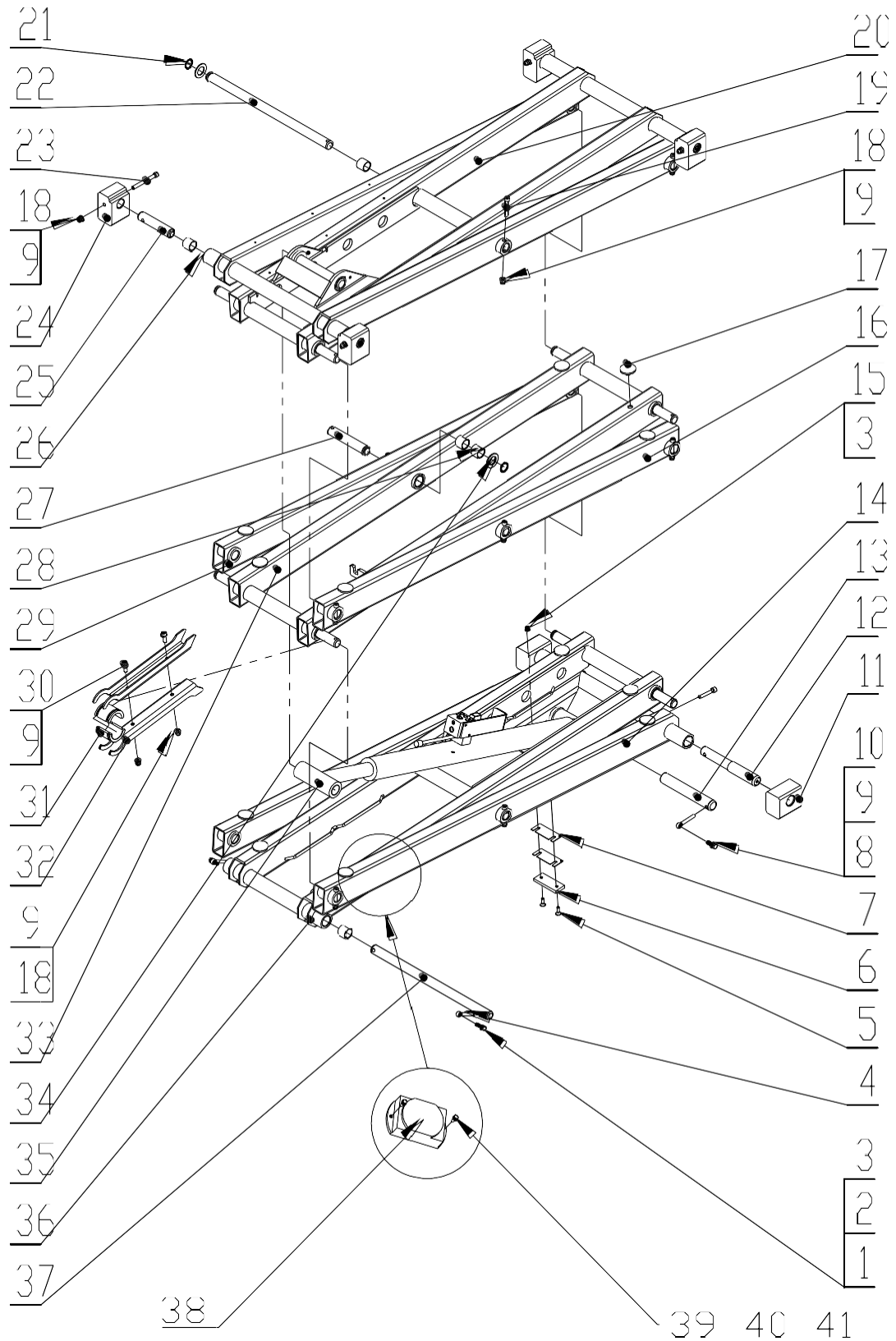
Item	Part No.	Description	Qty	Serial
1	78XEN-410000-002	Frame	1	65/78XEN
	80XENS-410000-001	Frame	1	80/100XENS
	140XEN-410000-003	Frame	1	80/100/120/140XEN
	160XEN-410000-003	Frame	1	160XEN
	160XENS-410000-000	Frame	1	160XENS
2	78XEN-741101-G01	Alarm lamp	1	
3	140XEN-400100-000	Switch cover	1	
4	GB/T 5783 M5×16	Bolt M5×16	16	
5	GB/T 97 5	Plain washer 5	16	
6	GB/T 93 5	Spring washer 5	16	
7	140XEN-740002-000	Bracket B	1	
8	GB/T 5783 M4×35	Bolt M4×35	4	
9	GB/T 93 4	Spring washer 4	6	
10	GB/T 97 4	Plain washer 4	10	
11	78XEN-740600-G00	Limit switch	2	
12	140XEN-740001-000	Bracket A	1	
13	140XEN-740600-G00	Limit switch	2	
14	78XEN-740700-G00	Tilt sensor	1	
15	GB/T 5783 M4×12	Bolt M4×12	2	
16	GB/T 5783 M10×30	Bolt M10×30	4	
17	140XEN-401300-G00	Hook	2	
18	GB/T 889 M10	Hexagon nut M10	4	
19	GB/T 70.2 M6×16	Screw M6×16	8	160XEN,160XENS
20	GB/T 93 6	Spring washer 6	8	160XEN,160XENS
21	GB/T 97 6	Plain washer 6	8	160XEN,160XENS
22	160XENS-400001-000	Cover plate	2	160XEN,160XENS

1.7 Oil tank



Item	Part No.	Description	Qty	Serial
1	78XEN-610101-001	Tank body	1	65/78XEN
	140XEN-610101-001	Tank body	1	160XENS, 80/100/120/140/160XEN
2	78XEN-610102-001	Return pipe assembly	1	
3	140XEN-610108-001	Breathing cover	1	
4	78XEN-610106-001	Tank cap	1	65/78XEN
	140XEN-610106-001	Tank cap	1	160XENS, 80/100/120/140/160XEN
5	78XEN-610107-001	Gasket	1	65/78XEN
	140XEN-610107-001	Gasket	1	160XENS, 80/100/120/140/160XEN
6	78XEN-610104-001	Filter	1	65/78XEN
	140XEN-610104-001	Filter	1	160XENS, 80/100/120/140/160XEN
7	78XEN-610103-001	Suction pipe assembly	1	65/78XEN
	140XEN-610103-001	Suction joint	1	160XENS, 80/100/120/140/160XEN
8	140XEN-610112-001	Plug	1	

2.1 Scissors assembly (65XEN)

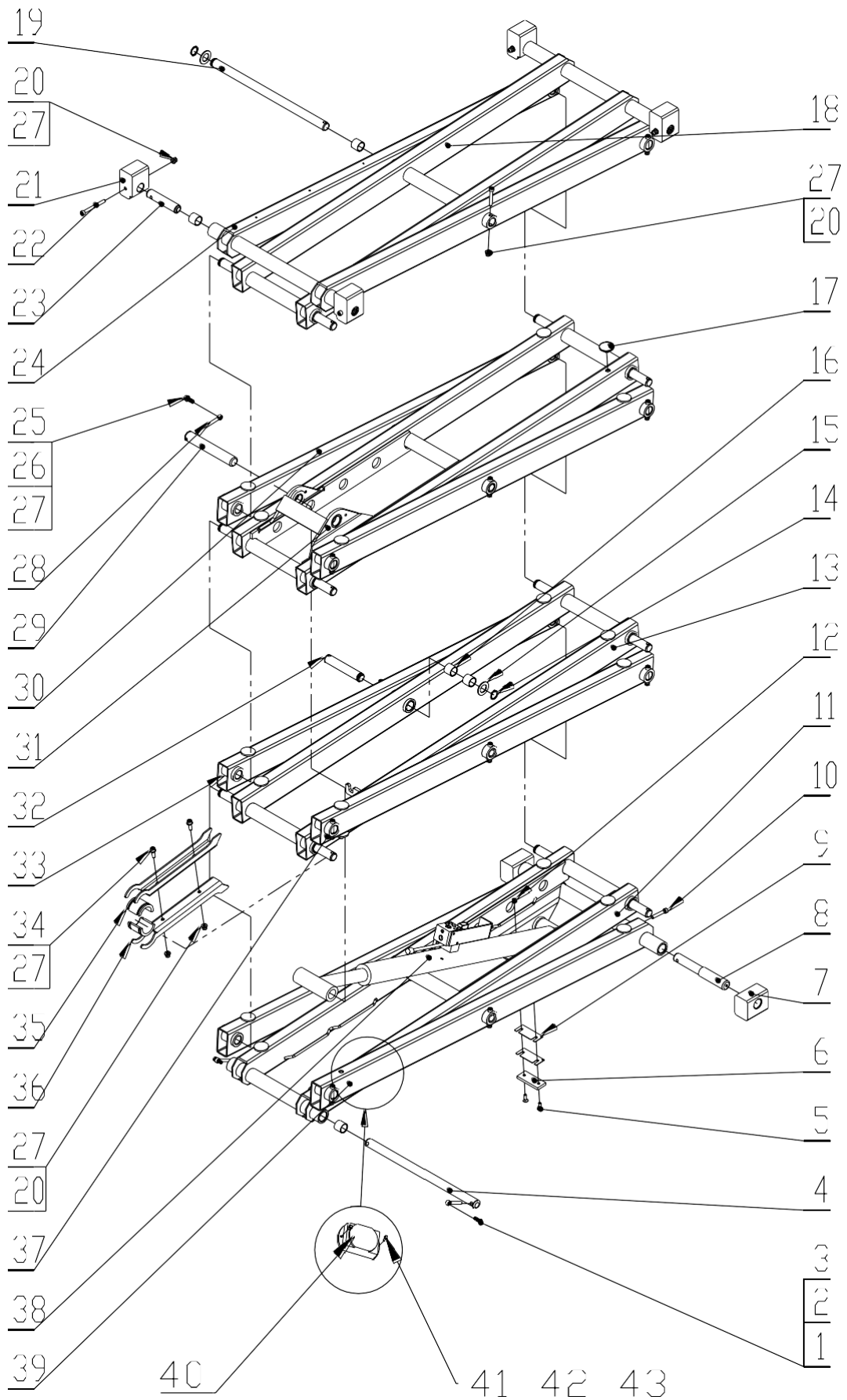


2.1 Scissors assembly (65XEN)

Item	Part No.	Description	Qty
1	GB/T 5783 M8×30	Bolt M8×30	2
2	GB/T 93 8	Spring washer 8	2
3	GB/T 97 8	Plain washer 8	4
4	78XEN-020002-000	Pin	4
5	GB/T 70 M8×40	Screw M8×40	2
6	78XEN-820006-000	Nylon pad	1
7	78XEN-300003-000	Adjusting shim	2
8	GB/T 5783 M10×30	Bolt M10×30	2
9	GB/T 97 10	Plain washer 10	20
10	GB/T 93 10	Spring washer 10	2
11	78XEN-900004-000	Slider	2
12	78XEN-901004-000	Pin	2
13	78XEN-901007-000	Pin	2
14	78XEN-920100-000	Bottom external frame	1
15	GB/T 889 M8	Hexagon nut M8	2
16	78XEN-920300-000	External frame 1	1
17	78XEN-300001-000	Thick gasket	8
18	GB/T 889 M10	Hexagon nut M10	16
19	GB/T 70 M10×60	Screw M10×60	10
20	65XEN-910300-000	Internal frame C	1
21	JB/ZQ 4342 30	Clamp spring 30	8
22	78XEN-901001-000	Pin	6
23	GB/T 70 M10×100	Screw M10×100	4
24	78XEN-900003-000	Slider	4
25	78XEN-901006-000	Pin	4
26	78XEN-920200-000	Top external frame	1
27	78XEN-901002-000	Pin	2
28	CT-503030-G00	Fibre bushing	22
29	78XEN-920500-000	External frame 3	1
30	GB/T 70 M10×30	Screw M10×30	2
31	78XEN-900005-000	Plastic ring	2
32	78XEN-900101-000	Maintenance arm	2
33	78XEN-910200-000	Internal frame B	1
34	78XEN-300001-000	Thick gasket	8
35	Refer to legend 4.4	Lifting cylinder	1
36	78XEN-910100-000	Internal frame A	1

37	78XEN-901003-000	Pin	1
38	78XEN-741200-G00	Angle sensor	1
39	GB/T 5783 M4×12	Bolt M4×12	2
40	GB/T 93 4	Spring washer 4	2
41	GB/T 97 4	Plain washer 4	2

2.2 Scissors assembly (78XEN)

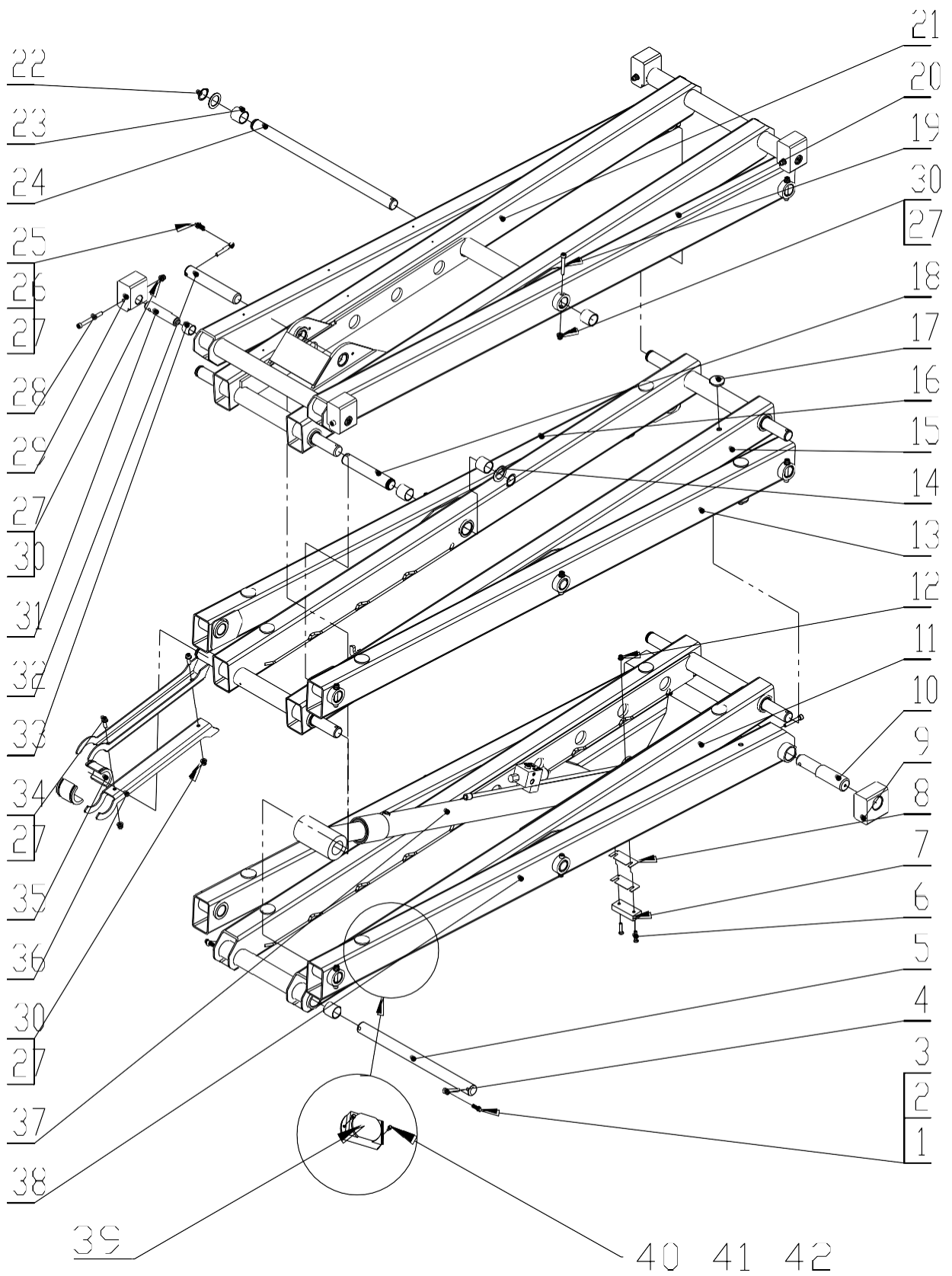


2.2 Scissors assembly (78XEN)

Item	Part No.	Description	Qty
1	GB/T 5783 M8×30	Bolt M8×30	2
2	GB/T 93 8	Spring washer 8	2
3	GB/T 97 10	Plain washer 8	4
4	78XEN-901003-000	Pin	1
5	GB/T 70 M8×40	Screw M8×40	2
6	78XEN-820006-000	Nylon pad	1
7	78XEN-900004-000	Slider	2
8	78XEN-901004-000	Pin	2
9	78XEN-300003-000	Adjusting shim	2
10	GB/T 70 M10×60	Screw M10×60	13
11	78XEN-910100-000	Internal frame A	1
12	GB/T 889 M8	Hexagon nut M8	2
13	78XEN-910200-000	Internal frame B	1
14	JB/ZQ 4342 30	Clamp spring 30	11
15	78XEN-300001-000	Thick gasket	11
16	CT-503030-G00	Fibre bushing	28
17	78XEN-830002-001	Rubber	24
18	78XEN-910400-000	Internal frame D	1
19	78XEN-901001-000	Pin	9
20	GB/T 889 M10	Hexagon nut M10	19
21	78XEN-900003-000	Slider	4
22	GB/T 70 M10×100	Screw M10×100	4
23	78XEN-901006-000	Pin	4
24	78XEN-920200-000	Top external frame	1
25	GB/T 5783 M10×30	Bolt M10×30	2
26	GB/T 93 10	Spring washer 10	2
27	GB/T 97 10	Plain washer 10	23
28	78XEN-020002-000	Pin	4
29	78XEN-901007-000	Pin	2
30	78XEN-920400-000	External frame 2	1
31	78XEN-910300-000	Internal frame C	1
32	78XEN-901002-000	Pin	2
33	78XEN-920500-000	External frame 3	1
34	GB/T 70 M10×30	Screw M10×30	2
35	78XEN-900005-000	Plastic ring	2
36	78XEN-900101-000	Maintenance arm	2

37	78XEN-920300-000	External frame 1	2
38	Refer to legend 4.4	Lifting cylinder	1
39	78XEN-920100-000	Bottom external frame	1
40	78XEN-741200-G00	Angle sensor	1
41	GB/T 5783 M4×12	Bolt M4×12	2
42	GB/T 93 4	Spring washer 4	2
43	GB/T 97 4	Plain washer 4	2

2.3 Scissors assembly (80XEN/80XENS)

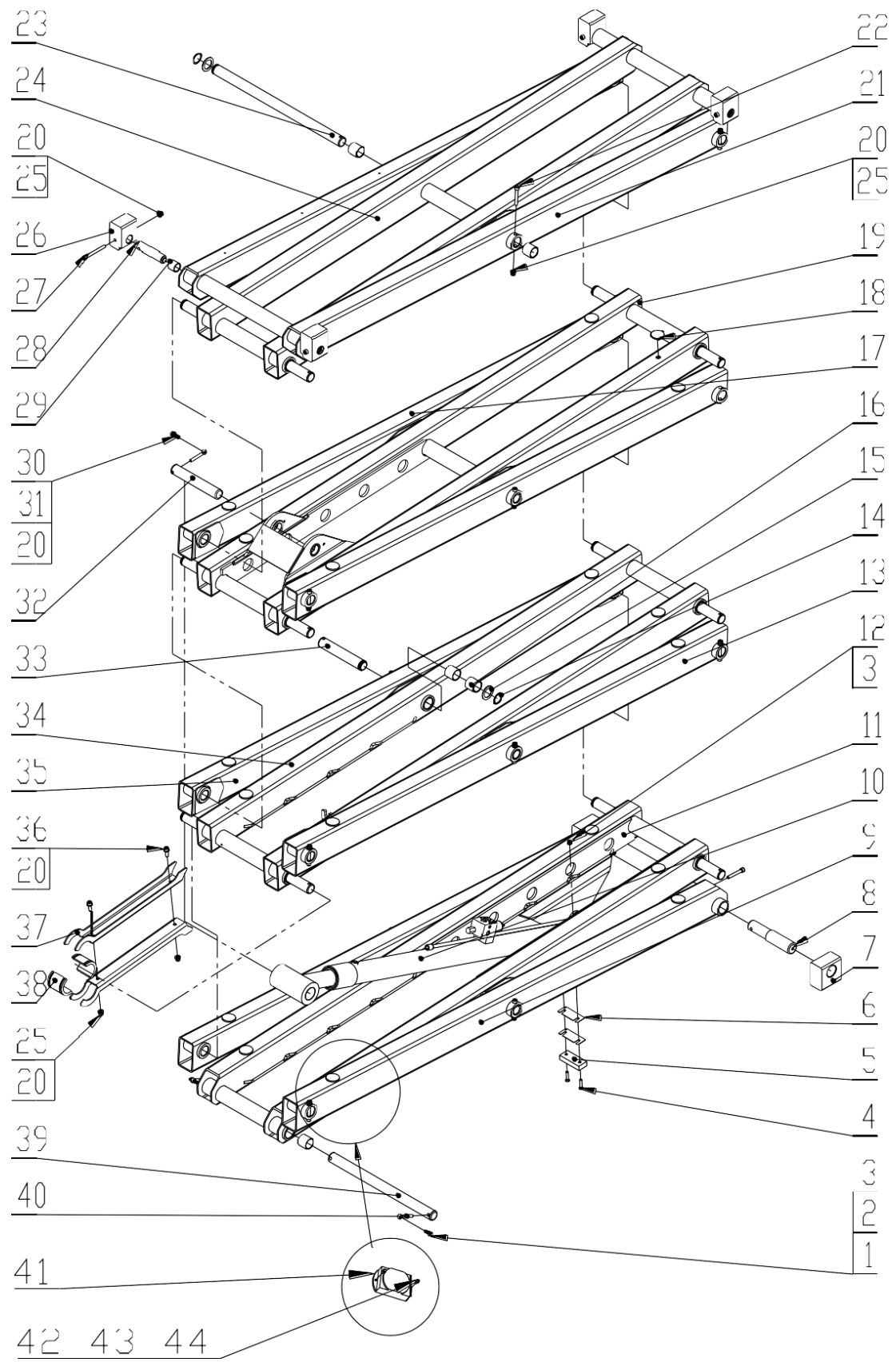


2.3 Scissors assembly (80XEN/80XENS)

Item	Part No.	Description	Qty	Serial
1	GB/T 5783 M8×30	Bolt M8×30	2	
2	GB/T 93 8	Spring washer 8	2	
3	GB/T 97 8	Plain washer 8	4	
4	78XEN-020002-000	Pin	4	
5	140XEN-901003-000	Pin	1	
6	GB/T 70 M8×25	Screw M8×25	2	80XEN
	GB/T 70 M8×40	Screw M8×40	2	80XENS
7	78XEN-820007-000	Nylon pad	1	80XEN
	78XEN-820006-000	Nylon pad	1	80XENS
8	78XEN-300003-000	Adjusting shim	2	
9	140XEN-900004-000	Slider	2	
10	140XEN-901004-000	Pin	2	80XEN
	80XENS-901004-000	Pin	2	80XENS
11	140XEN-910100-000	Internal frame A	1	80XEN
	80XENS-910100-000	Internal frame A	1	80XENS
12	GB/T 889 M8	Hexagon nut M8	2	
13	140XEN-920300-000	External frame 1	1	
14	140XEN-300001-000	Thick gasket	9	
15	140XEN-910200-000	Internal frame B	1	
16	140XEN-920500-000	External frame 3	1	
17	78XEN-830002-001	Rubber	16	
18	140XEN-901002-000	Pin	4	
19	GB/T 70 M10×75	Screw M10×75	11	
20	140XEN-920200-000	Top external frame	1	80XEN
	80XENS-920200-000	Top external frame	1	80XENS
21	120XEN-910500-000	Internal frame E	1	80XEN
	80XENS-910300-000	Internal frame C	1	80XENS
22	JB/ZQ 4342 38	Clamp spring 38	9	
23	CT-513840-G00	Fibre bushing	20	
24	140XEN-901001-000	Pin	5	
25	GB/T 5783 M10×30	Bolt M10×30	2	
26	GB/T 93 10	Spring washer 10	2	
27	GB/T 97 10	Plain washer 10	21	
28	GB/T 70 M10×100	Screw M10×100	4	
29	140XEN-900003-000	Slider	4	80XEN
	78XEN-900003-000	Slider	4	80XENS

30	GB/T 889 M10	Hexagon nut M10	17	
31	140XEN-901006-000	Pin	4	80XEN
	78XEN-901006-000	Pin	4	80XENS
32	140XEN-901007-000	Pin	2	80XEN
	80XENS-901007-000	Pin	2	80XENS
33	CT-513840-G00	Fibre bushing	4	80XEN
	CT-523030-G00	Fibre bushing	4	80XENS
34	GB/T 70 M10×30	Screw M10×30	2	
35	140XEN-900005-000	Plastic ring	2	
36	140XEN-900101-000	Maintenance arm	2	
37	Refer to legend 4.4	Lifting cylinder	1	
38	140XEN-920200-000	Bottom external frame	1	80XEN
	80XENS-920100-000	Bottom external frame	1	80XENS
39	78XEN-741200-G00	Angle sensor	1	
40	GB/T 5783 M4×12	Bolt M4×12	2	
41	GB/T 93 4	Spring washer 4	2	
42	GB/T 97 4	Plain washer 4	2	

2.4 Scissors assembly (100XEN/100XENS)

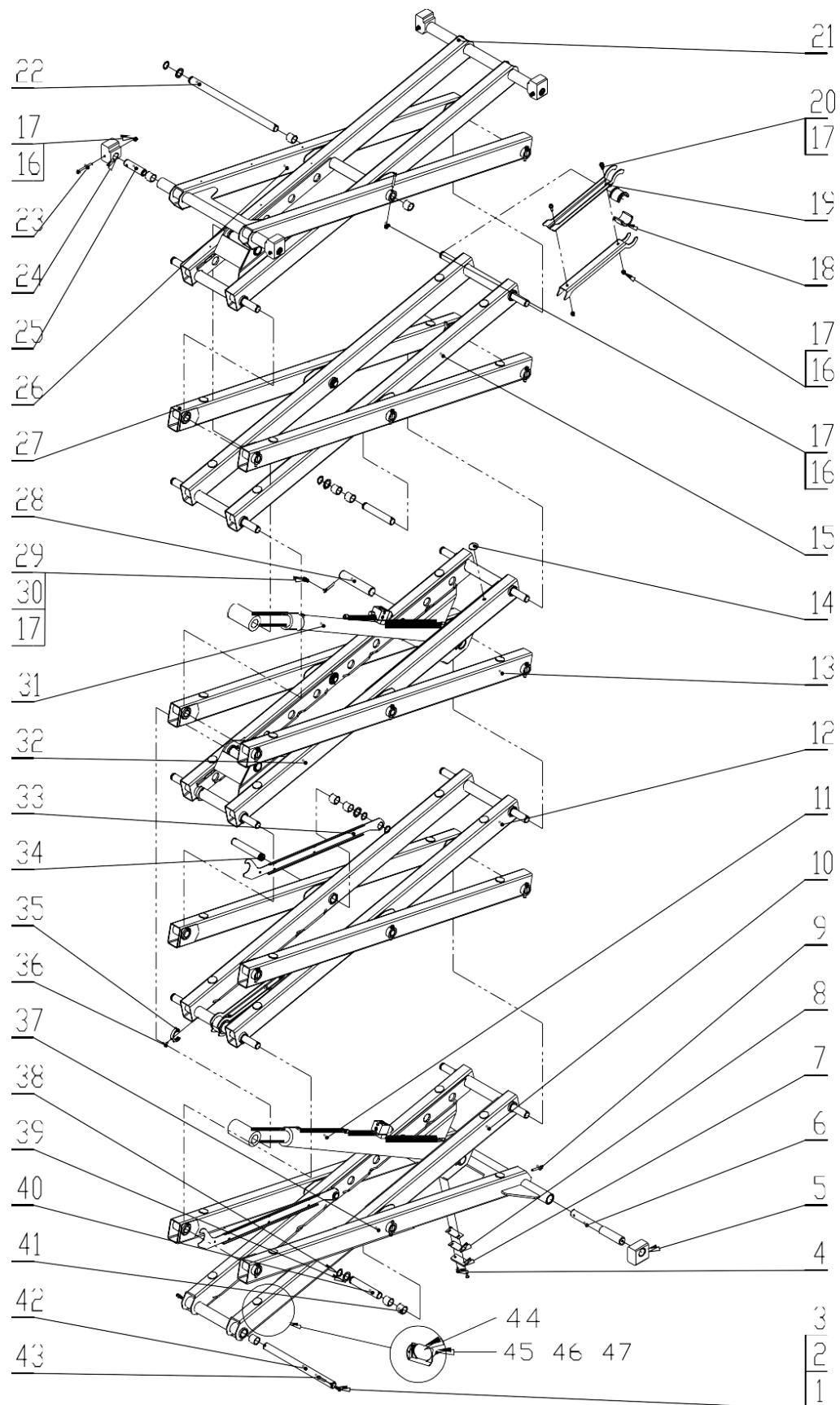


2.4 Scissors assembly (100XEN/100XENS)

Item	Part No.	Description	Qty	Serial
1	GB/T 97 8	Plain washer 8	4	
2	GB/T 93 8	Spring washer 8	2	
3	GB/T 5783 M8×30	Bolt M8×30	2	
4	GB/T 70 M8×25	Screw M8×25	2	100XEN
	GB/T 70 M8×25	Screw M8×40	2	100XENS
5	78XEN-820007-000	Nylon pad	1	
6	78XEN-820006-000	Nylon pad	1	100XEN
	78XEN-300003-000	Adjusting shim	2	100XENS
7	140XEN-900004-000	Slider	2	
8	140XEN-901004-000	Pin	2	100XEN
	80XENS-901004-000	Pin	2	100XENS
9	140XEN-920200-000	Bottom external frame	1	100XEN
	80XENS-920100-000	Bottom external frame	1	100XENS
10	Refer to legend 4-4	Lifting cylinder	1	
11	140XEN-910100-000	Internal frame A	1	100XEN
	80XENS-910100-000	Internal frame A	1	100XENS
12	G000889-000008-00	Hexagon nut M8	2	
13	140XEN-920300-000	External frame 1	2	
14	JB/ZQ 4342 38	Clamp spring 38	12	
15	140XEN-300001-000	Thick gasket	12	
16	CT-513840-G00	Fibre bushing	26	
17	140XEN-920400-000	External frame 2	1	
18	78XEN-830002-001	Rubber	24	
19	140XEN-910500-000	Internal frame E	1	100XEN
	100XENS-910300-000	Internal frame C	1	100XENS
20	GB/T 97 10	Plain washer 10	23	
21	140XEN-920200-000	Top external frame	1	100XEN
	80XENS-920200-000	Top external frame	1	100XENS
22	GB/T 70 M10×75	Screw M10×75	13	
23	140XEN-901001-000	Pin	8	
24	140XEN-910600-000	Internal frame F	1	100XEN
	100XENS-910400-000	Internal frame D	1	100XENS
25	GB/T 889 M10	Hexagon nut M10	19	
26	140XEN-900003-000	Slider	4	100XEN
	78XEN-900003-000	Slider	4	100XENS
27	GB/T 70 M10×100	Screw M10×100	4	

28	140XEN-901006-000	Pin	4	100XEN
	78XEN-901006-000	Pin	4	100XENS
29	CT-513840-G00	Fibre bushing	4	100XEN
	CT-523030-G00	Fibre bushing	4	100XENS
30	GB/T 5783 M10×30	Bolt M10×30	2	
31	GB/T 93 10	Spring washer 10	2	
32	140XEN-901007-000	Pin	2	100XEN
	80XENS-901007-000	Pin	2	100XENS
33	140XEN-901002-000	Pin	4	
34	140XEN-910200-000	Internal frame B	1	
35	140XEN-920500-000	External frame 3	1	
36	GB/T 70 M10×30	Screw M10×30	2	
37	140XEN-900101-000	Maintenance arm	2	
38	140XEN-900005-000	Plastic ring	2	
39	140XEN-901003-000	Pin	1	
40	78XEN-020002-000	Pin	4	
41	78XEN-741200-G00	Angle sensor	1	
42	GB/T 5783 M4×12	Bolt M4×12	2	
43	GB/T 93 4	Spring washer 4	2	
44	GB/T 97 4	Plain washer 4	2	

2.5 Scissors assembly (120XEN)

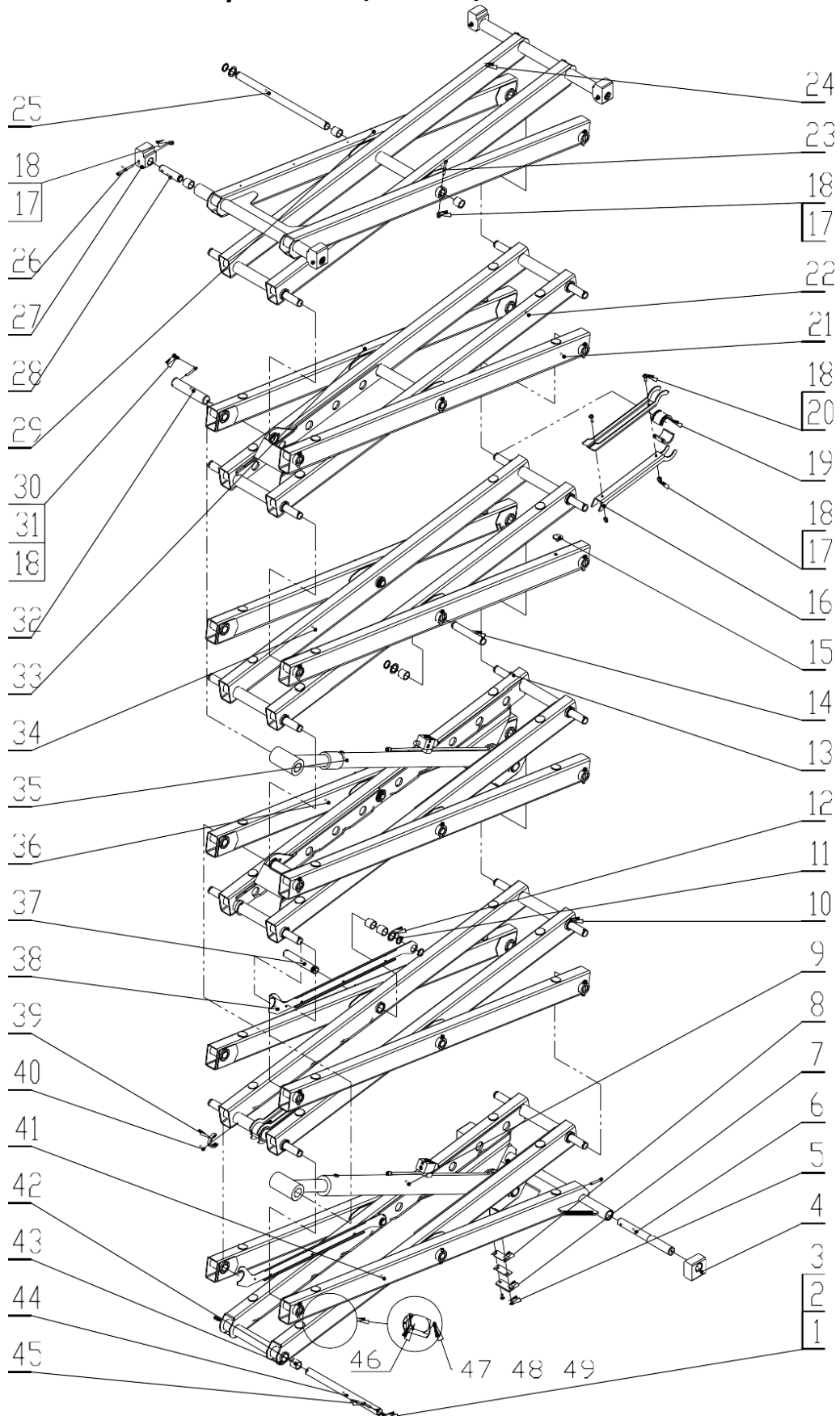


2.5 Scissors assembly (120XEN)

Item	Part No.	Description	Qty
1	GB/T 5783 M8×30	Bolt M8×30	2
2	GB/T 93 8	Spring washer 8	2
3	GB/T 97 8	Plain washer 8	2
4	GB/T 70 M8×25	Screw M8×25	2
5	140XEN-900004-000	Slider	2
6	140XEN-901004-000	Pin	2
7	78XEN-820006-000	Nylon pad	1
8	78XEN-300003-000	Adjusting shim	2
9	GB/T 70 M10×75	Screw M10×75	19
10	140XEN-910100-000	Internal frame A	1
11	Refer to legend 4-4	Lifting cylinder	1
12	140XEN-910200-000	Internal frame B	1
13	140XEN-920300-000	External frame 1	3
14	78XEN-830002-001	Rubber	32
15	140XEN-910400-000	Internal frame D	1
16	GB/T 889 M10	Hexagon nut M10	27
17	GB/T 97 10	Plain washer 10	35
18	140XEN-900005-000	Plastic ring	4
19	140XEN-900101-000	Maintenance arm	4
20	GB/T 70 M10×30	Screw M10×30	4
21	120XEN-910500-000	Internal frame E	1
22	140XEN-901001-000	Pin	9
23	GB/T 70 M10×100	Screw M10×100	4
24	140XEN-900003-000	Slider	4
25	140XEN-901006-000	Pin	4
26	140XEN-920200-000	Top external frame	1
27	140XEN-920500-000	External frame 3	3
28	140XEN-901007-000	Pin	4
29	GB/T 5783 M10×30	Bolt M10×30	4
30	GB/T 93 10	Spring washer 10	4
31	Refer to legend 4.5	Upper lifting cylinder	1
32	140XEN-910300-000	Internal frame C	1
33	140XEN-900201-000	Wiring channel A	2
34	140XEN-901005-000	Pin	2
35	140XEN-900006-000	Stop collar	2
36	GB/T 70 M6×16	Screw M6×16	2

37	140XEN-920100-000	Bottom external frame	1
38	140XEN-901002-000	Pin	6
39	JB/ZQ 4342 38	Clamp spring 38	19
40	140XEN-300001-000	Thick gasket	17
41	CT-513840-G00	Fibre bushing	40
42	140XEN-901003-000	Pin	1
43	78XEN-020002-000	Pin	6
44	78XEN-741200-G00	Angle sensor	1
45	GB/T 5783 M4 × 12	Bolt M4 × 12	2
46	GB/T 93 4	Spring washer 4	2
47	GB/T 97 4	Plain washer 4	2

2.6 Scissors assembly (140XEN/160XEN/160XENS)



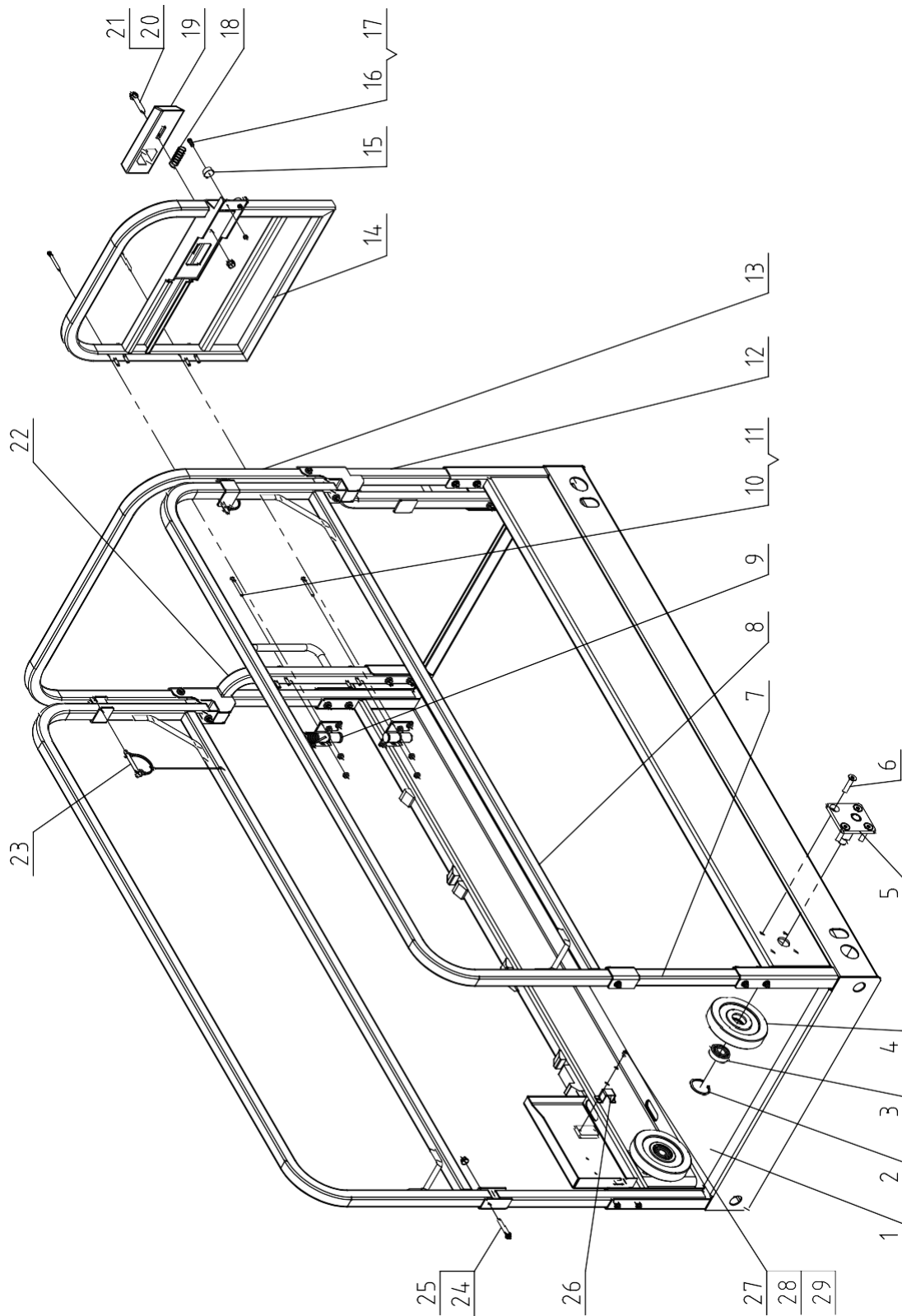
2.6 Scissors assembly (140XEN/160XEN/160XENS)

Item	Part No.	Description	Qty	Serial
1	GB/T 5783 M8×30	Bolt M8×30	2	
2	GB/T 93 8	Spring washer 8	2	
3	GB/T 97 8	Plain washer 8	2	
4	140XEN-900004-000	Slider	2	
5	GB/T 70 M8×25	Screw M8×25	2	
6	140XEN-901004-000	Pin	2	140XEN
	160XEN-901004-000	Pin	2	160XEN
	160XENS-901004-000	Pin	2	160XENS
7	78XEN-820006-000	Nylon pad	1	
8	78XEN-300003-000	Adjusting shim	2	
9	Refer to legend 4-4	Lifting cylinder	1	
10	140XEN-910200-000	Internal frame B	1	140XEN
	160XEN-910200-000	Internal frame B	1	160XEN,160XENS
11	JB/ZQ 4342 38	Clamp spring 38	22	
12	140XEN-300001-000	Thick gasket	20	
13	140XEN-910300-000	Internal frame C	1	140XEN
	160XEN-910300-000	Internal frame C	1	160XEN,160XENS
14	140XEN-901002-000	Pin	6	
15	78XEN-830002-001	Rubber	40	
16	140XEN-900101-000	Maintenance arm	4	
17	GB/T 889 M10	Hexagon nut M10	30	
18	GB/T 97 10	Plain washer 10	38	
19	140XEN-900005-000	Plastic ring	4	
20	GB/T 70 M10×30	Screw M10×30	4	
21	140XEN-920300-000	External frame 1	4	140XEN
	160XEN-920300-000	External frame 1	4	160XEN,160XENS
22	140XEN-910500-000	Internal frame E	1	140XEN
	160XEN-910500-000	Internal frame E	1	160XEN,160XENS
23	GB/T 70 M10×75	Screw M10×75	22	
24	140XEN-910600-000	Internal frame F	1	140XEN
	160XEN-910600-000	Internal frame F	1	160XEN,160XENS
25	140XEN-901001-000	Pin	12	
26	GB/T 70 M10×100	Screw M10×100	4	
27	140XEN-900003-000	Slider	4	
28	140XEN-901006-000	Pin	4	
29	140XEN-920200-000	Top external frame	1	140XEN

	160XEN-920200-000	Top external frame	1	160XEN,160XENS
30	GB/T 5783 M10×30	Bolt M10×30	4	
31	GB/T 93 10	Spring washer 10	4	
32	140XEN-901007-000	Pin	4	
33	140XEN-920400-000	External frame 2	1	140XEN
	160XEN-920400-000	External frame 2	1	160XEN,160XENS
34	140XEN-910400-000	Internal frame D	1	140XEN
	160XEN-910400-000	Internal frame D	1	160XEN,160XENS
35	Refer to legend 4-5	Upper lifting cylinder	1	
36	140XEN-920500-000	External frame 3	3	140XEN
	160XEN-920500-000	External frame 3	3	160XEN,160XENS
37	140XEN-901005-000	Pin	2	
38	140XEN-900201-000	Wiring channel A	2	140XEN
	160XEN-900201-000	Wiring channel A	2	160XEN,160XENS
39	140XEN-900006-000	Stop collar	2	
40	GB/T 70 M6×16	Screw M6×16	2	
41	140XEN-920100-000	Bottom external frame	1	140XEN
	160XEN-920100-000	Bottom external frame	1	160XEN
	160XENS-920100-000	Bottom external frame	1	160XENS
42	CT-513840-G00	Fibre bushing	46	
43	140XEN-910100-000	Internal frame A	1	140XEN
	160XEN-910100-000	Internal frame A	1	160XEN,160XENS
44	140XEN-901003-000	Pin	1	
45	78XEN-020002-000	Pin	6	
46	78XEN-741200-G00	Angle sensor	1	
47	GB/T 5783 M4×12	Bolt M4×12	2	
48	GB/T 93 4	Spring washer 4	2	
49	GB/T 97 4	Plain washer 4	2	

Platform

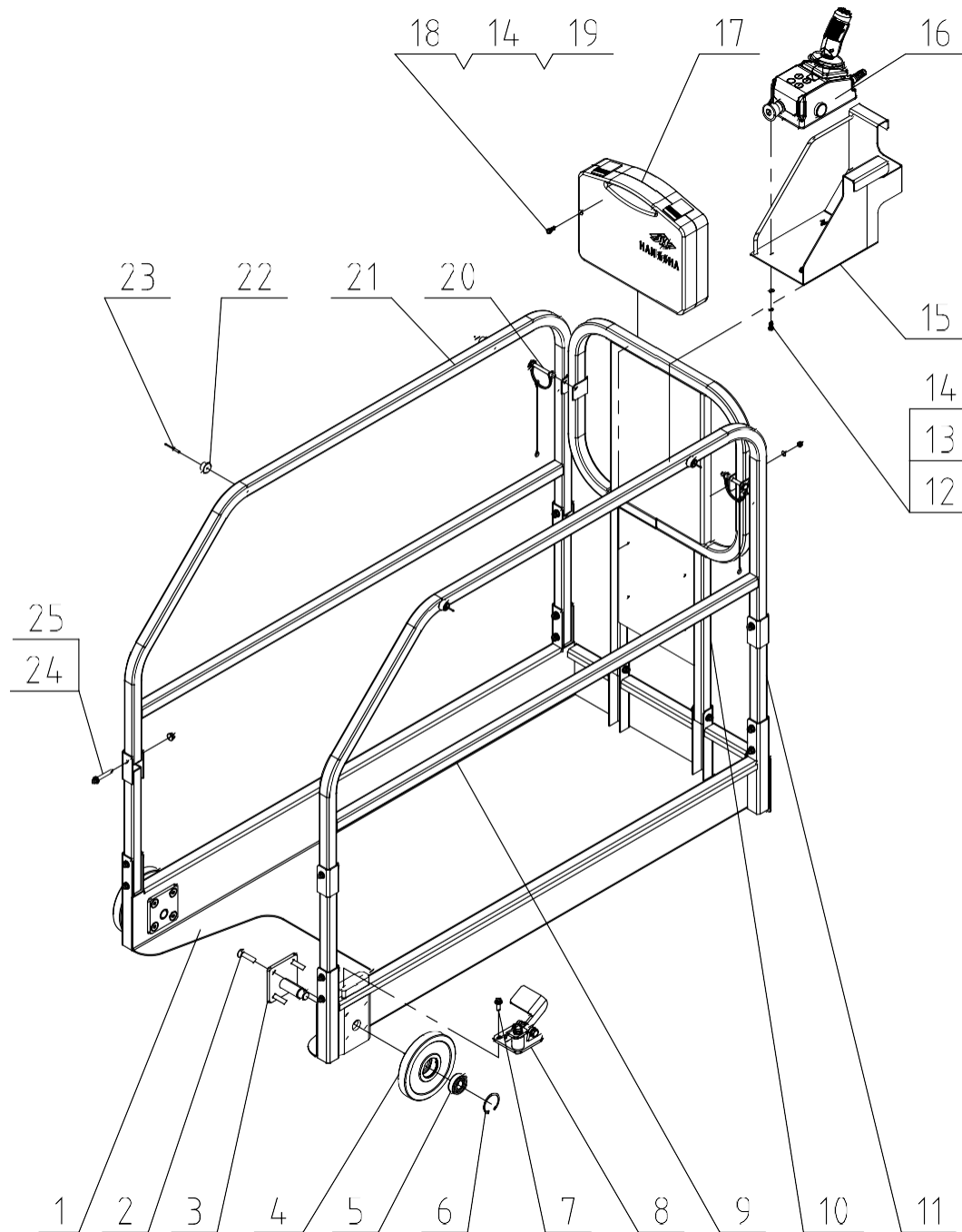
3.1 Fixed platform assembly (65/78XEN, 80/100XENS)



3.1 Fixed platform assembly (65/78XEN, 80/100XENS)

Item	Part No.	Description	Qty	Serial
1	78XEN-810100-000	Fixed platform	1	65/78XEN
	80XENS-810100-000	Fixed platform	1	80/100XENS
2	GB/T 893.1 A-47	Clamp spring 47	2	
3	GB/T 276 6204-Z	Bearing6204-Z	2	
4	60XEND-800002-000	Roller	2	
5	140XEN-800500-000	Roller bracket	2	
6	GB/T 70 M10×45	Screw M10×45	8	
7	78XEN-810300-000	Guardrail support plate	2	
8	78XEN-810200-000	Left guardrail	2	65/78XEN
	80XENS-810200-000	Left guardrail	2	80/100XENS
9	140XEN-800600-000	Spring Hinge	1	
10	GB/T 5789 M6×50	Bolt M6×50	12	
11	GB/T 6183 M6	Hexagon nut M6	12	
12	78XEN-810400-000	Door support plate	1	
13	78XEN-810600-000	Rear guardrail	1	
14	78XEN-810700-000	Entrance door	1	
15	60XEND-800012-000	Rubber pad	2	
16	GB/T 5783 M5×16	Bolt M5×16	2	
17	GB/T889 M5	Hexagon nut M5	2	
18	140XEN-800009-000	Spring	1	
19	140XEN-800001-000	Plastic pin	1	
20	GB/T 5789 M10×55	Bolt M10×55	1	
21	GB/T 6183 M10	Hexagon nut M10	1	
22	78XEN-810500-000	Door support plate	1	
23	140XEN-800800-000	D-latch	2	
24	GB/T 5789 M8×50	Bolt M8×50	18	
25	GB/T 6183 M8	Hexagon nut M8	18	
26	78XEN-200002-000	Fixed plate	1	
27	GB/T 70 M5×12	Screw M5×12	2	
28	GB/T 93 5	Spring washer 5	2	
29	GB/T 97 5	Plain washer 5	2	

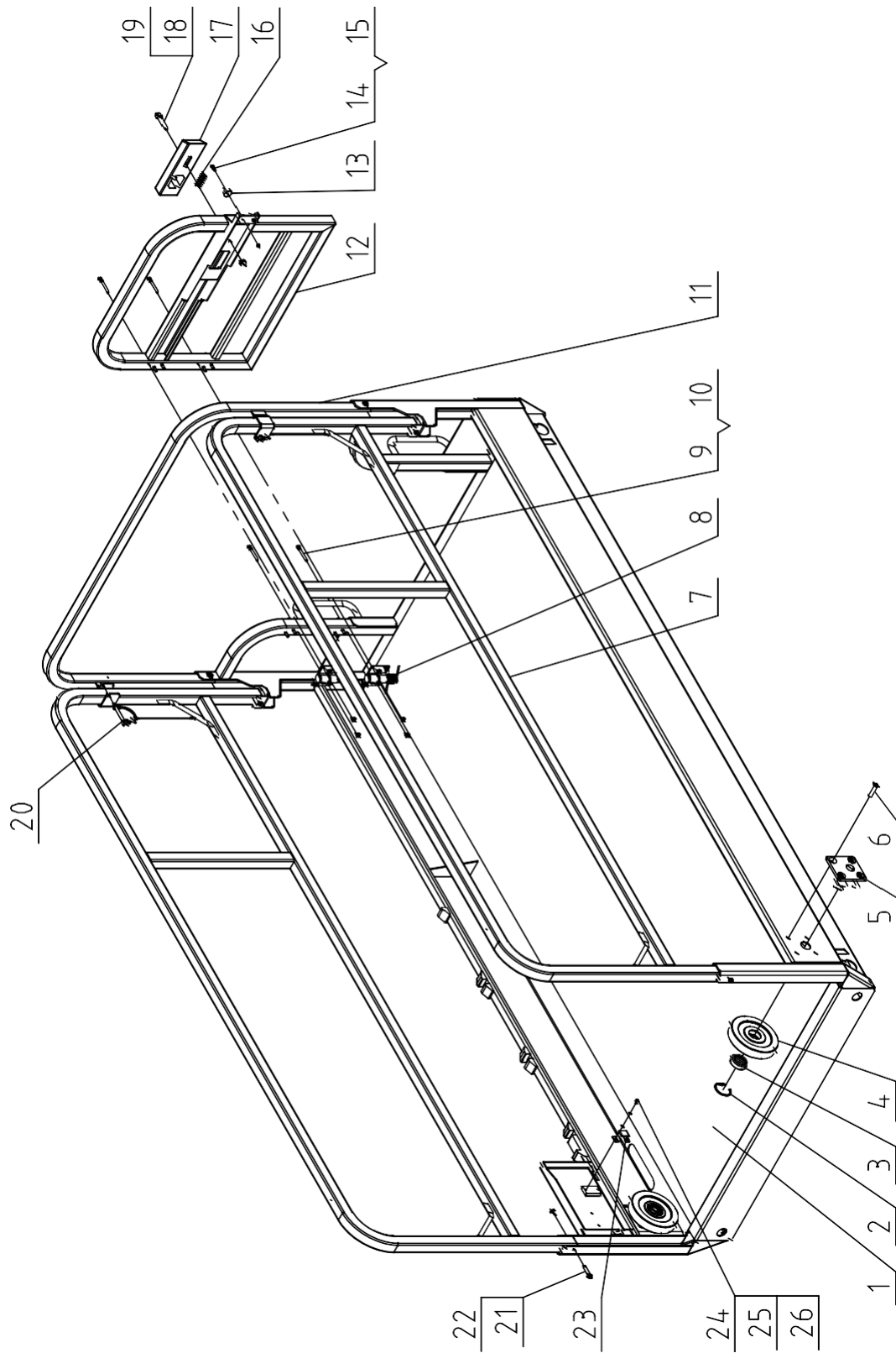
3.2 Extended platform assembly (65/78XEN, 80/100XENS)



3.2 Extended platform assembly (65/78XEN, 80/100XENS)

Item	Part No.	Description	Qty	Serial
1	78XEN-820100-000	Extension platform	1	
2	GB/T70 M10×45	Screw M10×45	8	
3	140XEN-800500-000	Roller bracket	2	
4	60XEND-800001-000	Roller	2	
5	GB/T 5787 M8×20	Bolt M8×20	2	
6	GB/T 276 6204-Z	Bearing6204-Z	2	
7	GB/T 893.1 A-47	Clamp spring 47	2	
8	140XEN-801000-000	Platform pedal	1	Refer to legend 3.5
9	78XEN-820300-000	Right guardrail	1	
10	78XEN-820600-000	Front guardrail	1	
11	78XEN-820400-000	Guardrail support plate	4	
12	GB/T 5783 M6×16	Bolt M6×16	8	
13	GB/T 93 6	Spring washer 6	4	
14	GB/T 97 6	Plain washer 6	12	
15	60XEND-800400-000	Handle bracket	1	
16	78XEN-750000-G00	Control handle	1	
17	78XEN-820100-G00	File box	1	
18	GB/T 5789 M6×16	Bolt M6×16	4	
19	GB/T 923 M6	Hexagon nut M6	4	
20	140XEN-800800-000	D-latch	2	
21	78XEN-820200-000	Left guardrail	1	
22	60XEND-800012-000	Rubber pad	4	
23	GB/T126181 4×16	Rivet 4×16	4	
24	GB/T 5789 M8×50	Bolt M8×50	14	
25	GB/T 6183 M8	Hexagon nut M8	14	

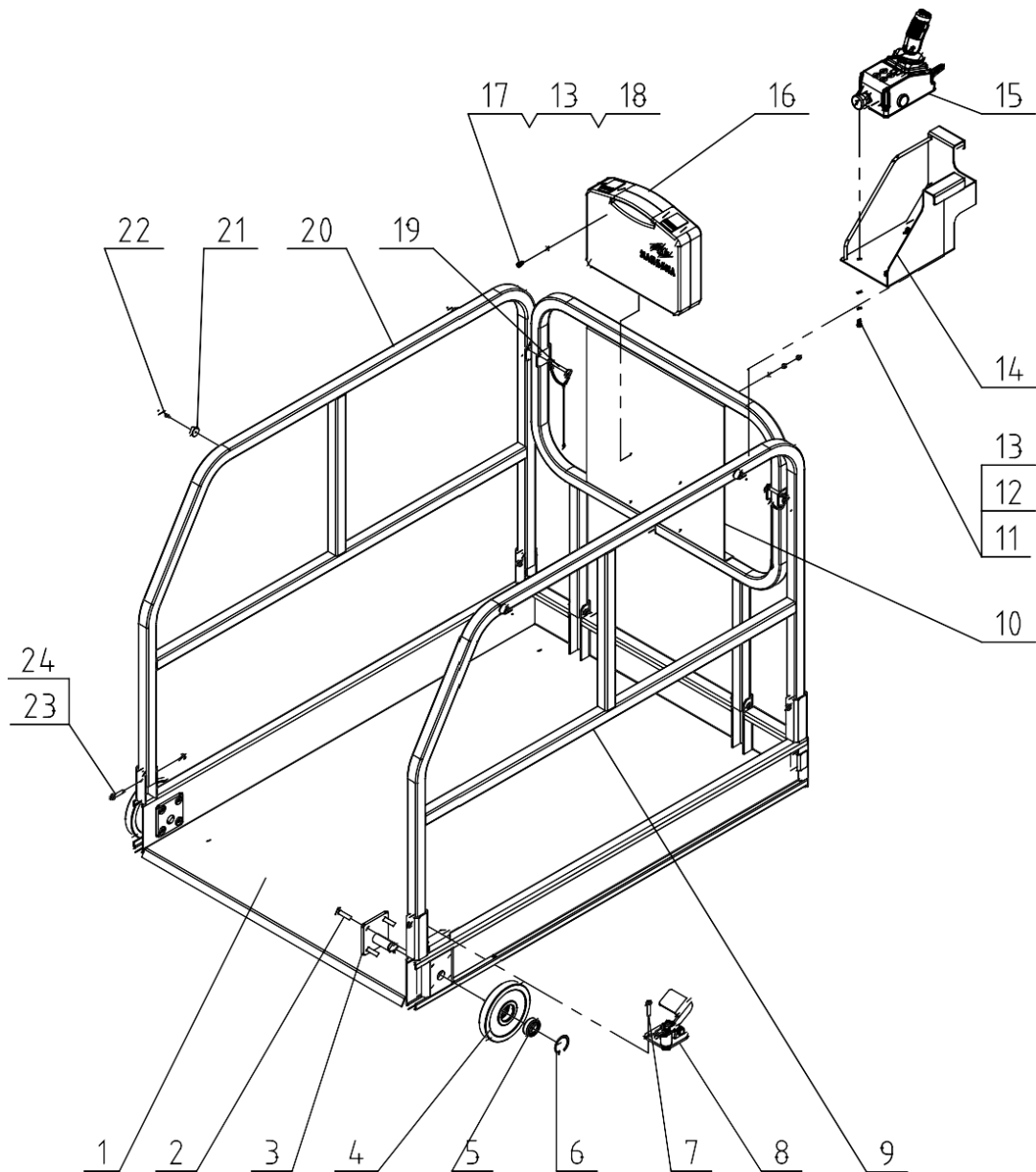
3.3 Fixed platform assembly (80/100/120/140/160XEN,160XENS)



3.3 Fixed platform assembly (80/100/120/140/160XEN,160XENS)

Item	Part No.	Description	Qty	Serial
1	140XEN-810100-000	Fixed platform	1	80/100/120/140XEN
	160XEN-810100-000	Fixed platform	1	160XEN,160XENS
2	GB/T 893.1 A-47	Clamp spring 47	2	
3	GB/T 276 6204-Z	Bearing6204-Z	2	
4	60XEND-800002-000	Roller	2	
5	140XEN-800500-000	Roller bracket	2	
6	GB/T 70 M10×45	Screw M10×45	8	
7	140XEN-810200-000	Left guardrail	2	80/100/120/140XEN
	160XEN-810200-000	Left guardrail	2	160XEN,160XENS
8	140XEN-800600-000	Spring Hinge	2	
9	GB/T 5789 M6×50	Bolt M6×50	12	
10	GB/T 6183 M6	Hexagon nut M6	12	
11	140XEN-810400-000	Rear guardrail	1	
12	140XEN-810500-000	Entrance door	1	
13	60XEND-800012-000	Rubber pad	2	
14	GB/T 5783 M5×16	Bolt M5×16	2	
15	GB/T 889 M5	Hexagon nut M5	2	
16	140XEN-800009-000	Spring	1	
17	140XEN-800001-000	Plastic pin	1	
18	GB/T 5789 M10×55	Bolt M10×55	1	
19	GB/T 6183 M10	Hexagon nut M10	1	
20	140XEN-800800-000	D-latch	2	
21	GB/T 5789 M8×60	Bolt M8×60	6	
22	GB/T 6183 M8	Hexagon nut M8	6	
23	78XEN-200002-000	Fixed plate	1	
24	GB/T 70.2 M5×12	Screw M5×12	2	
25	GB/T 97 5	Plain washer 5	2	
26	GB/T 93 5	Spring washer 5	2	

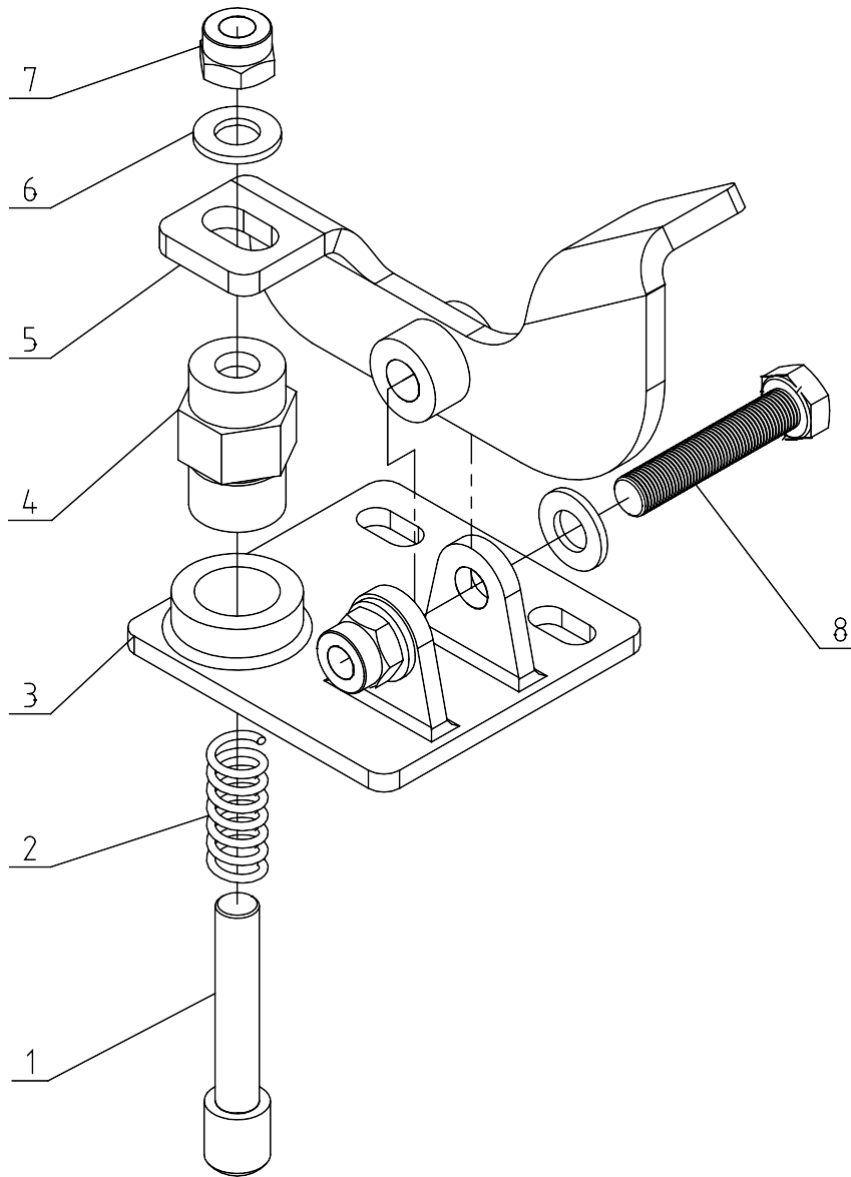
3.4 Extended platform assembly (80/100/120/140/160XEN,160XENS)



3.4 Extended platform assembly (80/100/120/140/160XEN,160XENS)

Item	Part No.	Description	Qty	Serial
1	140XEN-820100-000	Extension platform	1	
2	GB/T 70 M10×45	Screw M10×45	8	
3	140XEN-800500-000	Roller bracket	2	
4	60XEND-800001-000	Roller	2	
5	GB/T 276 6204-Z	Bearing6204-Z	2	
6	GB/T 893.1 A-47	Clamp spring 47	2	
7	GB/T 5789 M8×20	Bolt M8×20	2	
8	140XEN-801000-000	Platform pedal	1	Refer to legend 3.5
9	140XEN-820300-000	Right guardrail	1	
10	140XEN-820400-000	Front guardrail	1	
11	GB/T 5783 M6×16	Bolt M6×16	4	
12	GB/T 93 6	Spring washer 6	4	
13	GB/T 97 6	Plain washer 6	8	
14	140XEN-800400-000	Handle bracket	1	
15	78XEN-750000-G00	Control handle	1	
16	78XEN-820100-G00	File box	1	
17	GB/T 5789 M6×16	Bolt M6×16	4	
18	GB/T 923 M6	Hexagon nut M6	4	
19	140XEN-800800-000	D-latch	2	
20	140XEN-820200-000	Left guardrail	1	
21	60XEND-800012-000	Rubber pad	4	
22	GB/T 126181 4×16	Rivet 4×16	4	
23	GB/T 5789 M8×60	Bolt M8×60	6	
24	GB/T 6183 M8	Hexagon nut M8	6	

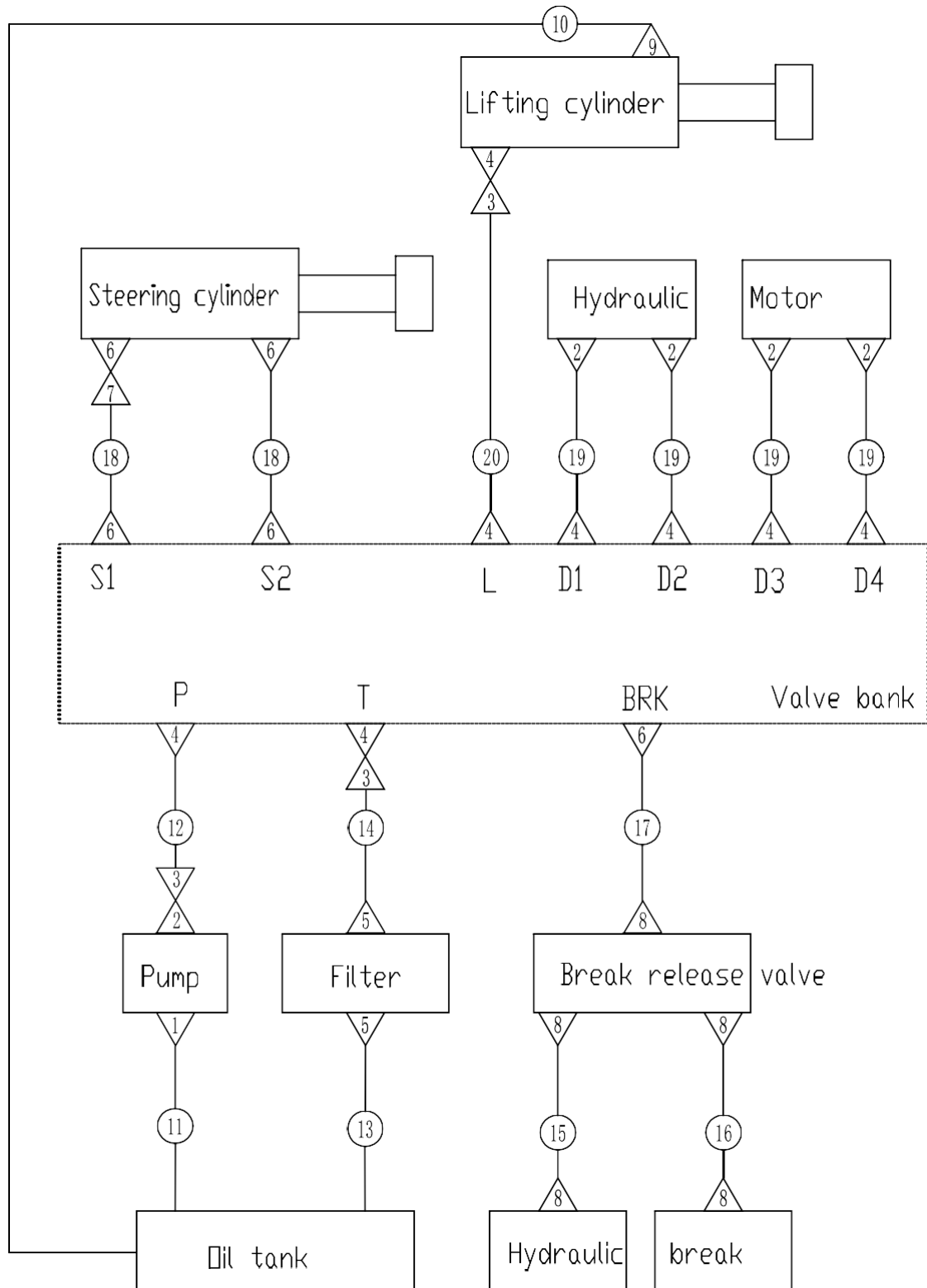
3.5 Pedal assembly



Item	Part No.	Description	Qty	Serial
1	140XEN-801004-000	Pin	1	
2	140XEN-801005-000	Spring	1	
3	140XEN-801001-000	Pedestal		
4	140XEN-801003-000	Guide sleeve	1	
5	140XEN-801002-000	Pedal	1	
6	GB/T 97 10	Plain washer 10	3	
7	GB/T 889 M10	Hexagon nut M10	2	
8	GB/T 5783 M10×50	Bolt M10×50	1	

Hydraulic system

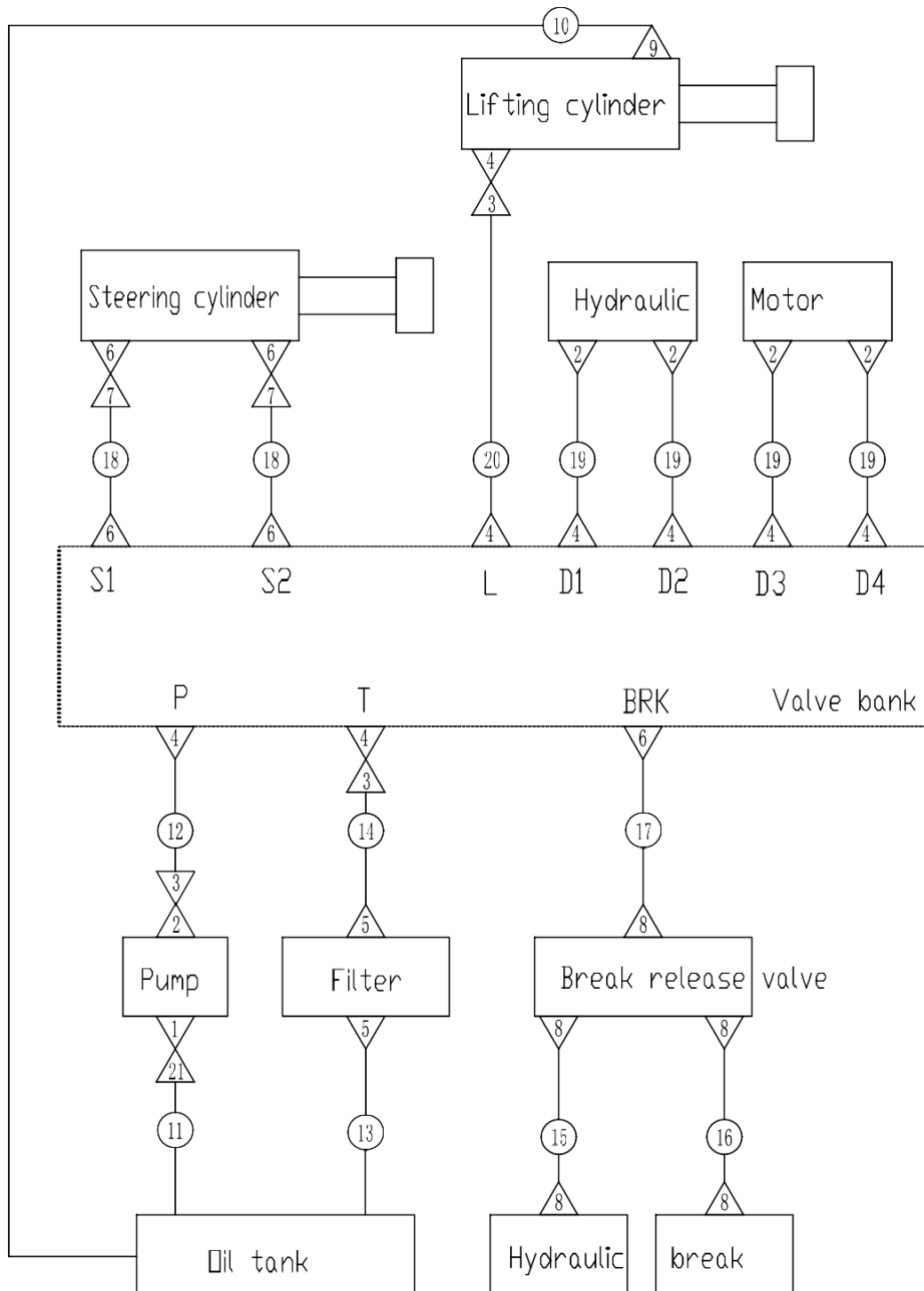
4.1 Hydraulic pipeline (65/78XEN)



4.1 Hydraulic pipeline (65/78XEN)

Item	Part No.	Description	Qty	Serial
1	JT-110824-G00	Connector G1/2-M24	1	
2	JT-110820-G00	Connector G1/2-M20	5	
3	JT-202020-G00	Connector M20	3	
4	JT-110620-G00	Connector G3/8-M20	8	
5	JT-102220-G00	Connector M22-M20	2	
6	JT-110416-G00	Connector G1/4-M16	5	
7	JT-201616-G00	Connector M16	1	
8	JT-110716-G00	Connector G7/16-M16	5	
9	160XEN-600001-000	Connector	1	
10	78XEN-630201-000	Air pipe	1	
11	78XEN-630001-004	Rubber pipe	1	
12	78XEN-630002-002	Rubber pipe	1	
13	78XEN-630010-001	Rubber pipe	1	
14	78XEN-630009-002	Rubber pipe	1	
15	140XEN-630008-002	Rubber pipe	1	
16	78XEN-630008-002	Rubber pipe	1	
17	78XEN-630006-001	Rubber pipe	1	
18	78XEN-630005-001	Rubber pipe	2	
19	78XEN-630004-001	Rubber pipe	4	
20	78XEN-630007-002	Rubber pipe	1	

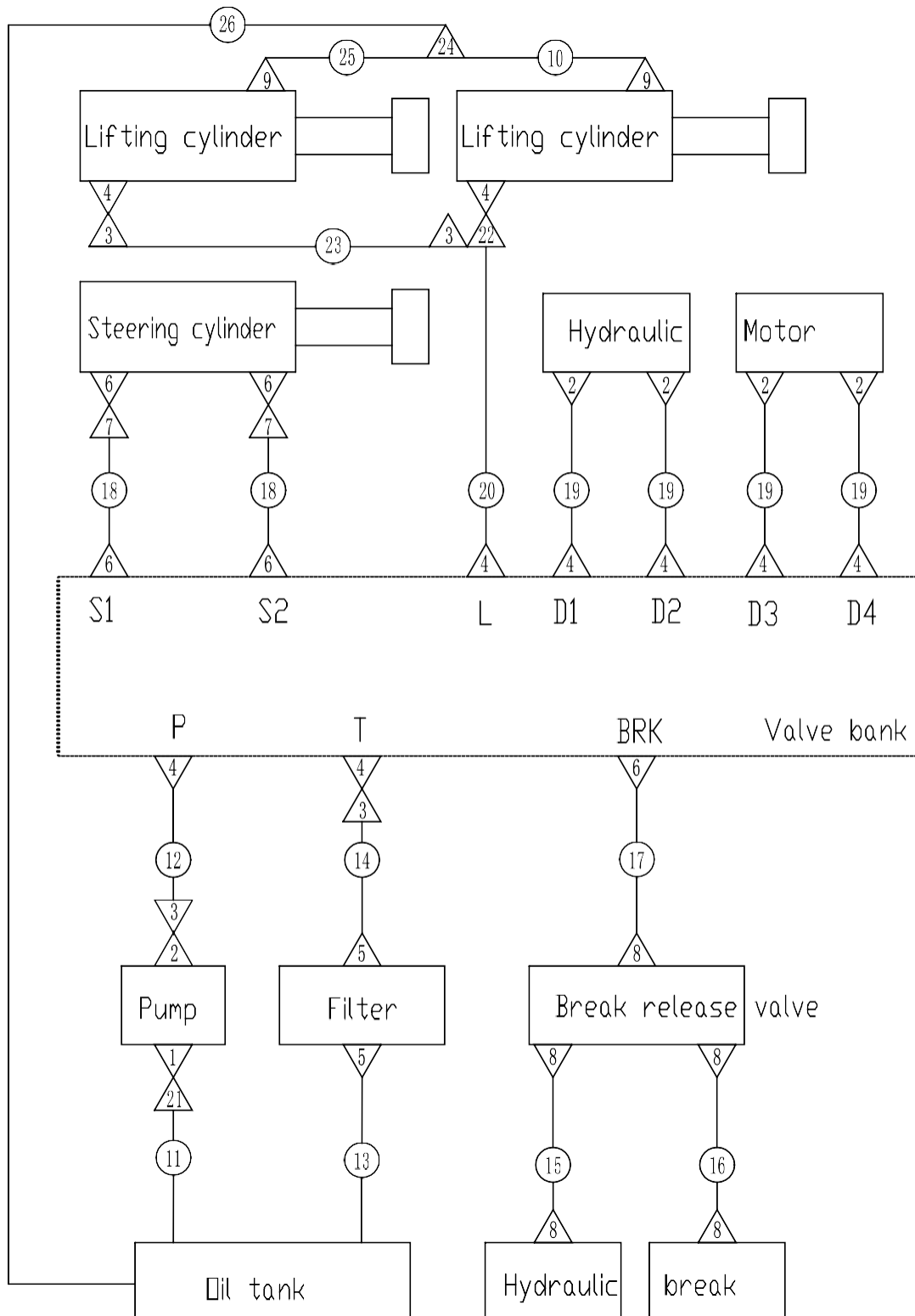
4.2 Hydraulic pipeline (80/100XEN,80/100XENS)



4.2 Hydraulic pipeline (80/100XEN,80/100XENS)

Item	Part No.	Description	Qty	Serial
1	JT-110824-G00	Connector G1/2-M24	1	
2	JT-110820-G00	Connector G1/2-M20	5	
3	JT-202020-G00	Connector M20	3	
4	JT-110620-G00	Connector G3/8-M20	8	
5	JT-102220-G00	Connector M22-M20	2	
6	JT-110416-G00	Connector G1/4-M16	5	
7	JT-201616-G00	Connector M16	2	80/100XEN
	JT-201616-G00	Connector M16	1	80/100XENS
8	JT-110716-G00	Connector G7/16-M16	5	
9	160XEN-600001-000	Connector	1	
10	140XEN-630001-002	Rubber pipe	1	
11	140XEN-630002-002	Rubber pipe	1	
12	140XEN-630009-003	Rubber pipe	1	
13	140XEN-630109-000	Rubber pipe	1	
14	160XEN-630014-000	Rubber pipe	1	80/100XEN
	140XEN-630008-002	Rubber pipe	1	80/100XENS
15	140XEN-630008-002	Rubber pipe	1	80/100XEN
	78XEN-630008-001	Rubber pipe	1	80/100XENS
16	140XEN-630006-000	Rubber pipe	1	
17	140XEN-630005-001	Rubber pipe	2	80/100XEN
	78XEN-630005-001	Rubber pipe	2	80/100XENS
18	140XEN-630004-001	Rubber pipe	4	80/100XEN
	80XENS-630004-000	Rubber pipe	4	80/100XENS
19	140XEN-630007-002	Rubber pipe	1	
20	80XEN-630201-000	Air pipe	1	80/100XEN
	80XENS-630201-000	Air pipe	1	80/100XENS
21	JT-202424-G00	Connector M24	1	

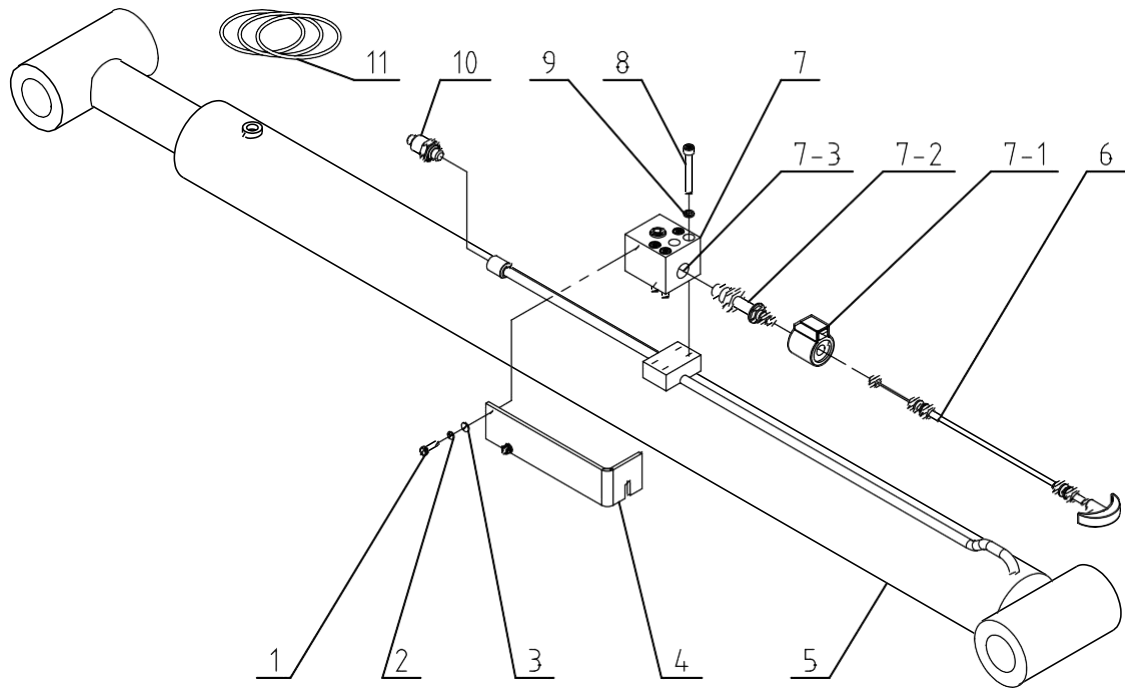
4.3 Hydraulic pipeline (120/140XEN,160XEN,160XENS)



4.3 Hydraulic pipeline (120/140XEN,160XEN,160XENS)

Item	Part No.	Description	Qty	Serial
1	JT-110824-G00	Connector G1/2-M24	1	
2	JT-110820-G00	Connector G1/2-M20	5	
3	JT-202020-G00	Connector M20	4	
4	JT-110620-G00	Connector G3/8-M20	9	
5	JT-102220-G00	Connector M22-M20	2	
6	JT-110416-G00	Connector G1/4-M16	5	
7	JT-110716-G00	Connector G7/16-M16	5	
8	JT-201616-G00	Connector M16	2	
9	160XEN-600001-000	Connector	2	
10	140XEN-630202-000	Air pipe	1	120/140XEN
	160XEN-630202-000	Air pipe	1	160XEN,160XENS
11	140XEN-630001-002	Rubber pipe	1	
12	140XEN-630002-002	Rubber pipe	1	
13	140XEN-630009-003	Rubber pipe	1	
14	140XEN-630109-000	Rubber pipe	1	
15	160XEN-630014-000	Rubber pipe	1	120/140XEN
	160XEN-630008-001	Rubber pipe	1	160XEN,160XENS
16	140XEN-630008-002	Rubber pipe	1	120/140XEN,160XENS
	160XEN-630014-000	Rubber pipe	1	160XEN
17	140XEN-630006-000	Rubber pipe	1	120/140XEN
	160XEN-630006-000	Rubber pipe	1	160XEN,160XENS
18	140XEN-630005-001	Rubber pipe	2	120/140XEN
	160XEN-630005-001	Rubber pipe	2	160XEN,160XENS
19	140XEN-630004-001	Rubber pipe	4	120/140XEN
	160XEN-630004-001	Rubber pipe	4	160XEN,160XENS
20	140XEN-630007-002	Rubber pipe	1	120/140XEN
	160XEN-630007-002	Rubber pipe	1	160XEN,160XENS
21	JT-202424-G00	Connector M24	1	
22	JT-312020-G00	Connector M20	1	
23	140XEN-630010-004	Rubber pipe	1	120/140XEN
	160XEN-630010-004	Rubber pipe	1	160XEN,160XENS
24	76XEND-600001-G00	Connector	1	
25	140XEN-630201-000	Air pipe	1	120/140XEN
	160XEN-630201-000	Air pipe	1	160XEN,160XENS
26	140XEN-630203-000	Air pipe	1	120/140XEN
	160XEN-630203-000	Air pipe	1	160XEN,160XENS

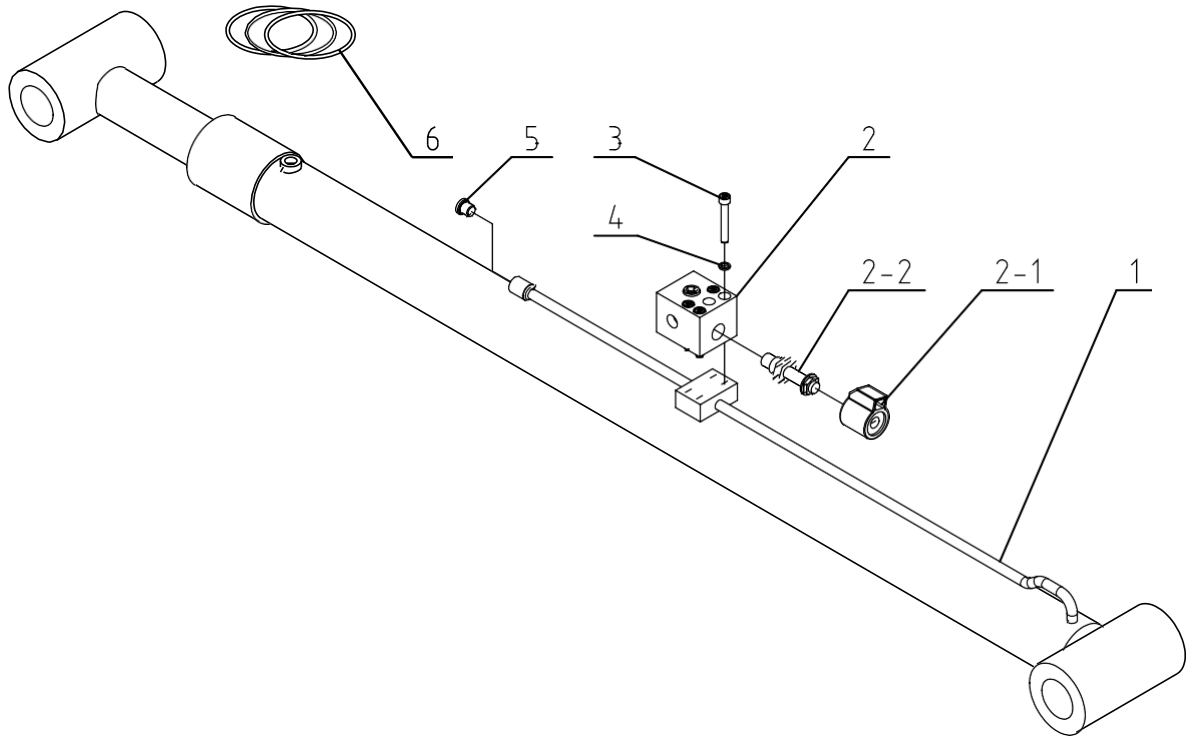
4.4 Lifting cylinder assembly



4.4 Lifting cylinder assembly

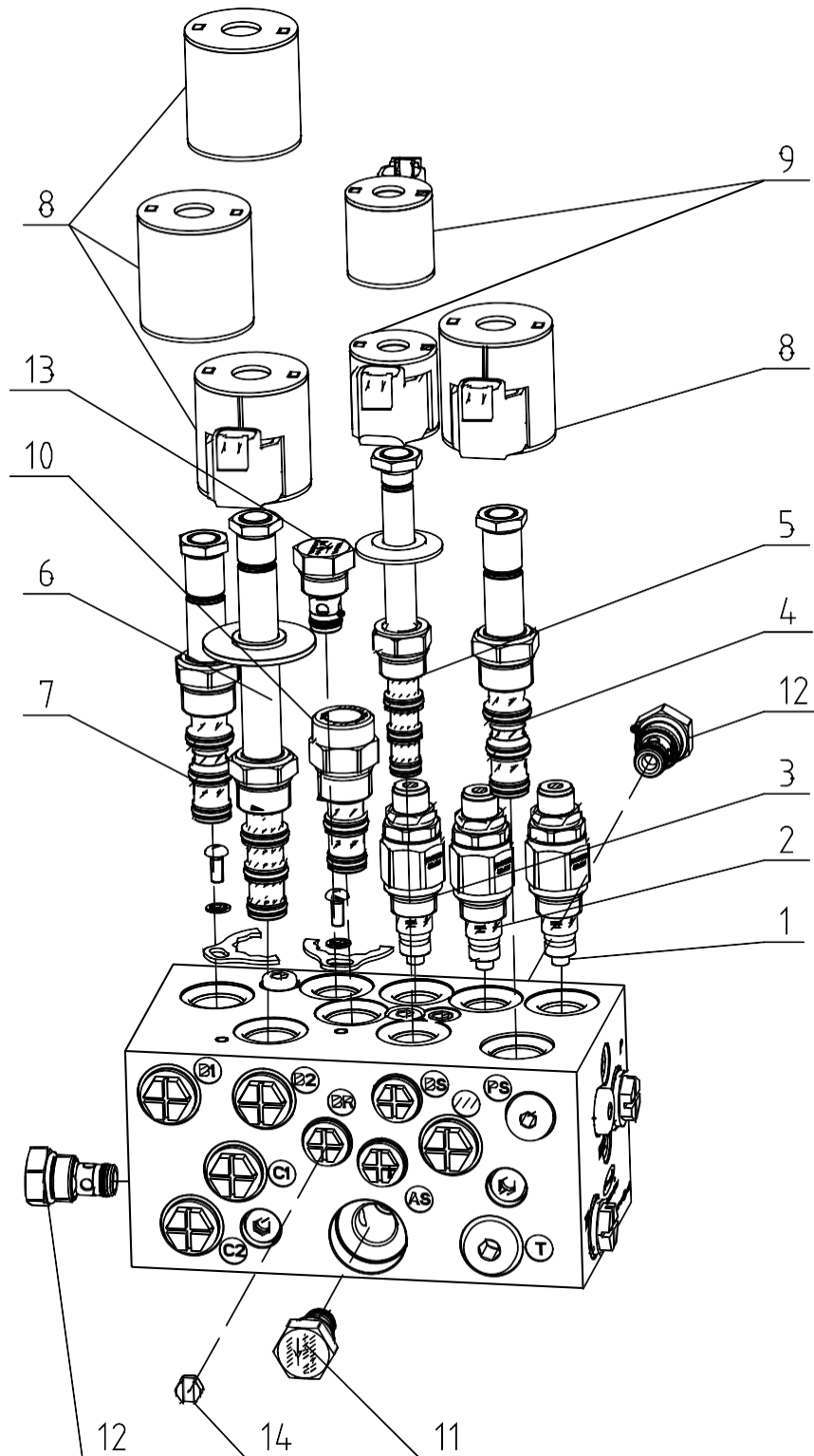
Item	Part No.	Description	Qty	Serial
1	GB/T 5783 M6×16	Bolt M6×16	2	
2	GB/T 93 6	Spring washer 6	2	
3	GB/T 97 6	Plain washer 6	2	
4	140XEN-400410-000	Install panel	1	
5	78XEN-620100-002	Lifting cylinder	1	65/78XEN
	80XENS-620100-000	Lifting cylinder	1	80/100XENS
	140XEN-620100-001	Lifting cylinder	1	80/100/120/140XEN
	160XEN-620100-001	Lifting cylinder	1	160XEN,160XENS
6	78XEN-640500-010	Digging rope	1	65/78XEN
	140XEN-400440-010	Digging rope	1	80/100/120/140XEN, 80/100XENS
	160XEN-400440-010	Digging rope	1	160XEN,160XENS
7	140XEN-641200-G30	Lower cylinder valve	1	
7-1	140XEN-641202-G30	Solenoid coil	1	
7-2	140XEN-641201-G30	Valve element	1	
7-3	140XEN-641205-G30	Damping plug	1	
8	GB/T 70 M8×60	Screw M8×60	4	
9	GB/T 93 8	Spring washer 8	4	
10	78XEN-741300-G01	Pressure sensor block	1	
11	78XEN-620001-000	Cylinder seal package	1	65/78XEN
	80XENS-620001-000	Cylinder seal package	1	80/100XENS
	140XEN-620001-000	Cylinder seal package	1	80/100/120/140/160XEN, 160XENS

4.5 Upper lifting cylinder assembly (120/140XEN, 160XEN, 160XENS)



Item	Part No.	Description	Qty	Serial
1	140XEN-620200-000	Lifting cylinder	1	120/140XEN
	160XEN-620200-001	Lifting cylinder	1	160XEN,160XENS
2	140XEN-640400-G03	Upper cylinder valve	1	
2-1	140XEN-640402-G03	Solenoid coil	1	
2-2	140XEN-640401-G03	Valve element	1	
3	GB/T 70 M8×55	Screw M8×55	4	
4	GB/T 93 8	Spring washer 8	4	
5	JT-400014-G00	Plug M14	1	
6	140XEN-620002-000	Cylinder seal package	1	

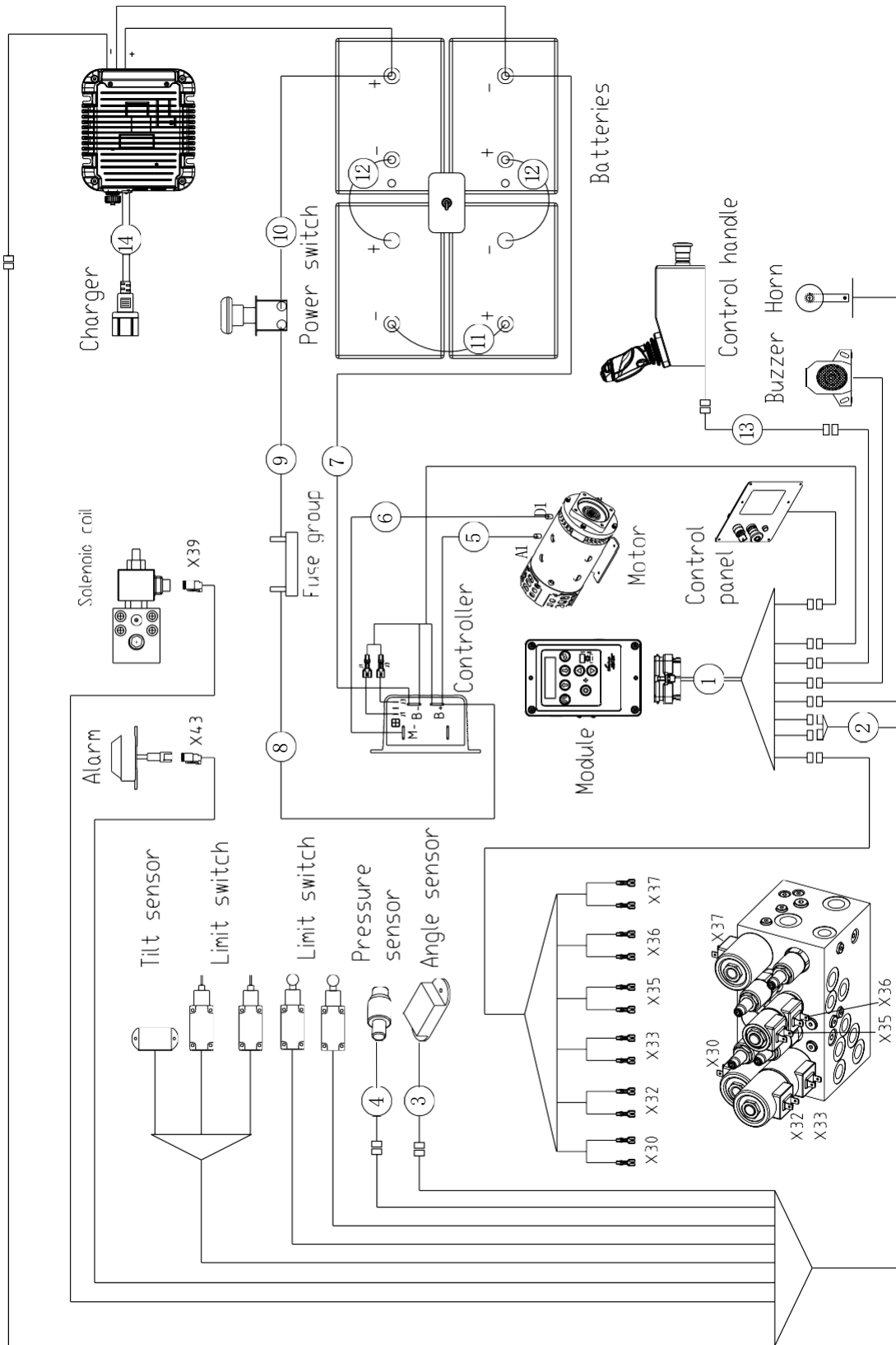
4.6 Valve bank



4.6 Valve bank

Item	Part No.	Description	Qty	Serial
1	140XEN-640101-G20	Relief valve	1	
2	140XEN-640102-G20	Relief valve	1	
3	140XEN-640103-G20	Relief valve	1	
4	140XEN-640104-G20	Solenoid directional valve	1	
5	140XEN-640105-G20	Solenoid directional valve	1	
6	140XEN-640106-G20	Solenoid directional valve	1	
7	140XEN-640107-G20	Solenoid directional valve	1	
8	140XEN-640108-G20	Solenoid Coil	4	
9	140XEN-640109-G20	Solenoid Coil	2	
10	140XEN-640110-G20	Flow valve	1	
11	140XEN-640111-G20	Check valve	1	
12	140XEN-640112-G20	Check valve	2	
13	140XEN-640113-G20	Check valve	1	
14	140XEN-640114-G20	Orifice	1	

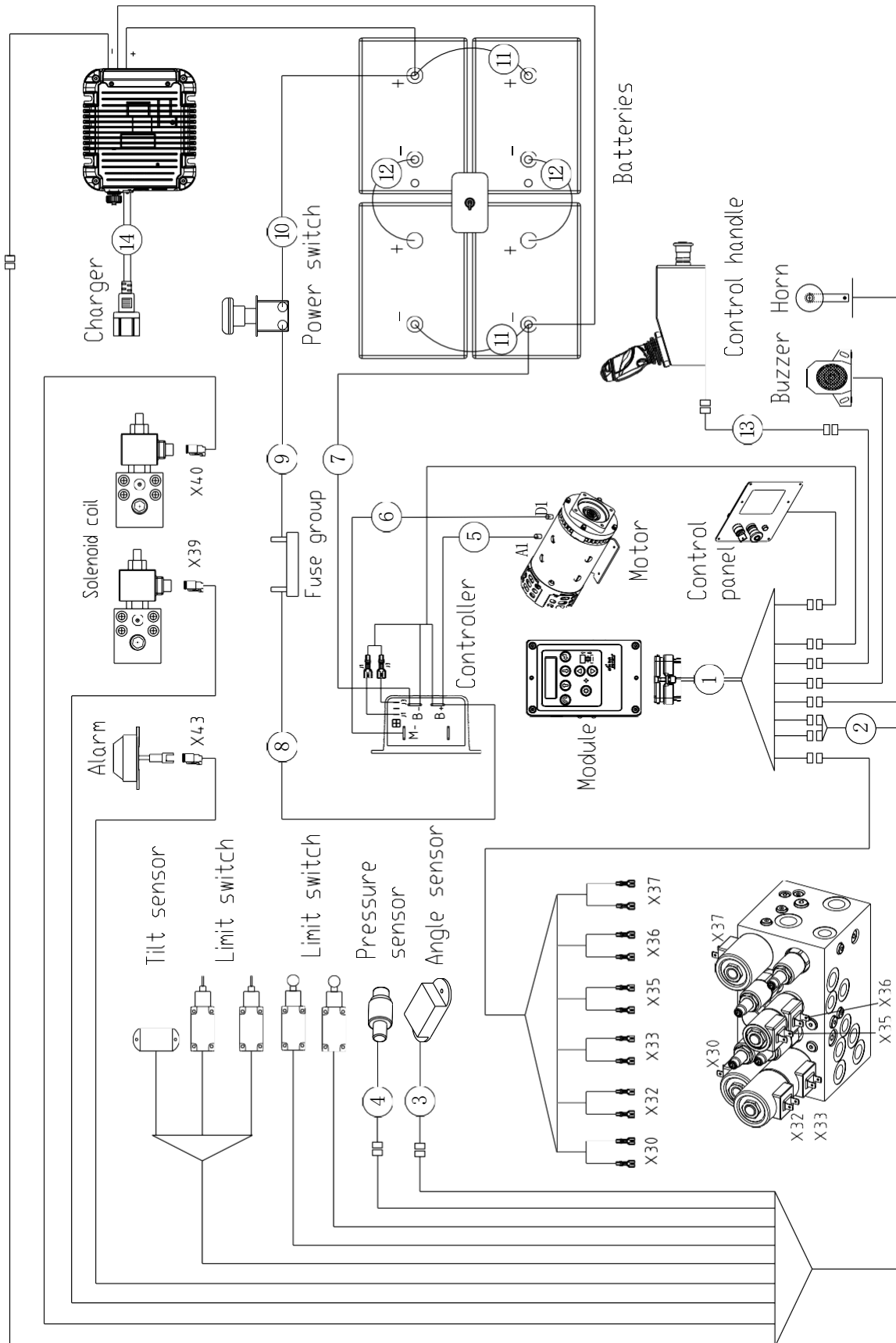
5.1 Electric harness (65/78XEN,80/100XENS)



5.1 Electric harness (65/78XEN,80/100XENS)

Item	Part No.	Description	Qty	Serial
1	HS0708HI-710000-Q01	Main harness	1	65/78XEN
	HS1412HI-710000-Q01	Main harness	1	80/100XENS
2	78XEN-720000-002	Switch harness	1	65/78XEN
	80XENS-720000-002	Switch harness	1	80/100XENS
3	78XEN-700300-000	Angle sensor harness	1	65/78XEN
	140XEN-700300-000	Angle sensor harness	1	80/100XENS
4	78XEN-700200-001	Pressure sensor harness	1	65/78XEN
	140XEN-700200-002	Pressure sensor harness	1	80/100XENS
5	HS1412AI-730300-000	Cable	1	
6	HS1412AI-730600-000	Cable	1	
7	78XEN-730300-000	Cable	1	65/78XEN
	80XENS-730300-000	Cable	1	80/100XENS
8	78XEN-730600-000	Cable	1	65/78XEN
	80XENS-730600-000	Cable	1	80/100XENS
9	78XEN-730200-000	Cable	1	65/78XEN
	140XEN-730200-000	Cable	1	80/100XENS
10	78XEN-730100-000	Cable	1	65/78XEN
	140XEN-730100-004	Cable	1	80/100XENS
11	78XEN-730800-000	Cable	1	
12	78XEN-730700-000	Cable	2	
13	65XEN-700100-001	Handle cable	1	65XEN
	78XEN-700100-001	Handle cable	1	78XEN
	80XENS-700100-001	Handle cable	1	80XENS
	100XEN-700100-001	Handle cable	1	100XENS
14	78XEN-760201	Charger wire	1	

5.2 Electric harness (80/100/120/140/160XEN, 160XENS)

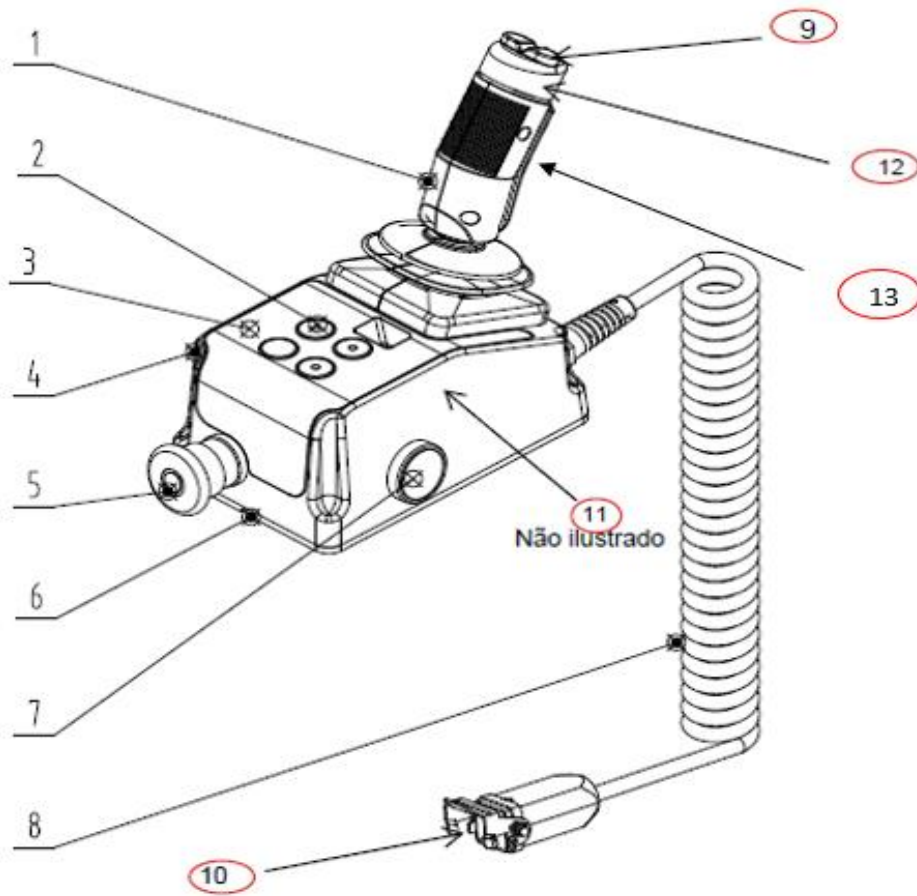


5.2 Electric harness (80/100/120/140/160XEN, 160XENS)

Item	Part No.	Description	Qty	Serial
1	HS1412HI-710000-Q01	Main harness	1	
2	100XEN-720000-002	Switch harness	1	80/100XEN
	140XEN-720000-004	Switch harness	1	120/140XEN
	160XEN-720000-004	Switch harness	1	160XEN, 160XENS
3	140XEN-700300-000	Angle sensor harness	1	80/100/120/140XEN
	160XEN-700300-000	Angle sensor harness	1	160XEN, 160XENS
4	140XEN-700200-002	Pressure sensor harness	1	80/100/120/140XEN
	160XEN-700200-002	Pressure sensor harness	1	160XEN, 160XENS
5	HS1412AI-730300-000	Cable	1	
6	HS1412AI-730600-000	Cable	1	
7	160XEN-730300-002	Cable	1	80/100/120/140XEN
	160XEN-730300-002	Cable	1	160XEN, 160XENS
8	160XEN-730600-001	Cable	1	
9	140XEN-730200-000	Cable	1	
10	140XEN-730100-004	Cable	1	
11	140XEN-730800-000	Cable	2	
12	140XEN-730700-000	Cable	2	
13	80XENS-700100-001	Handle cable	1	80XEN
	100XEN-700100-001	Handle cable	1	100XEN
	120XEN-700100-001	Handle cable	1	120XEN
	140XEN-700100-001	Handle cable	1	140XEN
	160XENS-700100-000	Handle cable	1	160XEN, 160XENS
14	78XEN-760201	Charger wire	1	

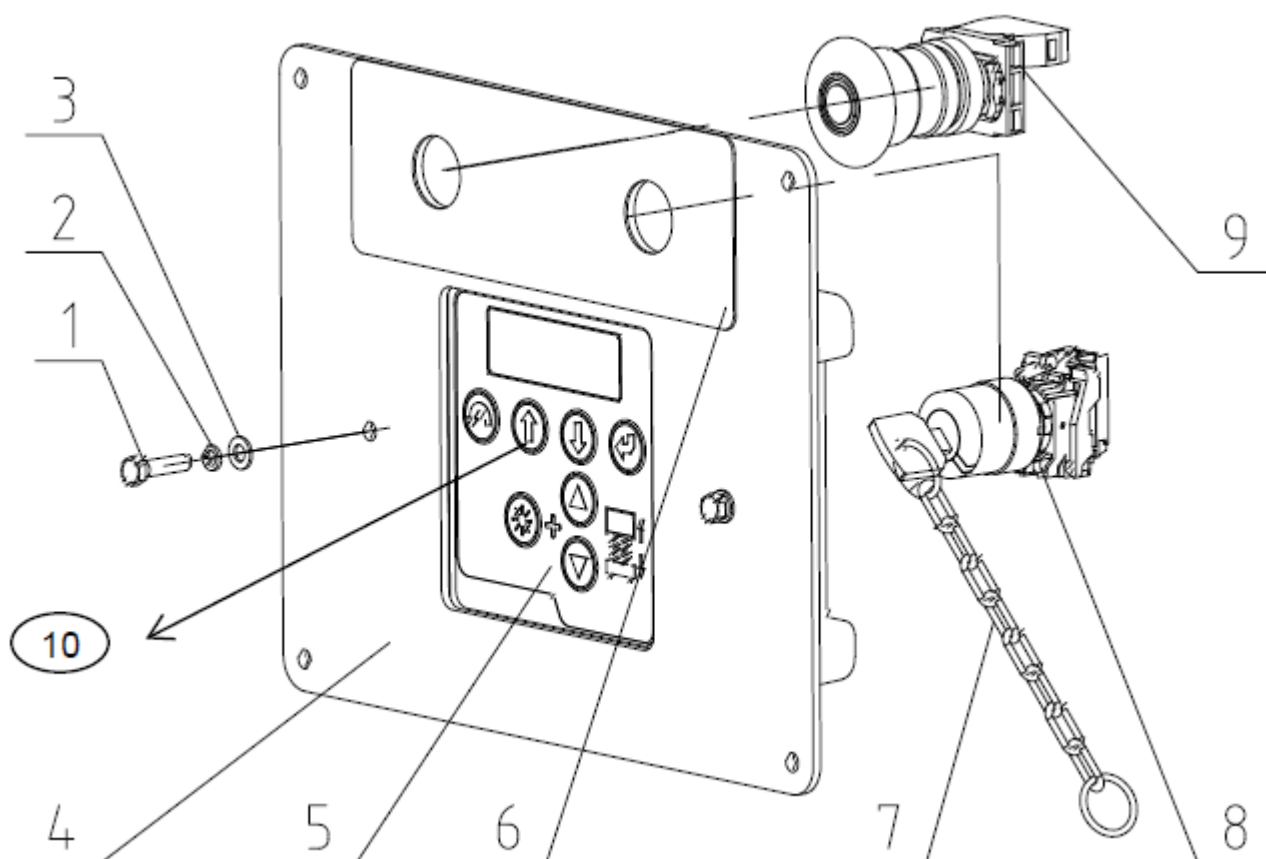
5.3 control handle

9



Item	Part No.	Description	Qty	Serial
1	78XEN-750100-G00	Control handle	1	
2	78XEN-750200-G00	Panel	4	
3	78XEN-750301-S00	Panel sticker	1	
4	78XEN-750302-S00	Handle body	1	
5	78XEN-750400-G00	Emergency stop switch	1	
6	78XEN-750303-S00	Cover plate	1	
7	78XEN-750500-G00	Buzzer	1	
8	78XEN-750600-G00	Spiral wire	1	
9	80355	Botão direcional	1	
10	103030	Conector	1	
11	3012-203001-3-S	Placa onboard	1	
12	80095	Coifa de proteção	1	
13	80252	Botão do gatilho	1	

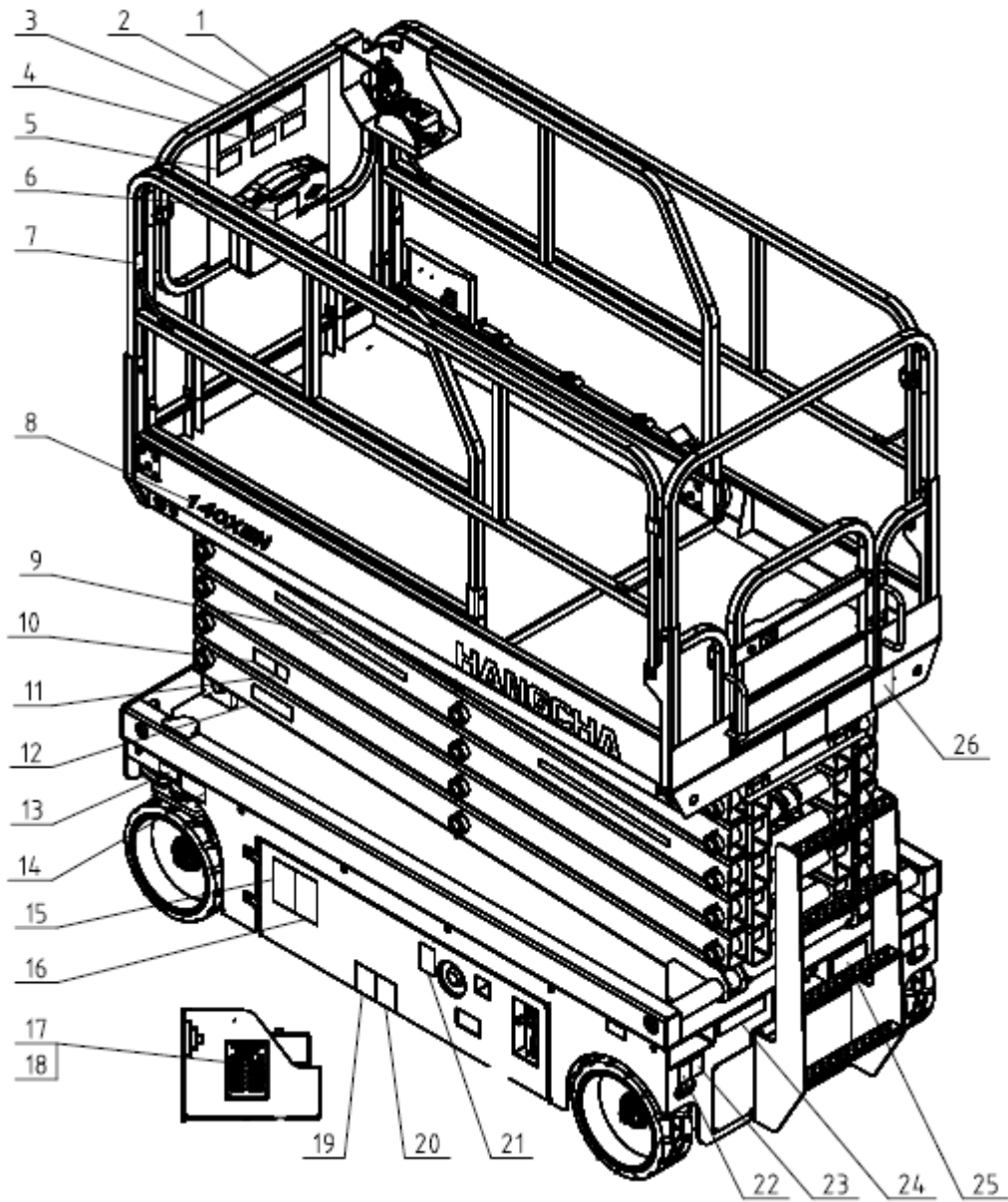
5.4 Control panel assembly

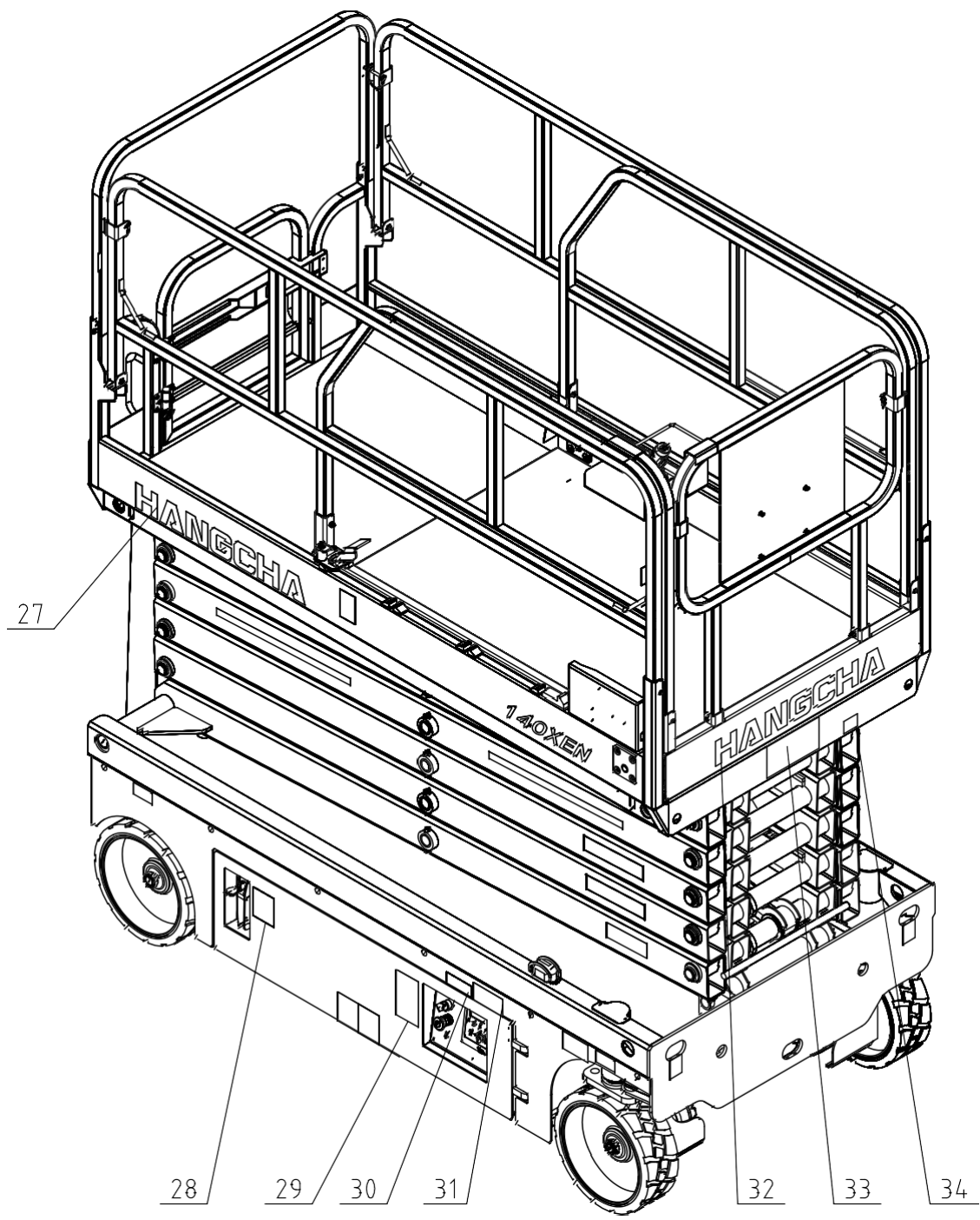


Item	Part No.	Description	Qty	Serial
1	GB/T 5783 M6×16	Bolt M6×16	2	
2	GB/T 93 6	Spring washer 6	2	
3	GB/T 97 6	Plain washer 6	2	
4	60XEND-400011-001	Control panel	1	
5	60XEND-740200-G01	Control module ECU	1	
6	60XEND-740504-000	Panel sticker	1	
7	78XEN-400004-G00	Chain	1	
8	GTHZ120-710400-G00	Key switch	1	
9	GTHZ120-720700-G00	Emergency stop switch	1	
10	60XEND-740201-G01	MEMBRANA DO PAINEL	1	

6 Label

6.1 Label diagram





6.1 Label diagram

Item	Part No.	Description	Qty	Serial
1	65XEN-020005-001	Rated load	2	65/120XEN
	78XEN-020005-001	Rated load	2	78XEN
	80XENS-020005-001	Rated load	2	80XENS
	100XENS-020005-001	Rated load	2	100XENS,160XEN, 160XENS
	100XEN-020005-001	Rated load	2	80/100XEN
	140XEN-020005-001	Rated load	2	140XEN
2	140XEN-020013-001	Overload tipping hazard	1	
3	140XEN-020032-001	Safe distance	1	
4	140XEN-020011-001	Tipping hazard	1	
5	140XEN-020012-001	Tilt alarm operation	1	
6	HV110D-020002-001	Save the manual	1	
7	140XEN-020024-001	Safety belt hook	4	
8	65XEN-020001-001	Model number	2	65XEN
	78XEN-020001-001	Model number	2	78XEN
	80XENS-020001-001	Model number	2	80XENS
	100XENS-020001-001	Model number	2	100XENS
	80XEN-020001-001	Model number	2	80XEN
	100XEN-020001-001	Model number	2	100XEN
	120XEN-020001-001	Model number	2	120XEN
	140XEN-020001-001	Model number	2	140XEN
	160XEN-020001-001	Model number	2	160XEN
	160XENS-020001-001	Model number	2	160XENS
9	78XEN-020009-000	Reflective stripe	4	
10	140XEN-020008-001	Away from moving parts		
11	GTHZ120-020014-001	Anti-pinch hand		
12	140XEN-020010-001	Maintenance instruction		
13	78XEN-020022-001	Tire load	1	65/78XEN
	78XEN-020022-001	Tire load	1	80/100/120/140/160XEN 80/100/160XENS
14	140XEN-020007-001	Tire change warning	2	
15	HV110D-020017-001	Explosion and fire risk		
16	GTHZ120-020012-001	Battery change Warning	1	
17		Nameplate	1	
18	GB/T12618.1	Rivet 4×12	4	
19	HV110D-020007-001	Forklift position	4	
20	GTHZ120-020010-001	Press foot warning	2	

21	HV110D-020011-001	Mains switch	1	
22	R960-020035-001	Lifting hole	4	
23	GTWZ110-020013-000	Binding position	4	
24	60XEND-020020-000	Emergency descent instruction	1	
25	78XEN-020006-000	Brake release Instructions	1	
26	78XEN-020033-001	MAX. manual force	1	65/78/80/100/120XEN
	140XEN-020033-001	MAX. manual force	1	140/160XEN,80/100/160XENS
27	78XEN-020017-000	Trademark	2	
28	HV110D-020018-001	Hydraulic sputtering hazard	1	
29	140XEN-020016-001	Preoperation check	1	
30	140XEN-020015-001	Operation instruction	1	
31	GTHZ120-020008-001	Waterproof warning	1	
32	GTHZ120-020022-000	Trademark	1	
33	78XEN-020030-000	IPAF symbol	1	
34	R960-020012-001	CE symbol	1	
	KITADESIVO01	Kit de adesivos 80	1	
	KITADESIVO02	Kit de adesivos 100	1	
	KITADESIVO03	Kit de adesivos 120	1	
	KITADESIVO04	Kit de adesivos 140	1	

HANGCHA
P L A T A F O R M A S A É R E A S

Master Dealer Brasil - Macromaq

BR 101, Km 210 - São José - SC

+55 48 3257 1555

vendas@hangchaplataformas.com.br

www.hangchaplataformas.com.br