

Parts Catalog

80/100XENS Scissor working platform

杭叉集团股份有限公司

HANGCHA GROUP CO., LTD

Contents

Preface.....	- 1 -
1 Chassis	
1-1 Steering system.....	- 3 -
1-2 Pothole guard.....	- 5 -
1-3 Side door assembly.....	- 7 -
1-4 The Oil tank assembly.....	- 9 -
1-5 The oil pump motor.....	- 10 -
1-6 Chassis parts assembly.....	- 11 -
2 Scissor	
2-1 Part one.....	- 13 -
2-2 Part two (80XENS)	- 15 -
2-3 Part two (100XENS)	- 17 -
3 Platform	
3-1 Fixed platform.....	- 19 -
3-2 Mobile platform.....	- 21 -
4 The vehicle assembly	
4-1 80XENS vehicle assembly.....	- 23 -
4-2 100XENS vehicle assembly.....	- 25 -
4-3 Sticker schematic.....	- 27 -
5 Hose assembly	
5-1 Diagram of hose connection 1.....	- 29 -
5-2 Diagram of hose connection 2.....	- 31 -
5-3 Diagram of hose connection 3.....	- 33 -
6 Schematic diagram of electrical connection.....	- 35 -

Preface

Dear customers, thank you very much for your interest in and choice of the Aerial work platform of HANGCHA GROUP CO.,LTD.

You should pay attention to the following points when using our products:

1. Comply with local laws and regulations;
2. The operation manual contains important information about the products. Please carefully read all contents of the operation manual before use. After you are familiar with and correctly understand the operation instructions of the manual, you can operate in strict accordance with the requirements of the operation manual.

3. Most possible safety hazards and operational precautions are included in the manual. However, due to the complexity and variability of actual working conditions, the manual cannot cover all risks and safety hazards. It is necessary to ensure the absolute safety of operators during the operation to ensure that the operation will not cause damage to the product.

4. The technical parameters, diagrams, forms, etc. contained in the manual are all the latest version when the manual was written. Due to the continuous update of products and technologies, the company reserves the right to update technical parameters and relevant information without prior notice. If the manual is inconsistent with the actual product, please ask our after-sales staff for the latest information.

Before you order accessories, please first confirm the following situation:

1. What kind of car is the part you want to order?
2. Which part or system do you want to order parts from?

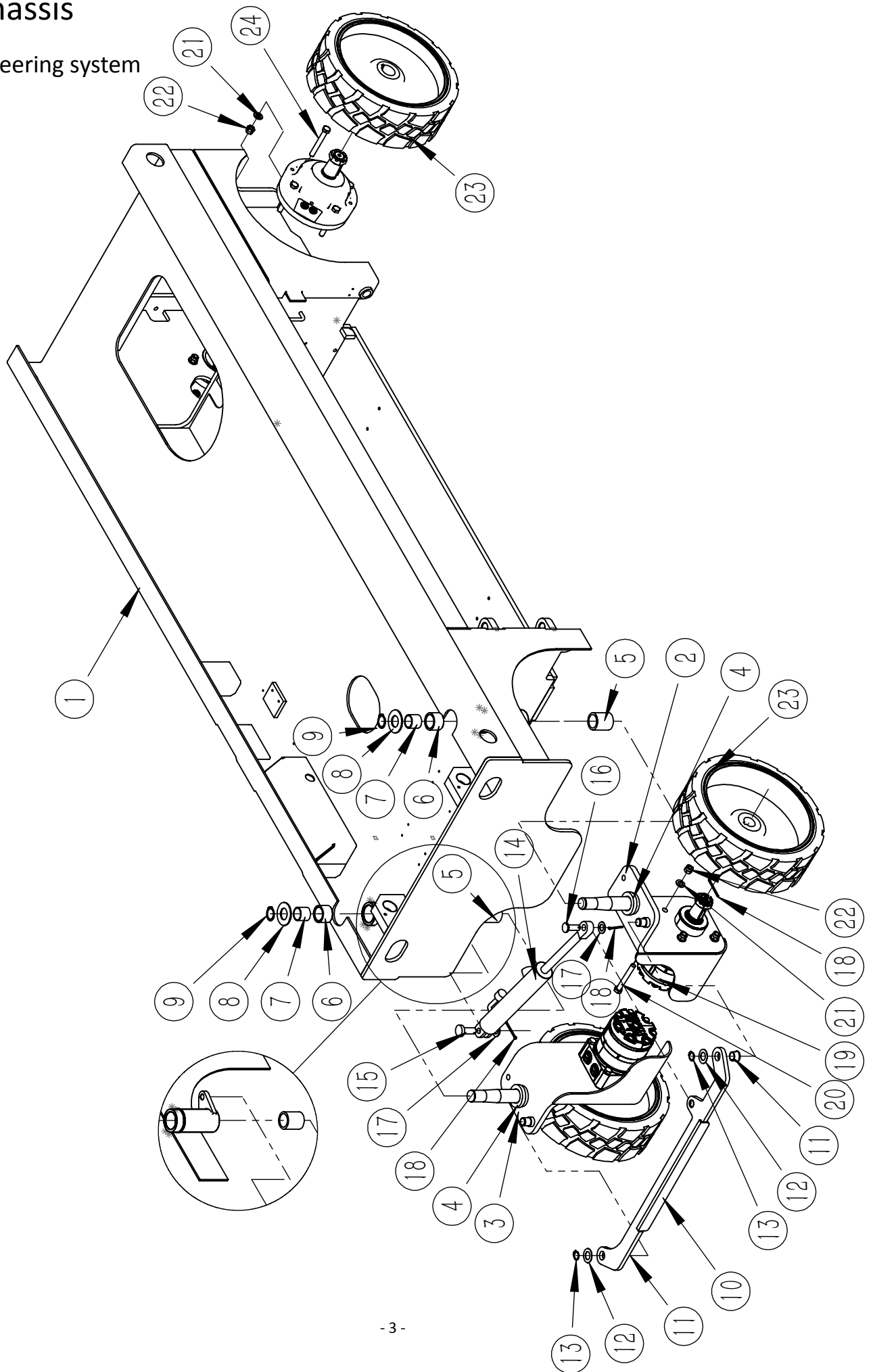
3. After determining which part or system part, the corresponding page number is found in the parts catalogue (table);

4. The serial number of the corresponding part is found on the page number, and the name of the figure number of the part is found in the list of parts.

5. If you want to place an order, you need to tell us the quantity you need in addition to the above information.

1 Chassis

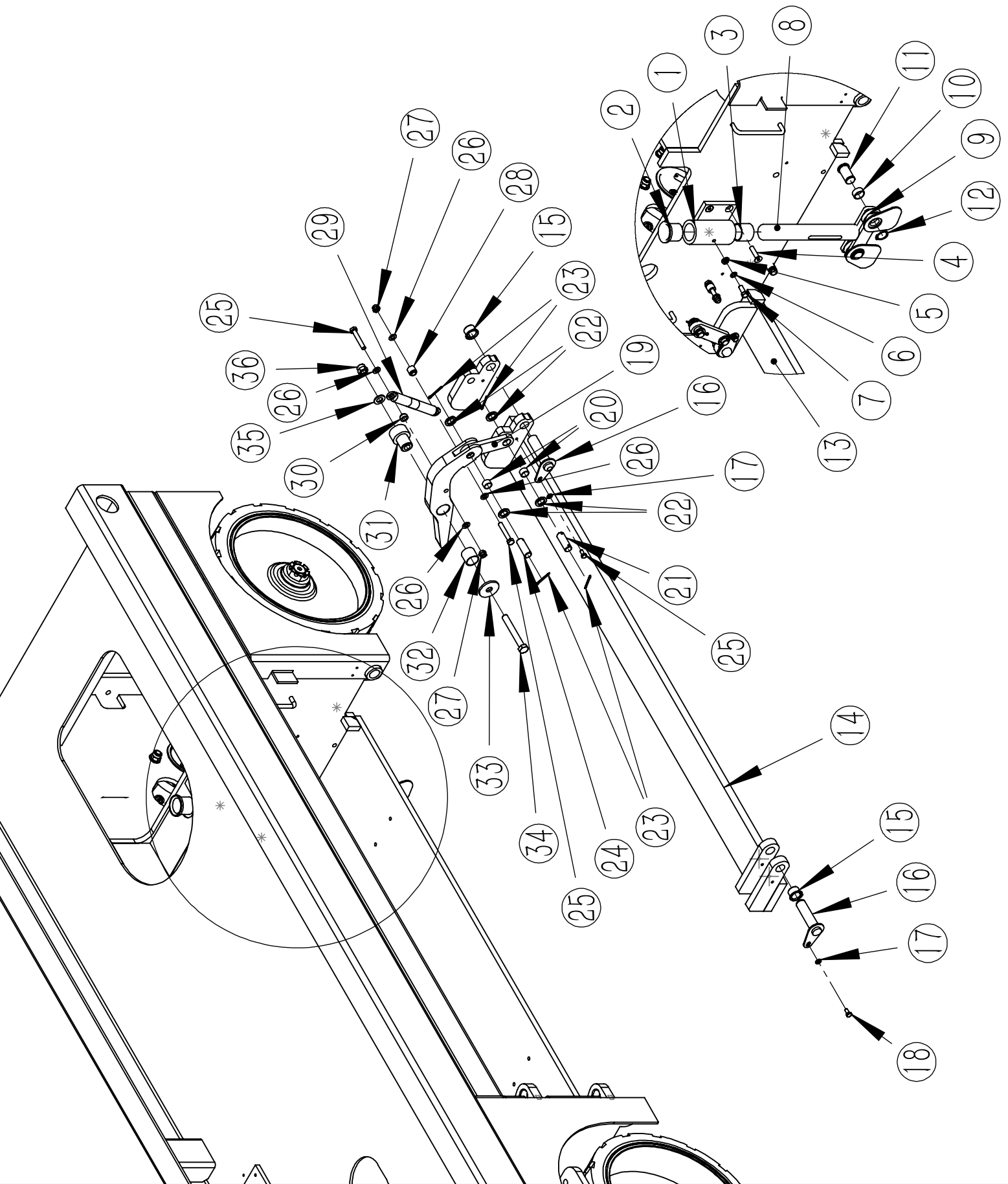
1-1 Steering system



1-1 Steering system

NO.	Figure number	name	Part number	Quantity	Product model
1	80XENS-410000-000	frame		1	80XENS,100XENS
2	80XENS-451000-000	stent		1	80XENS,100XENS
3	80XENS-452000-000	stent		1	80XENS,100XENS
4	78XEN-450002-001	Copper bush		2	80XENS,100XENS
5	CT-523550-G00	Bushing		2	80XENS,100XENS
6	78XEN-450005-001	Shaft sleeve		2	80XENS,100XENS
7	CT-503030-G00	Bushing		2	80XENS,100XENS
8	78XEN-300001-000	Thick gasket		2	80XENS,100XENS
9	GB894-30	clamp spring 30		2	80XENS,100XENS
10	78XEN-450300-000	Drag link		1	80XENS,100XENS
11	CT-220115-G00	Bushing		2	80XENS,100XENS
12	GB96.2—20	Gasket		2	80XENS,100XENS
13	GB894-20	clamp spring 20		2	80XENS,100XENS
14	78XEN-620200-000	Steering cylinder		1	80XENS,100XENS
15	78XEN-010006-000	pin		1	80XENS,100XENS
16	78XEN-010005-000	pin		1	80XENS,100XENS
17	GB97.1—16	Gasket		2	80XENS,100XENS
18	GB91-4×50	Cotter pin		6	80XENS,100XENS
19	80XENS-130100-G00	Hydraulic motor		2	80XENS,100XENS
20	GB5783-12×90	bolt		8	80XENS,100XENS
21	GB97.1—12	Gasket		16	80XENS,100XENS
22	GB889.1-12	lock nut		16	80XENS,100XENS
23	140XEN-810100-G00	tire		4	80XENS,100XENS
24	GB5783-12×100	bolt		8	80XENS,100XENS

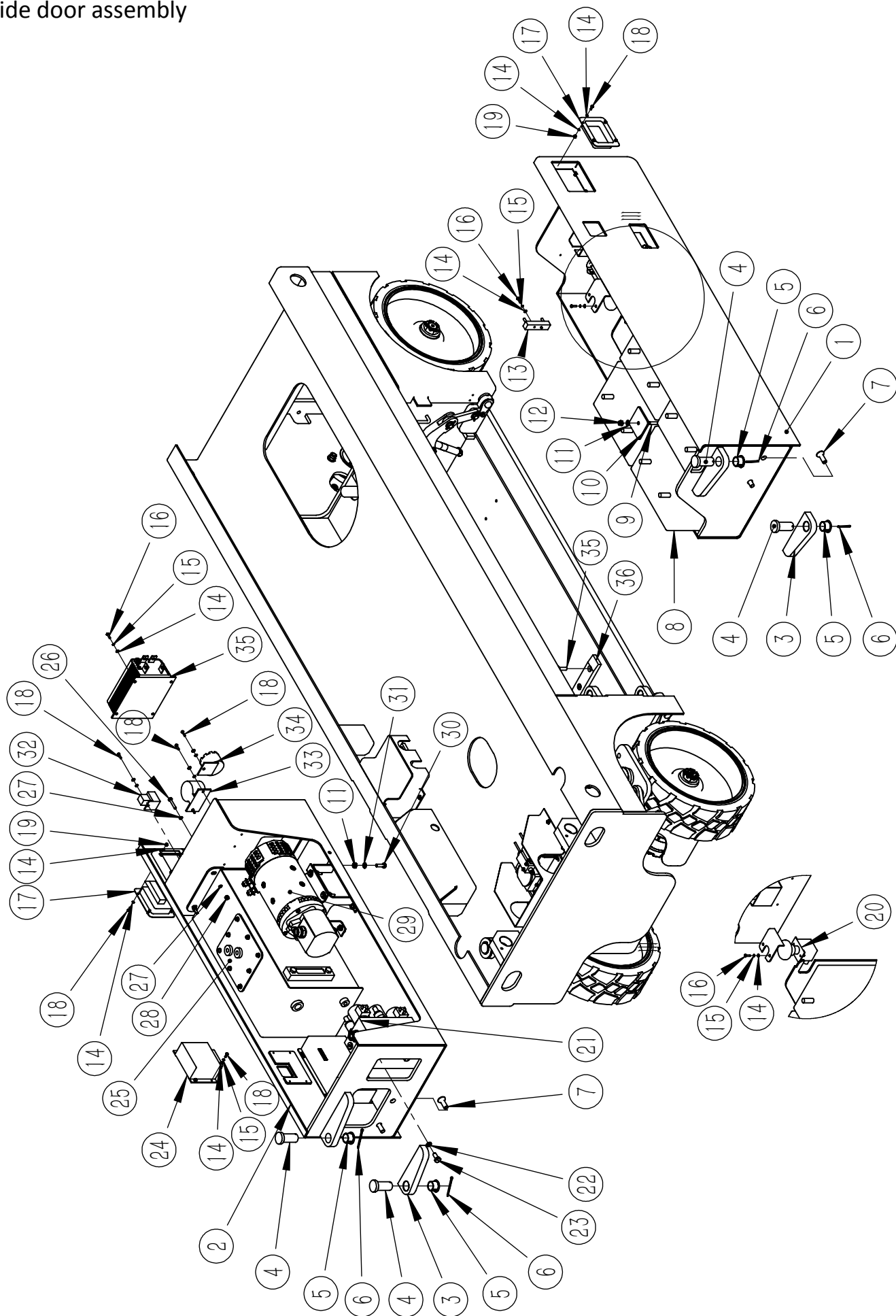
1-2 Pothole guard



1-2 Pothole guard

Pothole guard					
NO.	Figure number	name	Part number	Quantity	Product model
1	78XEN-510300-000	Fixed sleeve		1	80XENS,100XENS
2	CT-232300-G00	Bushing		1	80XENS,100XENS
3	CT-113230-G00	Bushing		1	80XENS,100XENS
4	GB70.3-8×25	bolt		4	80XENS,100XENS
5	GB97.1—8	Gasket		1	80XENS,100XENS
6	GB93-8	Gasket		1	80XENS,100XENS
7	GB5783-8×20	bolt		1	80XENS,100XENS
8	78XEN-510100-000	upright tube		1	80XENS,100XENS
9	78XEN-500001-000	idler wheel		2	80XENS,100XENS
10	CT-102010-G00	Bushing		2	80XENS,100XENS
11	78XEN-010007-000	roller		2	80XENS,100XENS
12	GB894-20	clamp spring		2	80XENS,100XENS
13	140XEN-510500-000	Support bar A		1	80XENS,100XENS
14	140XEN-510600-000	Support bar B		1	80XENS,100XENS
15	CT-220165-G00	Bushing		4	80XENS,100XENS
16	78XEN-010200-000	pin		4	80XENS,100XENS
17	GB861.2-6	Gasket		4	80XENS,100XENS
18	GB5783-6×16	bolt		4	80XENS,100XENS
19	78XEN-510400-000	Connection piece		2	80XENS,100XENS
20	CT-111510-G00	Bushing		4	80XENS,100XENS
21	78XEN-010010-000	shaft		2	80XENS,100XENS
22	GB97.1—16	Gasket		8	80XENS,100XENS
23	GB91-3×25	Cotter pin		8	80XENS,100XENS
24	78XEN-010009-000	shaft		2	80XENS,100XENS
25	GB5783-8×50	bolt		4	80XENS,100XENS
26	GB97.1—8	Gasket		8	80XENS,100XENS
27	GB889.1-8	lock nut		4	80XENS,100XENS
28	78XEN-500003-000	cushion block		2	80XENS,100XENS
29	78XEN-040101-000	spring		2	80XENS,100XENS
30	78XEN-500002-000	spacer		2	80XENS,100XENS
31	78XEN-010008-000	shaft		2	80XENS,100XENS
32	CT-102525-G00	Bushing		2	80XENS,100XENS
33	GB/T 5287-2002	Gasket		2	80XENS,100XENS
34	GB5783-12×90	bolt		2	80XENS,100XENS
35	GB97.1—12	Gasket		2	80XENS,100XENS
36	GB889.1-12	lock nut		2	80XENS,100XENS

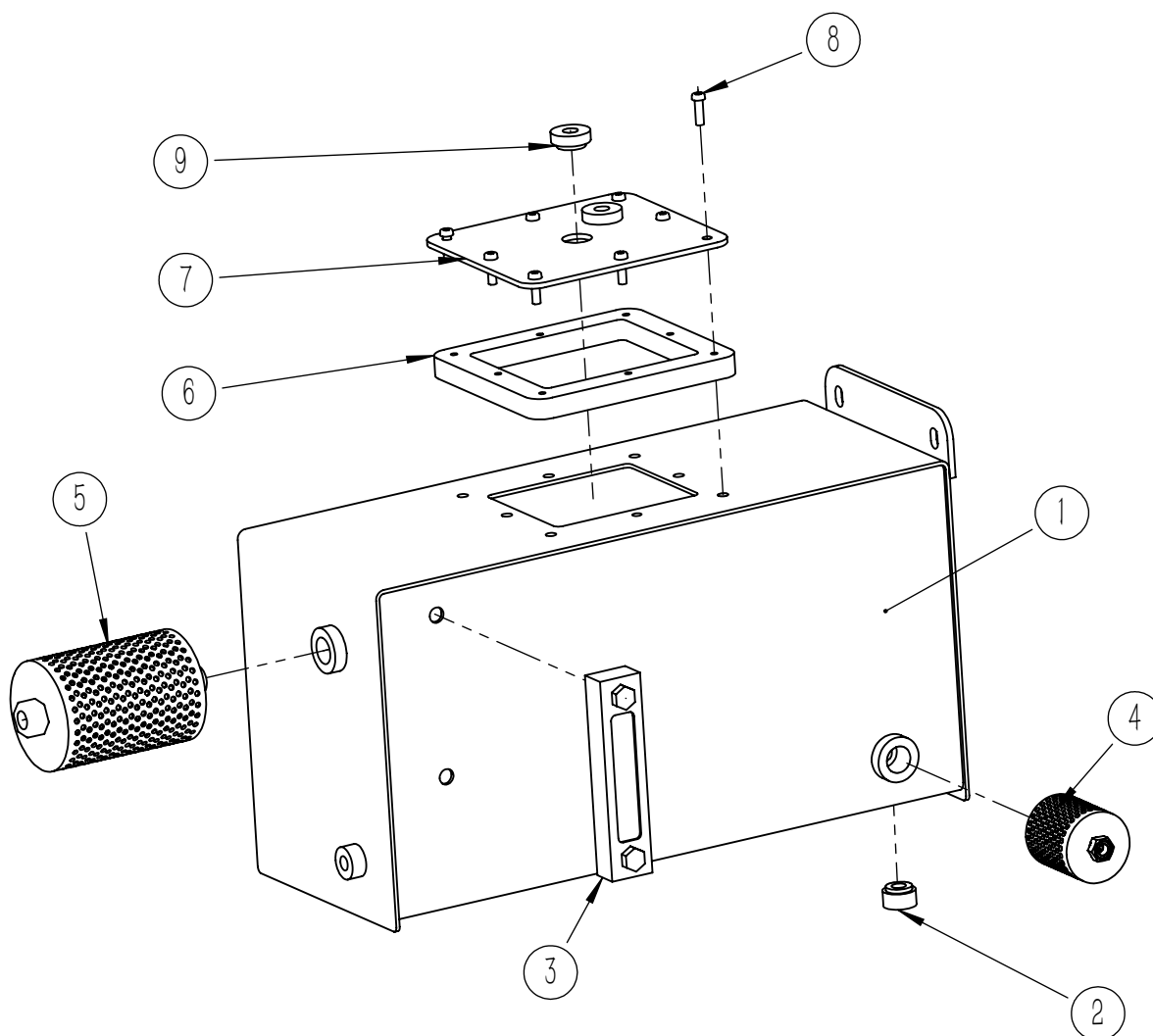
1-3 Side door assembly



1-3 Side door assembly

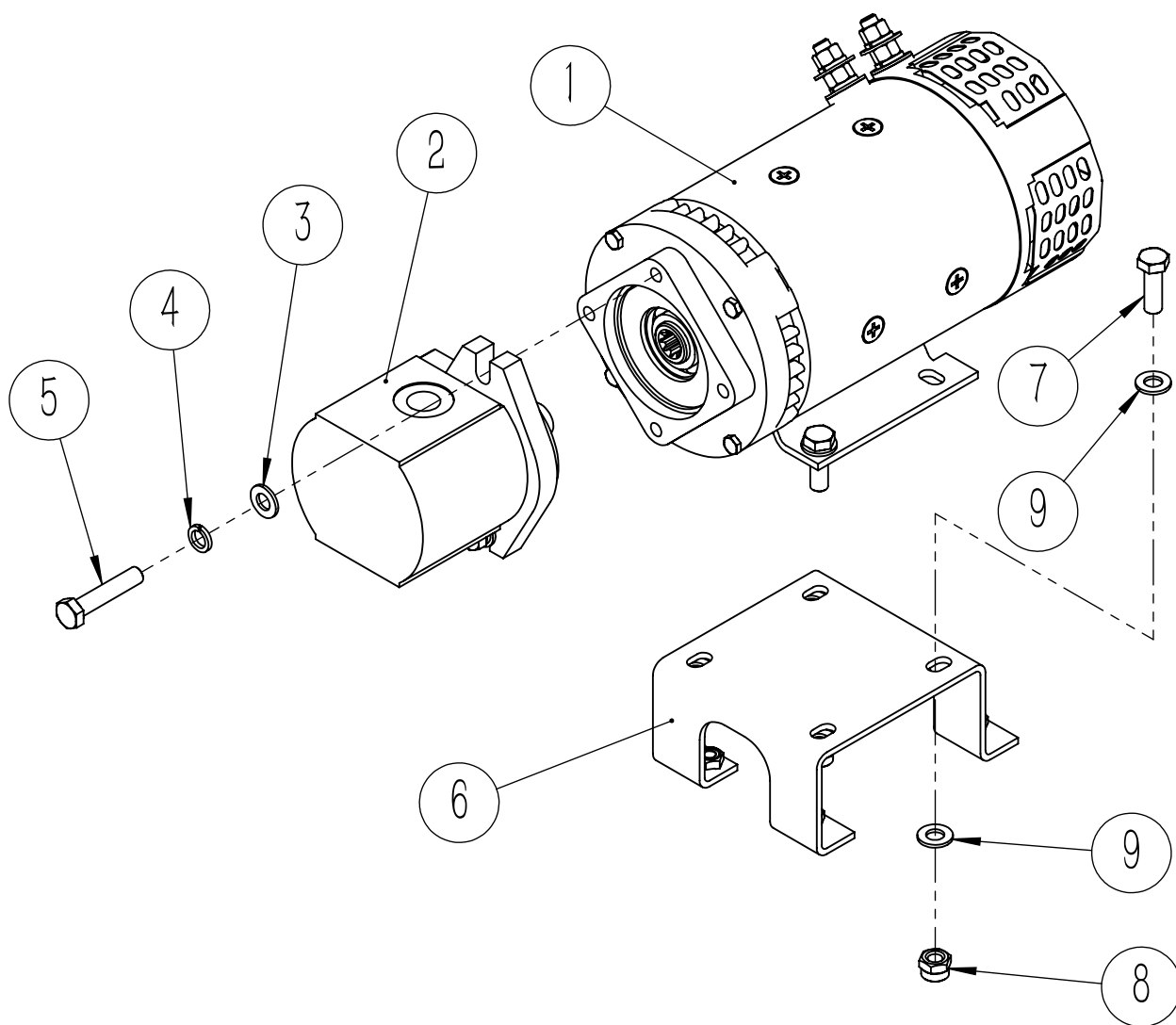
Side door assembly					
NO.	Figure number	name	Part number	Quantity	Product model
1	80XENS-421000-000	battery door		1	80XENS,100XENS
2	140XEN-431000-001	Oil tank door		1	80XENS,100XENS
3	78XEN-421011-001	ear plate		2	80XENS,100XENS
4	78XEN-010004-000	pin		4	80XENS,100XENS
5	CT-225165-G00	Bushing		4	80XENS,100XENS
6	GB91-4×50	Cotter pin		4	80XENS,100XENS
7	GB70.3-12×35	bolt		4	80XENS,100XENS
8	78XEN-760100-G00	Battery(6V)		4	80XENS,100XENS
9	78XEN-420002-000	Battery holder		1	80XENS,100XENS
10	78XEN-420003-000	Battery holder		1	80XENS,100XENS
11	GB97.1—8	Gasket		6	80XENS,100XENS
12	GB889.1-8	lock nut		2	80XENS,100XENS
13	78XEN-740400-G00	fuse		1	80XENS,100XENS
14	GB93-4	Gasket		23	80XENS,100XENS
15	GB97.1—4	Gasket		31	80XENS,100XENS
16	GB818-4x16	cross screw		8	80XENS,100XENS
17	78XEN-040100-G00	Door lock		2	80XENS,100XENS
18	GB5783-4×10	bolt		15	80XENS,100XENS
19	GB889.1-4	lock nut		10	80XENS,100XENS
20	78XEN-740300-G00	Mains switch		1	80XENS,100XENS
21	140XEN-640100-G00	Mainfold		1	80XENS,100XENS
22	GB93-10	Gasket		2	80XENS,100XENS
23	GB5783-10×20	bolt		2	80XENS,100XENS
24	78XEN-740200-G00	ECU		1	80XENS,100XENS
25	80XENS-610000-000	Oil tank		1	80XENS,100XENS
26	GB5783-6×35	bolt		2	80XENS,100XENS
27	GB93-6	Gasket		4	80XENS,100XENS
28	GB889.1-6	lock nut		2	80XENS,100XENS
29		oil pump Motor		1	80XENS,100XENS
30	GB5783-8×25	bolt		4	80XENS,100XENS
31	GB93-8	Gasket		4	80XENS,100XENS
32	78XEN-740900-G00	relay		1	80XENS,100XENS
33	78XEN-741000-G00	horn		1	80XENS,100XENS
34	78XEN-740800-G00	buzzer		1	80XENS,100XENS
35	78XEN-740100-G00	controller		1	80XENS,100XENS
36	78XEN-820004-000	slide block		2	80XENS,100XENS
37	GB70.3-8×25	bolt		4	80XENS,100XENS

1-4 Oil tank assembly



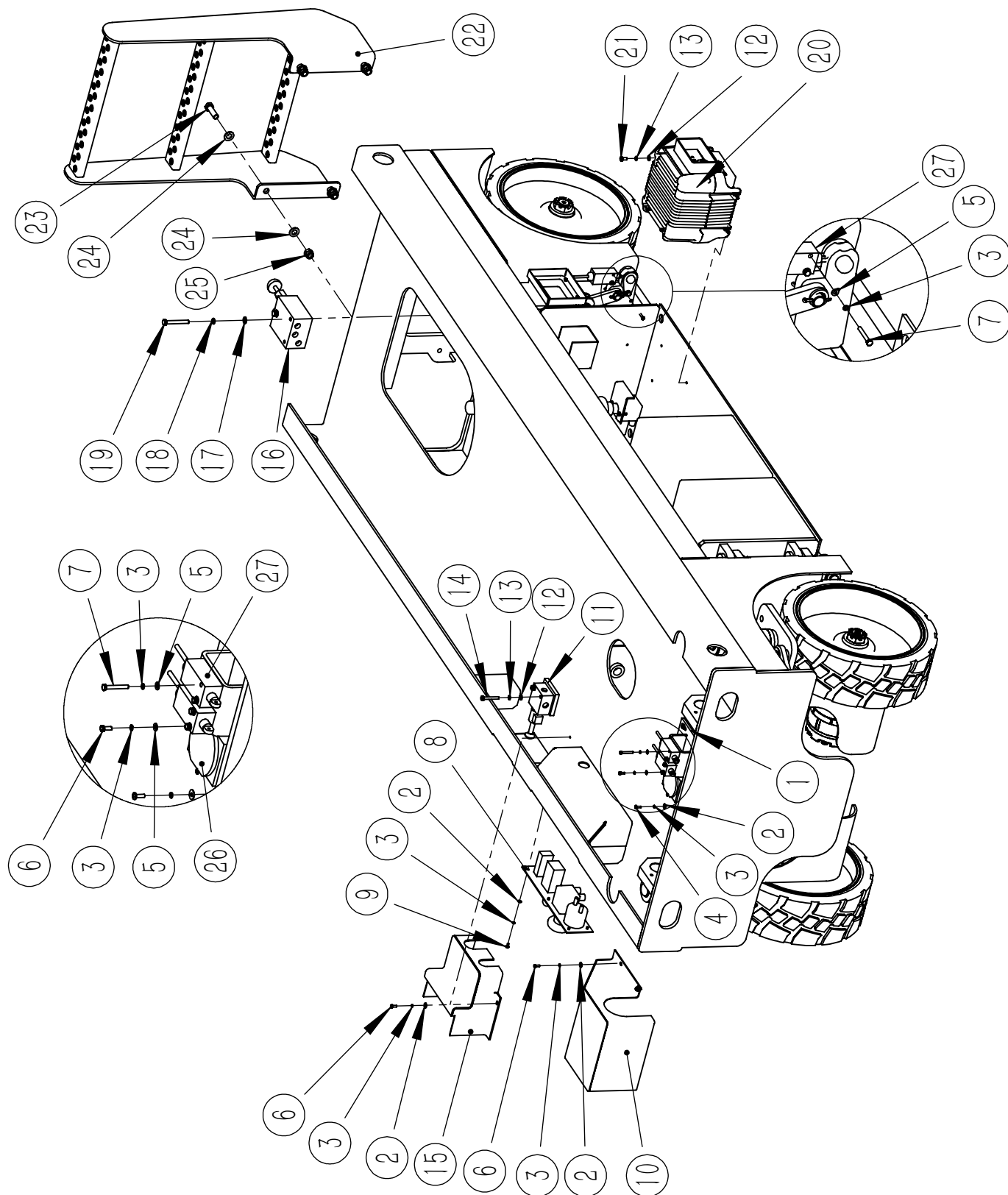
Oil tank assembly					
NO.	Figure number	name	Part number	Quantity	Product model
1	140XEN-610100-000	Oil tank		1	80XENS,100XENS
2	JT-410004-G00	plug		1	80XENS,100XENS
3	78XEN-610303-G00	Level gauge		1	80XENS,100XENS
4	78XEN-610301-G00	Oil filter		1	80XENS,100XENS
5	78XEN-610302-G00	Oil filter		1	80XENS,100XENS
6	78XEN-830001-000	Oil tank gasket		1	80XENS,100XENS
7	78XEN-610200-000	Oil tank cap		1	80XENS,100XENS
8	JB982-77	Combination mat		8	80XENS,100XENS
9	78XEN-610304-G00	respirator		1	80XENS,100XENS

1-5 oil pump Motor assembly



oil pump Motor assembly					
NO.	Figure number	name	Part number	Quantity	Product model
1	78XEN-110100-G00	Motor (3.3kW)		1	80XENS,100XENS
2	78XEN-660100-G00	oil pump		1	80XENS,100XENS
3	GB97.1-10	Gasket		2	80XENS,100XENS
4	GB93-10	Gasket		2	80XENS,100XENS
5	78XEN-020001-000	bolt		2	80XENS,100XENS
6	140XEN-430100-000	Motor mounting plate		1	80XENS,100XENS
7	GB5783-8×25	bolt		4	80XENS,100XENS
8	GB889.1-10	lock nut		4	80XENS,100XENS
9	GB97.1-10	Gasket		8	80XENS,100XENS

1-6 Chassis parts assembly

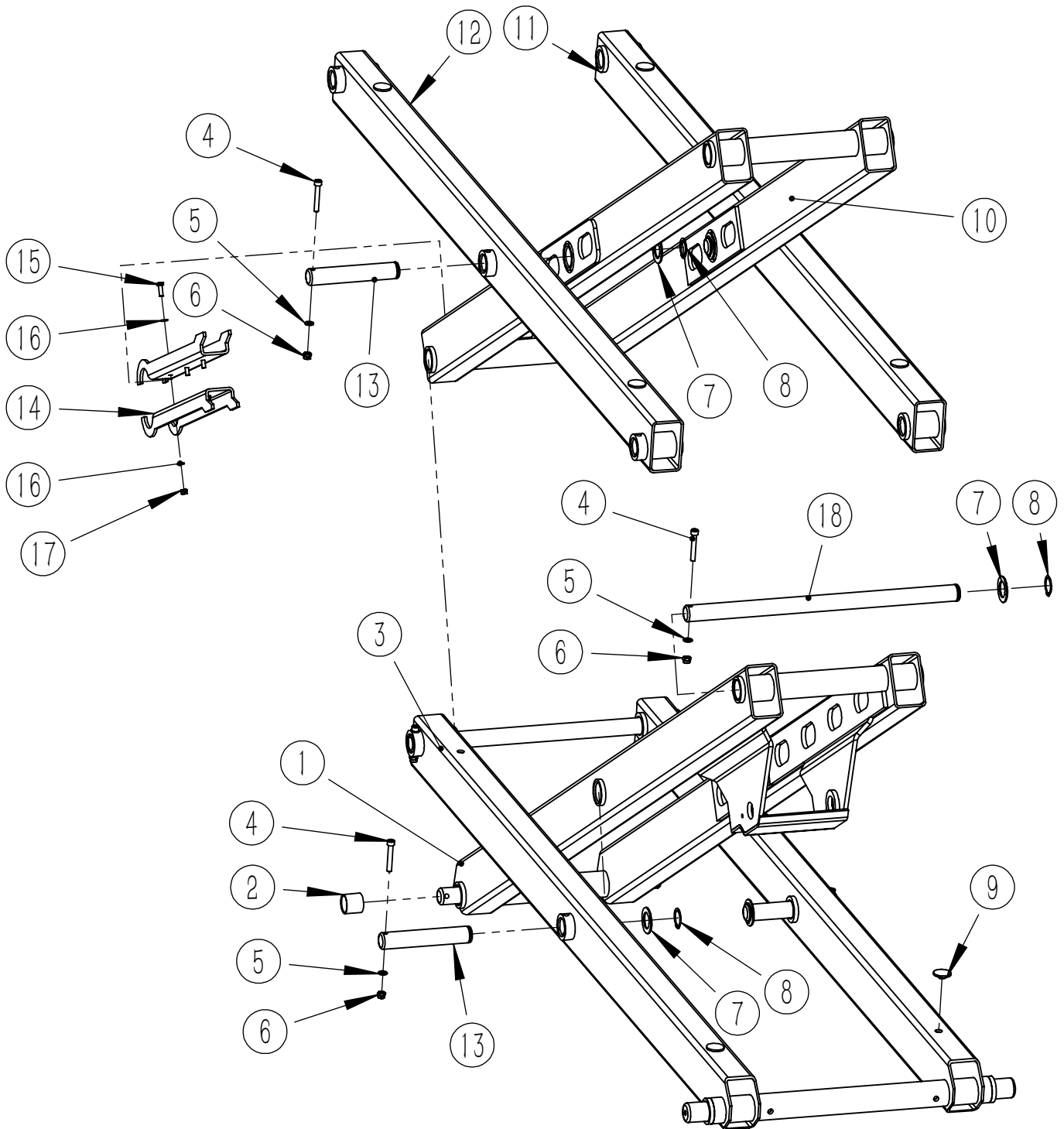


1-6 Chassis parts assembly

Chassis parts assembly					
assembly	assembly	assembly	assembly	assembly	assembly
1	140XEN-400600-001	Height limiting mounting table		1	80XENS,100XENS
2	GB96.1-4	Gasket		4	80XENS,100XENS
3	GB93-4	Gasket		18	80XENS,100XENS
4	GB818-4x12	cross screw		4	80XENS,100XENS
5	GB97.1—4	Gasket		8	80XENS,100XENS
6	GB5783-4×10	bolt		2	80XENS,100XENS
7	GB5783-4×30	bolt		8	80XENS,100XENS
8	78XEN-740500-000	Control panel		1	80XENS,100XENS
9	GB818-4x8	cross screw		6	80XENS,100XENS
10	140XEN-400200-001	Switch cover		1	80XENS,100XENS
11	78XEN-640200-G00	Manual relief valve		1	80XENS,100XENS
12	GB97.1—6	Gasket		6	80XENS,100XENS
13	GB93-6	Gasket		6	80XENS,100XENS
14	GB5783-6×40	bolt		2	80XENS,100XENS
15	80XENS-400400-000	Emergency drop cover		1	80XENS,100XENS
16	78XEN-640300-G00	Manual pump		1	80XENS,100XENS
17	GB97.1—8	Gasket		2	80XENS,100XENS
18	GB93-8	Gasket		2	80XENS,100XENS
19	GB5783-8×70	bolt		2	80XENS,100XENS
20	78XEN-760200-G00	charger		1	80XENS,100XENS
21	GB818-6x10	cross screw		4	80XENS,100XENS
22	78XEN-440000-001	Pedal assembly		1	80XENS,100XENS
23	GB5783-12×40	bolt		4	80XENS,100XENS
24	GB97.1—12	Gasket		8	80XENS,100XENS
25	GB889.1-12	lock nut		4	80XENS,100XENS
26	78XEN-740700-G00	Angle sensor		1	80XENS,100XENS
27	78XEN-740600-G00	limit switch		4	80XENS,100XENS

2 Scissor

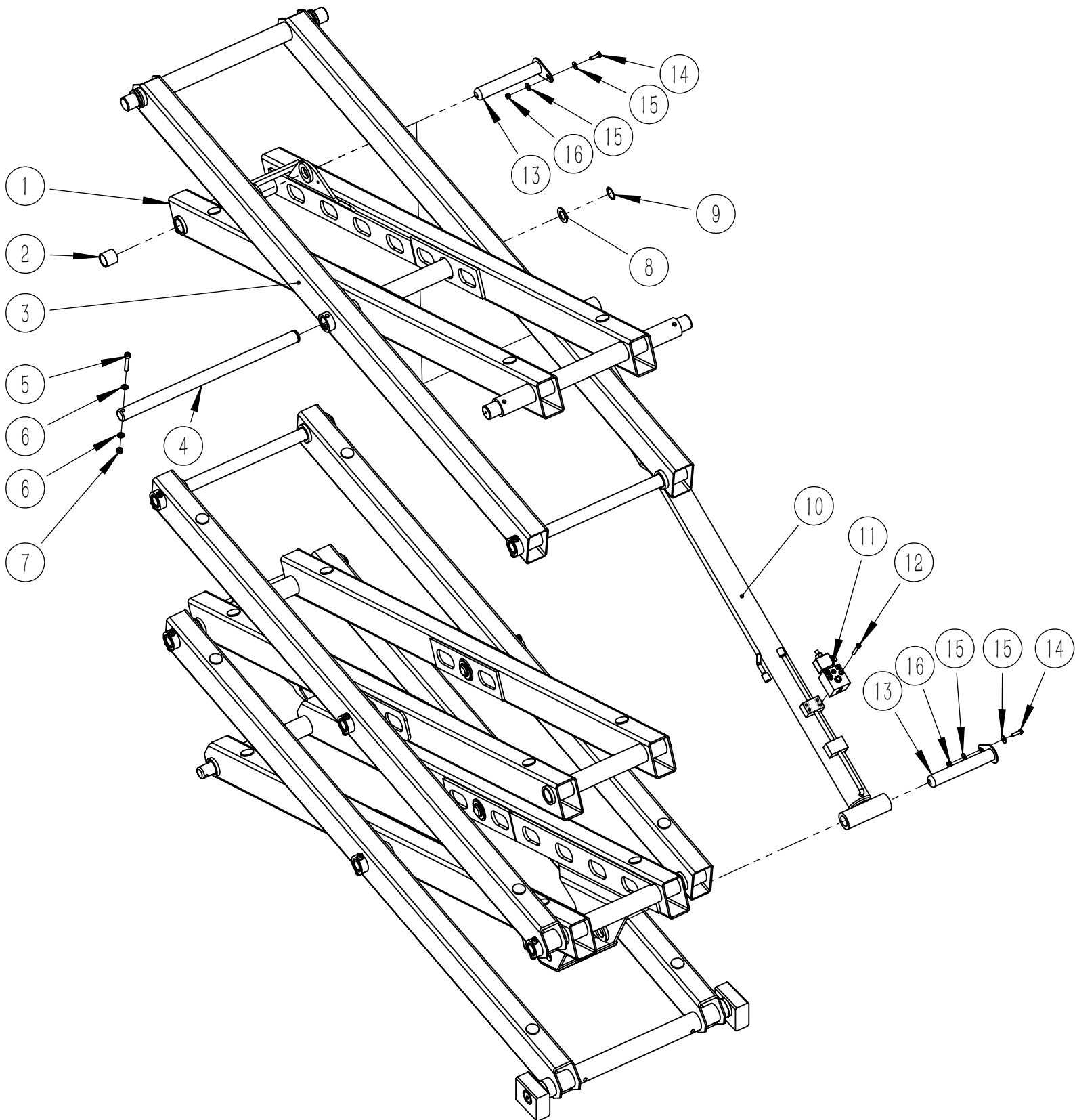
2-1 Part one



2-1 Part one

Part one					
NO.	Figure number	name	Part number	Quantity	Product model
1	80XENS-310100-000	Bottom inner bracket		1	80XENS,100XENS
2	CT-513844-G00	Bushing		12	80XENS,100XENS
3	80XENS-320100-000	The bottom bracket		1	80XENS,100XENS
4	GB70.1-10×65	bolt		5	80XENS,100XENS
5	GB97.1—10	Gasket 10		5	80XENS,100XENS
6	GB889.1-10	lock nut		5	80XENS,100XENS
7	140XEN-300001-000	Thick gasket		5	80XENS,100XENS
8	GB894-38	clamp spring 38		5	80XENS,100XENS
9	78XEN-830002-000	Limit block		16	80XENS,100XENS
10	140XEN-310200-000	Stent B		1	80XENS,100XENS
11	140XEN-320500-000	External stent		1	80XENS,100XENS
12	140XEN-320300-000	External stent		1	80XENS,100XENS
13	140XEN-010002-000	Short pin		4	80XENS,100XENS
14	140XEN-300100-000	Safety arm		2	80XENS,100XENS
15	GB5783-8×25	bolt		3	80XENS,100XENS
16	GB97.1—8	Gasket 8		6	80XENS,100XENS
17	GB889.1-8	lock nut		3	80XENS,100XENS
18	140XEN-010001-000	Long pin shaft		1	80XENS,100XENS

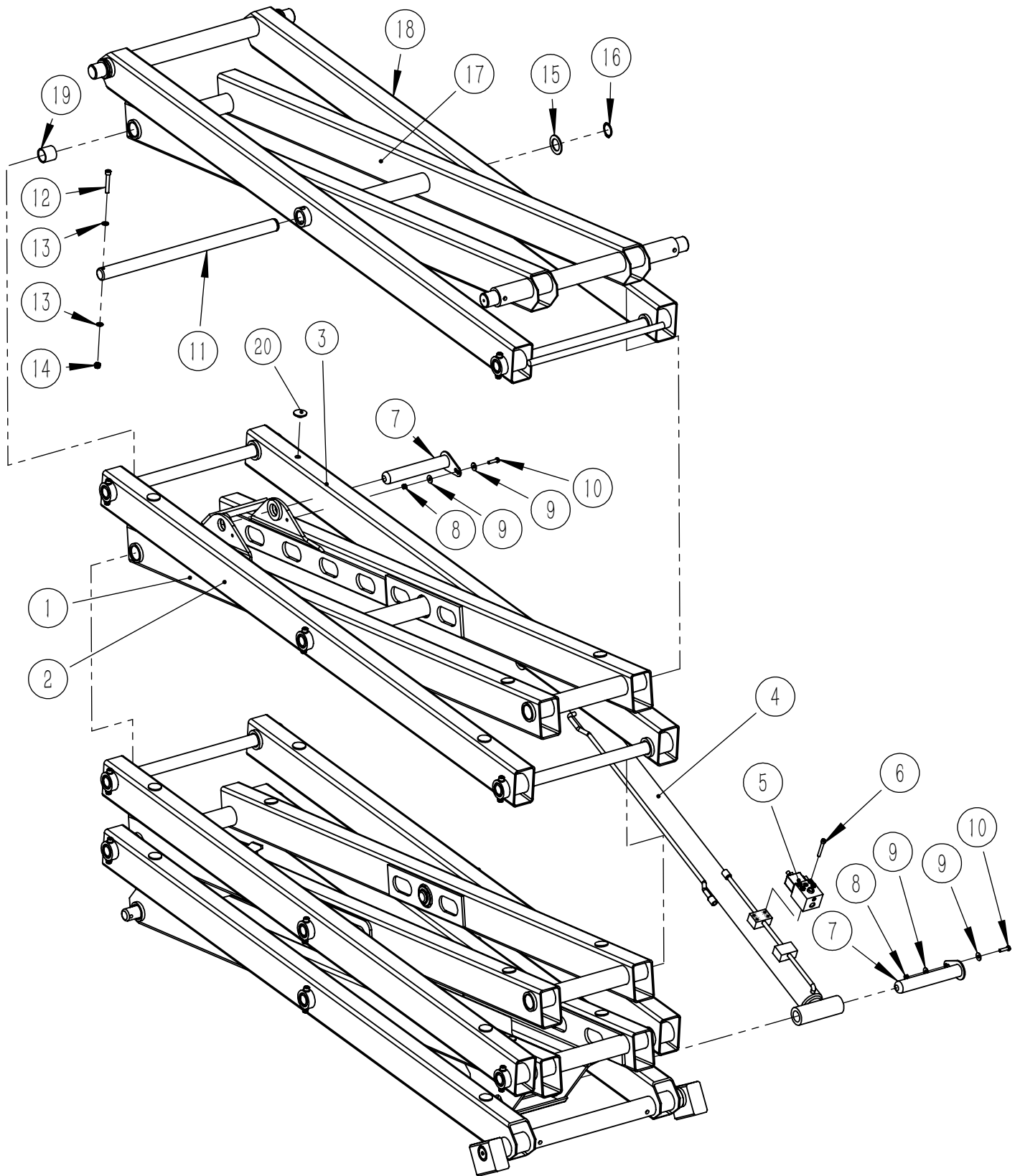
2-2 Part two (80XENS)



2-2 Part two (80XENS)

part two(80XENS)					
NO.	Figure number	name	Part number	Quantity	Product model
1	80XENS-310600-000	Top inner bracket		1	80XENS
2	CT-513844-G00	Bushing		6	80XENS
3	80XENS-320200-000	External stent		1	80XENS
4	140XEN-010001-000	Long pin shaft		3	80XENS
5	GB70.1-10×65	bolt		3	80XENS
6	GB97.1—10	Gasket 10		3	80XENS
7	GB889.1-10	lock nut		3	80XENS
8	140XEN-300001-000	Thick gasket		3	80XENS
9	GB894-38	clamp spring 38		3	80XENS
10	80XENS-620100-000	Lifting cylinder		1	80XENS
11	78XEN-640400-G00	Cylinder valve block		1	80XENS
12	GB70.1-8×60	bolt		4	80XENS
13	80XENS-010100-000	Oil cylinder pin		2	80XENS
14	GB5783-8×30	bolt		2	80XENS
15	GB96.1-8	Gasket		2	80XENS
16	GB889.1-8	lock nut		2	80XENS
17	GB97.1-8	Gasket		2	80XENS

2-3 part two (100XENS)

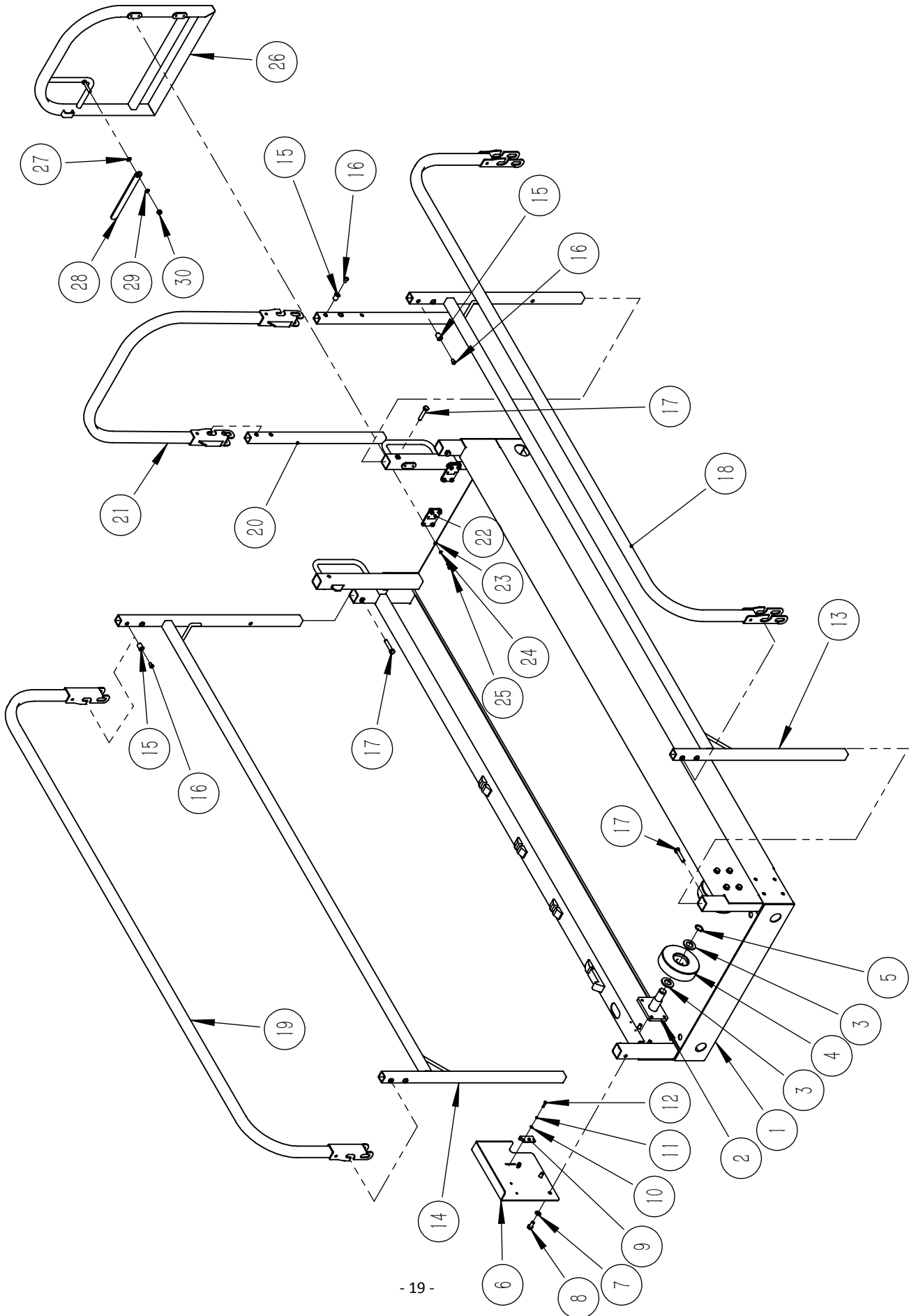


2-3 part two (100XENS)

part two(100XENS)					
NO.	Figure number	name	Part number	Quantity	Product model
1	100XENS-310500-000	Stent E		1	100XENS
2	140XEN-320300-000	External stent		1	100XENS
3	140XEN-320400-000	External stent		1	100XENS
4	80XENS-620100-000	Lifting cylinder		1	100XENS
5	78XEN-640400-G00	Cylinder valve block		1	100XENS
6	GB70.1-8×60	bolt		4	100XENS
7	80XENS-010100-000	Oil cylinder pin		2	100XENS
8	GB889.1-8	lock nut		2	100XENS
9	GB96.1-8	Gasket		2	100XENS
10	GB97.1-8	Gasket 8		2	100XENS
11	GB5783-8×30	bolt		2	100XENS
12	140XEN-010001-000	Long pin shaft		6	100XENS
13	GB70.1-10×65	bolt		6	100XENS
14	GB97.1—10	Gasket 10		6	100XENS
15	GB889.1-10	lock nut		6	100XENS
16	140XEN-300001-000	Thick gasket		6	100XENS
17	GB894-38	clamp spring 38		6	100XENS
18	100XENS-310600-000	Top inner bracket		1	100XENS
19	80XENS-320200-000	External stent		1	100XENS
20	CT-513844-G00	Bushing		6	100XENS
21	78XEN-830002-000	Limit block		8	100XENS

3 platform

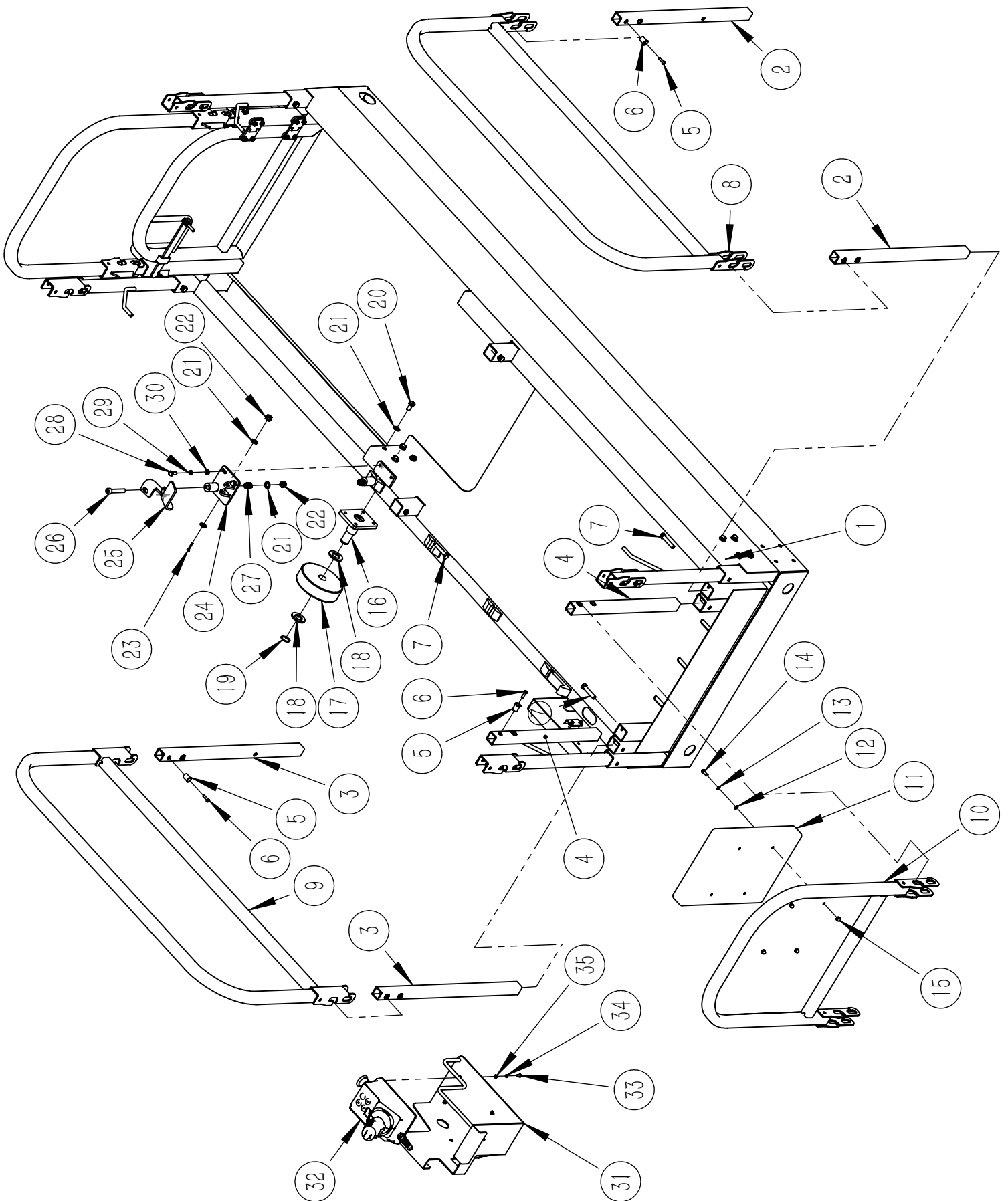
3-1 Fixed platform



3-1 Fixed platform

Fixed platform					
NO.	Figure number	name	Part number	Quantity	Product model
1	80XENS-211000-000	Fixed platform		1	80XENS,100XENS
2	78XEN-235000-000	stent		2	80XENS,100XENS
3	GB97.1—24	Gasket		4	80XENS,100XENS
4	78XEN-820005-000	idler wheel		2	80XENS,100XENS
5	GB894-22	clamp spring		2	80XENS,100XENS
6	78XEN-233000-001	Fixed plate		1	80XENS,100XENS
7	GB97.1—10	Gasket		8	80XENS,100XENS
8	GB5783-10×20	bolt		8	80XENS,100XENS
9	78XEN-200002-000	Fixed plate for handle line		1	80XENS,100XENS
10	GB97.1—5	Gasket		2	80XENS,100XENS
11	GB93-5	Gasket		2	80XENS,100XENS
12	GB5783-5×16	bolt		2	80XENS,100XENS
13	80XENS-212000-000	left guard rail		1	80XENS,100XENS
14	80XENS-213000-000	right guard rail		1	80XENS,100XENS
15	GB17880.2-8	Riveting nut		24	80XENS,100XENS
16	GB70.1-8×12	bolt		24	80XENS,100XENS
17	GB5783-10×50	bolt		6	80XENS,100XENS
18	80XENS-216000-000	left guard rail		1	80XENS,100XENS
19	80XENS-217000-000	right guard rail		1	80XENS,100XENS
20	78XEN-215010-001	Platform stud		2	80XENS,100XENS
21	78XEN-218000-001	guard rail assembly		1	80XENS,100XENS
22	78XEN-040200-G00	Door hinge		2	80XENS,100XENS
23	GB97.1—6	Gasket		8	80XENS,100XENS
24	GB93-6	Gasket		8	80XENS,100XENS
25	GB5783-6×16	bolt		8	80XENS,100XENS
26	78XEN-214000-001	side door		1	80XENS,100XENS
27	78XEN-830003-000	Plastic mat		1	80XENS,100XENS
28	78XEN-200001-001	latch		1	80XENS,100XENS
29	GB97.1—8	Gasket		1	80XENS,100XENS
30	GB889.1-8	lock nut		1	80XENS,100XENS

3-2 Mobile platform

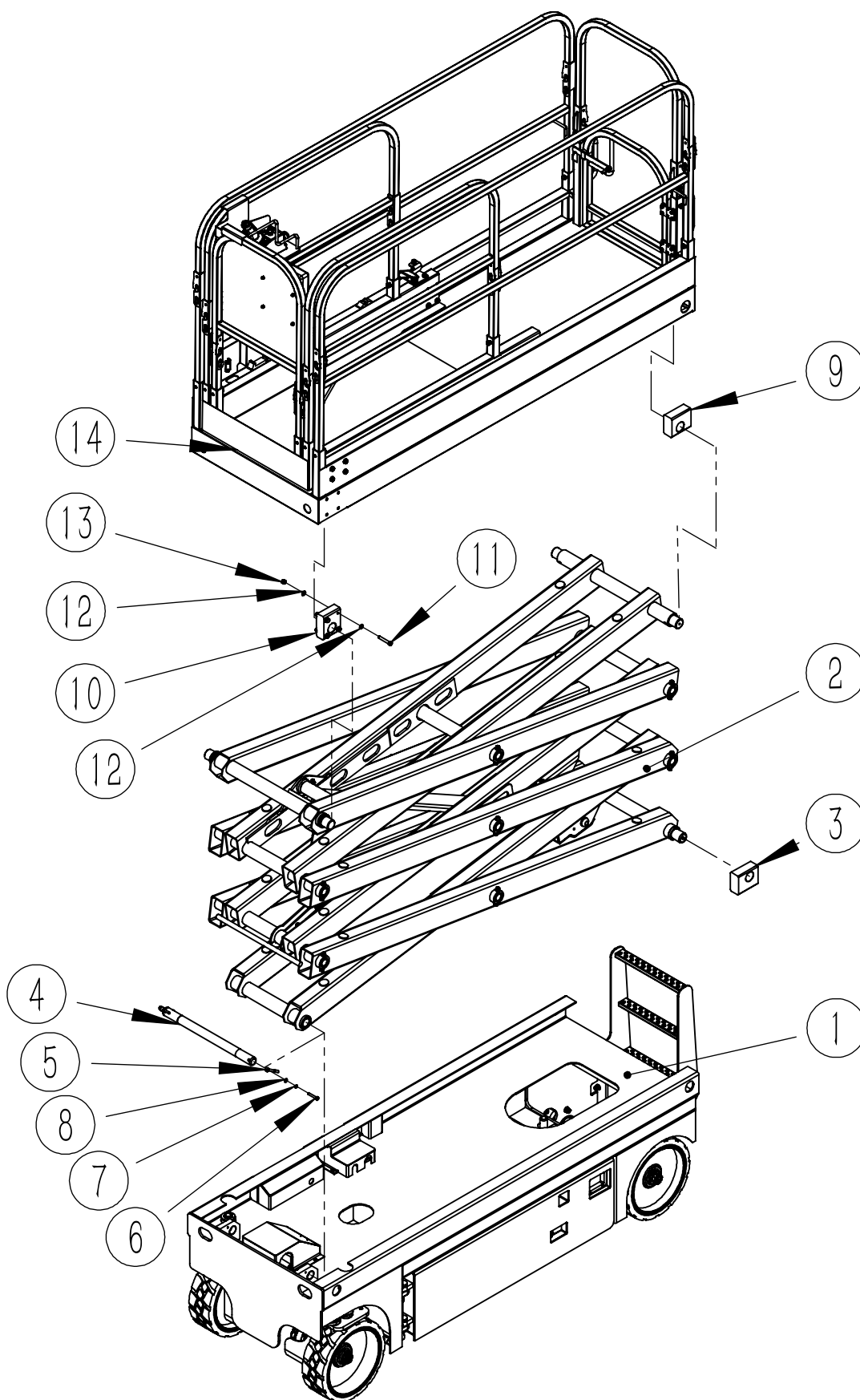


3-2 Mobile platform

Mobile platform					
NO.	Figure number	name	Part number	Quantity	Product model
1	78XEN-221000-001	Mobile platform		1	80XENS,100XENS
2	78XEN-221102-001	Neutral stem		2	80XENS,100XENS
3	78XEN-221103-001	Long stud		2	80XENS,100XENS
4	78XEN-221101-001	Short stud		2	80XENS,100XENS
5	GB17880.2-8	Riveting nut		24	80XENS,100XENS
6	GB70.1-8×12	bolt		24	80XENS,100XENS
7	GB5783-10×50	bolt		6	80XENS,100XENS
8	78XEN-223000-001	left guard rail		1	80XENS,100XENS
9	78XEN-224000-001	right guard rail		1	80XENS,100XENS
10	78XEN-222000-001	guardrail		1	80XENS,100XENS
11	78XEN-820100-000	File box		1	80XENS,100XENS
12	GB97.1—6	Gasket		4	80XENS,100XENS
13	GB93-6	Gasket		4	80XENS,100XENS
14	GB5783-6×16	bolt		4	80XENS,100XENS
15	GB/T 923-6	nut		4	80XENS,100XENS
16	78XEN-235000-000	Roller bracket		2	80XENS,100XENS
17	78XEN-820005-000	idler wheel		2	80XENS,100XENS
18	GB97.1—24	Gasket		4	80XENS,100XENS
19	GB894-24	clamp spring		2	80XENS,100XENS
20	GB5783-10×20	bolt		8	80XENS,100XENS
21	GB97.1—10	Gasket		10	80XENS,100XENS
22	GB889.1-10	lock nut		2	80XENS,100XENS
23	GB5783-10×45	bolt		1	80XENS,100XENS
24	78XEN-231000-000	pedestal		1	80XENS,100XENS
25	78XEN-232000-000	pedal		1	80XENS,100XENS
26	GB70.1-10×65	bolt		1	80XENS,100XENS
27	78XEN-040201-000	spring		1	80XENS,100XENS
28	GB5783-8×20	bolt		2	80XENS,100XENS
29	GB93-8	Gasket		2	80XENS,100XENS
30	GB97.1—8	Gasket		2	80XENS,100XENS
31	78XEN-234000-000	Control handle bracket		1	80XENS,100XENS
32	78XEN-750000-G00	PCU		1	80XENS,100XENS
33	GB818-5x12	cross screw		4	80XENS,100XENS
34	GB93-5	Gasket		4	80XENS,100XENS
35	GB97.1—5	Gasket		4	80XENS,100XENS

4 vehicle assembly

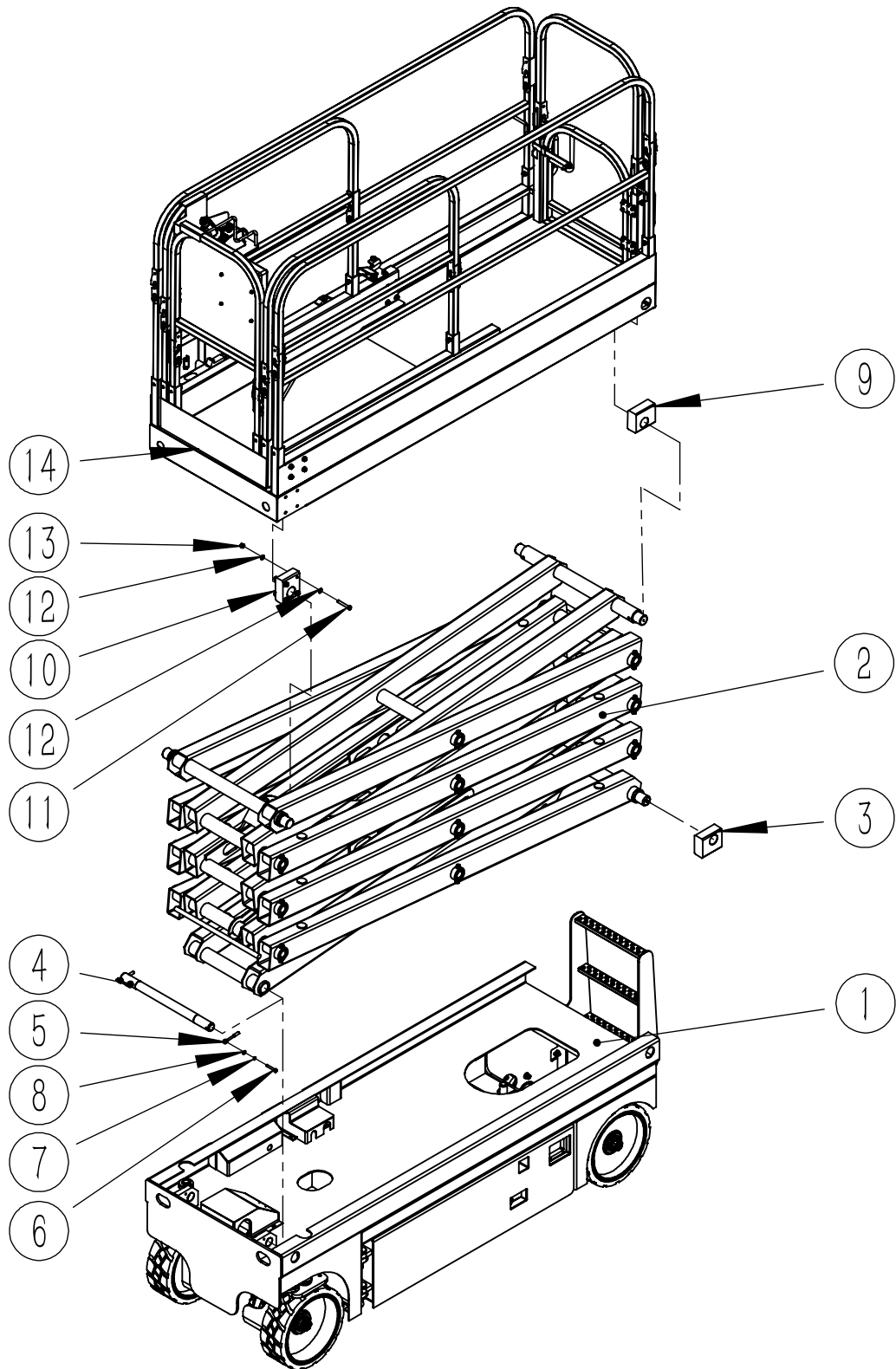
4-1 80XENS vehicle assembly



4-1 80XENS vehicle assembly

80XENS vehicle assembly					
NO.	Figure number	name	Part number	Quantity	Product model
1	80XENS-400000-000	Chassis assembly		1	80XENS,100XENS
2	80XENS-500000-000	Scissor assembly		1	80XENS
3	140XEN-820002-000	slider		2	80XENS,100XENS
4	140XEN-010003-000	pin		1	80XENS,100XENS
5	78XEN-020002-000	bolt		2	80XENS,100XENS
6	GB5783-8×50	bolt		2	80XENS,100XENS
7	GB93-8	Gasket		2	80XENS,100XENS
8	GB97.1—8	Gasket		2	80XENS,100XENS
9	78XEN-820003-000	slider		2	80XENS,100XENS
10	78XEN-820001-000	slider		2	80XENS,100XENS
11	GB5783-10×60	bolt		8	80XENS,100XENS
12	GB97.1—10	Gasket		16	80XENS,100XENS
13	GB889.1-10	lock nut		8	80XENS,100XENS
14	80XENS-200000-000	Platform assembly		1	80XENS,100XENS

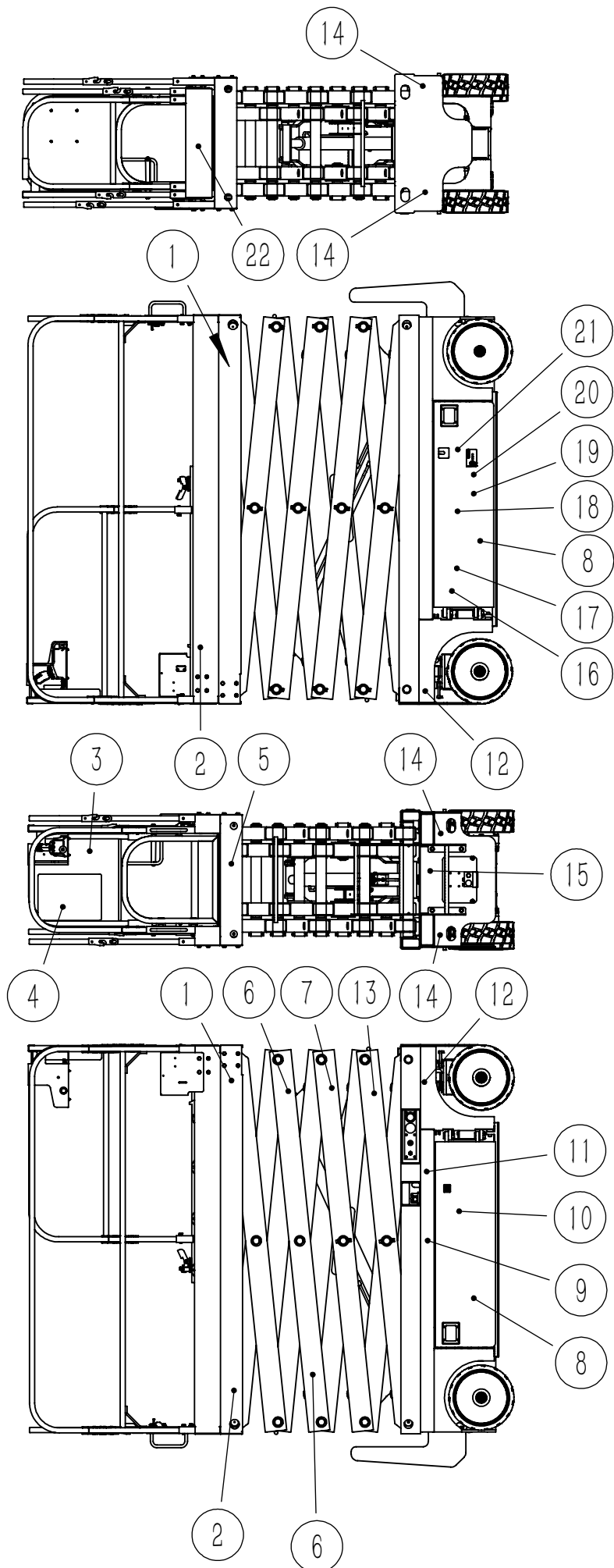
4-2 100XENS vehicle assembly



4-2 100XENS vehicle assembly

100XENS vehicle assembly					
NO.	Figure number	name	Part number	Quantity	Product model
1	80XENS-400000-000	Chassis assembly		1	80XENS,100XENS
2	100XENS-500000-000	Scissor assembly		1	100XENS
3	140XEN-820002-000	slider		2	80XENS,100XENS
4	140XEN-010003-000	pin		1	80XENS,100XENS
5	78XEN-020002-000	bolt		2	80XENS,100XENS
6	GB5783-8×50	bolt		2	80XENS,100XENS
7	GB93-8	Gasket		2	80XENS,100XENS
8	GB97.1—8	Gasket		2	80XENS,100XENS
9	78XEN-820003-000	slider		2	80XENS,100XENS
10	78XEN-820001-000	slider		2	80XENS,100XENS
11	GB5783-10×60	bolt		8	80XENS,100XENS
12	GB97.1—10	Gasket		16	80XENS,100XENS
13	GB889.1-10	lock nut		8	80XENS,100XENS
14	80XENS-200000-000	Platform assembly		1	80XENS,100XENS

4-3 Sticker schematic

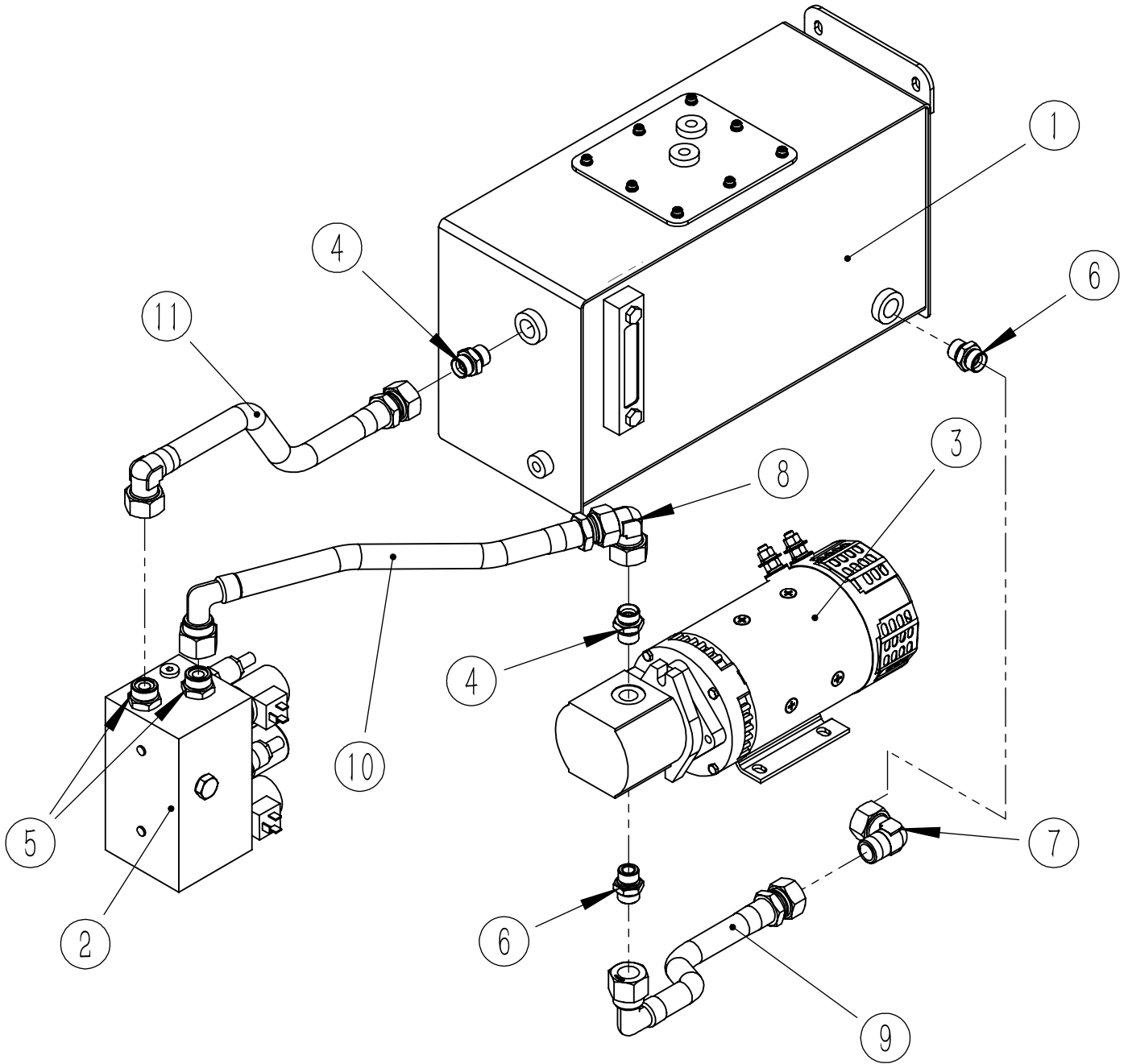


4-3 Sticker schematic

Sticker schematic					
NO.	Figure number	name	Part number	Quantity	Product model
1	80XENS-801000-000 100XENS-801000-000	Stickers		2	80XENS 100XENS
2	78XEN-920017-000	Stickers HANGCHA		2	80XENS,100XENS
3	78XEN-920004-000	Load rating		1	80XENS,100XENS
4	78XEN-920021-000	File box		1	80XENS,100XENS
5	78XEN-920005-000	Load instructions		1	80XENS,100XENS
6	78XEN-920009-000	Article warning		2	80XENS,100XENS
7	78XEN-920008-000	Head guard		1	80XENS,100XENS
8	78XEN-920012-000	prevent the presser foot		2	80XENS,100XENS
9	78XEN-920020-000	Emergency descent schematic		1	80XENS,100XENS
10	78XEN-920010-000	Waterproof tip		1	80XENS,100XENS
11	78XEN-920015-000	Read the instruction before operation		1	80XENS,100XENS
12	78XEN-920007-000	Replace the tires		2	80XENS,100XENS
13	78XEN-920014-000	Maintenance instructions		1	80XENS,100XENS
14	78XEN-920011-000	Lifting point		4	80XENS,100XENS
15	78XEN-920003-000	Walking release instructions		1	80XENS,100XENS
16	78XEN-920013-000	Battery safety warning		1	80XENS,100XENS
17	78XEN-920016-000	Battery replacement requirements		1	80XENS,100XENS
18	78XEN-920002-000	Power failure instructions (English)		1	80XENS,100XENS
19	78XEN-920019-000	Battery maintenance (English)		1	80XENS,100XENS
20	78XEN-920019-001	Battery maintenance (Chinese)		1	80XENS,100XENS
21	78XEN-920002-001	Power failure instructions (Chinese)		1	80XENS,100XENS
22	78XEN-920018-000	stickers HANGCHA		1	80XENS,100XENS

5 Hose assembly

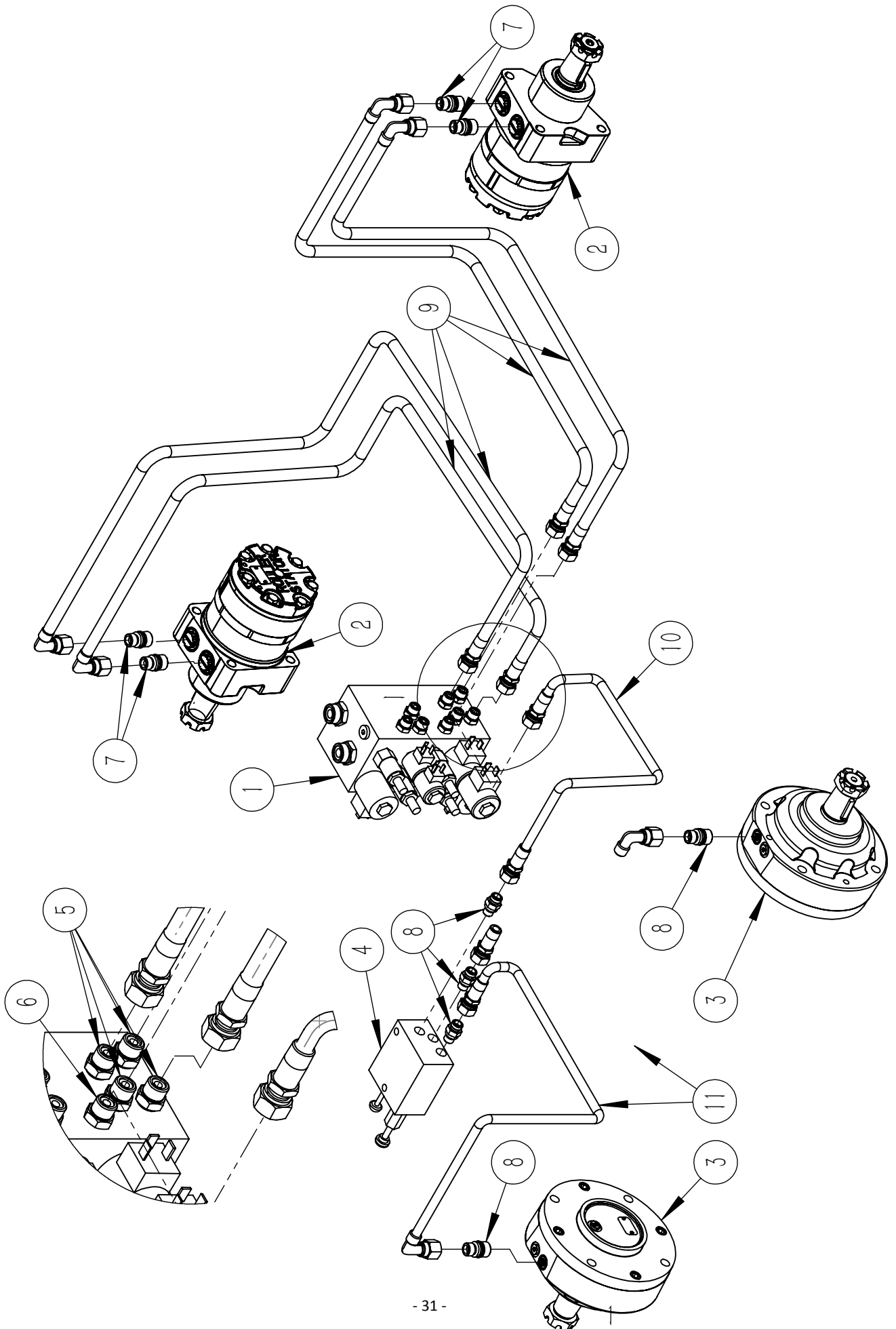
5-1 Diagram of hose connection 1



5-1 Diagram of hose connection 1

Diagram of hose connection1					
NO.	Figure number	name	Part number	Quantity	Product model
1	140XEN-610000-000	Oil tank		1	80XENS,100XENS
2	140XEN-640100-G00	Mainfold		1	80XENS,100XENS
3		oil pump Motor		1	80XENS,100XENS
4	JT-110824-G00	G1/2-M24		2	80XENS,100XENS
5	JT-101824-G00	M18-M24		2	80XENS,100XENS
6	JT-110830-G00	G1/2-M30		2	80XENS,100XENS
7	JT-203030-G00	Joint M30		1	80XENS,100XENS
8	JT-202424-G00	Joint M24		1	80XENS,100XENS
9	140XEN-630001-001	High pressure hose		1	80XENS,100XENS
10	140XEN-630002-001	High pressure hose		1	80XENS,100XENS
11	140XEN-630009-001	High pressure hose		1	80XENS,100XENS

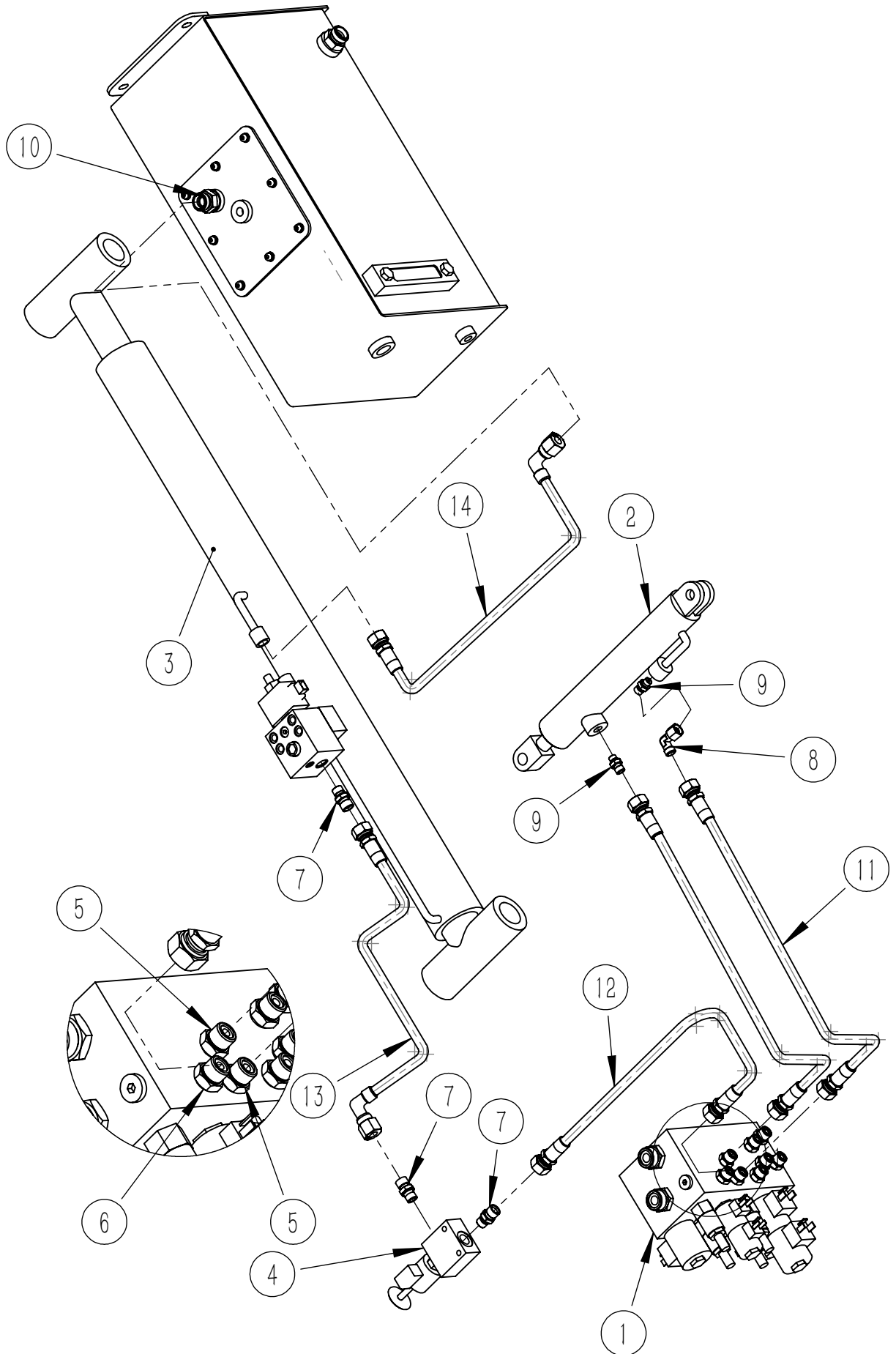
5-2 Diagram of hose connection 2



5-2 Diagram of hose connection 2

Diagram of hose connection2					
NO.	Figure number	name	Part number	Quantity	Product model
1	140XEN-640100-G00	Mainfold		1	80XENS,100XENS
2	80XENS-130100-G00	Hydraulic motor		2	80XENS,100XENS
3	78XEN-120100-G00	brake		2	80XENS,100XENS
4	78XEN-640300-G00	Manual pump		1	80XENS,100XENS
5	JT-101620-G00	Joint M16-M20		4	80XENS,100XENS
6	JT-101416-G00	Joint M14-M16		1	80XENS,100XENS
7	JT-110820-G00	G1/2-M20		4	80XENS,100XENS
8	JT-110716-G00	7/16-M16		5	80XENS,100XENS
9	140XEN-630004-001	High pressure hose		4	80XENS,100XENS
10	140XEN-630006-000	High pressure hose		1	80XENS,100XENS
11	140XEN-630008-001	High pressure hose		2	80XENS,100XENS

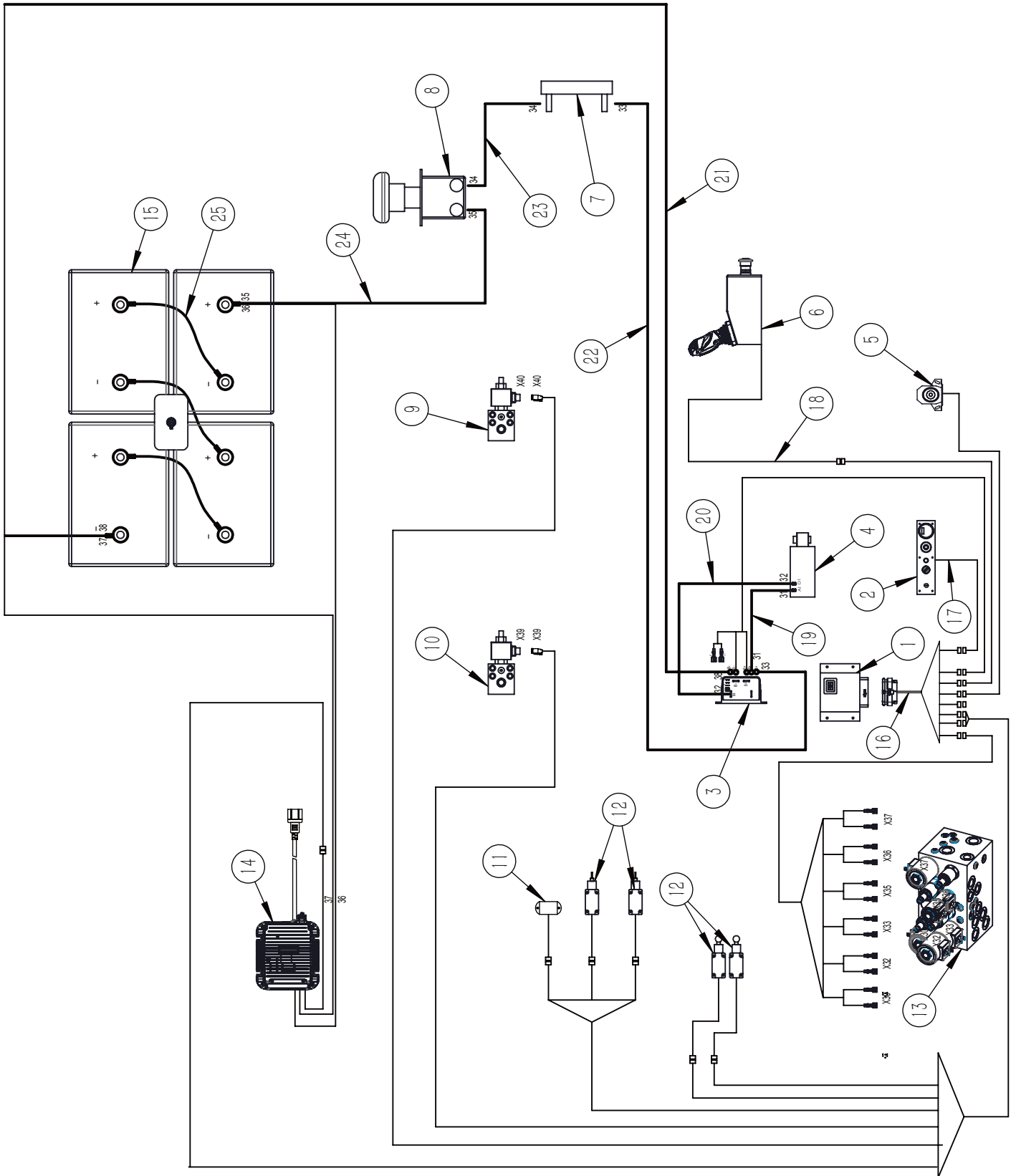
5-3 Diagram of hose connection 3



5-3 Diagram of hose connection 3

Diagram of hose connection3					
NO.	Figure number	name	Part number	Quantity	Product model
1	140XEN-640100-G00	Mainfold		1	80XENS,100XENS
2	78XEN-620200-000	Steering cylinder		1	80XENS,100XENS
3	80XENS-620100-000	Lifting cylinder		1	80XENS,100XENS
4	78XEN-640200-G00	Manual relief valve		1	80XENS,100XENS
5	JT-101416-G00	M14-M16		2	80XENS,100XENS
6	JT-101620-G00	M16-M20		1	80XENS,100XENS
7	JT-110620-G00	G3/8-M20		3	80XENS,100XENS
8	JT-201616-G00	Joint M16		1	80XENS,100XENS
9	JT-110416-G00	G1/4-M16		2	80XENS,100XENS
10	KQ2L 06-02S	Pneumatic fittings		1	80XENS,100XENS
11	140XEN-630005-001	High pressure hose		2	80XENS,100XENS
12	140XEN-630003-001	High pressure hose		1	80XENS,100XENS
13	140XEN-630007-001	High pressure hose		1	80XENS,100XENS
14	80XENS-630011-000	Pneumatic hose		1	80XENS,100XENS

6 Schematic diagram of electrical connection



Schematic diagram of electrical connection					
NO.	Figure number	name	Part number	Quantity	Product model
1	78XEN-740200-G00	ECU		1	80XENS,100XENS
2	78XEN-740500-000	Control panel		1	80XENS,100XENS
3	78XEN-740100-G00	Controller 1204		1	80XENS,100XENS
4	78XEN-110100-G00	electrical machinery (3.3kW)		1	80XENS,100XENS
5	78XEN-740800-G00	buzzer		1	80XENS,100XENS
6	78XEN-750000-G00	PCU		1	80XENS,100XENS
7	78XEN-740400-G00	fuse		1	80XENS,100XENS
8	78XEN-740300-G00	Mains switch		1	80XENS,100XENS
9	78XEN-640400-G00	Cylinder valve block		1	80XENS,100XENS
10	78XEN-640200-G00	Manual relief valve		1	80XENS,100XENS
11	78XEN-740700-G00	Angle sensor		1	80XENS,100XENS
12	78XEN-740600-G00	limit switch		4	80XENS,100XENS
13	140XEN-640100-G00	Mainfold		1	80XENS,100XENS
14	78XEN-760200-G00	charger		1	80XENS,100XENS
15	78XEN-760100-G00	Battery (6 v)		4	80XENS,100XENS
16	80XENS-720000-000	The switch wire harness		1	80XENS,100XENS
17	80XENS-710000-Q00	principal wire bundle		1	80XENS,100XENS
18	80XENS-700100-000 100XEN-700100-000	Tie line		1	80XENS 100XENS
19	140XEN-730400-000	cable		1	80XENS,100XENS
20	140XEN-730500-000	cable		1	80XENS,100XENS
21	80XENS-730300-000	cable		1	80XENS,100XENS
22	140XEN-730600-000	cable		1	80XENS,100XENS
23	140XEN-730200-000	cable		1	80XENS,100XENS
24	140XEN-730100-000	cable		1	80XENS,100XENS
25	78XEN-730700-000	cable		3	80XENS,100XENS