

Parts Catalog

120XEN

Scissor working platform

杭叉集团股份有限公司

HANGCHA GROUP CO., LTD

Contents

Preface.....	- 3 -
1 Chassis	
1-1 Steering system.....	- 5 -
1-2 Pothole guard.....	- 7 -
1-3 Side door assembly.....	- 9 -
1-4 The Oil tank assembly.....	- 11 -
1-5 The oil pump motor.....	- 12 -
1-6 Chassis parts assembly.....	- 13 -
2 Scissor	
2-1 Part one.....	- 15 -
2-2 Part two.....	- 17 -
2-3 Part three.....	- 19 -
3 Platform	
3-1 Fixed platform.....	- 21 -
3-2 Mobile platform.....	- 23 -
4 The vehicle assembly	
4-1 120XEN vehicle assembly.....	- 25 -
4-2 Sticker schematic.....	- 27 -
5 Hose assembly	
5-1 Diagram of hose connection 1.....	- 29 -
5-2 Diagram of hose connection 2.....	- 31 -
5-3 Diagram of hose connection 3.....	- 33 -
6 Schematic diagram of electrical connection.....	- 35 -

Preface

Dear customers, thank you very much for your interest in and choice of the Aerial work platform of HANGCHA GROUP CO.,LTD.

You should pay attention to the following points when using our products:

1. Comply with local laws and regulations;
2. The operation manual contains important information about the products. Please carefully read all contents of the operation manual before use. After you are familiar with and correctly understand the operation instructions of the manual, you can operate in strict accordance with the requirements of the operation manual.

3. Most possible safety hazards and operational precautions are included in the manual. However, due to the complexity and variability of actual working conditions, the manual cannot cover all risks and safety hazards. It is necessary to ensure the absolute safety of operators during the operation to ensure that the operation will not cause damage to the product.

4. The technical parameters, diagrams, forms, etc. contained in the manual are all the latest version when the manual was written. Due to the continuous update of products and technologies, the company reserves the right to update technical parameters and relevant information without prior notice. If the manual is inconsistent with the actual product, please ask our after-sales staff for the latest information.

Before you order accessories, please first confirm the following situation:

1. What kind of car is the part you want to order?
2. Which part or system do you want to order parts from?

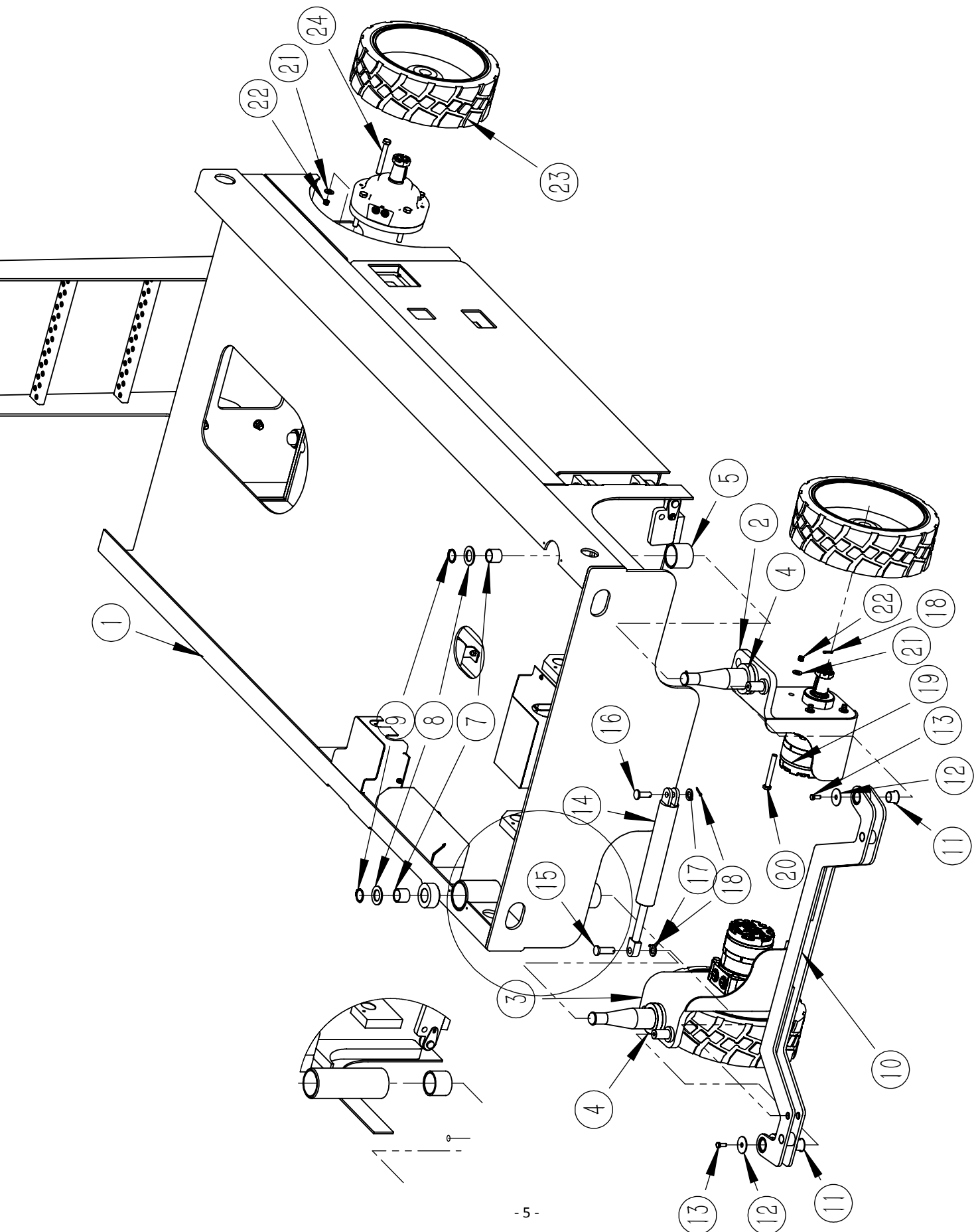
3. After determining which part or system part, the corresponding page number is found in the parts catalogue (table);

4. The serial number of the corresponding part is found on the page number, and the name of the figure number of the part is found in the list of parts.

5. If you want to place an order, you need to tell us the quantity you need in addition to the above information.

1 Chassis

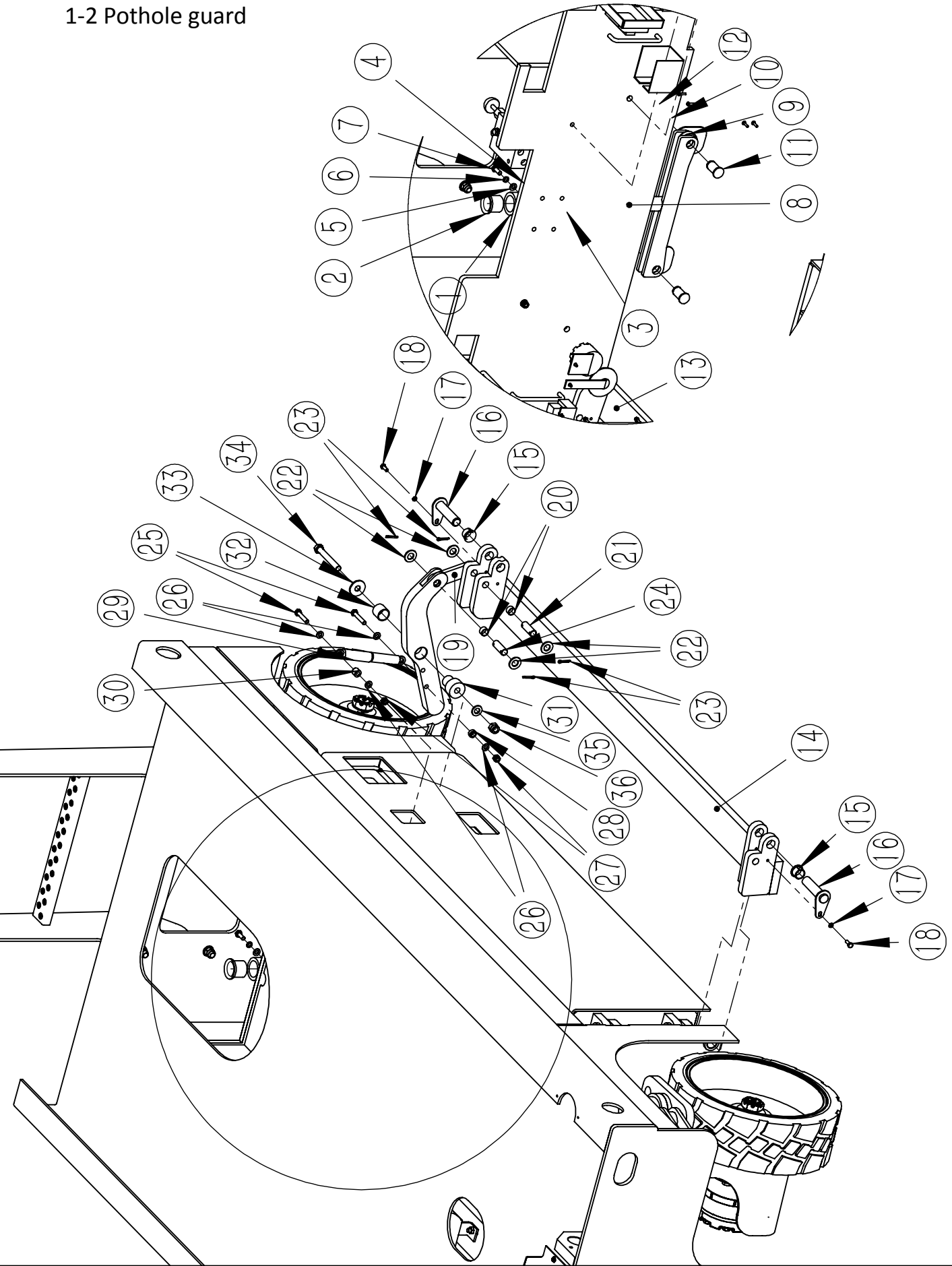
1-1 Steering system



1-1 Steering system

NO.	Figure number	name	Part number	Quantity	Product model
1	140XEN-410000-001	frame		1	120XEN
2	140XEN-450100-001	Left side bracket		1	120XEN
3	140XEN-450200-001	Right side bracket		1	120XEN
4	140XEN-450002-001	Copper bush		2	120XEN
5	CT-525550-G00	Filament wound bushing		2	120XEN
6	140XEN-450008-001	Shaft sleeve		2	120XEN
7	CT-503030-G00	Filament wound bushing		2	120XEN
8	78XEN-300001-000	Thick gasket		2	120XEN
9	GB894-30	clamp spring		2	120XEN
10	140XEN-450300-001	Drag link		1	120XEN
11	CT-225165-G00	bushing		2	120XEN
12	GB96.2—20	gasket		2	120XEN
13	GB894-20	clamp spring		2	120XEN
14	140XEN-620300-000	Steering cylinder		1	120XEN
15	78XEN-010006-000	Cylinder pin shaft		1	120XEN
16	78XEN-010005-000	pin		1	120XEN
17	GB97.1—16	Gasket		2	120XEN
18	GB91-4×50	Cotter pin		6	120XEN
19	140XEN-130100-G00	Hydraulic motor		2	120XEN
20	GB5783-12×90	bolt		8	120XEN
21	GB97.1—12	Gasket		16	120XEN
22	GB889.1-12	lock nut		16	120XEN
23	140XEN-810100-G00	tire		4	120XEN
24	GB5783-12×100	bolt		8	120XEN

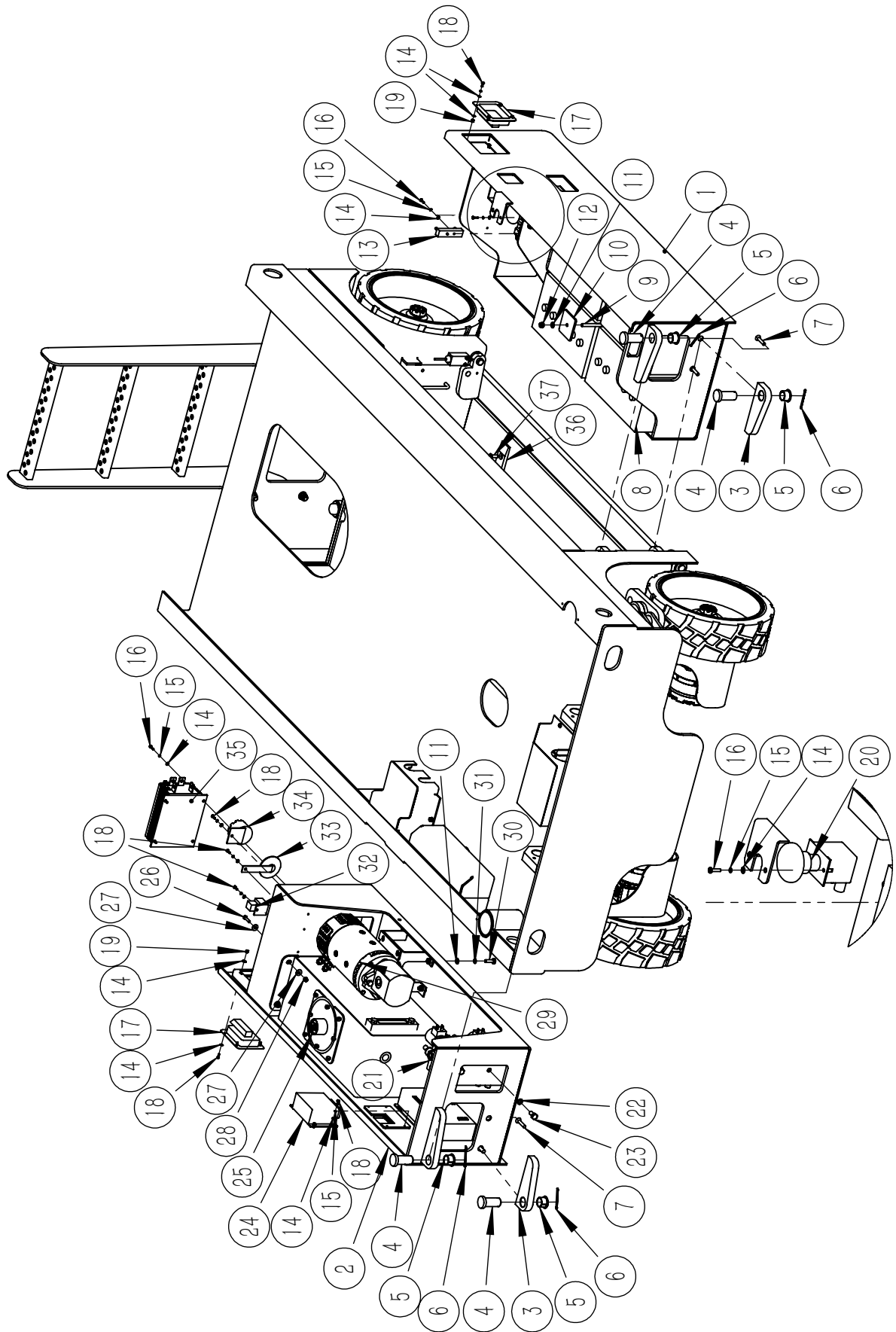
1-2 Pothole guard



1-2 Pothole guard

Pothole guard					
NO.	Figure number	name	Part number	Quantity	Product model
1	78XEN-510300-000	Fixed sleeve		1	120XEN
2	CT-232300-G00	bushing		1	120XEN
3	CT-113230-G00	bushing		1	120XEN
4	GB70.3-8×25	Hexagon socket head screw		4	120XEN
5	GB97.1—8	Gasket		1	120XEN
6	GB93-8	Elastic gasket		1	120XEN
7	GB5783-8×20	bolt		1	120XEN
8	140XEN-510100-000	upright tube		1	120XEN
9	78XEN-500001-000	idler wheel		2	120XEN
10	CT-102010-G00	bushing		2	120XEN
11	78XEN-010007-000	roller		2	120XEN
12	GB894-20	clamp spring		2	120XEN
13	140XEN-510500-000	Support bar A		1	120XEN
14	140XEN-510600-000	Support bar B		1	120XEN
15	CT-220165-G00	bushing		4	120XEN
16	78XEN-010200-000	pin		4	120XEN
17	GB861.2—6	Gasket		4	120XEN
18	GB5783-6×16	bolt		4	120XEN
19	78XEN-510400-000	Connection piece		2	120XEN
20	CT-111510-G00	bushing		4	120XEN
21	78XEN-010010-000	transmission shaft		2	120XEN
22	GB97.1—16	Gasket		8	120XEN
23	GB91-3×25	Cotter pin		8	120XEN
24	78XEN-010009-000	transmission shaft		2	120XEN
25	GB5783-8×50	bolt		4	120XEN
26	GB97.1—8	Gasket		8	120XEN
27	GB889.1-8	lock nut		4	120XEN
28	78XEN-500002-000	spacer		2	120XEN
29	78XEN-040101-000	spring		2	120XEN
30	78XEN-500003-000	Suspension block		2	120XEN
31	78XEN-010008-000	Fixed shaft		2	120XEN
32	CT-102525-G00	bushing		2	120XEN
33	GB/T 5287-2002	gasket		2	120XEN
34	GB5783-12×90	bolt		2	120XEN
35	GB97.1—12	gasket		2	120XEN
36	GB889.1-12	lock nut		2	120XEN

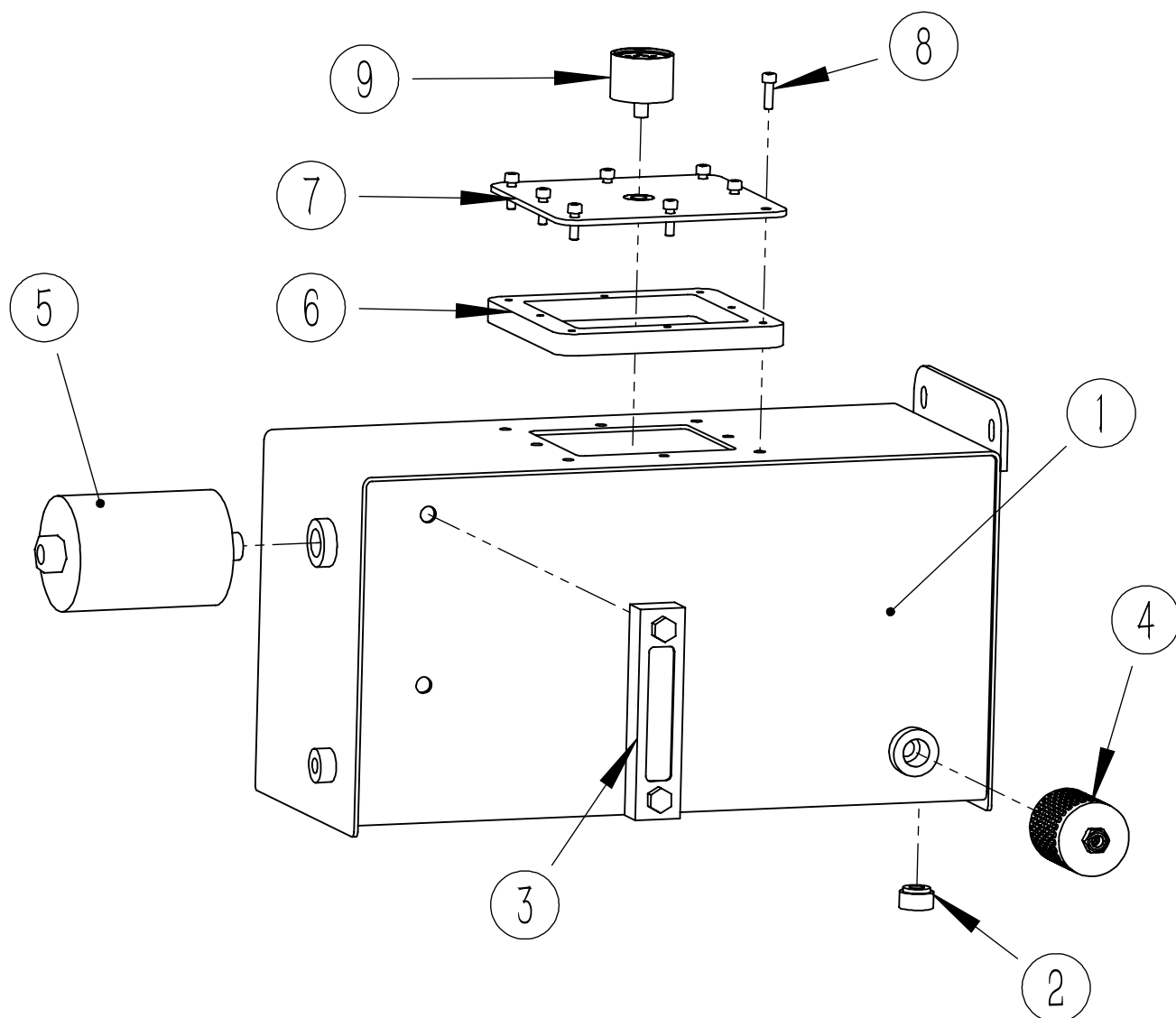
1-3 Side door assembly



1-3 Side door assembly

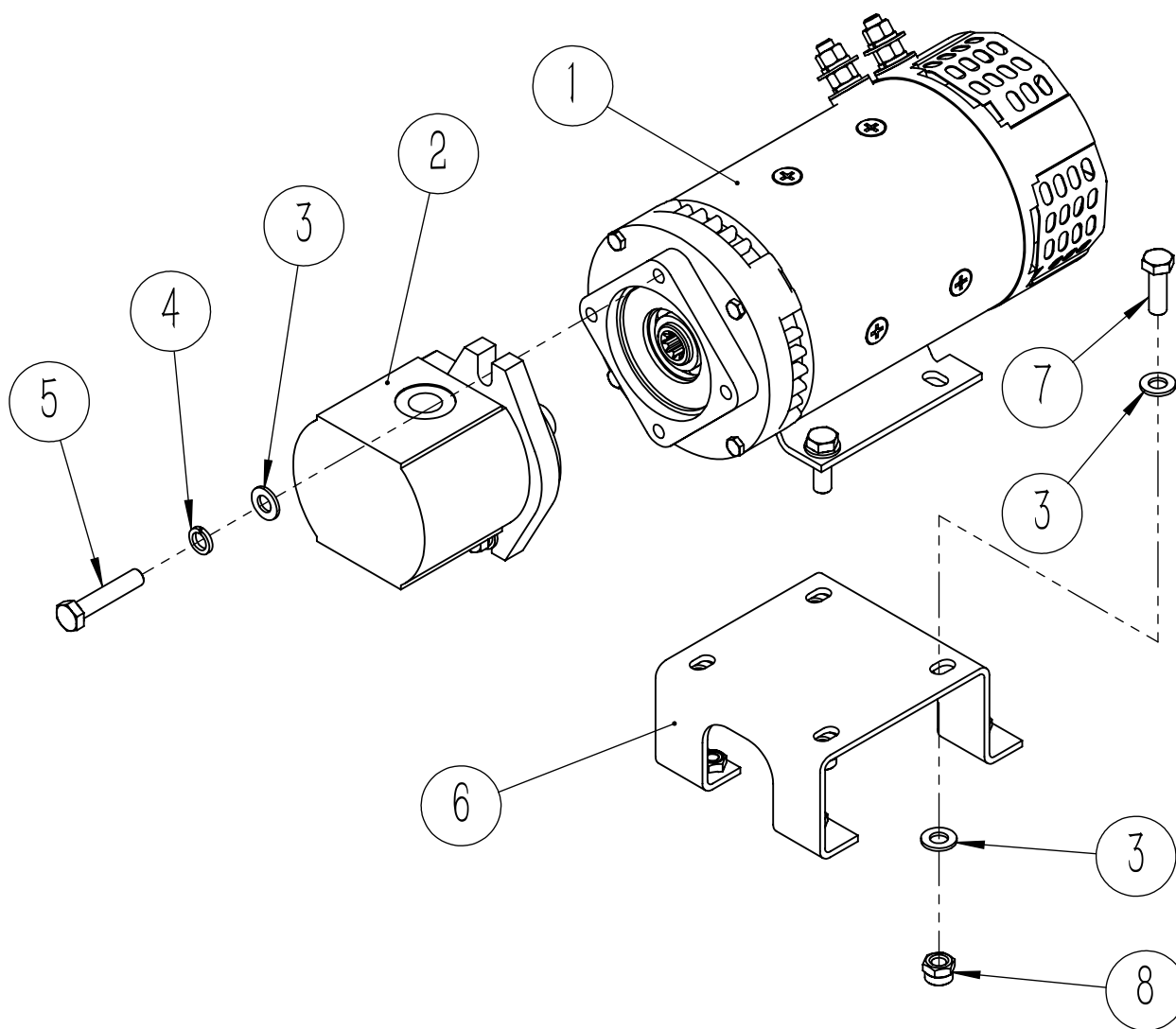
Side door assembly					
NO.	Figure number	name	Part number	Quantity	Product model
1	140XEN-421000-001	battery door		1	120XEN
2	140XEN-431000-001	Oil tank door		1	120XEN
3	78XEN-421011-001	ear plate		4	120XEN
4	78XEN-010004-000	pin		4	120XEN
5	CT-225165-G00	bushing		4	120XEN
6	GB91-4×50	Cotter pin		4	120XEN
7	GB70.3-12×35	bolt		4	120XEN
8	140XEN-760100-G00	Battery(12V)		4	120XEN
9	78XEN-420002-000	Battery holder		1	120XEN
10	78XEN-420003-000	Battery holder		1	120XEN
11	GB97.1—8	gasket		6	120XEN
12	GB889.1-8	lock nut		2	120XEN
13	78XEN-740400-G00	fuse		1	120XEN
14	GB93-4	gasket		23	120XEN
15	GB97.1—4	gasket		31	120XEN
16	GB818-4x16	Cross bolt		8	120XEN
17	78XEN-040100-G00	Door lock		2	120XEN
18	GB5783-4×10	bolt		15	120XEN
19	GB889.1-4	lock nut		10	120XEN
20	78XEN-740300-G00	Mains switch		1	120XEN
21	140XEN-640100-G00	Mainfold		1	120XEN
22	GB93-10	gasket		2	120XEN
23	GB5783-10×20	bolt		2	120XEN
24	78XEN-740200-G00	ECU		1	120XEN
25	140XEN-610000-000	Oil tank		1	120XEN
26	GB5783-6×35	bolt		2	120XEN
27	GB93-6	gasket		4	120XEN
28	GB889.1-6	lock nut		2	120XEN
29		The oil pump motor		1	120XEN
30	GB5783-8×25	bolt		4	120XEN
31	GB93-8	gasket		4	120XEN
32	78XEN-740900-G00	relay		1	120XEN
33	78XEN-741000-G00	horn		1	120XEN
34	78XEN-740800-G00	buzzer		1	120XEN
35	78XEN-740100-G00	controller		1	120XEN
36	78XEN-820004-000	heel block		2	120XEN
37	GB70.3-8×25	Hexagon socket head screw		4	120XEN

1-4 Oil tank assembly



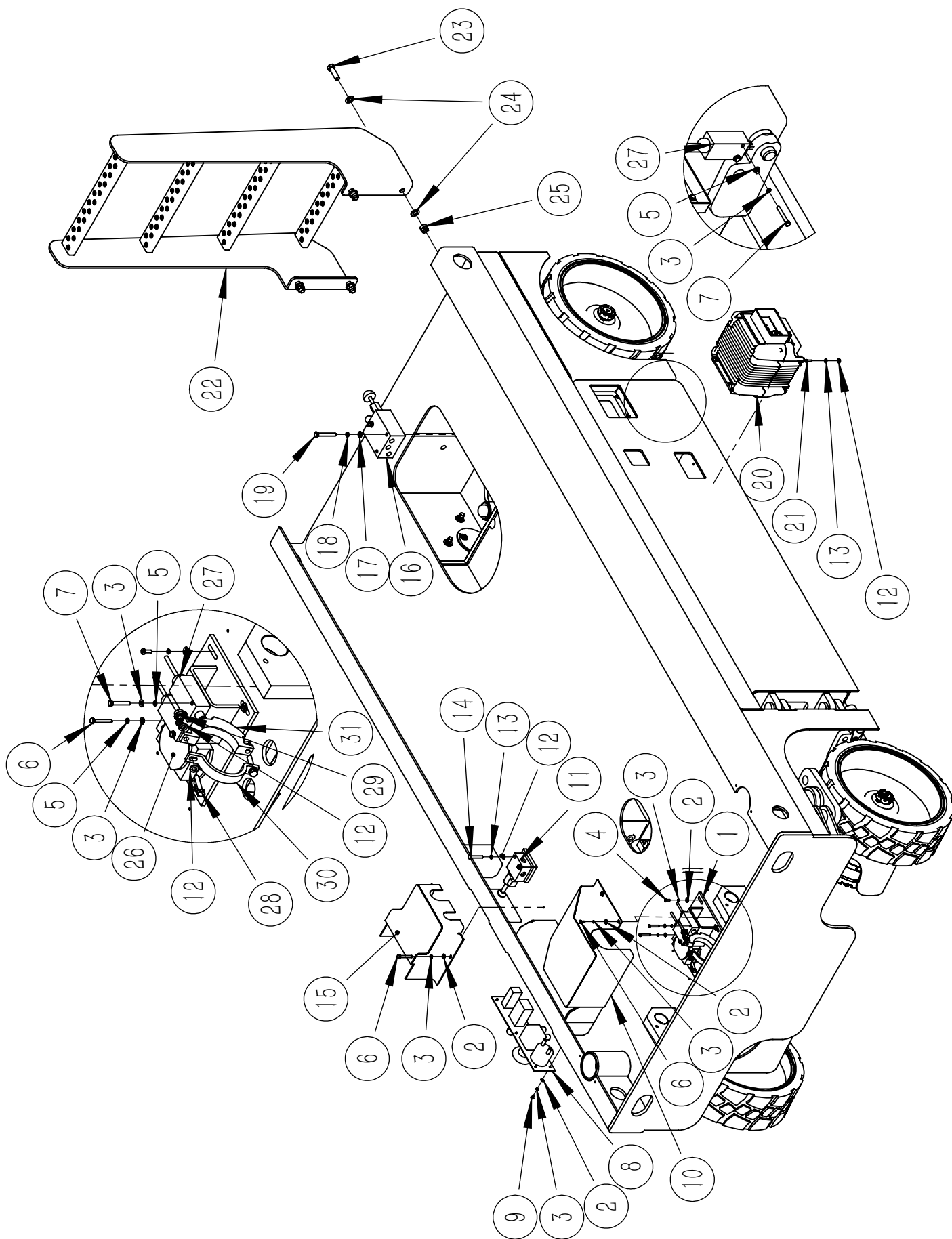
Oil tank assembly					
NO.	Figure number	name	Part number	Quantity	Product model
1	140XEN-610100-000	Oil tank		1	120XEN
2	JT-410004-G00	plug		1	120XEN
3	78XEN-610303-G00	Level gauge		1	120XEN
4	78XEN-610301-G00	Oil filter		1	120XEN
5	78XEN-610302-G00	Oil filter		1	120XEN
6	78XEN-830001-000	Oil tank gasket		1	120XEN
7	78XEN-610200-000	Oil tank cap		1	120XEN
8	JB982-77	Combination mat		8	120XEN
9	78XEN-610304-G00	respirator		1	120XEN

1-5 oil pump Motor assembly



oil pump Motor assembly					
NO.	Figure number	name	Part number	Quantity	Product model
1	78XEN-110100-G00	Motor (3.3kW)		1	120XEN
2	78XEN-660100-G00	oil pump		1	120XEN
3	GB97.1-10	gasket		10	120XEN
4	GB93-10	gasket		2	120XEN
5	78XEN-020001-000	bolt		2	120XEN
6	140XEN-430100-000	Motor mounting plate		1	120XEN
7	GB5783-8×25	bolt		4	120XEN
8	GB889.1-10	lock nut		4	120XEN

1-6 Chassis parts assembly

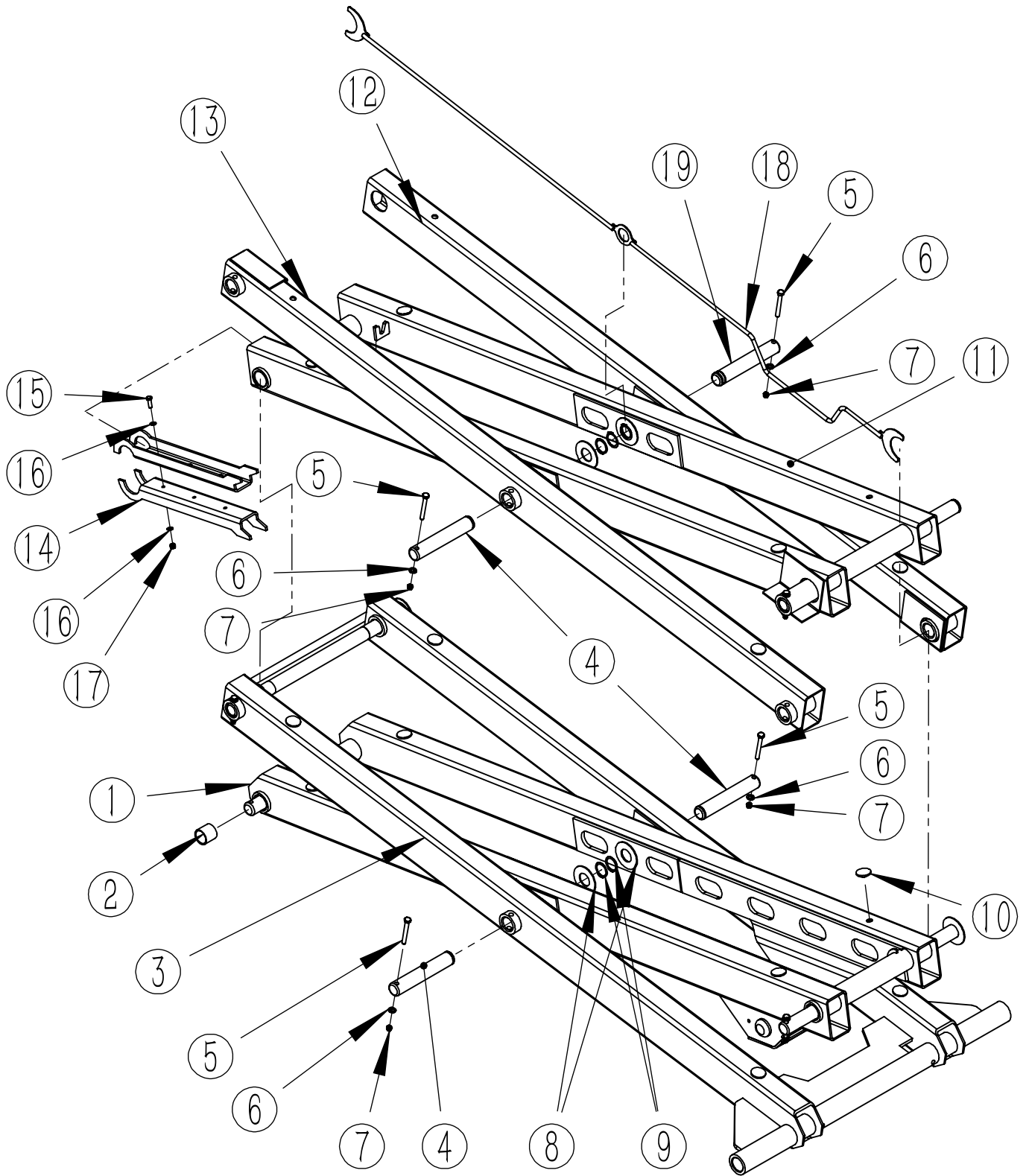


1-6 Chassis parts assembly

Chassis parts assembly					
NO.	Figure number	name	Part number	Quantity	Product model
1	140XEN-400600-001	Height limiting mounting table		1	120XEN
2	GB96.1-4	Gasket		4	120XEN
3	GB93-4	Gasket		18	120XEN
4	GB818-4x12	cross screw		4	120XEN
5	GB97.1—4	Gasket		8	120XEN
6	GB5783-4×10	bolt		2	120XEN
7	GB5783-4×30	bolt		8	120XEN
8	78XEN-740500-000	Control panel		1	120XEN
9	GB818-4x8	cross screw		6	120XEN
10	140XEN-400200-001	Switch cover		1	120XEN
11	78XEN-640200-G00	Manual relief valve		1	120XEN
12	GB97.1—6	Gasket		8	120XEN
13	GB93-6	Gasket		6	120XEN
14	GB5783-6×40	bolt		2	120XEN
15	140XEN-400400-001	Emergency drop cover		1	120XEN
16	78XEN-640300-G00	Manual pump		1	120XEN
17	GB97.1—8	Gasket		6	120XEN
18	GB93-8	Gasket		6	120XEN
19	GB5783-8×70	bolt		2	120XEN
20	78XEN-760200-G00	charger		1	120XEN
21	GB818-6x10	cross screw		4	120XEN
22	140XEN-440000-001	Pedal assembly		1	120XEN
23	GB5783-12×40	bolt		4	120XEN
24	GB97.1—12	Gasket		8	120XEN
25	GB889.1-12	lock nut		4	120XEN
26	78XEN-740700-G00	Angle sensor		1	120XEN
27	78XEN-740600-G00	limit switch		4	120XEN
28	GB5783-6×30	bolt		4	120XEN
29	GB889.1-6	lock nut		4	120XEN
30	140XEN-400002-000	CAM holder		2	120XEN
31	140XEN-400001-000	CAM		2	120XEN

2 Scissor

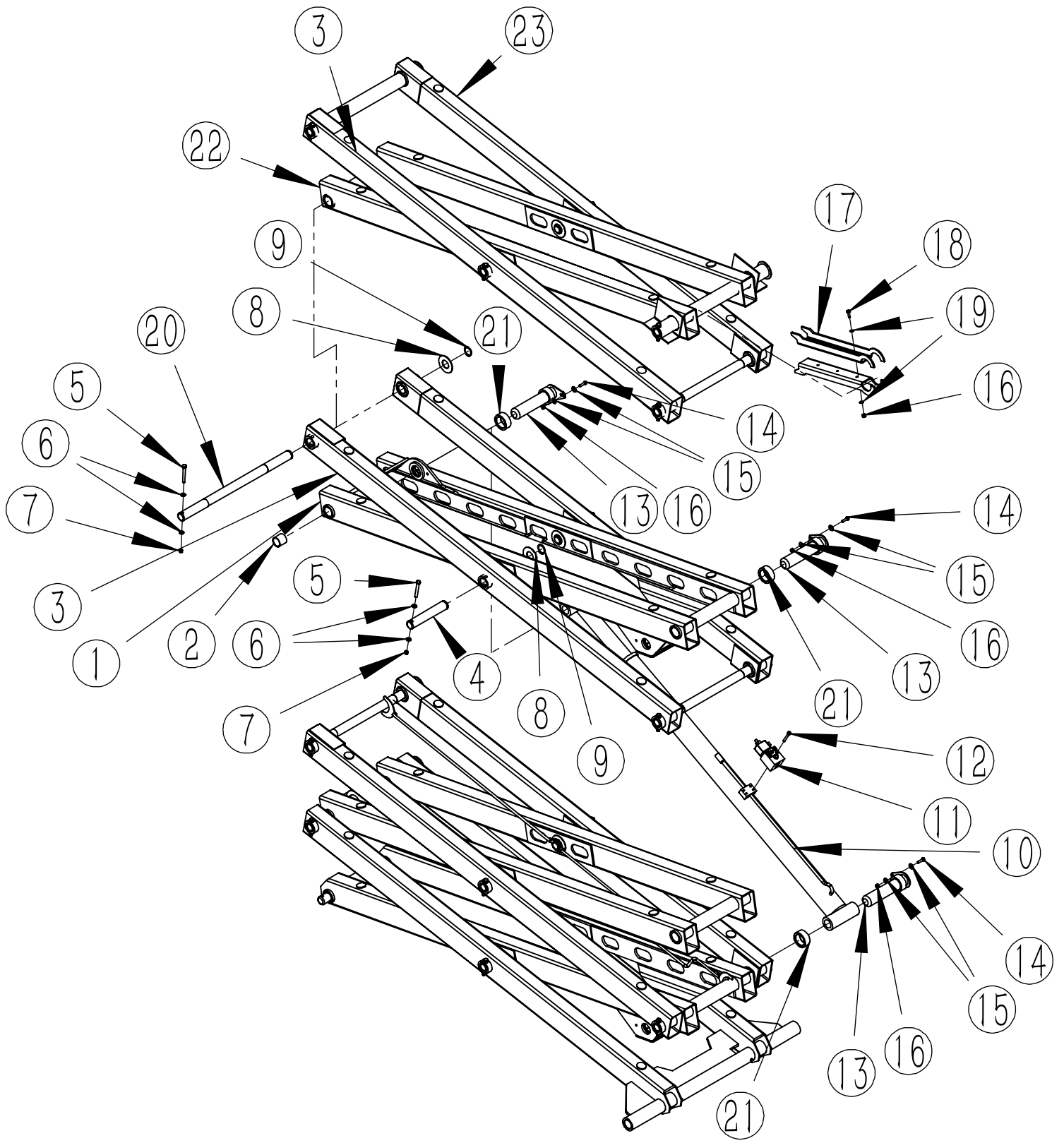
2-1 Part one



2-1 Part one

Part one					
NO.	Figure number	name	Part number	Quantity	Product model
1	140XEN-310100-000	Stent		1	120XEN
2	CT-513844-G00	Bushing		12	120XEN
3	140XEN-320100-000	The bottom bracket		1	120XEN
4	140XEN-010002-000	Short pin		4	120XEN
5	GB70.1-10×80	bolt		5	120XEN
6	GB97.1—10	gasket		5	120XEN
7	GB889.1-10	lock nut		5	120XEN
8	140XEN-300001-000	Thick gasket		6	120XEN
9	GB894-38	clamp spring		6	120XEN
10	78XEN-830002-000	Limit block		16	120XEN
11	140XEN-310200-000	Stent B		1	120XEN
12	140XEN-320300-000	External stent		1	120XEN
13	140XEN-320200-000	External stent		1	120XEN
14	140XEN-300100-000	Safety arm		2	120XEN
15	GB5783-8×25	bolt		3	120XEN
16	GB97.1—8	Gasket		6	120XEN
17	GB889.1-8	lock nut		3	120XEN
18	140XEN-300200-000	routing		1	120XEN
19	140XEN-010005-000	Short pin		1	120XEN

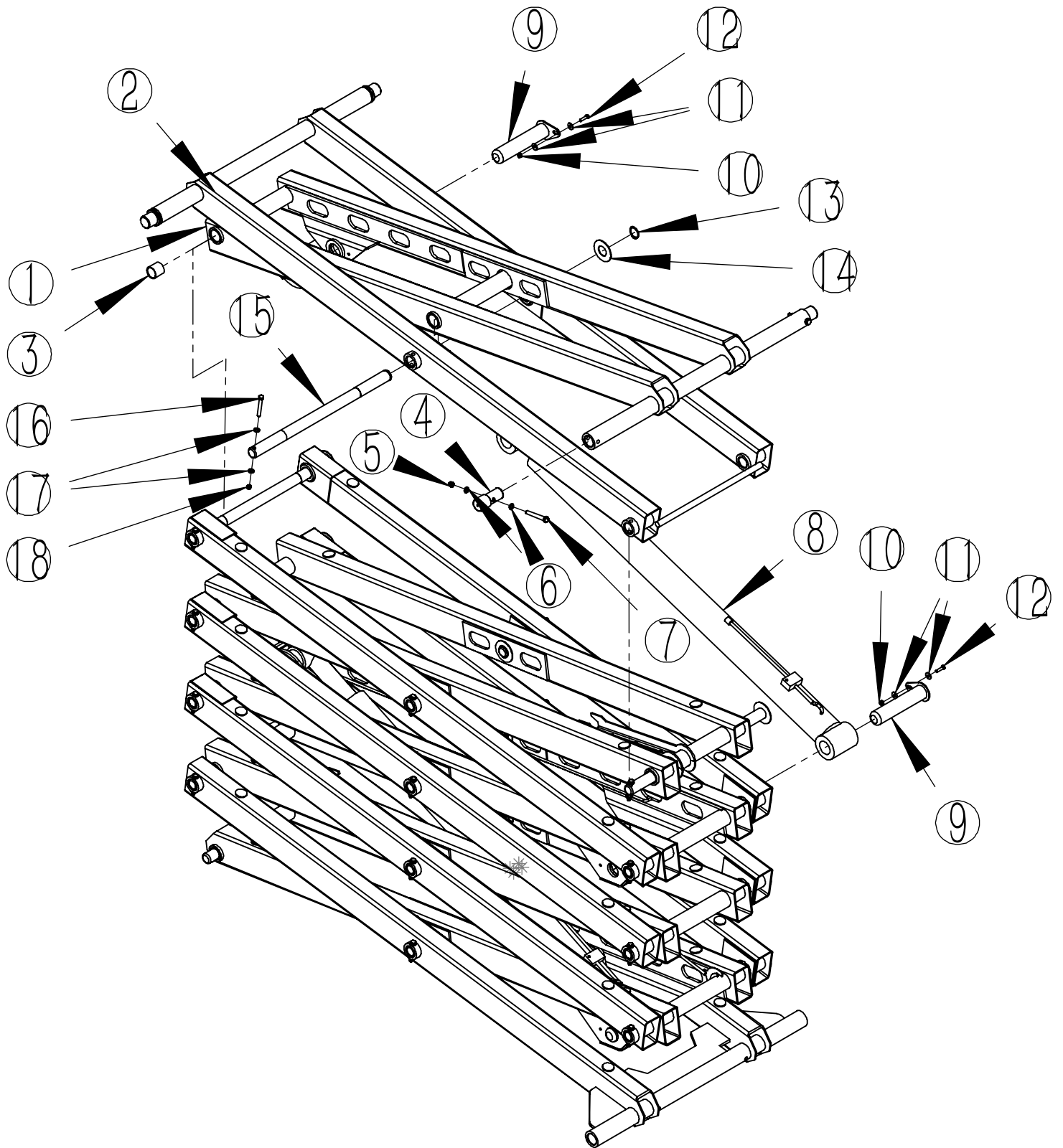
2-2 Part two



2-2 Part two

part two					
NO.	Figure number	name	Part number	Quantity	Product model
1	140XEN-310300-000	Stent C		1	120XEN
2	CT-513844-G00	Bushing		6	120XEN
3	140XEN-320200-000	External stent		4	120XEN
4	140XEN-010002-000	Short pin		4	120XEN
5	GB70.1-10×80	bolt		3	120XEN
6	GB97.1—10	gasket		3	120XEN
7	GB889.1-10	lock nut		3	120XEN
8	140XEN-300001-000	Thick gasket		3	120XEN
9	GB894-38	clamp spring 38		3	120XEN
10	140XEN-620100-000	Lifting cylinder		1	120XEN
11	78XEN-640400-G00	Cylinder valve block		1	120XEN
12	GB70.1-8×60	bolt		4	120XEN
13	140XEN-010100-000	Oil cylinder pin		2	120XEN
14	GB5783-8×30	bolt		2	120XEN
15	GB96.1-8	gasket		4	120XEN
16	GB889.1-8	lock nut		2	120XEN
17	140XEN-300100-000	Safety arm		2	120XEN
18	GB5783-8×25	bolt		3	120XEN
19	GB97.1—8	gasket		6	120XEN
20	140XEN-010001-000	Long pin shaft		4	120XEN
21	140XEN-310400-000	Stent H		1	120XEN
22	140XEN-320500-000	External stent		2	120XEN

2-3 Part three

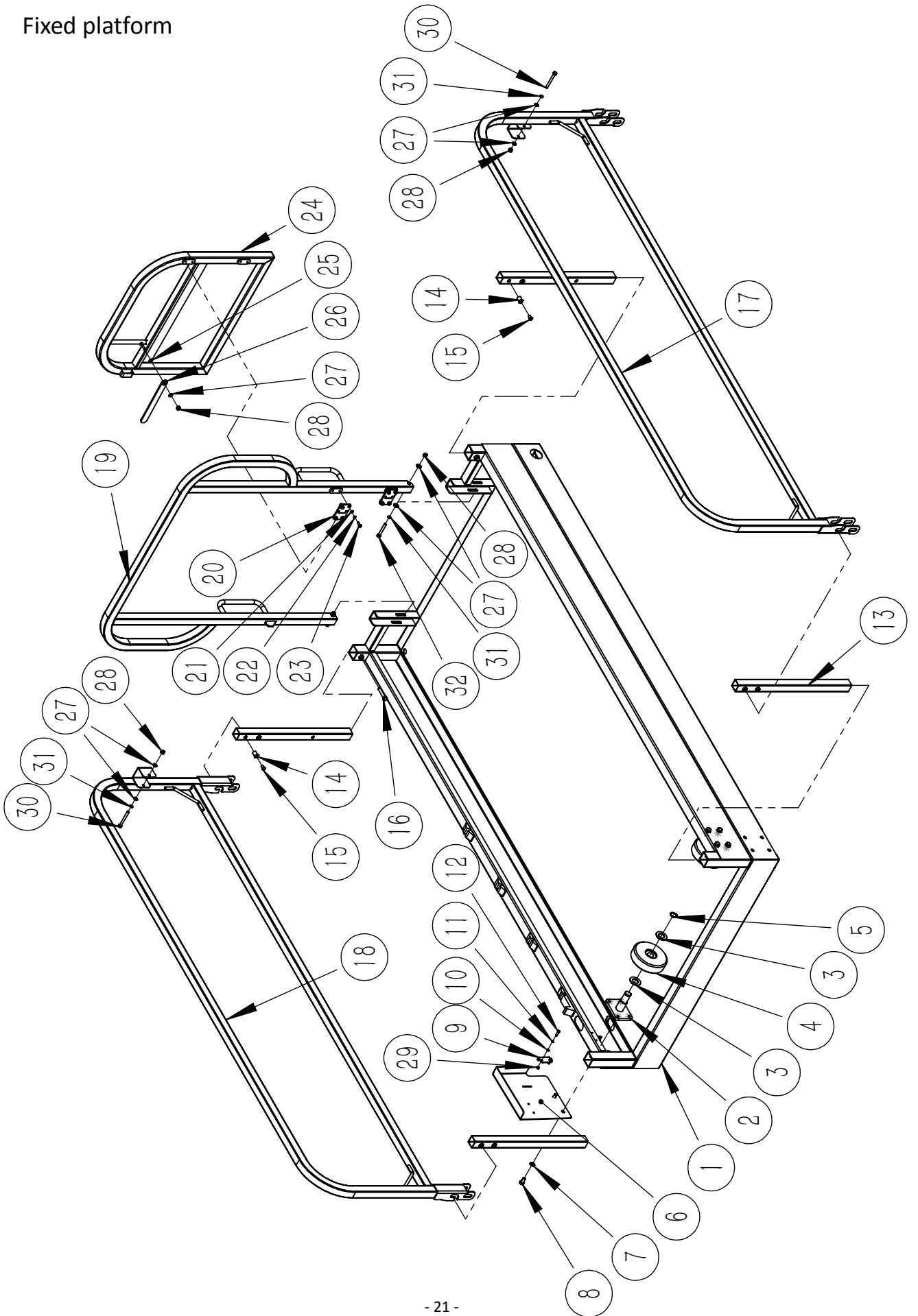


2-3 Part three

part three					
NO.	Figure number	name	Part number	Quantity	Product model
1	120XEN-310600-000	Top inner bracket		1	120XEN
2	140XEN-320400-000	Top bracket		1	120XEN
3	CT-513844-G00	Bushing		1	120XEN
4	140XEN-010006-000	Activities shoulder		2	120XEN
5	GB889.1-12	Lock out		2	120XEN
6	GB97.1—12	Gasket		4	120XEN
7	GB5783-12×90	bolt		2	120XEN
8	140XEN-620100-000	Lifting cylinder		1	120XEN
9	140XEN-010100-000	pin		2	120XEN
10	GB889.1-8	Lock out		2	120XEN
11	GB96.1-8	Gasket		4	120XEN
12	GB5783-8×30	bolt		2	120XEN
13	GB894-30	Champ spring		1	120XEN
14	140XEN-300001-000	Thick gasket		1	120XEN
15	140XEN-010001-000	Long pin shaft		1	120XEN
16	GB70.1-10×80	bolt		1	120XEN
17	GB97.1—10	Gasket		2	120XEN
18	GB889.1-10	Lock out		1	120XEN

3 platform

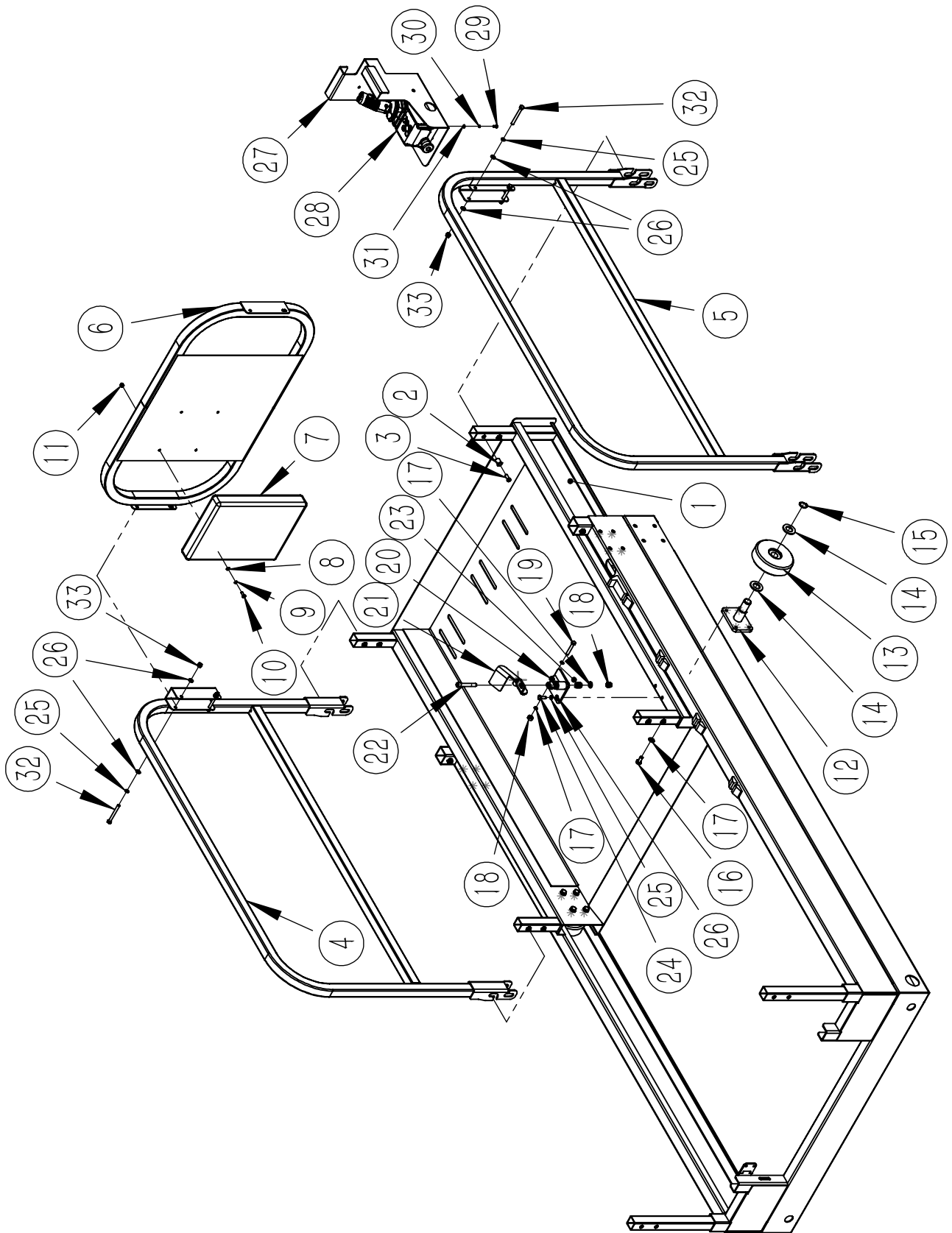
3-1 Fixed platform



3-1 Fixed platform

Fixed platform					
NO.	Figure number	name	Part number	Quantity	Product model
1	140XEN-211000-001	Fixed platform		1	120XEN
2	78XEN-235000-000	stent		2	120XEN
3	GB97.1—24	Gasket		4	120XEN
4	78XEN-820005-000	idler wheel		2	120XEN
5	GB894-24	clamp spring		2	120XEN
6	78XEN-233000-001	Fixed plate		1	120XEN
7	GB97.1—10	Gasket		8	120XEN
8	GB5783-10×20	bolt		8	120XEN
9	78XEN-200002-000	Fixed plate for handle line		1	120XEN
10	GB97.1—5	Gasket		2	120XEN
11	GB93-5	Gasket		2	120XEN
12	GB5783-5×16	bolt		2	120XEN
13	140XEN-211010-001	Fixed platform base		4	120XEN
14	GB17880.2-8	Riveting nut		16	120XEN
15	GB70.1-8×12	bolt		16	120XEN
16	GB5783-10×50	bolt		4	120XEN
17	140XEN-212000-001	left guard rail		1	120XEN
18	140XEN-213000-001	right guard rail		1	120XEN
19	140XEN-214000-001	rear guard rail		1	120XEN
20	78XEN-040200-G00	Door hinge		2	120XEN
21	GB97.1—6	gasket		8	120XEN
22	GB93-6	gasket		8	120XEN
23	GB5783-6×16	bolt		8	120XEN
24	140XEN-215000-001	Side door		1	120XEN
25	78XEN-830003-000	Plastic mat		1	120XEN
26	78XEN-200001-001	latch		1	120XEN
27	GB97.1—8	gasket		9	120XEN
28	GB889.1-8	lock nut		5	120XEN
29	GB13681-5	nut		2	120XEN
30	GB5783-8×75	bolt		2	120XEN
31	GB93-8	gasket		4	120XEN
32	GB5783-8×60	bolt		2	120XEN

3-2 Mobile platform

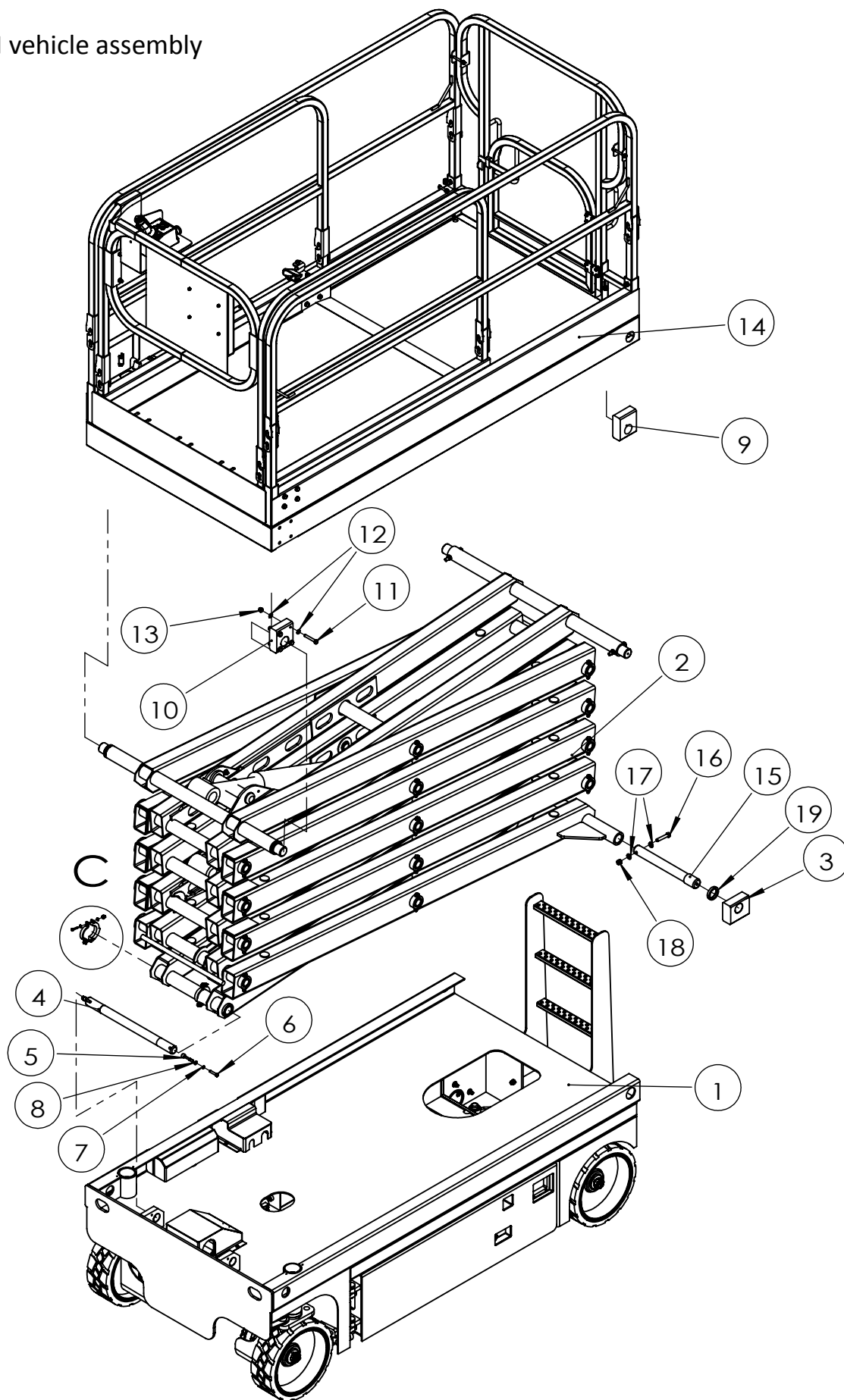


3-2 Mobile platform

Mobile platform					
NO.	Figure number	name	Part number	Quantity	Product model
1	140XEN-221000-001	Mobile platform		1	120XEN
2	GB17880.2-8	bolt		16	120XEN
3	GB70.1-8×12	bolt		16	120XEN
4	140XEN-222000-001	left guard rail		1	120XEN
5	140XEN-223000-001	right guard rail		1	120XEN
6	140XEN-224000-001	Guard rail		1	120XEN
7	78XEN-820100-000	File box		1	120XEN
8	GB97.1—6	Gasket		4	120XEN
9	GB93-6	Gasket		4	120XEN
10	GB5783-6×16	bolt		4	120XEN
11	GB/T 923-6	nut		4	120XEN
12	78XEN-235000-000	Roller bracket		2	120XEN
13	78XEN-820005-000	idler wheel		2	120XEN
14	GB97.1—24	Gasket		4	120XEN
15	GB894-24	clamp spring		2	120XEN
16	GB5783-10×20	bolt		8	120XEN
17	GB97.1—10	Gasket		10	120XEN
18	GB889.1-10	lock nut		2	120XEN
19	GB5783-10×45	bolt		1	120XEN
20	78XEN-231000-000	pedestal		1	120XEN
21	78XEN-232000-000	pedal		1	120XEN
22	GB70.1-10×65	bolt		1	120XEN
23	78XEN-040201-000	spring		1	120XEN
24	GB5783-8×20	bolt		2	120XEN
25	GB93-8	Gasket		4	120XEN
26	GB97.1—8	Gasket		6	120XEN
27	140XEN-234000-000	Control handle bracket		1	120XEN
28	78XEN-750000-G00	PCU		1	120XEN
29	GB818-5x12	cross screw		4	120XEN
30	GB93-5	Gasket		4	120XEN
31	GB97.1—5	Gasket		4	120XEN
32	GB5783-8×75	bolt		2	120XEN
33	GB889.1-8	lock nut		2	120XEN

4 vehicle assembly

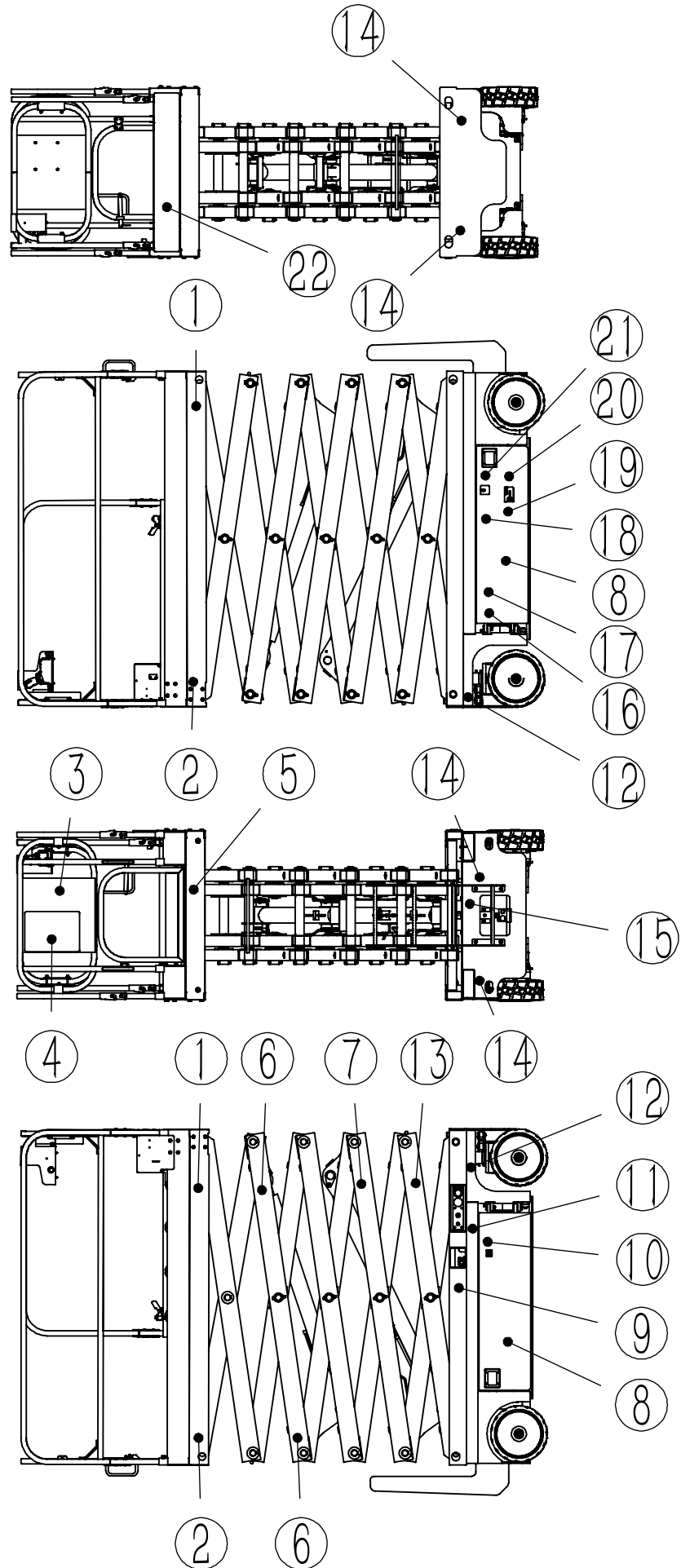
4-1 120XEN vehicle assembly



4-1 120XEN vehicle assembly

120XEN vehicle assembly					
NO.	Figure number	name	Part number	Quantity	Product model
1	140XEN-400000-000	Chassis assembly		1	120XEN
2	120XEN-500000-000	Scissor assembly		1	120XEN
3	140XEN-000002-001	slider		2	120XEN
4	140XEN-534000-001	pin		1	120XEN
5	78XEN-020002-000	bolt		2	120XEN
6	GB5783-8×50	bolt		2	120XEN
7	GB93-8	Gasket		2	120XEN
8	GB97.1—8	Gasket		2	120XEN
9	78XEN-820003-000	slider		2	120XEN
10	78XEN-820001-000	slider		2	120XEN
11	GB5783-10×60	bolt		8	120XEN
12	GB97.1—10	Gasket		16	120XEN
13	GB889.1-10	lock nut		8	120XEN
14	140XEN-200000-000	Platform assembly		1	120XEN
15	140XEN-010004-000	Fixed axis		2	120XEN
16	GB5783-12×65	bolt		2	120XEN
17	GB97.1—12	gasket		4	120XEN
18	GB889.1-12	lock nut		2	120XEN
19	140XEN-300002-000	Spacer bush		2	120XEN

4-2 Sticker schematic

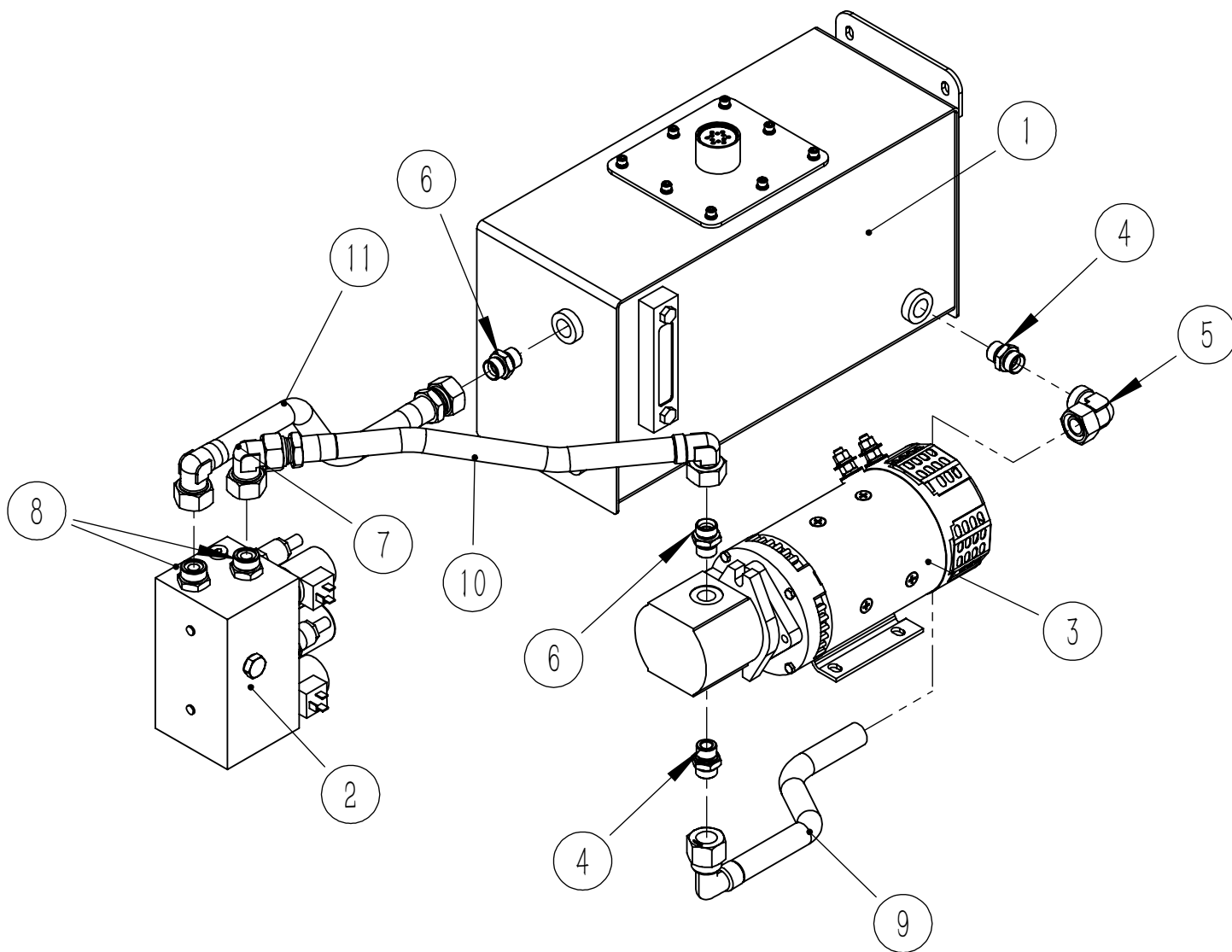


4-2 Sticker schematic

Sticker schematic					
NO.	Figure number	name	Part number	Quantity	Product model
1	120XEN-020001-000	Stickers 120XEN		2	120XEN
2	78XEN-920017-000	Stickers HANGCHA		2	120XEN
3	78XEN-920004-000	Load rating		1	120XEN
4	78XEN-920021-000	File box		1	120XEN
5	78XEN-920005-000	Load instructions		1	120XEN
6	78XEN-920009-000	Article warning		2	120XEN
7	78XEN-920008-000	Head guard		1	120XEN
8	78XEN-920012-000	prevent the presser foot		2	120XEN
9	78XEN-920020-000	Emergency descent schematic		1	120XEN
10	78XEN-920010-000	Waterproof tip		1	120XEN
11	78XEN-920015-000	Read the instruction before operation		1	120XEN
12	78XEN-920007-000	Replace the tires		2	120XEN
13	78XEN-920014-000	Maintenance instructions		1	120XEN
14	78XEN-920011-000	Lifting point		4	120XEN
15	78XEN-920003-000	Walking release instructions		1	120XEN
16	78XEN-920013-000	Battery safety warning		1	120XEN
17	78XEN-920016-000	Battery replacement requirements		1	120XEN
18	78XEN-920002-000	Power failure instructions (English)		1	120XEN
19	78XEN-920019-000	Battery maintenance (English)		1	120XEN
20	78XEN-920019-001	Battery maintenance (Chinese)		1	120XEN
21	78XEN-920002-001	Power failure instructions (Chinese)		1	120XEN
22	78XEN-920018-000	stickers HANGCHA		1	120XEN

5 Hose assembly

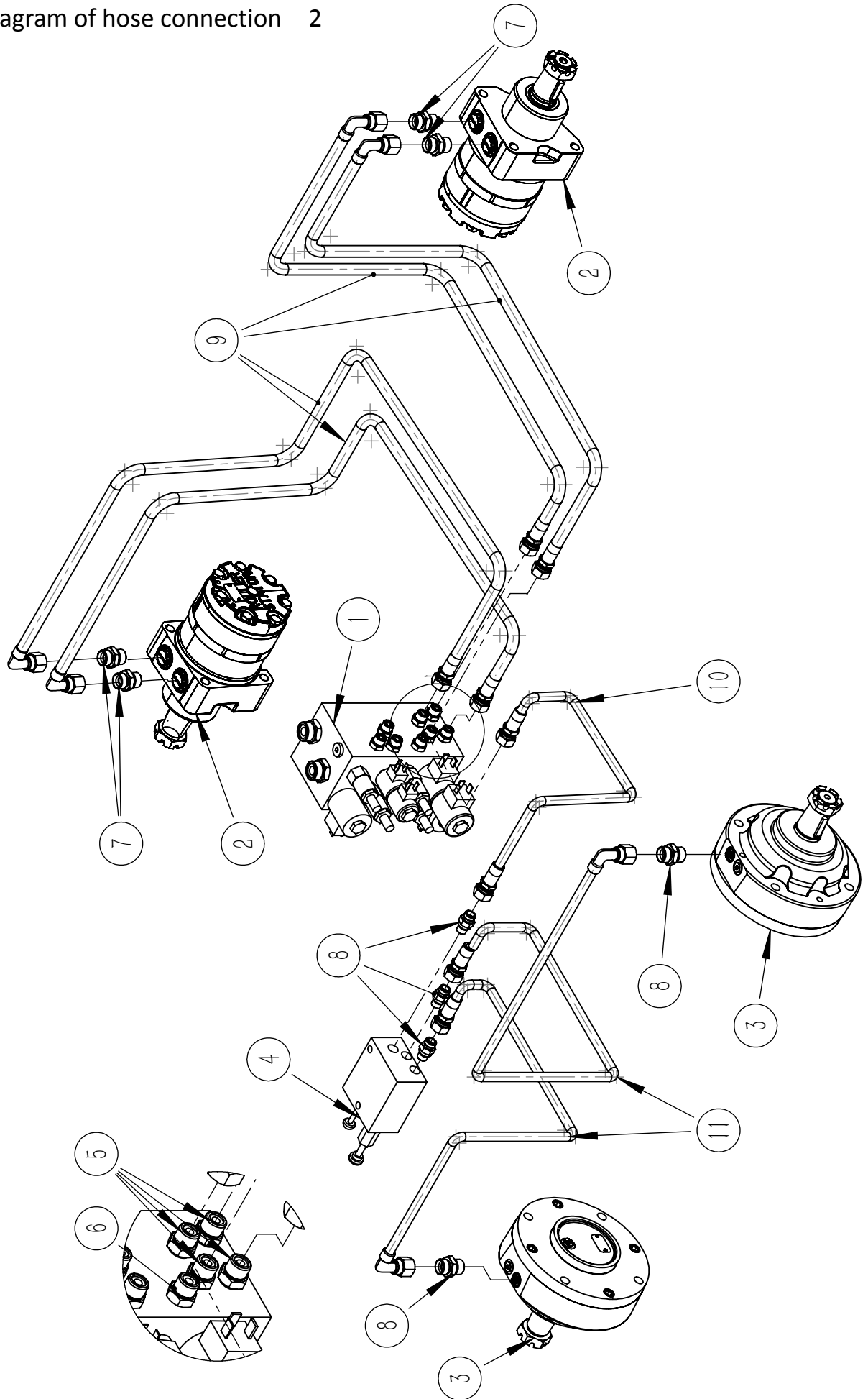
5-1 Diagram of hose connection 1



5-1 Diagram of hose connection 1

Diagram of hose connection1					
NO.	Figure number	name	Part number	Quantity	Product model
1	140XEN-610000-000	Oil tank		1	120XEN
2	140XEN-640100-G00	Mainfold		1	120XEN
3		oil pump Motor		1	120XEN
4	JT-110830-G00	G1/2-M30		2	120XEN
5	JT-203030-G00	Joint M30		1	120XEN
6	JT-110824-G00	G1/2-M24		2	120XEN
7	JT-202424-G00	Joint M24		1	120XEN
8	JT-101824-G00	M18-M24		2	120XEN
9	140XEN-630001-001	High pressure hose		1	120XEN
10	140XEN-630002-001	High pressure hose		1	120XEN
11	140XEN-630009-001	High pressure hose		1	120XEN

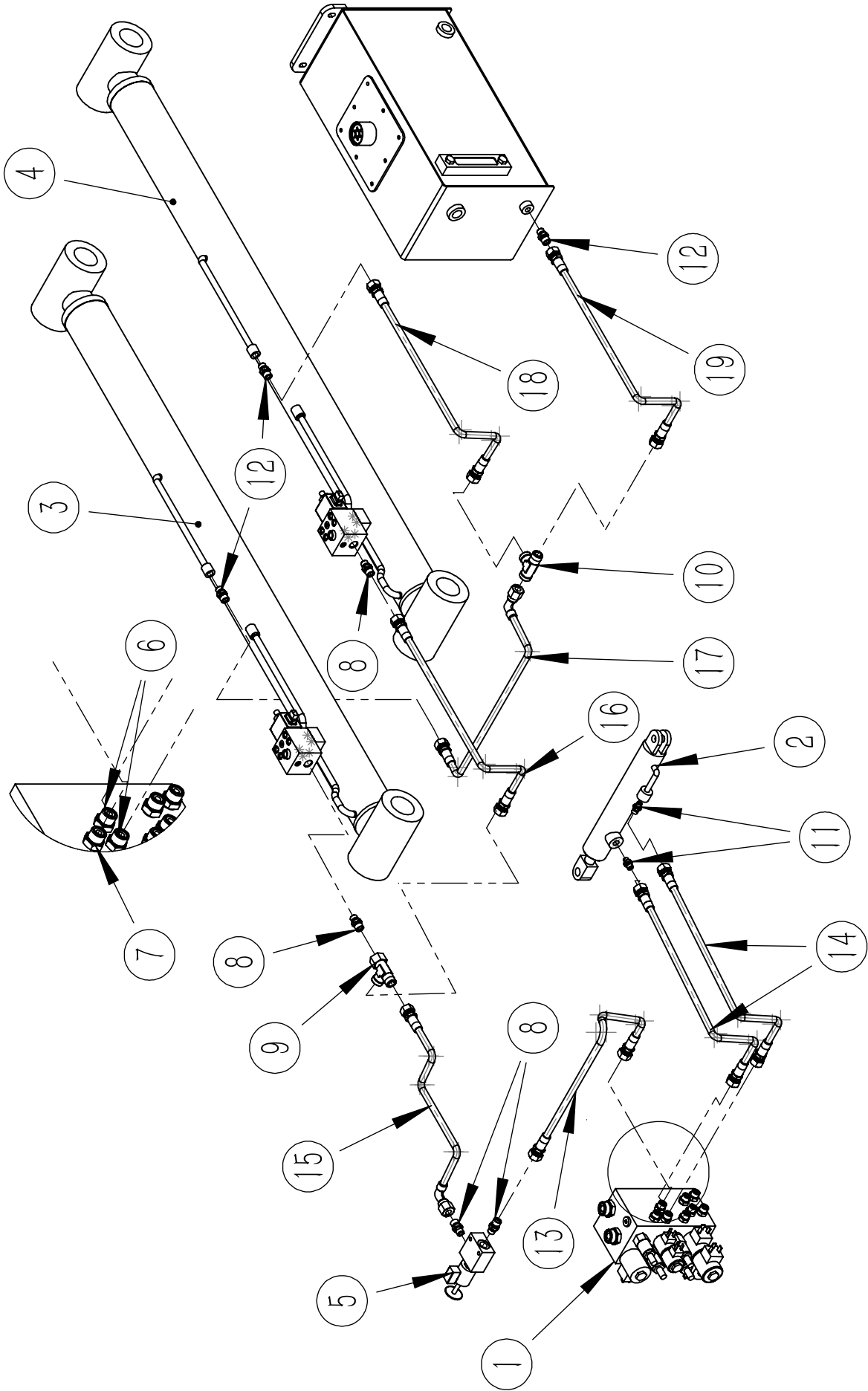
5-2 Diagram of hose connection 2



5-2 Diagram of hose connection 2

Diagram of hose connection2					
NO.	Figure number	name	Part number	Quantity	Product model
1	140XEN-640100-G00	Mainfold		1	120XEN
2	140XEN-130100-G00	Hydraulic motor		2	120XEN
3	78XEN-120100-G00	brake		2	120XEN
4	78XEN-640300-G00	Manual pump		1	120XEN
5	JT-101620-G00	Joint M16-M20		4	120XEN
6	JT-101416-G00	Joint M14-M16		1	120XEN
7	JT-110820-G00	G1/2-M20		4	120XEN
8	JT-110716-G00	7/16-M16		5	120XEN
9	140XEN-630004-001	High pressure hose		4	120XEN
10	140XEN-630006-001	High pressure hose		1	120XEN
11	140XEN-630008-001	High pressure hose		2	120XEN

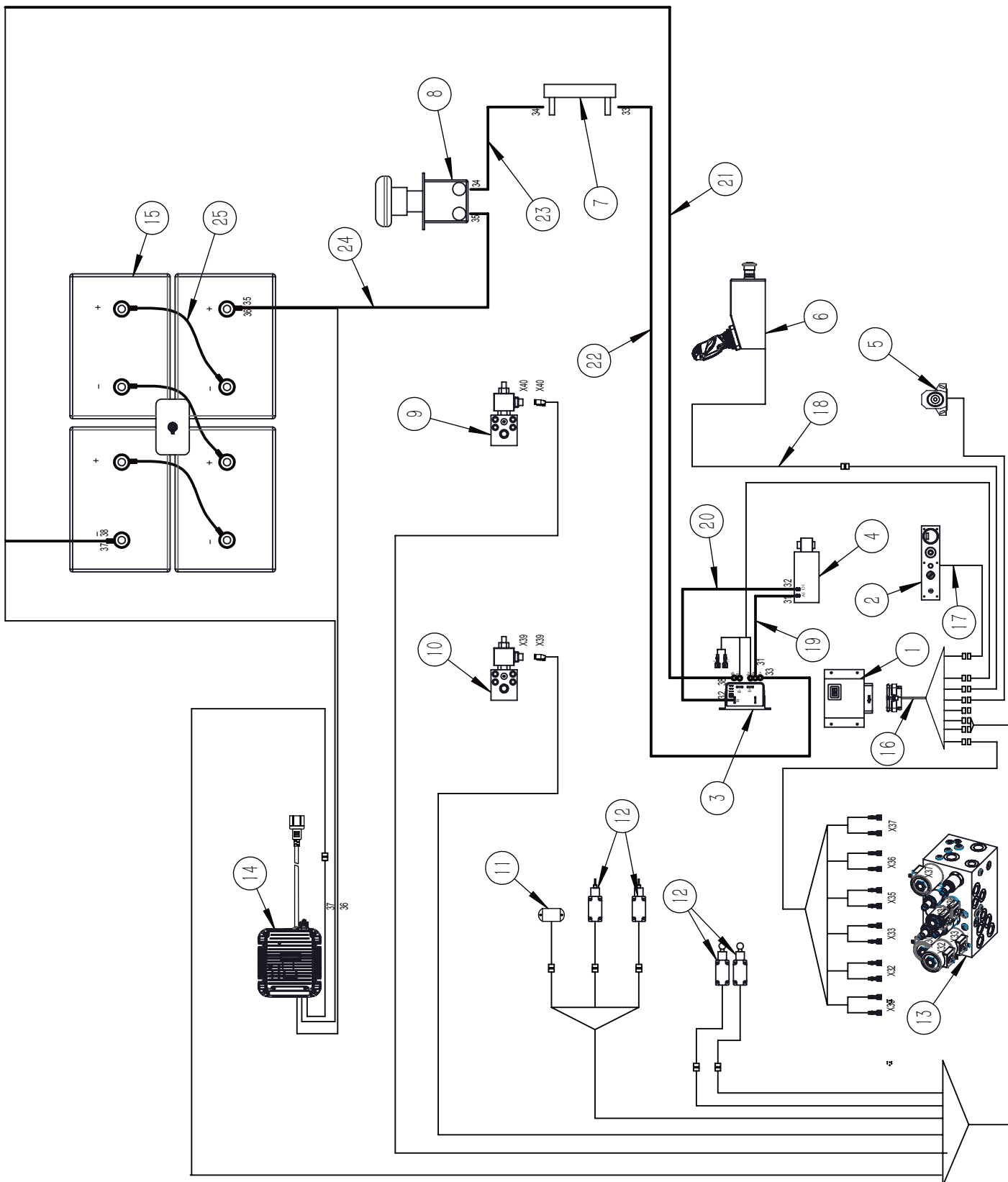
5-3 Diagram of hose connection 3



5-3 Diagram of hose connection 3

Diagram of hose connection3					
NO.	Figure number	name	Part number	Quantity	Product model
1	140XEN-640100-G00	Mainfold		1	120XEN
2	140XEN-620300-000	Steering cylinder		1	120XEN
3	140XEN-620100-000	Lifting cylinder		1	120XEN
4	140XEN-620200-000	Lifting cylinder		1	120XEN
5	78XEN-640200-G00	Manual relief valve		1	120XEN
6	JT-101416-G00	M14-M16		2	120XEN
7	JT-101620-G00	M16-M20		1	120XEN
8	JT-110620-G00	G3/8-M20		4	120XEN
9	JT-302020-G00	Tee Fitting M20		1	120XEN
10	JT-312020-G00	Tee Fitting M20		1	120XEN
11	JT-110416-G00	G1/4-M16		2	120XEN
12	JT-110420-G00	G1/4-M20		3	120XEN
13	140XEN-630003-000	High pressure hose		1	120XEN
14	140XEN-630005-001	High pressure hose		2	120XEN
15	140XEN-630007-001	High pressure hose		1	120XEN
16	140XEN-630010-001	High pressure hose		1	120XEN
17	140XEN-630011-001	Low pressure hose		1	120XEN
18	140XEN-630012-001	Low pressure hose		1	120XEN
19	140XEN-630013-001	Low pressure hose		1	120XEN

6 Schematic diagram of electrical connection



Schematic diagram of electrical connection					
NO.	Figure number	name	Part number	Quantity	Product model
1	78XEN-740200-G00	ECU		1	120XEN
2	78XEN-740500-000	Control panel		1	120XEN
3	78XEN-740100-G00	Controller 1204		1	120XEN
4	78XEN-110100-G00	electrical machinery (3.3kW)		1	120XEN
5	78XEN-740800-G00	buzzer		1	120XEN
6	78XEN-750000-G00	PCU		1	120XEN
7	78XEN-740400-G00	fuse		1	120XEN
8	78XEN-740300-G00	Mains switch		1	120XEN
9	78XEN-640400-G00	Cylinder valve block		1	120XEN
10	78XEN-640200-G00	Manual relief valve		1	120XEN
11	78XEN-740700-G00	Angle sensor		1	120XEN
12	78XEN-740600-G00	limit switch		4	120XEN
13	140XEN-640100-G00	Mainfold		1	120XEN
14	78XEN-760200-G00	charger		1	120XEN
15	140XEN-760100-G00	Battery (6 v)		4	120XEN
16	140XEN-720000-000	The switch wire harness		1	120XEN
17	140XEN-710000-Q00	principal wire bundle		1	120XEN
18	140XEN-700100-000	Tie line		1	120XEN
19	140XEN-730400-000	cable		1	120XEN
20	140XEN-730500-000	cable		1	120XEN
21	140XEN-730300-000	cable		1	120XEN
22	140XEN-730600-000	cable		1	120XEN
23	140XEN-730200-000	cable		1	120XEN
24	140XEN-730100-000	cable		1	120XEN
25	140XEN-730700-000	cable		2	120XEN