

HANGCHA

Hangcha Group Co., Ltd

Address: 666 Xiangfu Road , Qingshanhu
science and Technology City, Hangzhou,
Zhejiang.

TEL: +86-571-87938011

+86-571-87938001

Articulating boom lifts

HZ210AI

Spare parts manual

PREFACE

Chapter 1 chassis	4
Figure1—2 Front axle assembly	7
Figure1—3 Box and chassis assembly	10
Figure1—4 Chassis A assembly (一)	12
Figure1—5 Chassis A assembly (二)	14
Chapter 2 turntable	16
Figure2—1 Rotating frame and chassis a assembly	17
Figure2—2 Counterweight and rotating frame assembly	19
Figure2—3 Turntable assembly	21
Figure2—4 Turntable assembly (二)	24
Chapter 3 Boom	27
Figure3—1 Assembly of boom and rotating frame	28
Figure3—2 Boom assembly	30
Figure 3—4 Upper secondary boom and telescopic boom assembly	35
Figure 3—5 Upper secondary boom and telescopic boom assembly (二)	37
Figure3—6 Jib and lift boom assembly	39
Figure3—7 Jib Assembly	41
Chapter 4 Working platform	43
Figure4—1 Working platform and jib Assembly	44
Figure4—2 Working platform Assembly	46
Chapter 5 Hydraulic system	49

Figure5-1 Hydraulic Circuit	50
Figure 5-2 Tank Assembly	53
Figure5-3 Oscillation cylinder assembly	55
Figure 5-4 Lower secondary boom cylinder	57
Figure 5-5 Upper secondary boom cylinder	59
Figure5-6 Telescopic boom cylinder	61
Figure5-7 Upper Leveling cylinder	63
Figure 5-8 Jib cylinder	65
Chapter 6 electrical system	67
Figure6-1 Cable Assembly	68
Figure6-2 Pump Driver Assembly	72
Figure6-3 Fuse assembly	74
Figure6-4 Lower controller assembly	76
Figure6-5 Upper control Assembly	78
Chapter 7 adhesive signs	80
Figure7-1 adhesive signs	81

Chapter 1 chassis

Figure1-1 Front axle assembly and chassis assembly

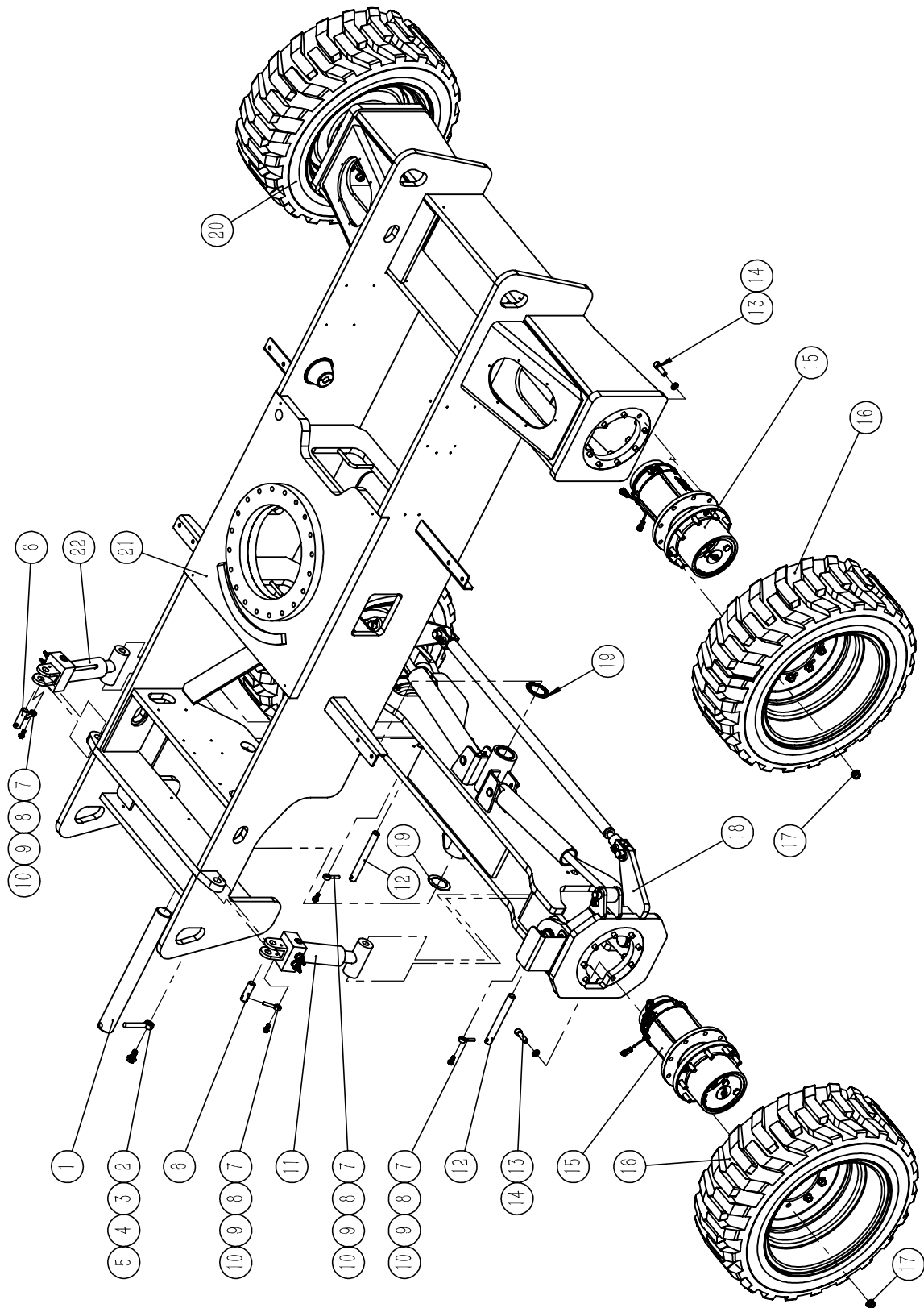


Figure1-1 Front axle assembly and chassis assembly

序号 Item No.	代号 Part No.	名称 Description	数量 Qty	备注或适用车型 Remarks or Series No.	物料码 Code No.
1	GTHZ210C-400019-000	Shaft 60545	1		224000050014
2	GTHZ210C-200007-000	Shaft 16120	1		222100030027
3	GB5789-86	Bolt M16 × 35	1	8.8	300010080013
4	GB93-87	Washer 16	1		300030010004
5	GB97.1-85	Washer 16	1		300030040005
6	GTHZ210C-400018-000	Shaft 25068	2		224000050013
7	GTHZ210C-200006-000	Shaft 10060	2		222100030026
8	GB5789-86	Bolt M10 × 25	4	8.8	300010080001
9	GB93-87	Washer 10	4		300030010001
10	GB97.1-85	Washer 10	4		300030040002
11		Left oscillation cylinder assembly	1	See the figure for details 5-3	
12	GTHZ210C-200012-000	Shaft 25213	2		222100030031
13	GTHZ170-130001-000	Screw 5/8-11 × 2 1/4"	32		221300020001
14	GB7244-87	Washer 16	32		300030090003
15	GTHZ210C-130000-G00	Traveling reducer	4		221300000006
16	GTHZ210C-110000-G00	Left tire	2		221100020007
17	GTHZ170C-110002-000	Tire Nut	36		
18	GTHZ210C-200000-000	Front axle assembly	1		220010020015
19	CT-606260-G00	Washer 60	2		229000070020
20	GTHZ210C-120000-G00	Right tire	2		221100020008
21	GTHZ210C-410000-000	Chassis	1		224100000046
22		Right oscillation cylinder assembly	1	See the figure for details 5-3	

Figure1-2 Front axle assembly

序号 Item No.	代号 Part No.	名称 Description	数量 Qty	备注或适用车型 Remarks or Series No.	物料码 Code No.
1	GTHZ210C-210200-000	Left steering assembly	1		222100000032
2	GTHZ210C-200001-000	Shaft 60085	3		222100030022
3	GTHZ210C-200007-000	Shaft 16120	4		222100030027
4	GB5789-86	Bolt M16×35	4	8.8	300010080013
5	GTHZ210C-210100-000	Front axle assembly	1		222100000031
6	GTHZ210C-620100-000	Steering cylinder	2		226200020009
7	GTHZ210C-200010-000	Shaft 30110	2		222100030030
8	GTHZ210C-200006-000	Shaft 10060	8		222100030026
9	GB/T5789-1986	Bolt M10×25	8		300010080001
10	GTHZ210C-200002-000	Shaft	1		222100030023
11	GTHZ210C-200200-000	Baffle	2		222100000077
12	GB/T5789-1986	Bolt M8×20	8	8.8	300010080025
13	GTHZ210C-200004-000	Fixed seat	1		222100030025
14	GTHZ210C-200005-000	Protective cover	1		222100020019
15	GB93-87	Washer 5	3		300030010013
16	GB70-85	Screw M5×12	3	8.8	300040020127
17	GB70-85	Screw M6×25	4	8.8	300040020157
18	GB93-87	Washer 6	4		300030010014
19	GTHZ210C-200100-000	Bracket	2		222100000030
20	GTHZ210C-200009-000	Shaft 30100	2		222100030029
21	GTHZ210C-210300-000	Right steering assembly	1		222100000033
22	GTHZ210C-200011-000	Bushing	4		222100060005
23	GTHZ210C-200008-000	Shaft 30060	2		222100030028
24	CT-113025-G00	Busing 3025	2		222100060006
25	GTHZ210C-210400-000	Steering pull rod	1		222100000034

Figure1-2 Front axle assembly

序号 Item No.	代号 Part No.	名称 Description	数量 Qty	备注或适用车型 Remarks or Series No.	物料码 Code No.
26	GB6173-86	Nut M24×2	1	8	300020040012
27	GTHZ210C-210500-000	Connecting seat	1		222100000035
28	CT-526060-G00	Fibre Busing	2		222100060007

Figure1-3 Box and chassis assembly

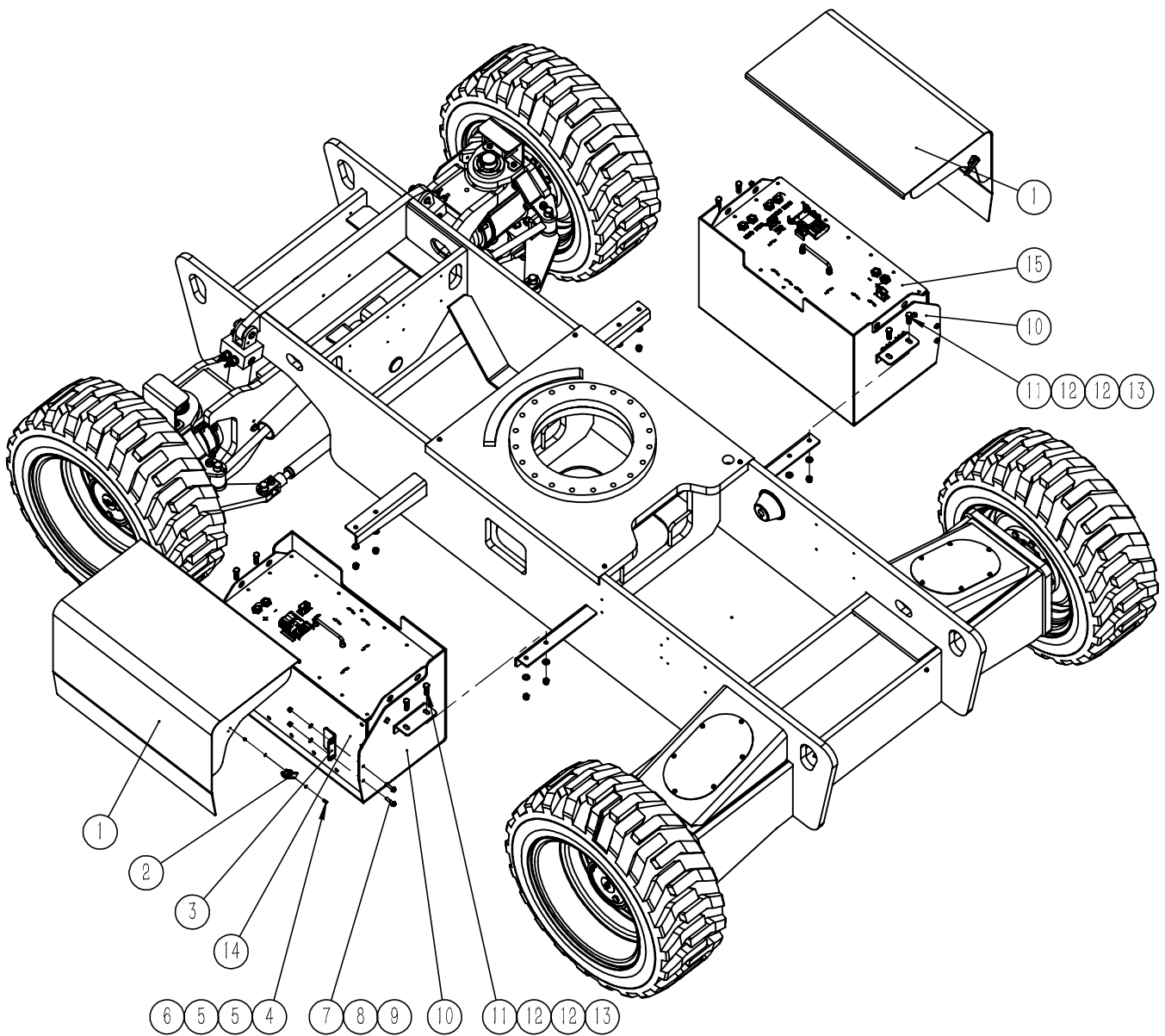


Figure1-3 Box and chassis assembly

序号 Item No.	代号 Part No.	名称 Description	数量 Qty	备注或适用车型 Remarks or Series No.	物料码 Code No.
1	GTHZ210C-401100-000	Battery box cover	2		224000000085
2	GTHZ120-402500-G00	Latch	4		224000100002
3	GTHZ210C-400028-000	Battery baffle	4		224000040223
4	GB5783-86	Bolt M4 × 12	8	8.8	300010040128
5	GB97.1-85	Washer 4	16		300030040011
6	GB889-86	Nut M4	8		300020150008
7	GB5789-86	M8 × 30	8	8.8	300010080005
8	GB97.1-85	Washer 8	8		300030040014
9	GB889-86	Nut M8	8	8	300020150004
10	GTHZ210C-401000-000	Battery box	2		224000000084
11	GB5783-86	Bolt M12 × 40	8	8.8	300010040037
12	GB97.1-85	Washer 12	16		300030040003
13	GB889-86	Nut M12	8	8	300020150006
14	GTHZ210C-760100-000	Left battery box assembly	1		227600030007
15	GTHZ210C-760200-000	Right battery box assembly	1		227600030006

Figure1-4 Chassis A assembly (-)

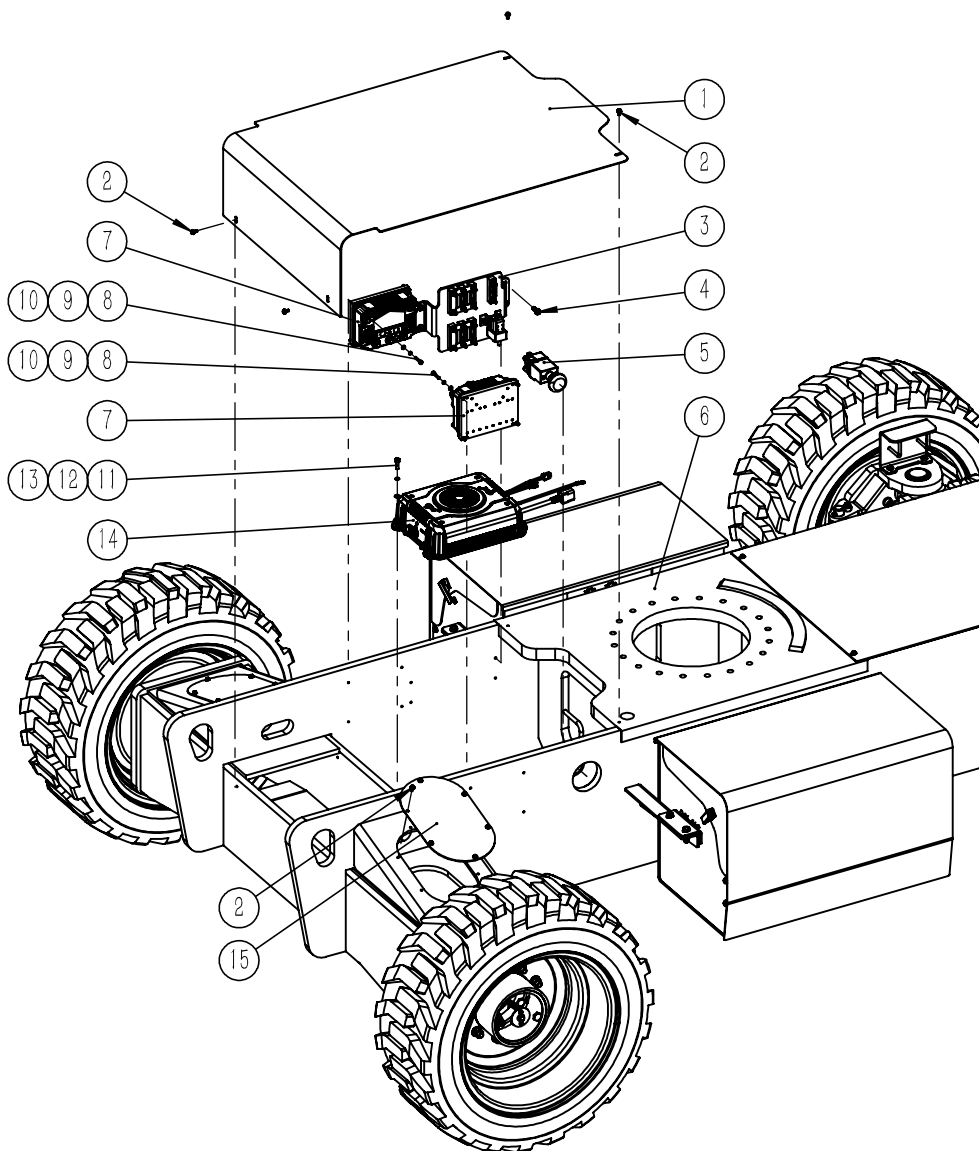


Figure1-4 Chassis A assembly (一)

序号 Item No.	代号 Part No.	名称 Description	数量 Qty	备注或适用车型 Remarks or Series No.	物料码 Code No.
1	GTHZ210C-400001-000	Rear cover	1		224000040119
2	GB5789-86	Bolt M6×12	16	8.8	300010080014
3		Fuse assembly	1	See the figure for details6-3	
4	GB5789-86	Bolt M8×25		8.8	300010080026
5	GTHZ170C-750100-G00	Power off switch	1		227200010003
6	GTHZ210C-410000-000	Chassis	1		224100000046
7	GTHZ170C-750200-G00	Driver	2		227500020003
8	GB70-85	Screw M6×30	8	8.8	300040020126
9	GB93-87	Washer 6	8		300030010014
10	GB97.1-85	Washer 6	8		300030040013
11	GB70-85	Screw M8×25	4	8.8	300040020098
12	GB93-87	Washer 8	4		300030010015
13	GB97.1-85	Washer 8	4		300030040014
14	GTHZ210C-750700-G00	Charger (big)	1		227800010008
15	GTHZ210C-400003-000	Plate	2		224000030061

Figure1-5 Chassis A assembly (二)

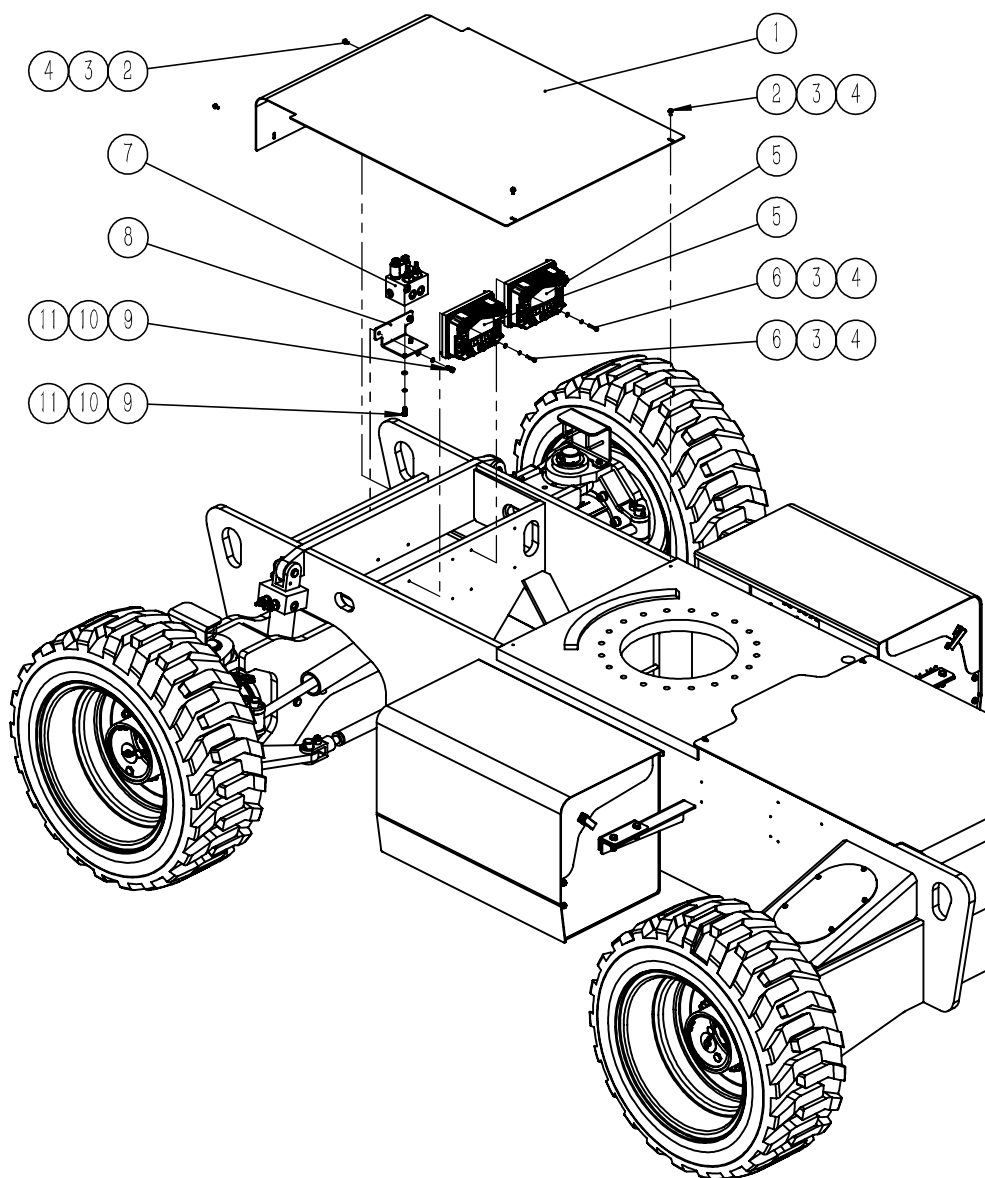


Figure1-5 Chassis A assembly (二)

序号 Item No.	代号 Part No.	名称 Description	数量 Qty	备注或适用车型 Remarks or Series No.	物料码 Code No.
1	GTHZ210C-400002-000	Front plate	1		224000040120
2	GB5789-86	Bolt M6×12	4	8.8	300010080014
3	GB93-87	Washer 6	12		300030010014
4	GB97.1-85	Washer 6	12		300030040013
5	GTHZ170C-750200-G00	Driver	2		227500020003
6	GB70-85	Screw M6×30	8	8.8	224100000046
7	HZ210A1-640500-G01	Hydraulic floating valve block	1		226400030005
	HZ210A1-640500-G02	Hydraulic floating valve block	1	2022.10.18	
8	GTHZ210C-400020-000	Mounting plate	1		224000040137
9	GB5783-86	Bolt M8×20	2	8.8	300040020098
10	GB93-87	Washer 8	2		300030010015
11	GB97.1-85	Washer 8	2		300030040014

Chapter 2 turntable

Figure2—1 Rotating frame and chassis a assembly

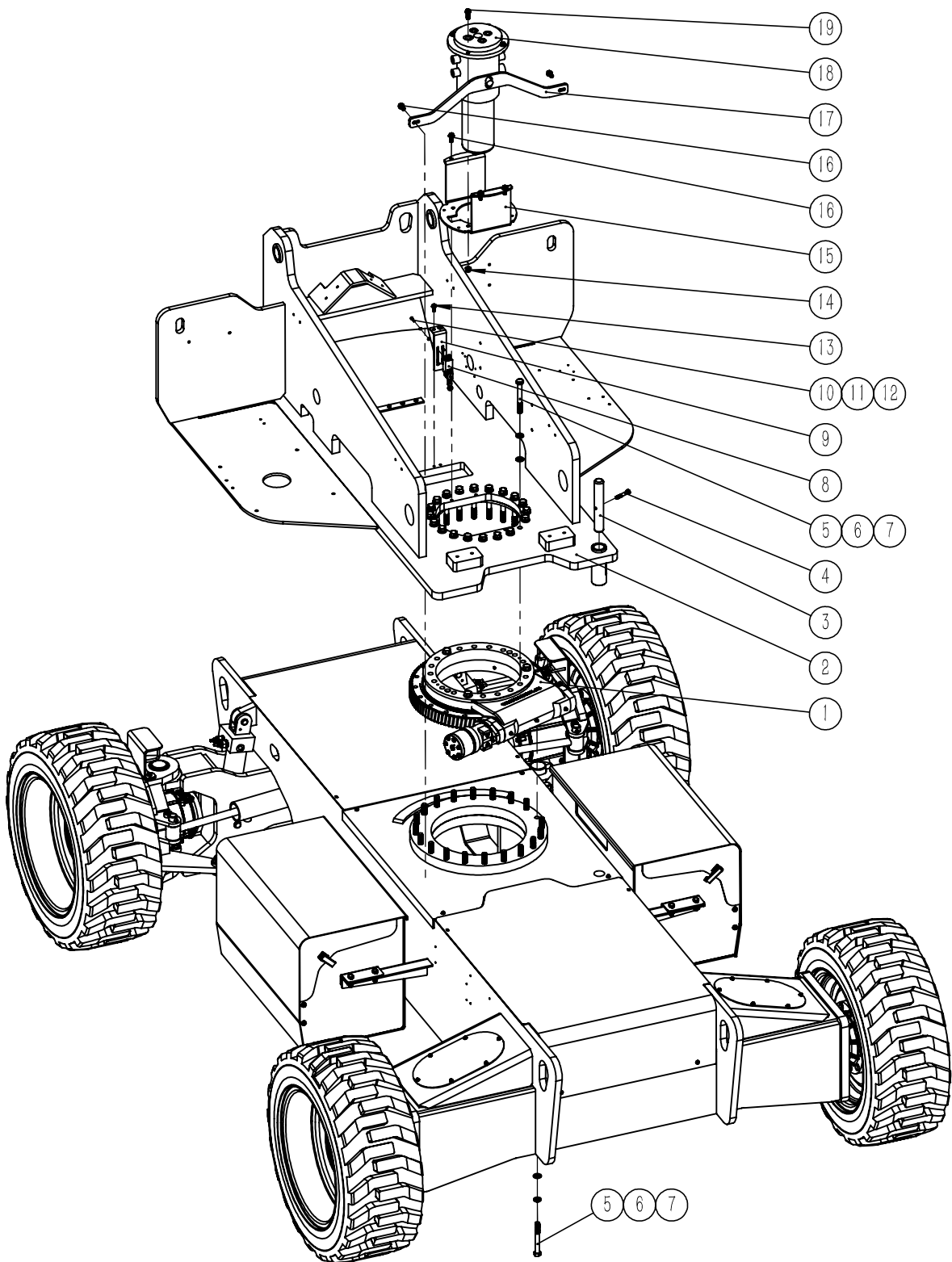


Figure2-1 Rotating frame and chassis a assembly

序号 Item No.	代号 Part No.	名称 Description	数量 Qty	备注或适用车型 Remarks or Series No.	物料码 Code No.
1	GTHZ210C-400100-G00	Rotation reducer	1		221300010004
2	GTHZ210C-440000-000	Rotating frame	1		224400000009
3	GTHZ210C-400009-000	Steering locating pin	1		224000050015
4	GB5782-86	Bolt M10×60	1		300010030016
5	GB5782-86	Bolt M16×130	40	10.9	300010030065
6	GB93-87	Washer 16	40		300030010004
7	GB97.1-85	Washer 16	40		300030040005
8	GTWZ110-750400-G00	Limit switch	1		227200050006
9	GTHZ210C-400006-000	Switch bracket	1		224400040012
10	GB70-85	Screw M5×20	4		300040020087
11	GB93-87	Washer 5	4		300030010013
12	GB97.1-85	Washer 5	4		300030040012
13	GB5789-86	Bolt M8×20	4		300010080025
14	GB6183-86	Nut M10	4		300020490003
15	GTHZ210C-400004-000	Swivel bracket	1		224000040121
16	GB5789-86	Bolt M10×25	6		300010080001
17	GTHZ210C-400014-000	Limit plate	1		224000030062
18	GTHZ210C-400900-G00	Rotation joint	1		224000000093
19	GB5789-86	Bolt M10×40	4		300010080010

Figure2-2 Counterweight and rotating frame assembly

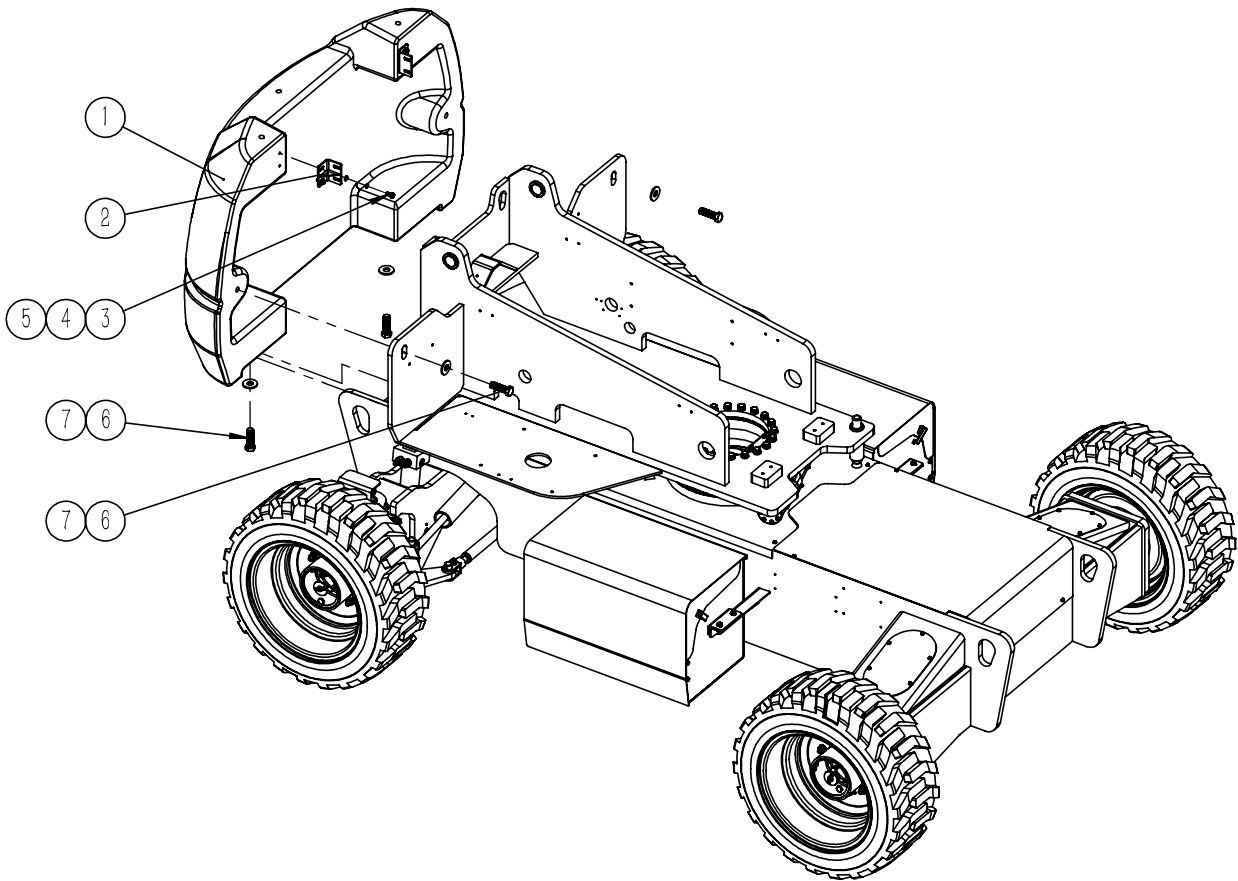


Figure2-2 Counterweight and rotating frame assembly

序号 Item No.	代号 Part No.	名称 Description	数量 Qty	备注或适用车型 Remarks or Series No.	物料码 Code No.
1	GTHZ210C-010000-000	Counterweight	1		220100010007
2	GTHZ210C-401400-000	Bracket A	2		224000000159
3	GB5783-86	BoltM10×25	4	8.8	300010040009
4	GB93-87	Washer10	4		300030010001
5	GB97.1-85	Washer10	4		300030040002
6	GB5783-86	BoltM24×80	4	8.8	300010040247
7	GTHZ120-200600-000	Washer	4		222100050003

Figure2-3 Turntable assembly

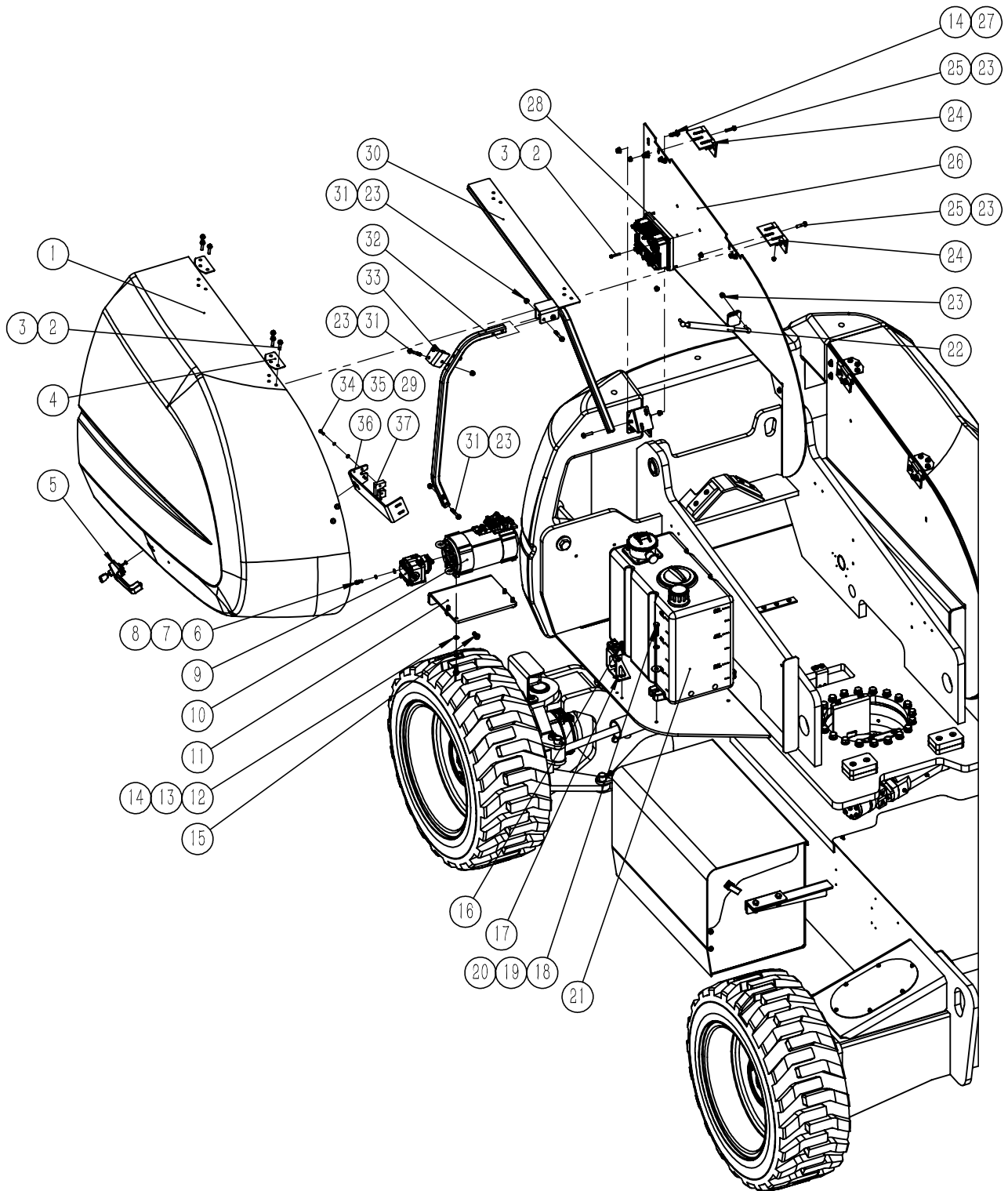


Figure2-3 Turntable assembly

序号 Item No.	代号 Part No.	名称 Description	数量 Qty	备注或适用车型 Remarks or Series No.	物料码 Code No.
1	GTHZ210C-400300-G00	Left cover	1		224000000099
2	GB5789-86	Bolt M8 × 35	6		300010080016
3	GB6183-86	Nut M8	14		300020490004
4	GTHZ210C-400027-000	Plate	2		224000030124
5	140XEN-401400-G00	Handle	1		224000100006
6	GB5783-86	Bolt M8 × 20	2	8.8	300010040173
7	GB93-87	Washer 8	2		300030010015
8	GB97.1-85	Washer8	2		300030040014
9	XSD090-622000-000	Gear pump	1		206100070323
10	XPD090-621000-000	Hydraulic pump motor	1		209100020186
11	GTHZ210C-400008-000	Hydraulic pump motor bracket	1		224000040125
12	GB97.1-85	Washer 10	4		300030040002
13	GB93-87	Washer 10	4		300030010001
14	GB5789-86	Bolt M10 × 30	6	8.8	300010080024
15	GB5789-86	Bolt M10 × 25	2	8.8	300010080001
16	GB5789-86	Bolt M8 × 20	2	8.8	300010080025
17	GTHZ210C-401200-000	Hook	1		224000000097
18	GB5783-86	Bolt M12 × 45	4	8.8	300010040040
19	GB93-87	Washer 12	4		300030010002
20	GB/T 96.1-2002	Big Washer 12	4		300030240005
21	GTHZ210C-610000-G00	Hydraulic tank	1		226100000015
22	GTHZ210C-400026-G01	Air Spring	1		224000000222
23	GB6183-86	Nut M8		With 3	300020490004
24	GTHZ210C-400700-001	Hinge	2		
25	GB5789-86	Bolt M8 × 30	6		300010080005

Figure2-3 Turntable assembly

序号 Item No.	代号 Part No.	名称 Description	数量 Qty	备注或适用车型 Remarks or Series No.	物料码 Code No.
26	GTHZ210C-420000-001	Left bracket	1		224000000178
27	GB6183-86	Nut M10	2		300020490003
28	GTHZ210C-751100-000	Pump Driver assembly	1		227500020006
29	GB97.1-85	Washer 6	2		300030040013
30	GTHZ210C-401500-000	Left bracket	1		224000000160
31	GB5789-86	Bolt M8 × 55		8.8	300010080046
32	HZ210A1-401900-000	Left Elbow	1		224000000215
34	GB70-85	Screw M6 × 20	2	8.8	300040020158
35	GB93-87	Washer 6	2		300030010014
36	GTHZ210C-400017-001	Lock Mounting plate	1		224000040222
37	140XEN-401200-G00	Right Lock	1		224000100004

Figure2-4 Turntable assembly (二)

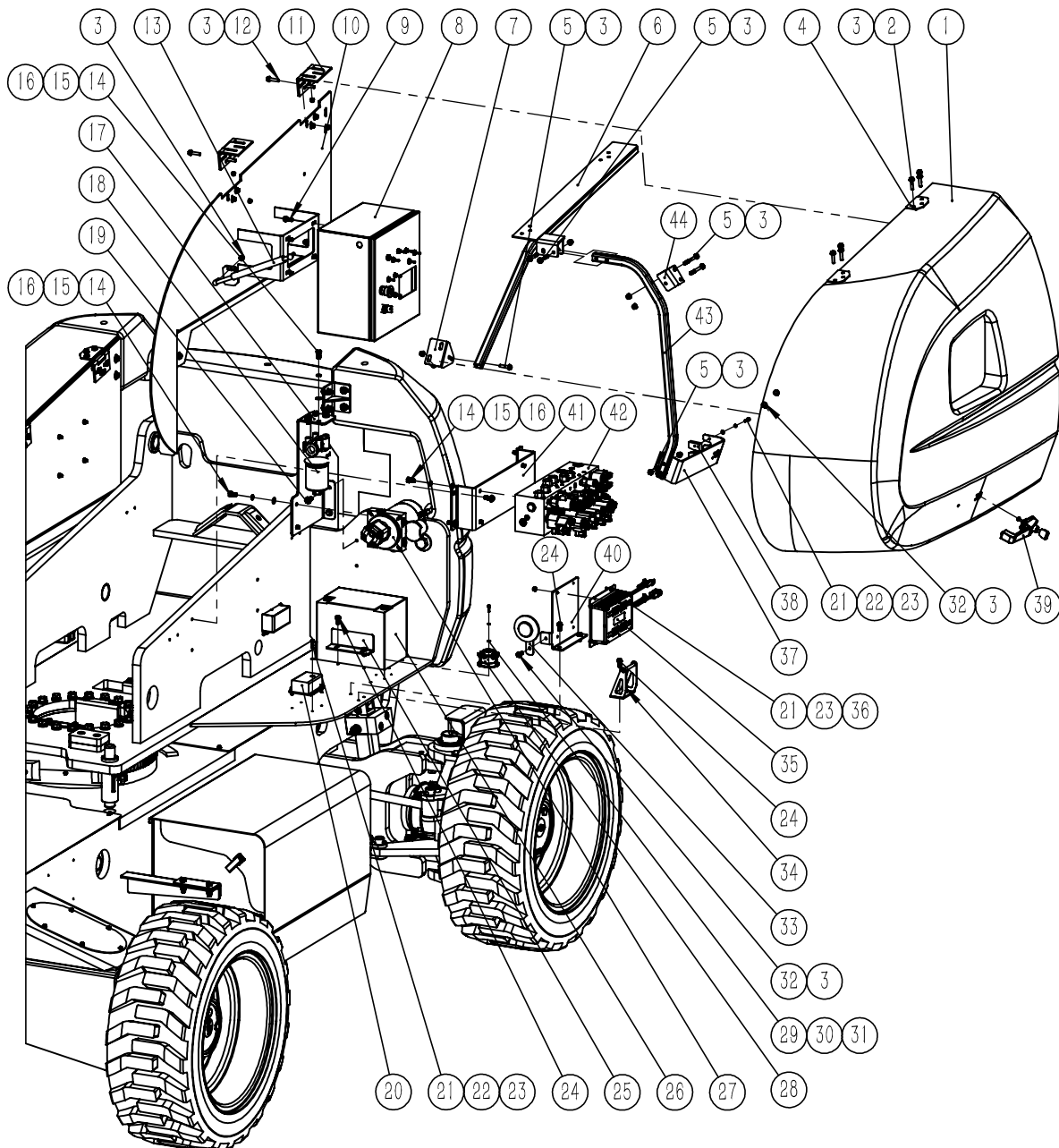


Figure2-4 Turntable assembly (二)

序号 Item No.	代号 Part No.	名称 Description	数量 Qty	备注或适用车型 Remarks or Series No.	物料码 Code No.
1	GTHZ210C-400400-G00	Right cover	1		224000000098
2	GB5789-86	Bolt M8 × 35	6	8.8	300010080016
3	GB6183-86	Nut M8	14		300020490004
4	GTHZ210C-400027-000	Plate	2		224000030124
5	GB5789-86	Bolt M8 × 55		8.8	300010080046
6	GTHZ210C-401600-000	Right plate	1		224000000161
7	GTHZ210C-400024-000	Cover plate A	1		224000040217
8	GTHZ210C-710000-001	Lower controller assembly	1		227500040023
9	GB5789-86	Bolt M8 × 25	4	8.8	300010080026
10	GTHZ210C-430000-001	Right bracket	1		224000000179
11	GTHZ210C-400700-001	Hinge	2		
12	GB5789-86	Bolt M8 × 30	6		300010080005
13	GTHZ210C-400026-G01	Air Spring	1		224000000222
14	GB5783-86	Bolt M10 × 20	10	8.8	300010040005
15	GB93-87	Washer 10	10		300030010001
16	GB97.1-85	Washer 10	10		300030040002
17	GTHZ210C-400007-000	Emergency pump bracket	1	贺德克	226000050027
	HZ210A1-400007-001	Emergency pump bracket	1	黎明	226000050040
18	GTHZ210C-600501-G00	Filter	1	贺德克	226000050027
	HZ210A1-600501-G01	Filter	1	黎明	226000050040
19	GB5789-86	Bolt M10 × 25	2	8.8	300010080001
20	GTHZ210C-751300-000	DCDC	1		227000070035
21	GB70-85	Screw M6 × 20	10	8.8	300040020158
22	GB93-87	Washer 6	6		300030010014
23	GB97.1-85	Washer 6	10		300030040013
24	GB5789-86	Bolt M8 × 20	2	8.8	300010080025
25	GTHZ210C-400011-000	Battery baffle	1		224100020142

Figure2-4 Turntable assembly (二)

序号 Item No.	代号 Part No.	名称 Description	数量 Qty	备注或适用车型 Remarks or Series No.	物料码 Code No.
26	60XEND-760100-G00	Battery	1		227600020003
27	GTHZ210C-650100-G00	Emergency pump	1		226500010005
28	GTHZ210C-750600-G00	Tilt switch	1		227200080005
29	GB70-85	Screw M5 × 16	3	8.8	300040020149
30	GB93-87	Washer 5	3		300030010013
31	GB97.1-85	Washer 5	3		300030040012
32	GB5789-86	Bolt M8 × 25	4	8.8	300010080026
33	N163-700009-000	Horn	1		207900130006
34	GTHZ210C-401200-000	Hook	1		224000000097
35	GTHZ210C-750800-G00	Charger (small)	1		227800010009
36	GB6183-86	Nut M6	4		300020490002
37	GTHZ210C-400016-001	Right Lock Mounting plate	1		224000040221
38	140XEN-401100-G00	Left lock	1		224000100003
39	140XEN-401400-G00	Handle	1		224000100006
40	GTHZ210C-400013-000	Small charger bracket	1		224000040127
41	HZ210AI-400005-001	Block Mounting plate	1		224000040230
42	HZ210AI-640100-G01	Hydraulic Block	1		226400010011
43	HZ210AI-401800-000	Right Elbow	1		224000000214

Chapter 3 Boom

Figure3-1 Assembly of boom and rotating frame

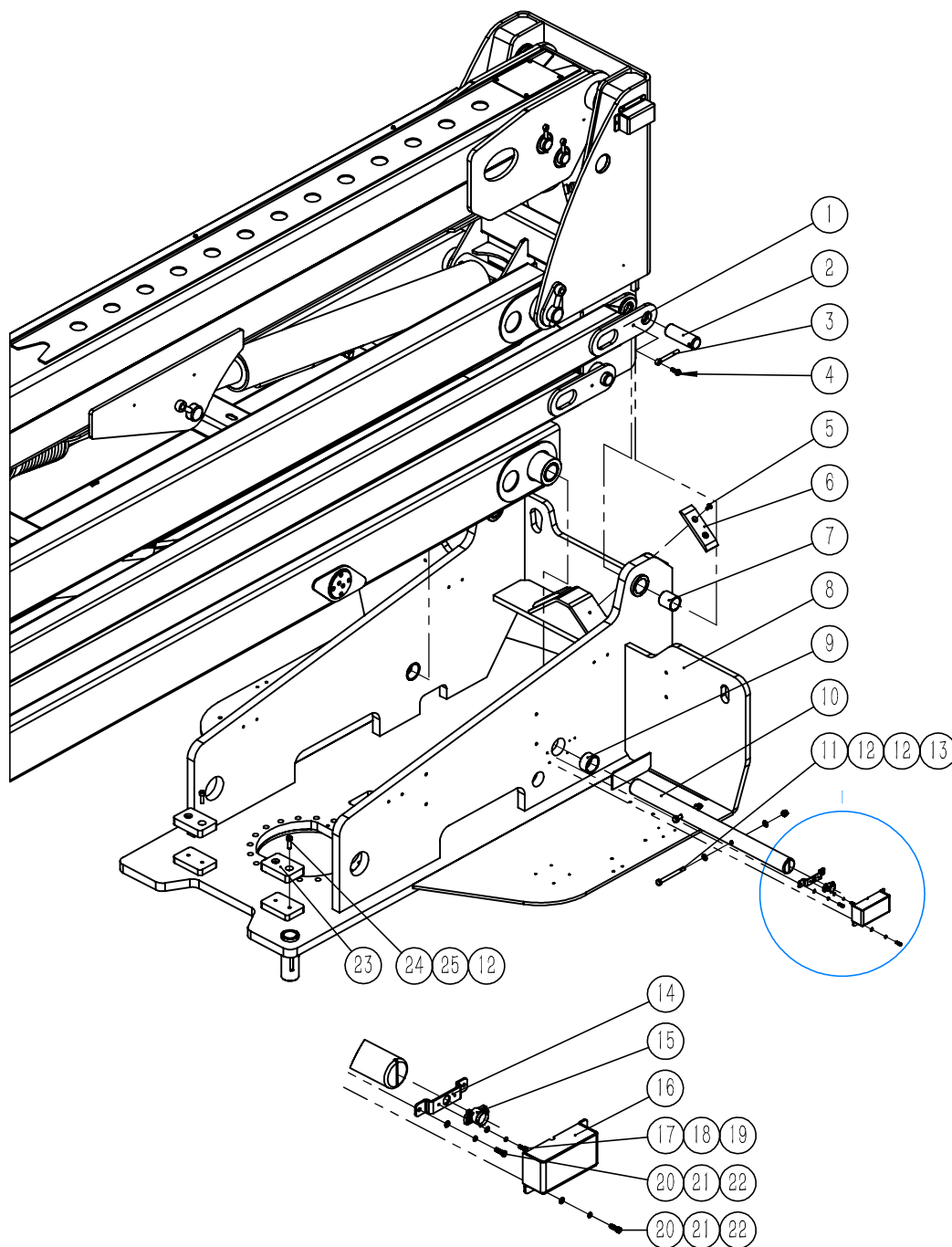


Figure3-1 Assembly of boom and rotating frame

序号 Item No.	代号 Part No.	名称 Description	数量 Qty	备注或适用车型 Remarks or Series No.	物料码 Code No.
1		Boom assembly	1	See the figure for details3-2	
2	GTHZ210C-900104-000	Shaft	2		229000050129
3	78XEN-020002-000	Pin	2		229000110001
4	GB5789-86	Bolt M8 × 25	2		300010080026
5	GB/T70.3-2000	Screw M8 × 20	4	8.8	300040040002
6	GTHZ210C-400015-000	Upper Cushion block	2		224000110005
7	CT-514050-G00	Fibre Busing	2		229000070026
8	GTHZ210C-440000-000	Rotating frame	1		224400000009
9	CT-515030-G00	Fibre Busing	2		224000080011
10	HZ210AI-900301-000	Shaft	1		229000050191
11	GB5782-86	Bolt M10 × 110	2	8.8	300010030003
12	GB97.1-85	Washer 10	8		300030040002
13	GB889-86	Nut M10	2	8	300020150003
14	GTHZ210C-400010-000	Potentiometer Bracket	1		224000040126
15	60XEND-741200-G01	Potentiometer	1		227400010013
16	GTHZ210C-400800-000	Potentiometer cover	1		224000000092
17	GB5783-86	Bolt M4 × 12	2	8.8	300010040128
18	GB93-87	Washer 4	2		300030010012
19	GB97.1-85	Washer 4	2		300030040011
20	GB5783-86	Bolt M5 × 16	5		300010040138
21	GB93-87	Washer 5	5		300030010013
22	GB97.1-85	Washer 5	5		300030040012
23	GTHZ210C-400012-000	Cushion block	2		224000110004
24	GB70-85	Screw M10 × 30	4		300040020075
25	GB93-87	Washer 10	4		300030010001

Figure3-2 Boom assembly

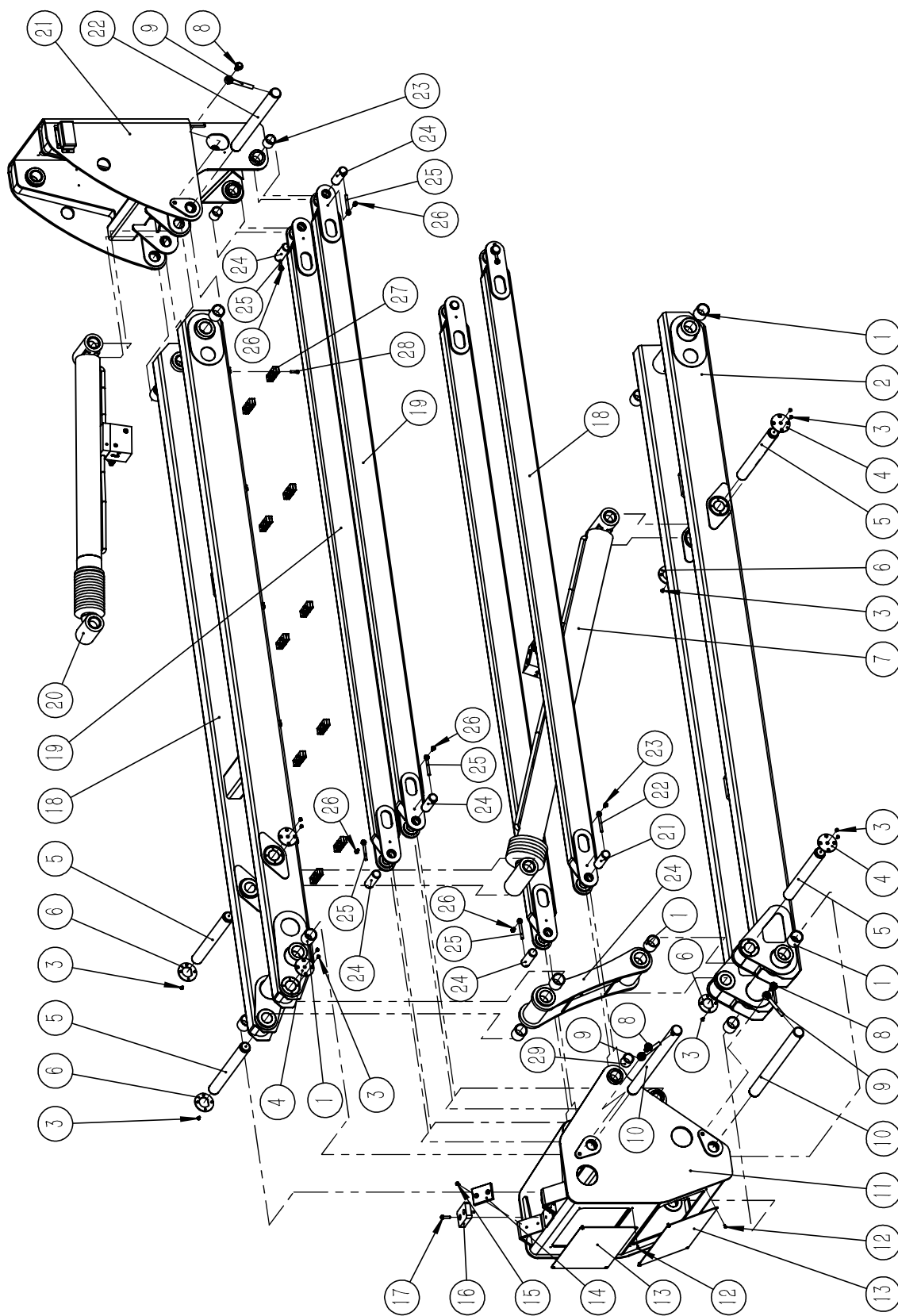


Figure 3-2 Boom assembly

序号 Item No.	代号 Part No.	名称 Description	数量 Qty	备注或适用车型 Remarks or Series No.	物料码 Code No.
1	CT-515060-G00	Fibre Busing	12		229000070025
2	HZ210A1-911100-000	Lower secondary boom assembly	1		229100000237
3	GB/T70.3-2008	Screw M6 × 16	36	8.8	300040040026
4	GTHZ210C-900001-000	Cap	4		229000030095
5	GTHZ210C-900202-000	Shaft	4		229000050130
6	GTHZ210C-900011-000	Cap	4		229000030138
7		Lower secondary cylinder assembly	1	See the figure for details5-4	
8	GB5789-86	Bolt M16 × 35	2	8.8	300010080013
9	GTHZ210C-200007-000	Shaft 16120	2		222100030027
10	GTHZ210C-900101-000	Shaft	2		229000050131
11	GTHZ210C-915100-000	Mid pivot	1		229100000191
12	GB/T70.2-2000	Screw M6 × 12	8		300040030021
13	GTHZ210C-915001-000	Mid pivot Plate	2		229100030183
14	GTHZ210C-915002-000	Guide slider	2		229000090031
15	GB/T70.3-2000	Screw M8 × 20	4	8.8	300040040002
16	GTHZ210C-400012-000	Cushion block	1		224000110004
17	GB5789-86	Bolt M8 × 35	2	8.8	300010080016
18	HZ210A1-912100-000	Mid boom	1		229100000236
19	GTHZ210C-920100-000	Pull rod	2		229100000200
20		Upper secondary boom cylinder	1	See the figure for details5-5	
21	GTHZ210C-916100-000	Upper pivot	1		229000000075
22	GTHZ210C-900102-000	Shaft	1		229000050136
23	CT-514050-G00	Fibre Busing	4		229000070026
24	GTHZ210C-900104-000	Shaft	4		229000050129
25	TZ010-110090-000	Lock pin	4		229000110011

Figure 3-2 Boom assembly

序号 Item No.	代号 Part No.	名称 Description	数量 Qty	备注或适用车型 Remarks or Series No.	物料码 Code No.
26	GB5789-86	Bolt M8 × 20	4	8.8	300010080025
27	GTHZ210C-600201-G00	16 Double clamp	20		226000020005
28	GB70-85	Screw M8 × 30	20		300040020100
29	CT-514050-G00	Fibre Busing	2		229000070026

Figure3—3 Upper pivot and upper secondary boom assembly

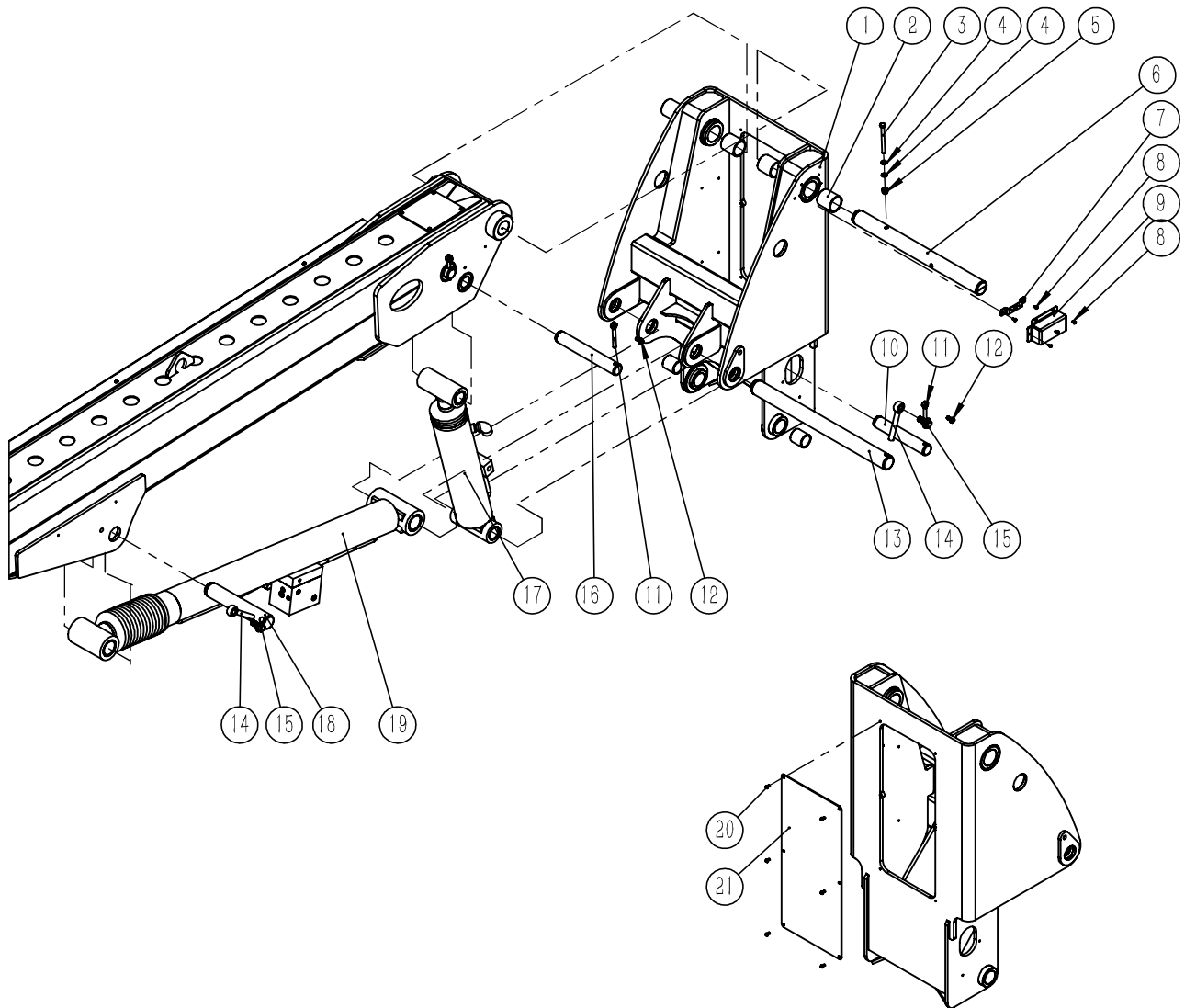


Figure3-3 Upper pivot and upper secondary boom assembly

序号 Item No.	代号 Part No.	名称 Description	数量 Qty	备注或适用车型 Remarks or Series No.	物料码 Code No.
1	GTHZ210C-916100-000	Upper pivot	1		229000000075
2	CT-515060-G00	Fibre Busing	4		229000070025
3	GB5782-86	Bolt M10 × 110	1	8.8	300010030003
4	GB97.1-85	Washer 10	2		300030040002
5	GB6183-86	Nut M10	1	8	300020490003
6	HZ210A1-900302-000	Shaft	1		229000050192
7	GTHZ210C-400010-000	Potentiometer Bracket	1		224000040126
8	GB/T70.2-2000	Screw M5 × 10	5	8.8	300040030022
9	GTHZ210C-400800-000	Potentiometer cover	1		224000000092
10	GTHZ210C-900109-000	Shaft	1		229000050144
11	TZ010-110090-000	Lock pin	2		229000110011
12	GB/T5789-1986	Bolt M8 × 20	2	8.8	300010080025
13	GTHZ210C-900102-000	Shaft	1		229000050136
14	GTHZ210C-200007-000	Shaft 16120	2		222100030027
15	GGB/T5789-1986	Bolt M16 × 35	2	8.8	300010080013
16	GTHZ210C-900103-000	Shaft	1		229000050134
17	GTHZ210C-620600-000	Lower leveling cylinder	1		226200050003
18	GTHZ210C-900106-000	Shaft	1		229000050132
19		Upper secondary boom cylinder assembly	1	See the figure for details5-5	
20	GTHZ210C-916001-000	Upper pivot Plate	1		229100030191
21	GB/T70.2-2000	Screw M6 × 12	6	8.8	300040030021

Figure 3-4 Upper secondary boom and telescopic boom assembly

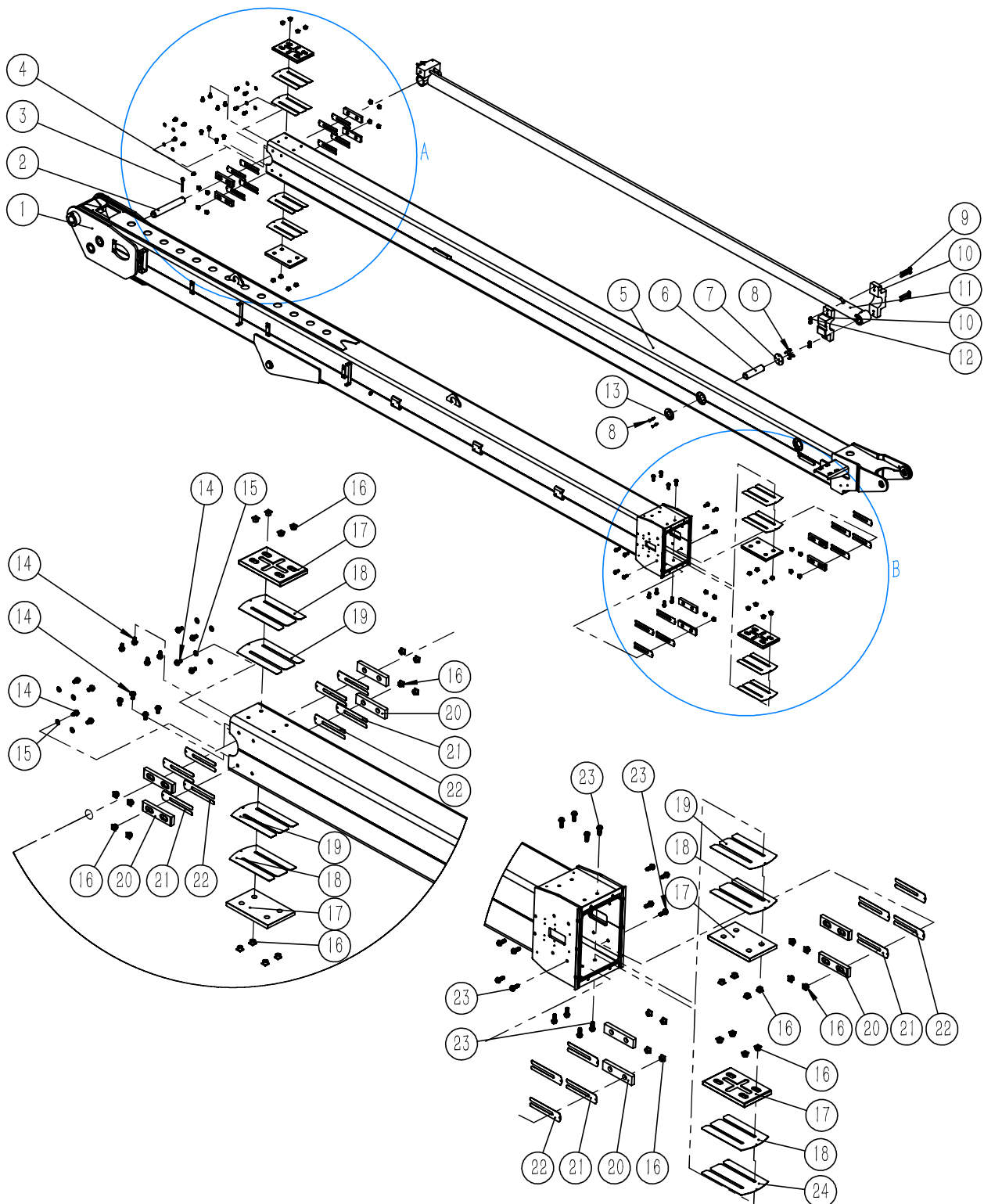


Figure3-4 Upper secondary boom and telescopic boom assembly

序号 Item No.	代号 Part No.	名称 Description	数量 Qty	备注或适用车型 Remarks or Series No.	物料码 Code No.
1	HZ210A1-913100-000	Upper secondary boom assembly	1		229100000267
2	GTHZ210C-900103-000	Shaft	1		229000050134
3	TZ010-110090-000	Lock pin	1		229000110011
4	G005789-008020-00	Bolt M8 × 20	1	8.8	300010080025
5	HZ210A1-914100-000	Telescopic boom assembly	1		229100000269
6	GTHZ210C-900201-000	Shaft	1		229000050135
7	GTHZ210C-900002-000	Small Cap	1		229000030096
8	GT070P3-006016-02	Screw M6 × 16	9	8.8	300040040026
9	G005789-010080-01	Bolt M10 × 80	4		300010080029
10	GTHZ210C-900003-000	Cylinder support block	2		229000090034
11		Telescopic boom cylinder assembly	1	See the figure for details5-6	
12	G006183-000010-00	Nut M10	4	8	300020490003
13	GTHZ210C-900012-000	Cap	1		229000030139
14	G005789-010020-00	Bolt M10 × 20	16	8.8	300010080025
15	GB97.1-85	Washer 10	8		300030040002
16	GTHZ210C-913302-000	Square Nut	32		229000110008
17	GTHZ210C-913401-000	Upper and lower sliders	4		229000090033
18	GTHZ210C-900009-000	Big shim	4		229000030092
19	GTHZ210C-900008-000	Big Shim	4		229000030089
20	GTHZ210C-913301-000	Side slider	8		229000090032
21	GTHZ210C-900006-000	Small shim	8		229000030088
22	GTHZ210C-900007-000	Small Shim	8		229000030093
23	G005789-010030-00	Bolt M10 × 30	16	8.8	300010080024
24	GTHZ210C-900010-000	Shim	2		229000030133

Figure 3-5 Upper secondary boom and telescopic boom assembly (二)

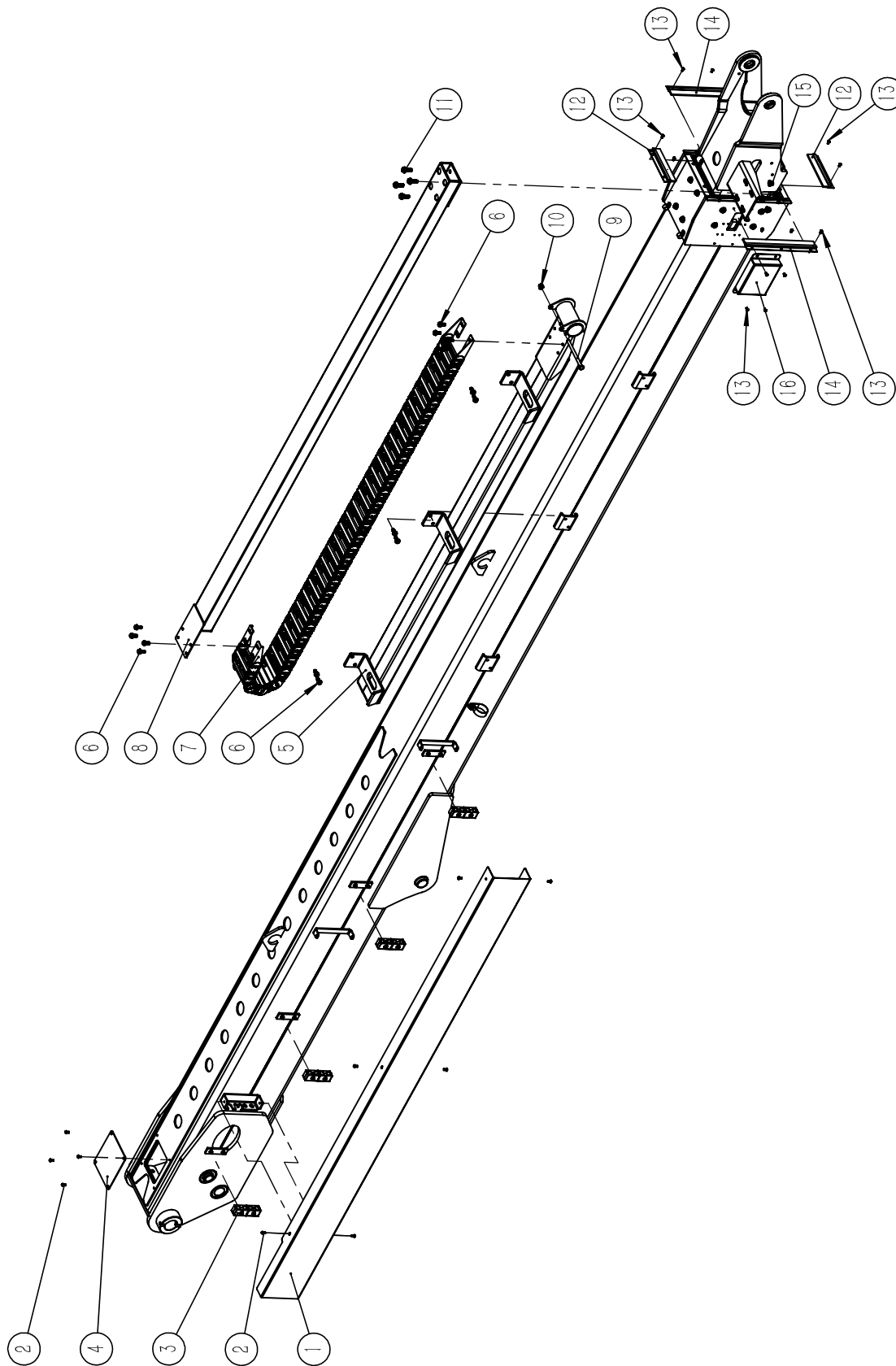


Figure3-5 Upper secondary boom and telescopic boom assembly (二)

序号 Item No.	代号 Part No.	名称 Description	数量 Qty	备注或适用车型 Remarks or Series No.	物料码 Code No.
1	GTHZ210C-913002-000	Upper secondary boom cover	1		229100040167
2	GB/T70.2-2000	Screw M6×12	10	8.8	300040030021
3	GTHZ210C-600208-G00	13.5Double clamp	8		226000020013
4	GTHZ210C-913001-000	Upper secondary boom Plate	1		229100030219
5	GTHZ210C-913200-000	Piping weldment	1		229000000082
6	GB/T5789-1986	Bolt M8×20	14	8.8	300010080025
7	GTHZ210C-900100-G00	Chain	1		226000050029
8	GTHZ210C-900500-000	Piping	1		229000000079
9	GB5782-86	Bolt M10×140	1	8.8	300010030006
10	GB889-86	Nut M10	1	8	300020150003
11	GB/T5789-1986	Bolt M10×30	4	8.8	300010080024
12	GTHZ210C-913005-000	Brush	2		229000000081
13	GB/T70.2-2000	Screw M5×10	14	8.8	300040030022
14	GTHZ210C-913004-000	Brush	2		229000000080
15	GB6183-86	Nut M10	4	8	300020490003

Figure3-6 Jib and lift boom assembly

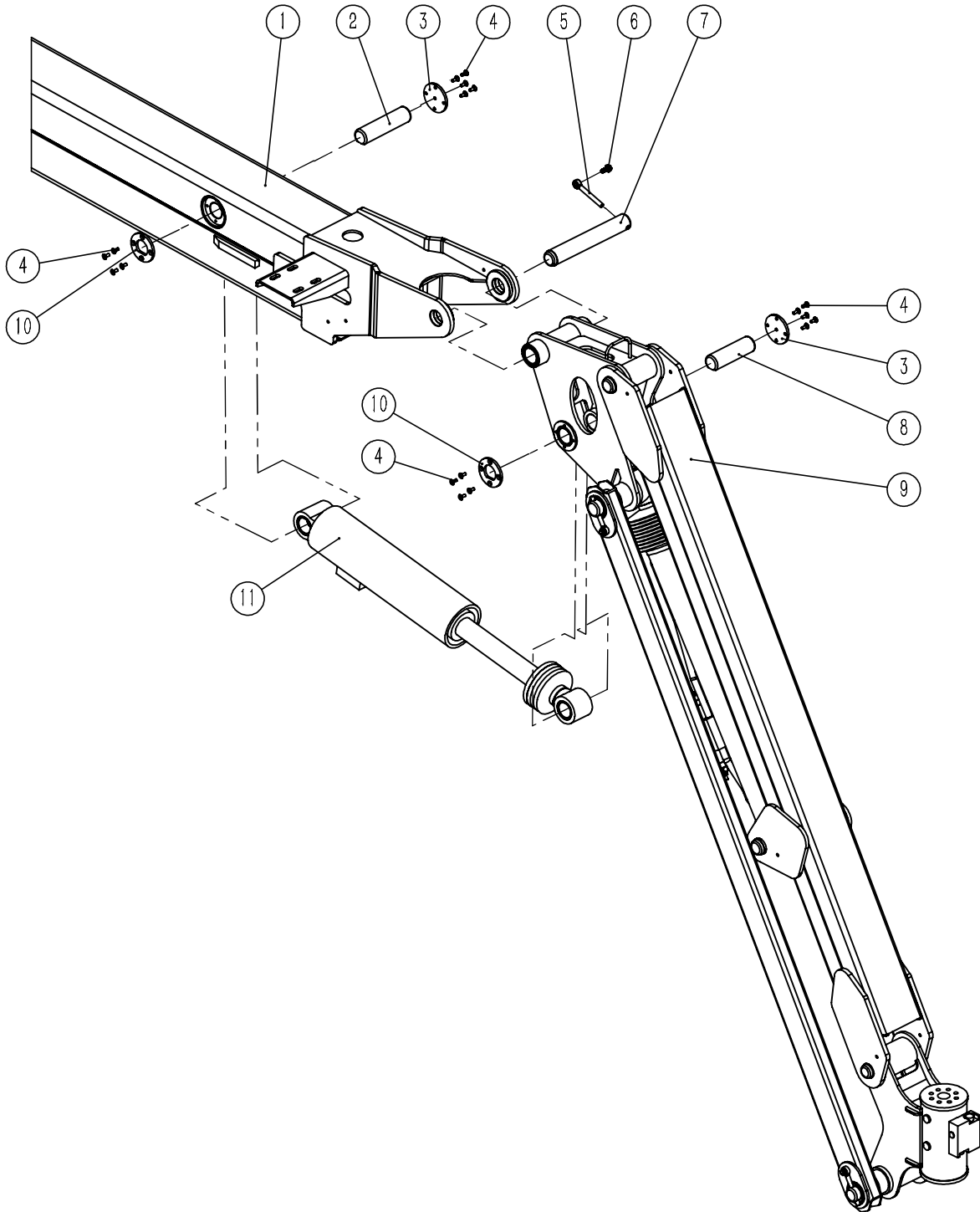


Figure3-6 Jib and lift boom assembly

序号 Item No.	代号 Part No.	名称 Description	数量 Qty	备注或适用车型 Remarks or Series No.	物料码 Code No.
1		Primary boom Assembly	1	See the figure for details3-4、3-5	
2	GTHZ210C-900201-000	Shaft	1		229000050135
3	GTHZ210C-900002-000	Cap	2		229000030096
4	GT070P3-006016-02	Screw M6 × 16	18	8.8	300040040026
5	TZ010-110090-000	Lock pin	1		229000110011
6	G005789-008020-00	Bolt M8 × 20	1	8.8	300010080025
7	GTHZ210C-900105-000	Shaft	1		229000050138
8	GTHZ210C-900203-000	Shaft	2		229000050137
9		Jib Assembly	1	See the figure for details3-7	
10	GTHZ210C-900012-000	Cap	2		229000030139
11		Leveling cylinder	1	See the figure for details5-7	

Figure3-7 Jib Assembly

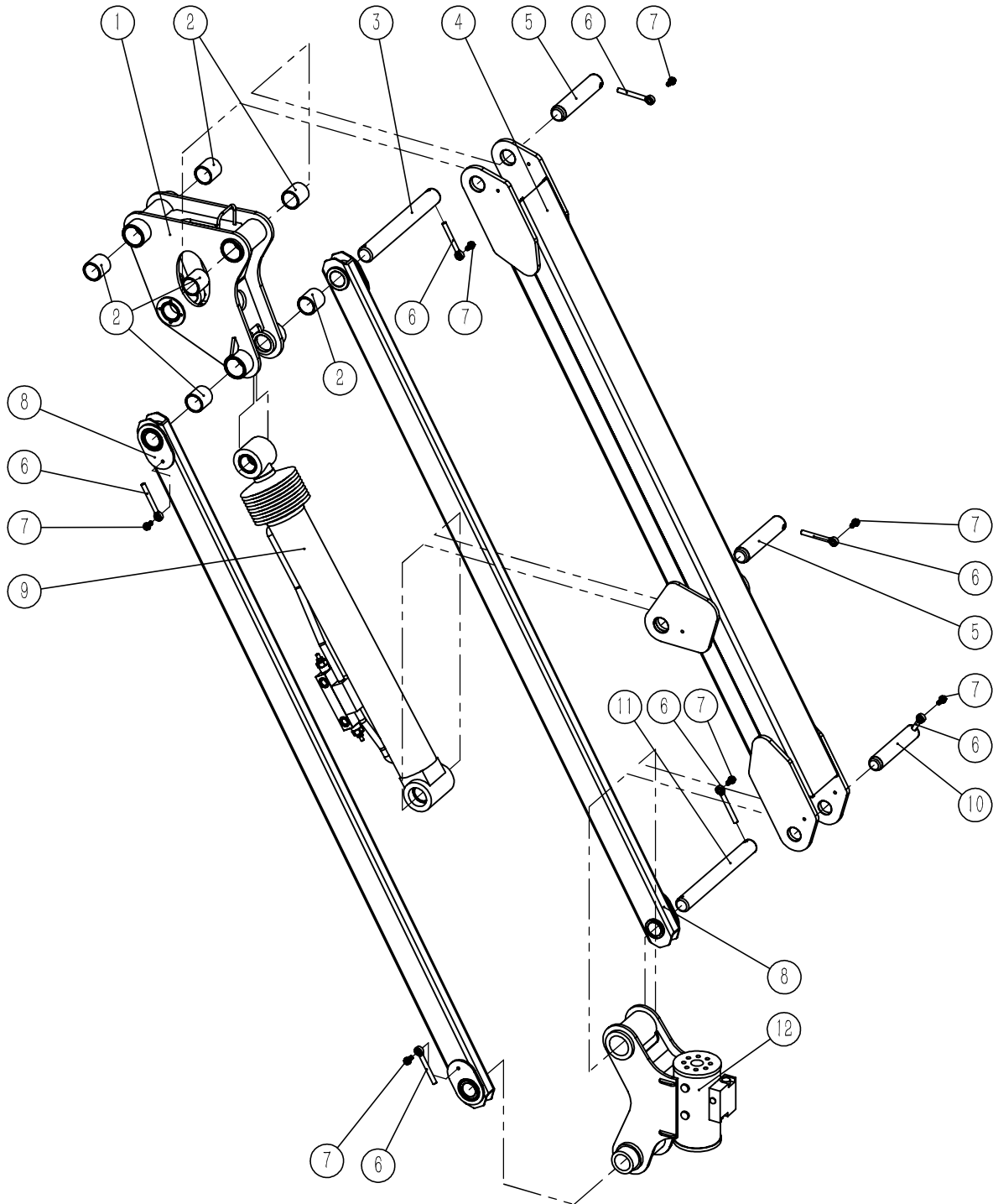


Figure3-7 Jib Assembly

序号 Item No.	代号 Part No.	名称 Description	数量 Qty	备注或适用车型 Remarks or Series No.	物料码 Code No.
1	HZ210AI-917100-000	Swing joint weldment	1		229100000265
2	CT-514050-G00	Fibre Busing	6		229000070026
3	GTHZ210C-900401-000	Shaft	1		229000050139
4	HZ210AI-918100-000	Jib assembly	1		229100000262
5	GTHZ210C-900107-000	Shaft	2		229000050142
6	TZ010-110090-000	Lock pin	7		229000110011
7	G005789-008020-00	Bolt M8 x 20	7	8.8	300010080025
8	GTHZ210C-920200-000	Connecting rod	2		229100000194
9		Jib cylinder	1	See the figure for details5-8	
10	GTHZ210C-900108-000	Shaft	1		229000050140
11	GTHZ210C-900402-000	Shaft	1		229000050141
12	GTHZ210C-621000-000	Rotary cylinder	1		226200070011

Chapter 4 Working platform

Figure4-1 Working platform and jib Assembly

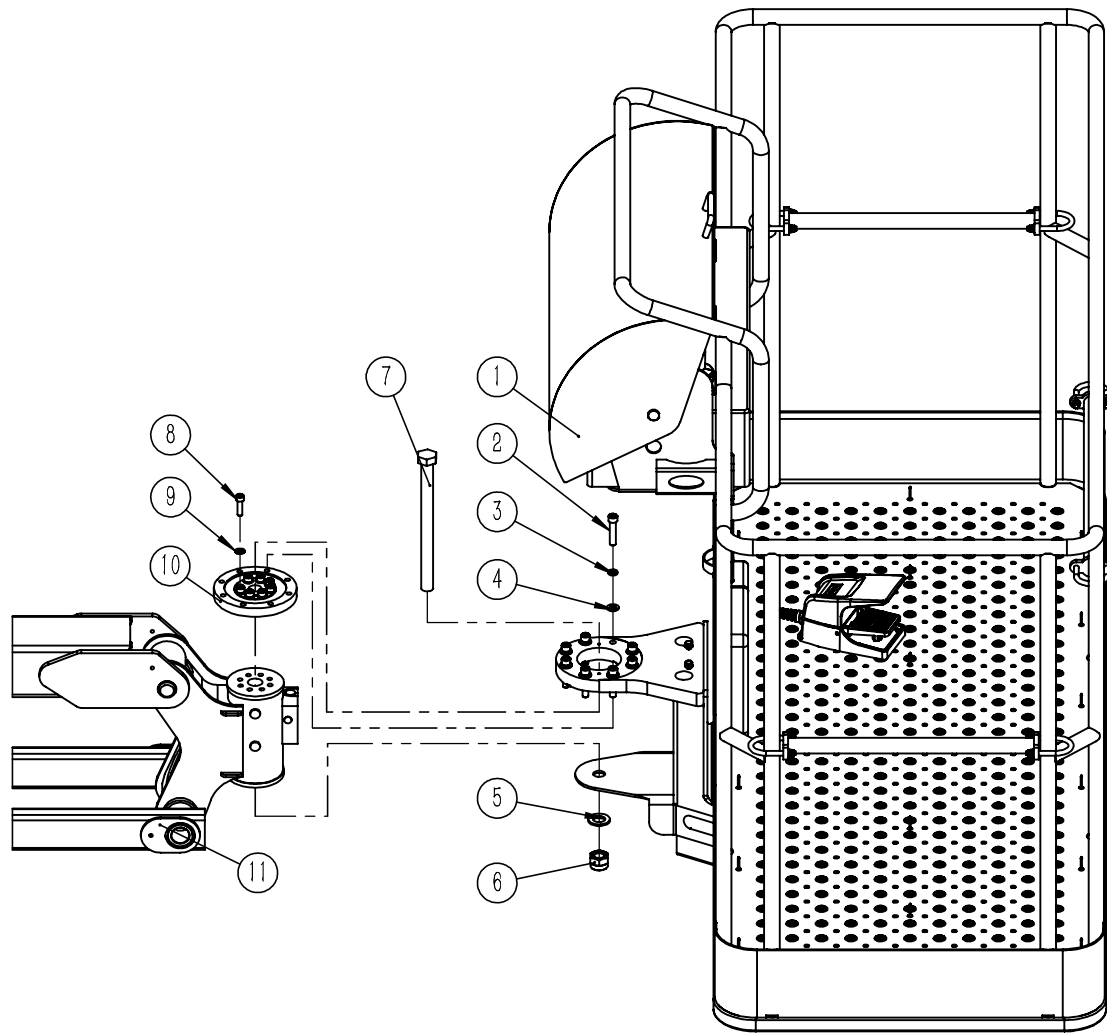


Figure4-1 Working platform and jib Assembly

序号 Item No.	代号 Part No.	名称 Description	数量 Qty	备注或适用车型 Remarks or Series No.	物料码 Code No.
1		Working platform Assembly	1	See the figure for details4-2	
2	GB70-85	Screw M12×55	8	8.8	300040020105
3	GB93-87	Washer 12	8		300030010002
4	GB97.1-85	Washer 12	8		300030040003
5	GB97.1-85	Washer 24	1		300030040007
6	GB889-86	Nut M24	1		300020150002
7	GTHZ210C-751000-G00	Bolt M24×300	1	10.9	227000070025
8	GB70-85	Screw M10×35	8	8.8	300040020129
9	GB97.1-85	Washer 12	8		300030040002
10	GTHZ210C-750400-G00	The weighing sensor	1		227400050002
11		Jib Assembly	1	See the figure for details3-6	

Figure4-2 Working platform Assembly

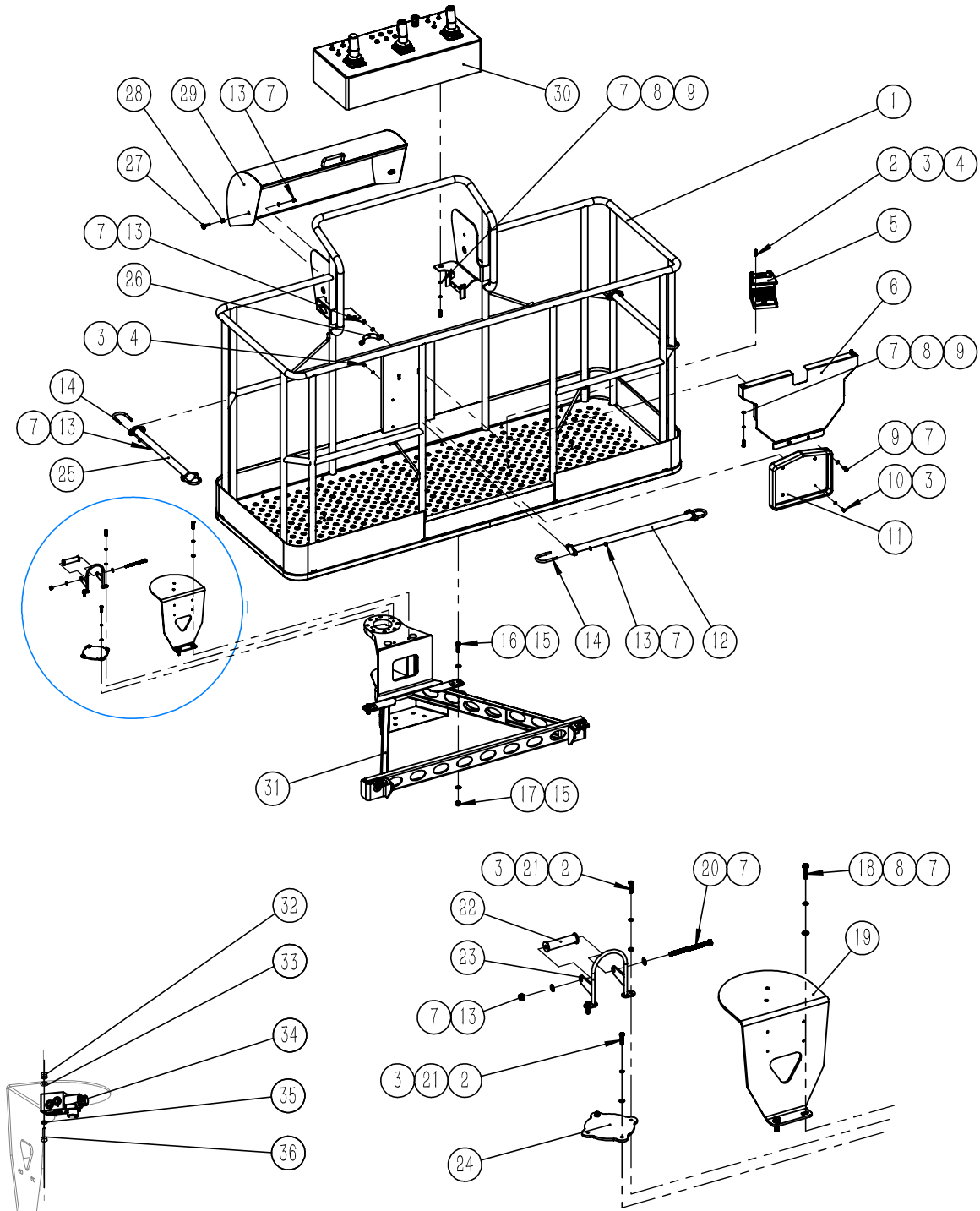


Figure 4-2 Working platform Assembly

序号 Item No.	代号 Part No.	名称 Description	数量 Qty	备注或适用车型 Remarks or Series No.	物料码 Code No.
1	GTHZ210C-810100-000	Platform	1		228100000078
2	GB5783-86	Bolt M6 × 25	9	8.8	300010040153
3	GB97.1-85	Washer 6	20		300030040013
4	GB889-86	Nut M6	8	8	300020150005
5	GTHZ210C-750300-G00	Foot switch	1		227200080004
6	GTHZ210C-810003-000	Notice board	1		228100030181
7	GB97.1-85	Washer8	26	8	300030040014
8	GB93-87	Washer8	6		300030010015
9	GB5783-86	M8 × 25	6	8.8	300010040177
10	GB5783-86	BoltM6 × 16	1	8.8	300010040148
11	78XEN-820100-G00	File box	1		228000000009
12	GTHZ210C-810200-000	Movable rod welding body	1		228100000080
13	GB889-86	Nut M8	17	8	300020150004
14	GTHZ210C-810002-000	Movable rod U-ring	6		228100070016
15	GB97.1-85	Washer12	8		300030040003
16	GB5783-86	BoltM12 × 40	4	8.8	300010040037
17	GB889-86	M12	4	8	300020150006
18	GB5783-86	Bolt M8 × 30	2	8.8	300010040178
19	GTHZ210C-810008-000	Block Mounting plate	1		228100030182
20	GB5783-86	Bolt M8 × 110	1	8.8	300010040164
21	GB93-87	Washer 6	4		300030010014
22	GTHZ210C-810009-000	Nylon roller	1		228100060058
23	GTHZ210C-810600-000	Routing ring	1		228100000083
24	GTHZ210C-810007-000	Plate	1		228100010094
25	GTHZ210C-810500-000	Movable rod welding body	2		228100000082

Figure 4-2 Working platform Assembly

序号 Item No.	代号 Part No.	名称 Description	数量 Qty	备注或适用车型 Remarks or Series No.	物料码 Code No.
26	GTHZ210C-810006-000	Semicircle clamp	1		228000020016
27	GTHZ210C-810004-000	Shaft	2		228100070017
28	GTHZ210C-810005-000	Busing	2		228000050006
29	GTHZ210C-810300-000	Control box cover	1		228100000081
30	GTHZ210C-720000-001	Upper control Assembly	1		227500040024
31	GTHZ210C-810400-000	Welding body of platform base	1		228100000079
32	GB70-85	Bolt M5 × 50	2		300040020123
33	GB93-87	Spring Washer5	2		300030010013
34	HZ210A1-640300-G01	Directional valve	1		226400020007
35	GB97.1-85	Flat Washer5	2		300030040012
36	GB889-86	Nut M5	2		300020150018

Chapter 5 Hydraulic system

Figure5-1 Hydraulic Circuit

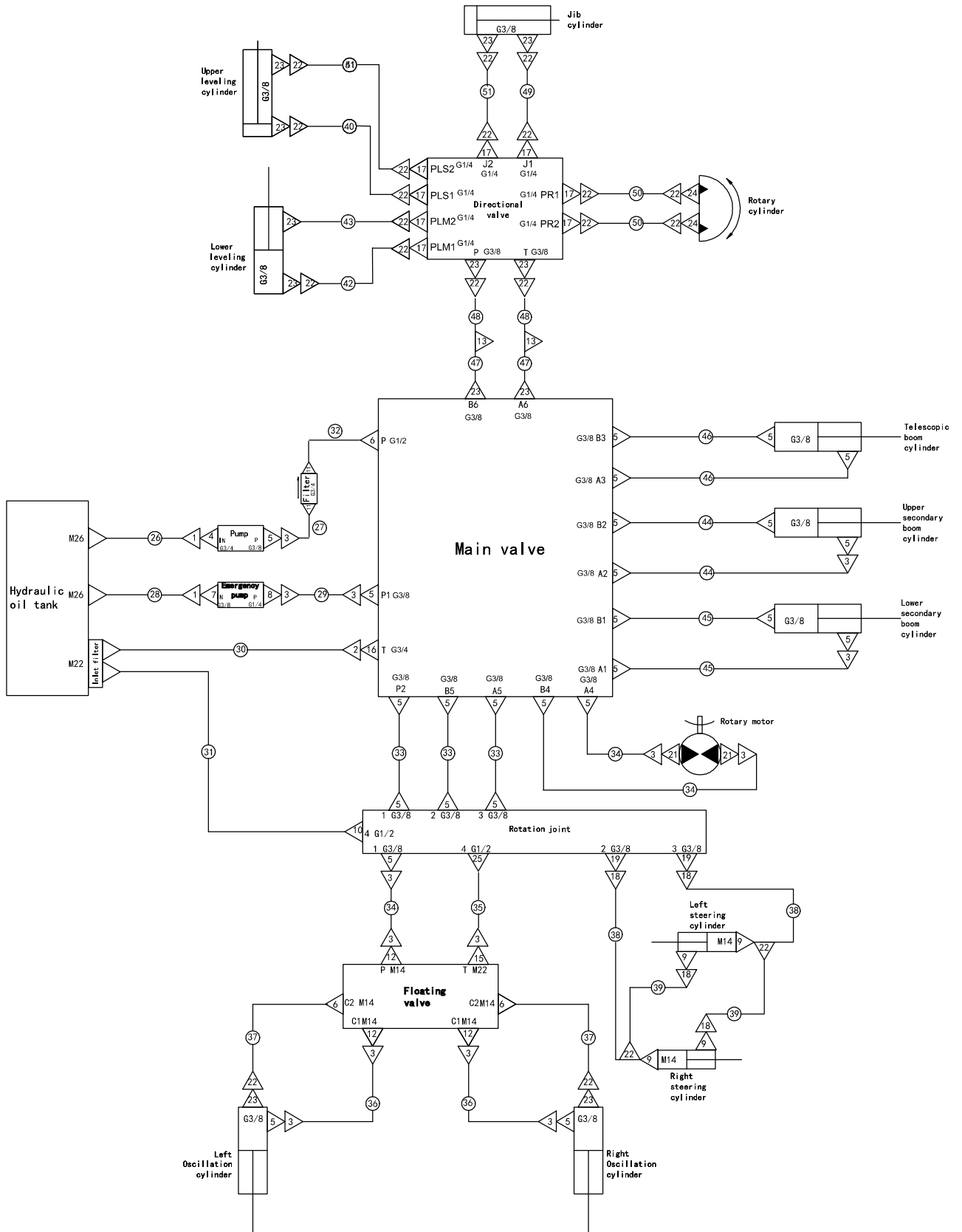


Figure 5-1 Hydraulic Circuit

序号 Item No.	代号 Part No.	名称 Description	数量 Qty	备注或适用车型 Remarks or Series No.	物料码 Code No.
1	JT-202626-G01	Connection	2		226000040084
2	JT-202222-G01	Connection	1		226000040075
3	JT-201818-G01	Connection	17		226000040074
4	JT-111226-G01	Connection	1		226000040055
5	JT-110618-G00	Connection	25		226300030006
6	JT-101414-G01	Connection	2		226000040126
7	JT-110626-G01	Connection	1		226000040069
8	JT-110418-G01	Connection	1		226000040112
9	JT-101416-G01	Connection	4		226000040120
10	JT-110822-G01	Connection	1		226000040109
11	JT-111218-G01	Connection	2		226000040071
12	JT-101418-G01	Connection	3		226000040119
13	JT-131414-G01	Plug	2		226000040117
14	JT-101818-G01	Connection			226000040066
15	JT-102218-G00	Connection	1		226000040091
16	JT-111222-G00	Connection	1		226000050036
17	JT-110414-G01	Connection	8		226000040081
18	JT-201616-G01	Connection	4		226000040073
19	JT-110616-G01	One way restrictor valve	2		226000040067
20	JT-301616-G01	Tee coupling	2		226000040078
21	JT-131418-G01	Connection	2		226000040079
22	JT-201414-G01	Connection	19		226000040082
23	JT-110614-G00	Connection	12		226000040040
24	JT-110714-G01	Connection	2		226000040118
25	JT-110818-G00	Connection	2		226000040089
26	GTHZ210C-630101-000	High pressure hose	1		226300010145

Figure 5—1 Hydraulic Circuit

序号 Item No.	代号 Part No.	名称 Description	数量 Qty	备注或适用车型 Remarks or Series No.	物料码 Code No.
27	HZ210AI-630102-001	High pressure hose	1		226300010249
28	GTHZ210C-630103-000	High pressure hose	1		226300010142
29	HZ210AI-630104-001	High pressure hose	1		226300010251
30	HZ210AI-630105-001	High pressure hose	1		226300010252
31	GTHZ210C-630106-000	High pressure hose	1		226300010143
32	HZ210AI-630107-000	High pressure hose	1		226300010300
33	HZ210AI-630109-001	High pressure hose	3		226300010253
34	HZ210AI-630110-001	High pressure hose	3		226300010254
35	GTHZ210C-630111-000	High pressure hose	1		226300010151
36	HZ210AI-630112-000	High pressure hose	2		226300010301
37	HZ210AI-630113-000	High pressure hose	2		226300010299
38	GTHZ210C-630125-000	High pressure hose	2		226300010167
39	GTHZ210C-630114-000	High pressure hose	2		226300010138
40	HZ210AI-630115-000	High pressure hose	1		226300010302
41	HZ210AI-630116-000	High pressure hose	1		226300010303
42	HZ210AI-630117-001	High pressure hose	1		226300010260
43	HZ210AI-630118-001	High pressure hose	1		226300010261
44	HZ210AI-630119-001	High pressure hose	2		226300010256
45	HZ210AI-630120-001	High pressure hose	2		226300010255
46	HZ210AI-630121-001	High pressure hose	2		226300010257
47	HZ210AI-630126-001	High pressure hose	2		226300010258
48	GTHZ210C-630122-000	High pressure hose	2		226300010162
49	HZ210AI-630123-000	High pressure hose	1		226300010304
50	HZ210AI-630124-000	High pressure hose	2		226300010306
51	HZ210AI-630127-000	High pressure hose	1		226300010305

Figure 5-2 Tank Assembly

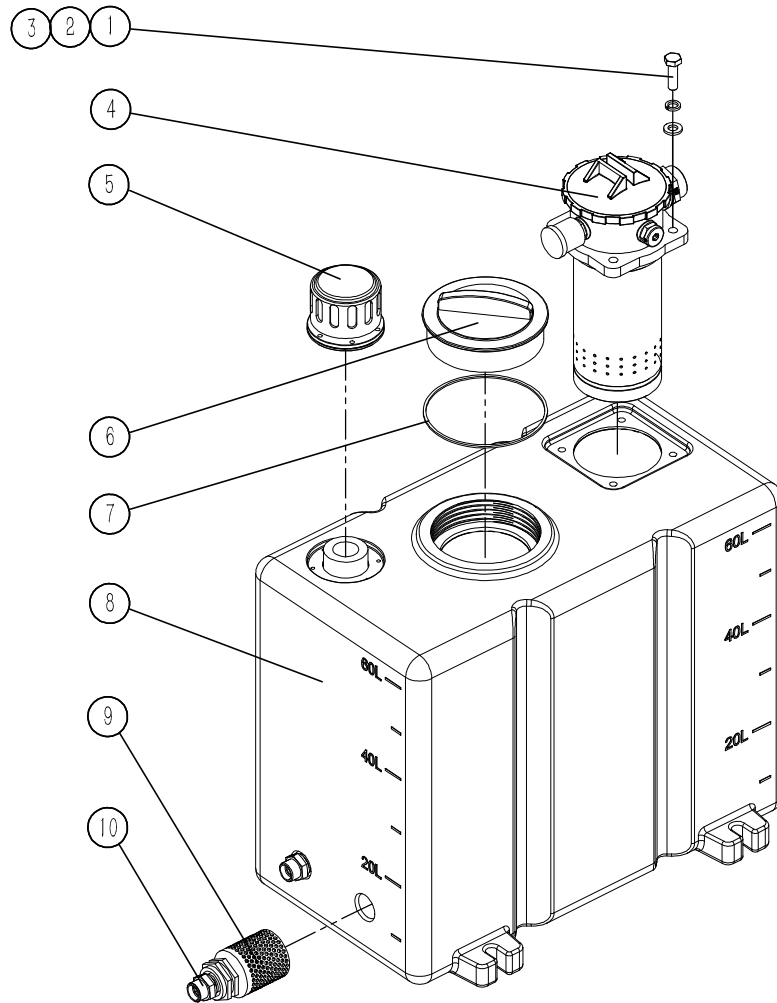


Figure 5-2 Tank Assembly

序号 Item No.	代号 Part No.	名称 Description	数量 Qty	备注或适用车型 Remarks or Series No.	物料码 Code No.
1	GB70-85	Bolt M8 × 20	4		300040020097
2	GB93-87	Washer 8	4		300030010015
3	GB97.1-85	Washer 8	4		300030040014
4	GTHZ210C-610200-G00	Inlet Filter	1		
5	GTHZ210C-610300-G00	Air Filter	1		
6	GTHZ210C-610400-G00	Cover	1		
7	GTHZ210C-610001-G00	Seal	1		
8	GTHZ210C-610100-G00	Tank	1		
9	GTHZ210C-610500-G00	Filter	2		
10	GTHZ210C-610002-G00	Connection	2		

Figure5-3 Oscillation cylinder assembly

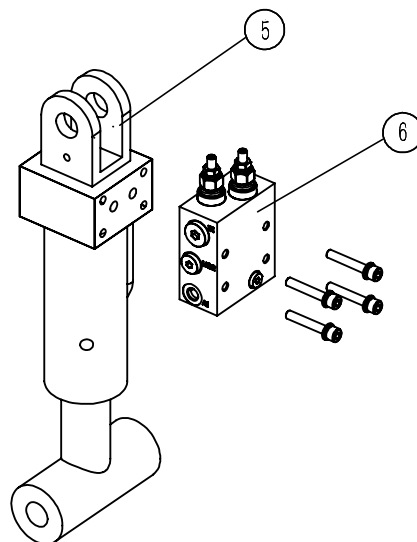
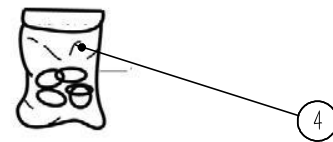
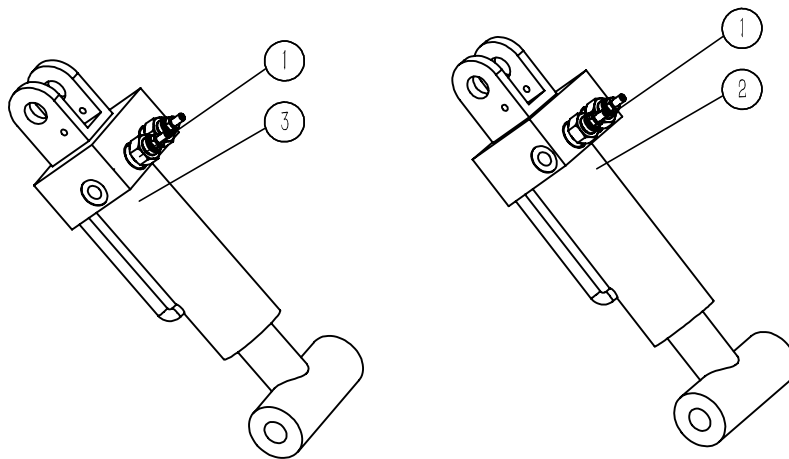


Figure 5-3 Oscillation cylinder assembly

序号 Item No.	代号 Part No.	名称 Description	数量 Qty	备注或适用车型 Remarks or Series No.	物料码 Code No.
1	HZ210Al-640710-G01	Oscillation valve	4		226400080007
2	GTHZ210C-620200-000	Left Oscillation cylinder	1		
3	GTHZ210C-620200-001	Right Oscillation cylinder	1		
4	GTHZ210C-620210-000	Seal assembly	1		
5	HZ210Al-620200-000	Oscillation cylinder	2	2022.11.29	226200070024
6	HZ210Al-640700-G00	Valve	2	2022.11.29	226400040019

Figure 5-4 Lower secondary boom cylinder

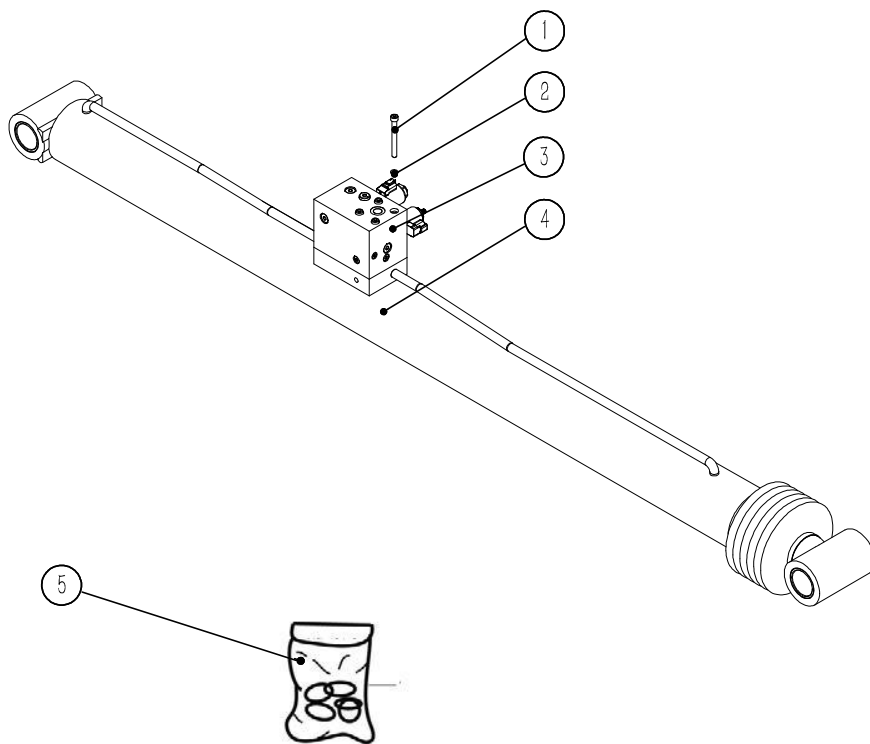


Figure 5-4 Lower secondary boom cylinder

序号 Item No.	代号 Part No.	名称 Description	数量 Qty	备注或适用车型 Remarks or Series No.	物料码 Code No.
1	GB70-85	BoltM8 × 120	4		
2	GB93-87	Washer8	4		300030010015
3	HZ210A1-640200-G01	Hydraulic proportional valve	1		226400030006
4	GTHZ210C-620400-000	Lower secondary boom cylinder	1		226200010021
5	GTHZ210C-620410-000	Seal assembly	1		

Figure 5-5 Upper secondary boom cylinder

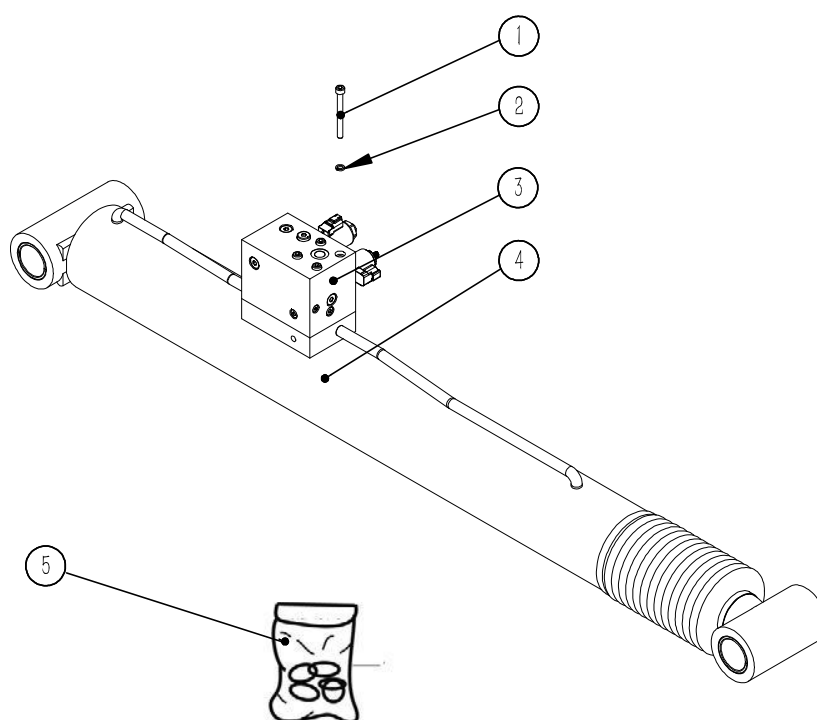


Figure 5-5 Upper secondary boom cylinder

序号 Item No.	代号 Part No.	名称 Description	数量 Qty	备注或适用车型 Remarks or Series No.	物料码 Code No.
1	GB70-85	BoltM8×90	4		
2	GB93-87	Washer8	4		300030010015
3	HZ210A1-640200-G01	Hydraulic proportional valve	1		226400030006
4	GTHZ210C-620500-000	Upper secondary boom cylinder	1		226200010022
5	GTHZ210C-620510-000	Seal assembly	1		

Figure5-6 Telescopic boom cylinder

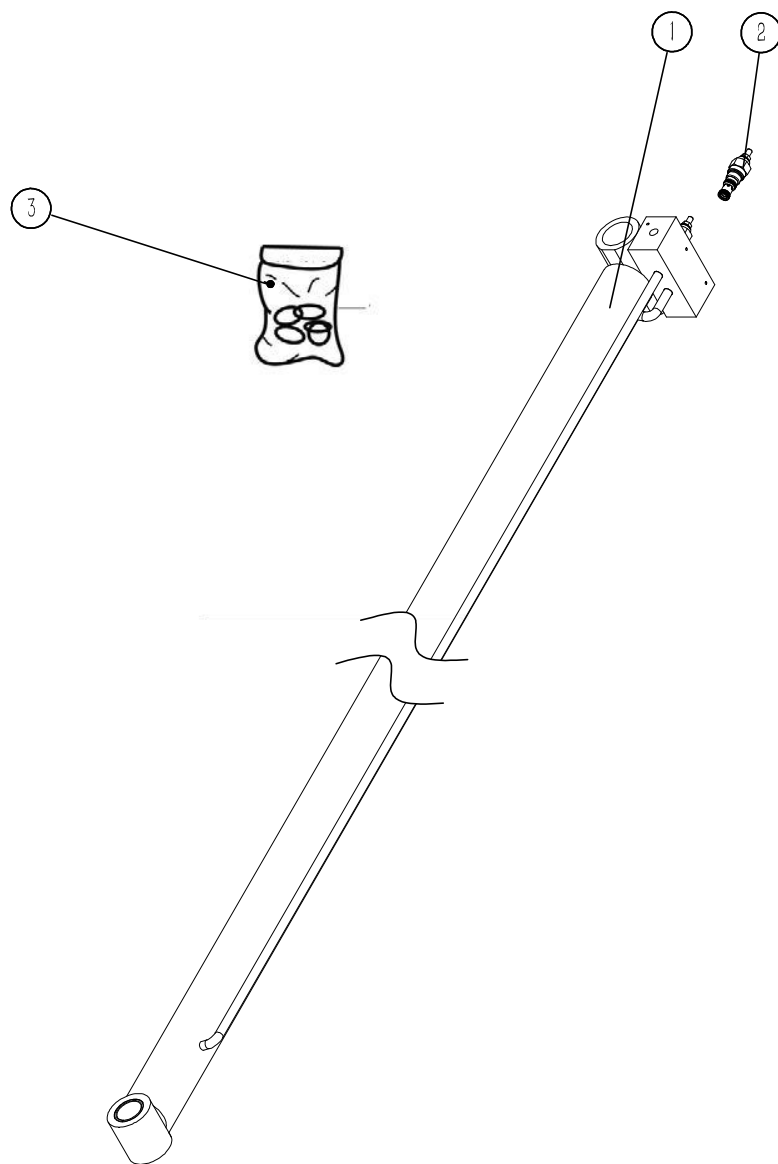


Figure5-6 Telescopic boom cylinder

序号 Item No.	代号 Part No.	名称 Description	数量 Qty	备注或适用车型 Remarks or Series No.	物料码 Code No.
1	GTHZ210C-620800-000	Telescopic boom cylinder	1		226200030002
2	HZ210A1-640810-G01	Oscillation valve	2		226400080006
3	GTHZ210C-620810-000	Seal assembly	1		

Figure5-7 Upper Leveling cylinder

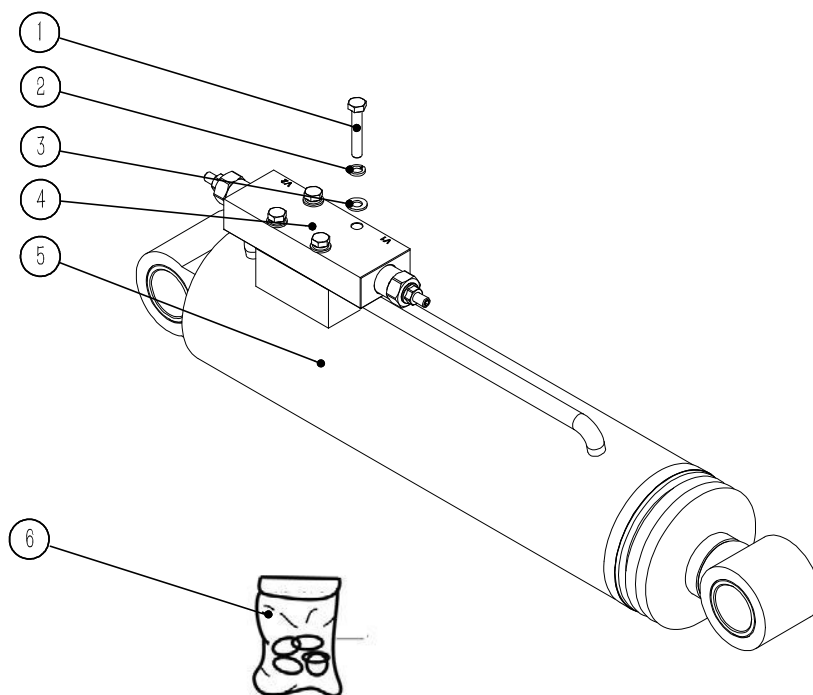


Figure 5-7 Upper Leveling cylinder

序号 Item No.	代号 Part No.	名称 Description	数量 Qty	备注或适用车型 Remarks or Series No.	物料码 Code No.
1	GB5783-86	Bolt M8 × 40	4		
2	GB93-87	Washer 8	4		300030010015
3	GB97.1-85	Washer 8	4		300030040014
4	HZ210A1-640400-G01	Balance valve	1		226400040017
5	GTHZ210C-620700-001	Upper Leveling cylinder	1		226200050011
6	GTHZ210C-620710-000	Seal assembly	1		

Figure 5—8 Jib cylinder

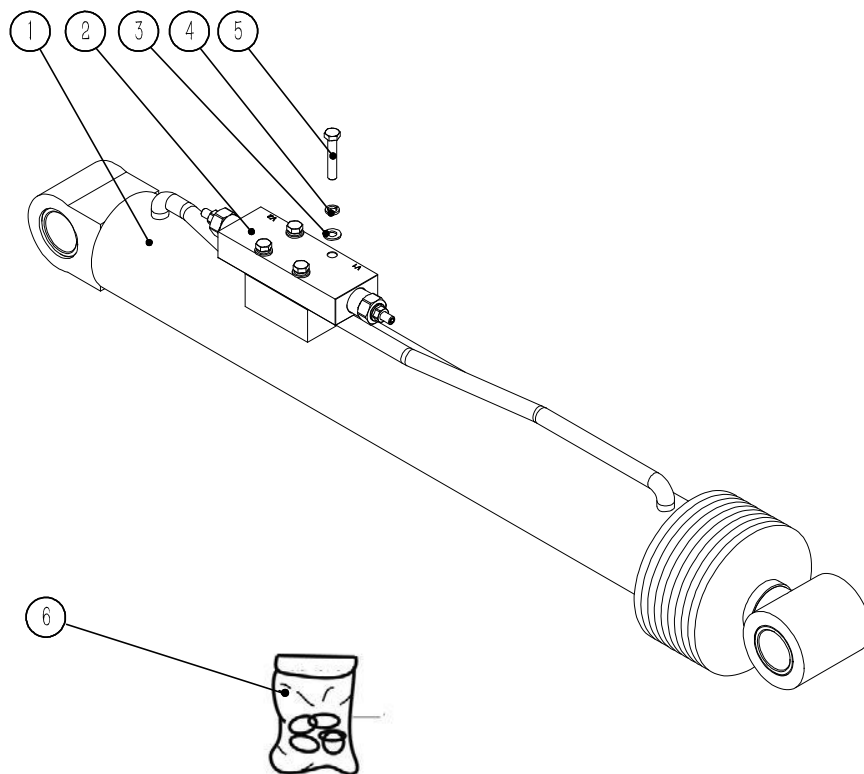


Figure 5—8 Jib cylinder

序号 Item No.	代号 Part No.	名称 Description	数量 Qty	备注或适用车型 Remarks or Series No.	物料码 Code No.
1	GTHZ210C-620900-001	Jib cylinder	1		226200010029
2	HZ210AI-640400-G01	Balance valve	1		226400040017
3	GB97.1-85	Washer 8	4		300030040014
4	GB93-87	Washer 8	4		300030010015
5	GB5783-86	Bolt M8 × 40	4		
6	GTHZ210C-620910-001	Seal assembly	1		

Chapter 6 electrical system

Figure6-1 Cable Assembly

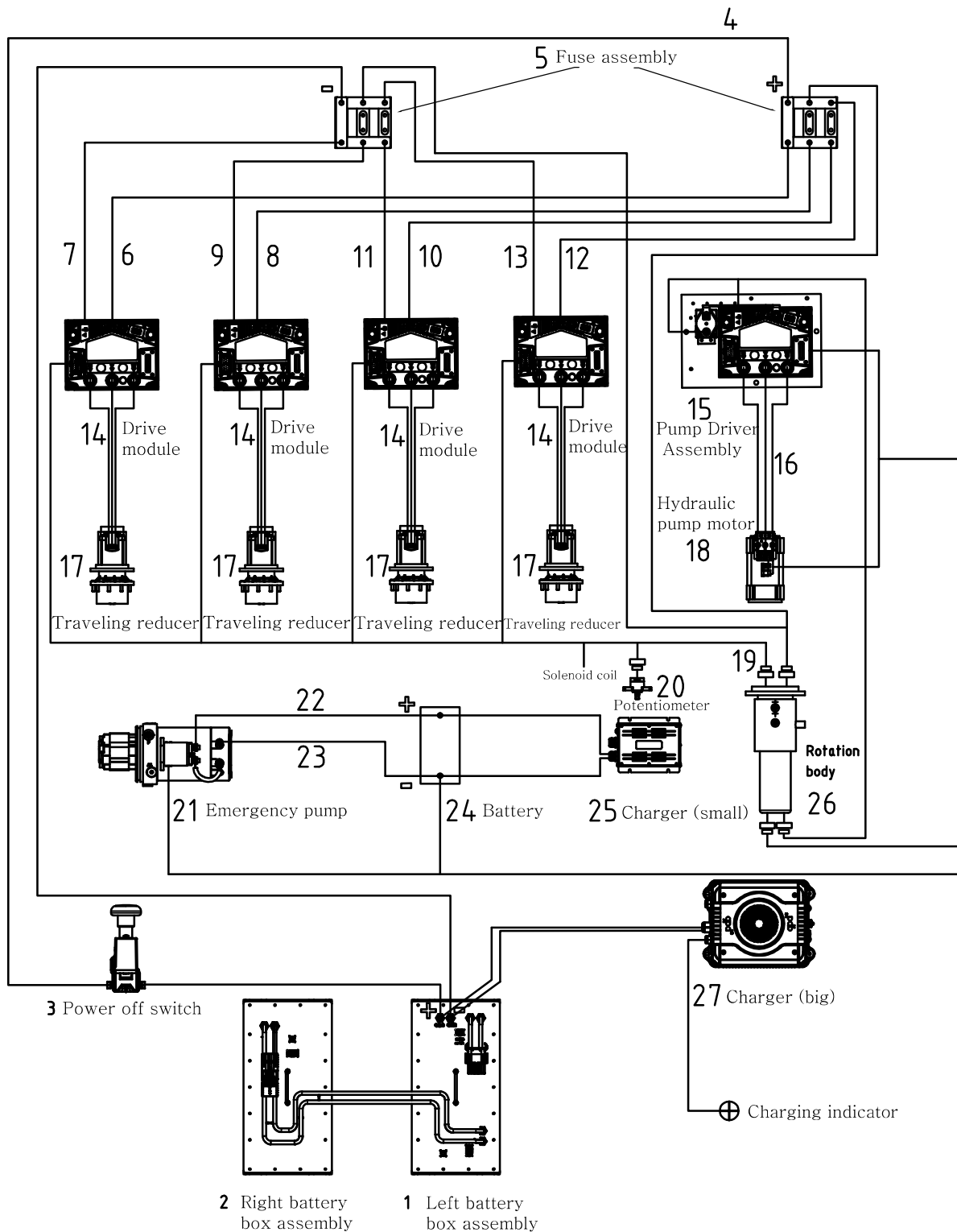


Figure 6—1 Cable Assembly

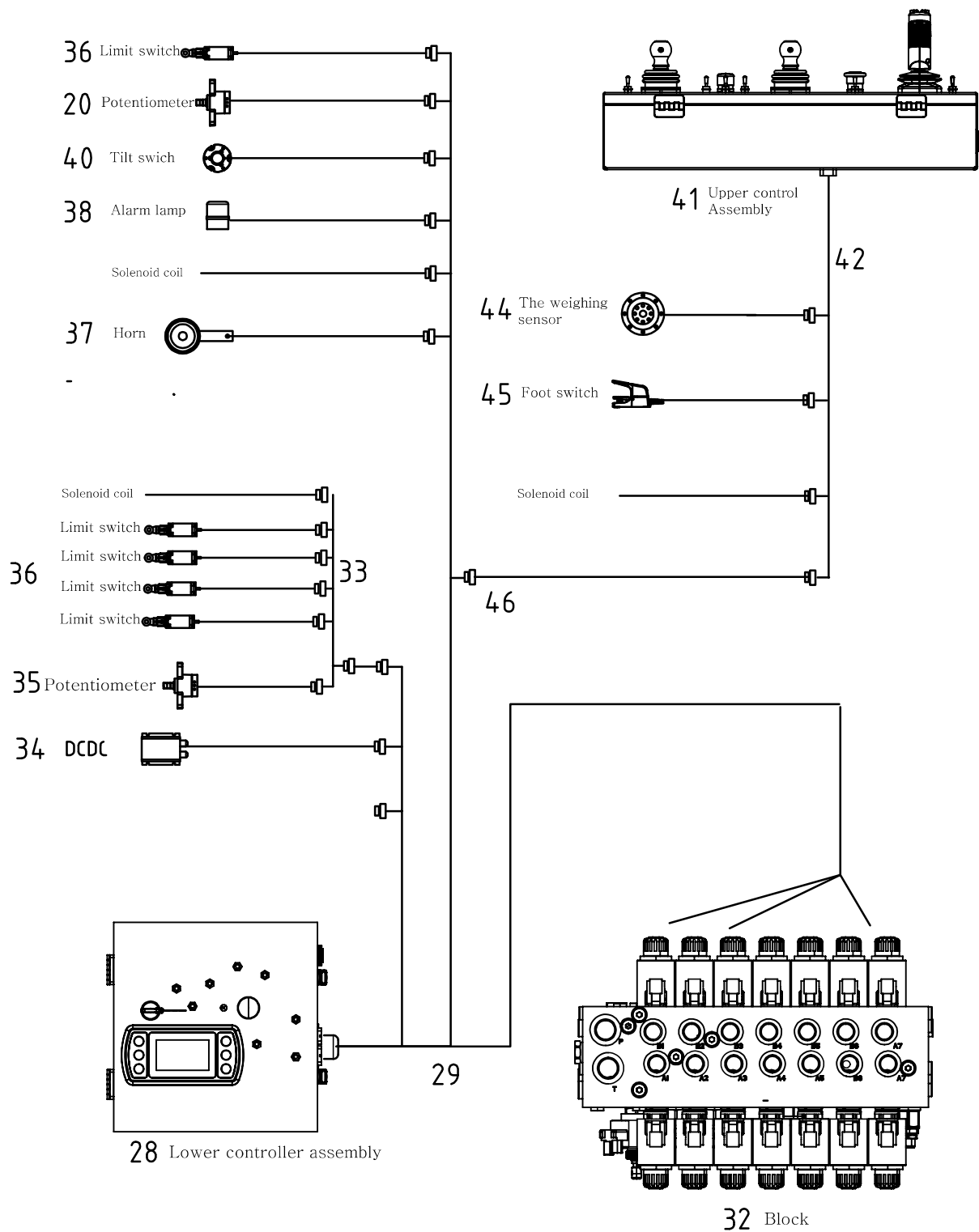


Figure 6—1 Cable Assembly

序号 Item No.	代号 Part No.	名称 Description	数量 Qty	备注或适用车型 Remarks or Series No.	物料码 Code No.
1	GTHZ210C-760100-000	Left battery box assembly	1		227600030007
2	GTHZ210C-760200-000	Right battery box assembly	1		227600030006
3	GTHZ170C-750100-G00	Power off switch	1		227200010003
4	GTHZ210C-730100-000	Cable	1		227300010123
5		Fuse assembly	1	See the figure for details6-3	
6	GTHZ210C-730200-000	Cable	1		227300010124
7	GTHZ210C-730300-000	Cable	1		227300010125
8	GTHZ210C-730400-000	Cable	1		227300010126
9	GTHZ210C-730500-000	Cable	1		227300010127
10	GTHZ210C-730600-000	Cable	1		227300010128
11	GTHZ210C-730700-000	Cable	1		227300010129
12	GTHZ210C-730800-000	Cable	1		227300010130
13	GTHZ210C-730900-000	Cable	1		227300010131
14	GTHZ210C-750200-G00	Drive module	4		227500020005
15	GTHZ210C-751100-000	Pump Driver Assembly	1		227500020006
16	GTHZ210C-731000-000	Cable	1		227300010133
17	GTHZ210C-130000-G00	Traveling reducer	4		221300000006
18	XPD090-621000-000	Hydraulic pump motor	1		209100020186
19	GTHZ210C-740800-000	Drive Cable Assembly	1		227100010027
20	60XEND-741200-G01	Potentiometer	2		227400010013
21	GTHZ210C-650100-G00	Emergency pump	1		226500010005
22	GTHZ210C-731100-000	Cable	1		227300010134
23	GTHZ210C-731200-000	Cable	1		227300010135
24	60XEND-760100-G00	Battery	1		227600020003
25	GTHZ210C-750800-G00	Charger (small)	1		227800010009
26	GTHZ210C-400900-G00	Rotation body	1		224000000093

Figure6-1 Cable Assembly

序号 Item No.	代号 Part No.	名称 Description	数量 Qty	备注或适用车型 Remarks or Series No.	物料码 Code No.
27	GTHZ210C-750700-G00	Charger (big)	1		227800010008
28	GTHZ210C-710000-001	Lower controller assembly	1	See the figure for details6-4	227500040015
29	GTHZ210C-740100-002	Main cable	1		227100010059
32	GTHZ210C-640101-G00	Block	1		226400010011
33	GTHZ210C-740400-000	Main cable4	1		227100010025
34	GTHZ210C-751300-000	DCDC	1		227000070035
35	HZ210AI-741200-G00	Potentiometer	1		227400010021
36	GTWZ110-750400-G00	Limit switch	5		227200050006
37	N163-700009-000	Horn	1		207900130006
38	AP251-700050-G00	Alarm lamp	1		207600070106
39	NC9717-700500-000	Buzzer Assembly	1		207900120038
40	GTHZ210C-750600-G00	Tilt switch	1		227200080005
41	GTHZ210C-720000-001	Upper control Assembly	1	See the figure for details6-5	227500040024
42	GTHZ210C-740700-002	Upper control box cable	1		227100010060
44	GTHZ210C-750400-G00	The weighing sensor	1		227400050002
45	GTHZ210C-750300-G00	Foot switch	1		227200080004
46	GTHZ210C-740600-000	Handle Transfer cable	1		227100030028

Figure6—2 Pump Driver Assembly

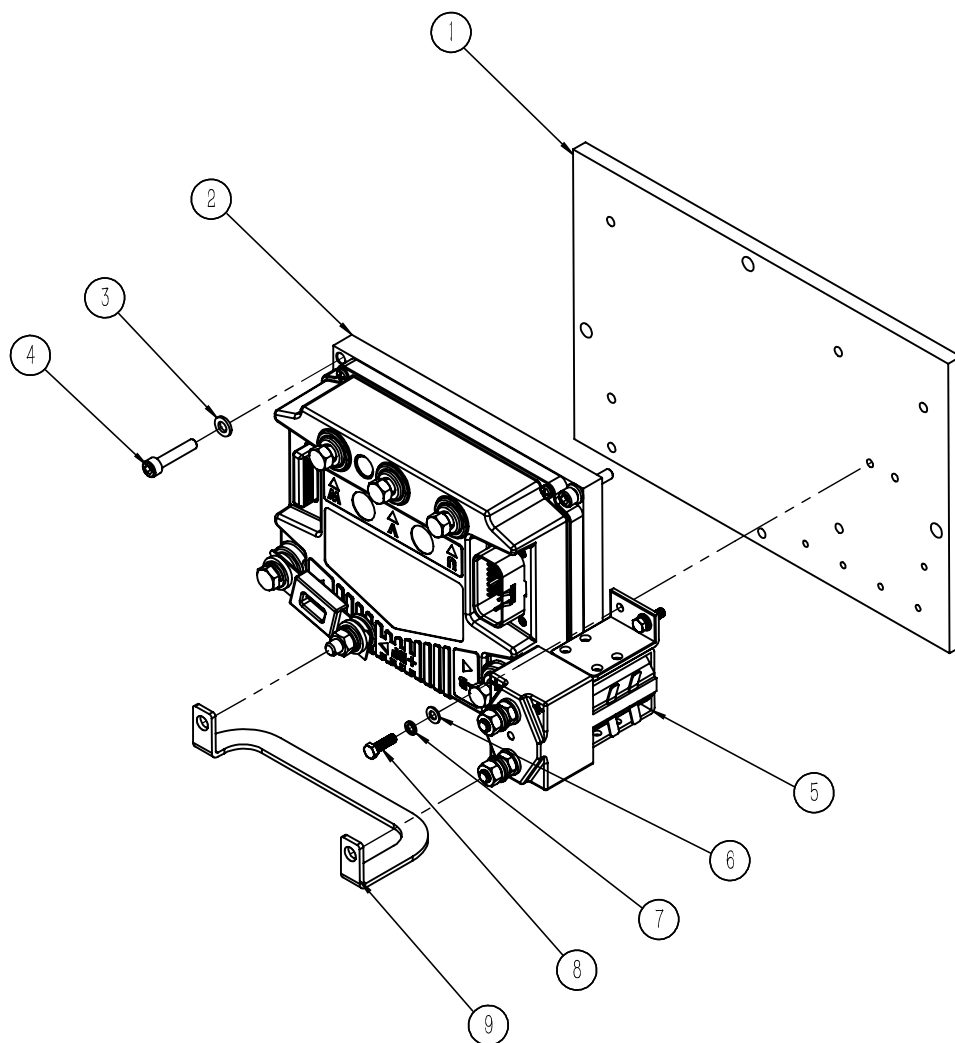


Figure 6-2 Pump Driver Assembly

序号 Item No.	代号 Part No.	名称 Description	数量 Qty	备注或适用车型 Remarks or Series No.	物料码 Code No.
1	GTHZ210C-751104-G00	Al plate	1		227000070033
2	GTHZ210C-750200-G00	Drive module	1		227500020005
3	GB97.1-85	Washer 6	4		300030040013
4	GB/T70.1-2000	Screw M6 × 30	4		300040020048
5	GTHZ210C-751102-G00	Contactoer	1		227500060003
6	GB97.1-85	Washer 5	2		300030040012
7	GB93-87	Washer 5	2		300030010013
8	GB5783-86	Bolt M5 × 16	2		300010040138
9	GTHZ210C-751103-G00	Cu plate	1		227000070032

Figure6—3 Fuse assembly

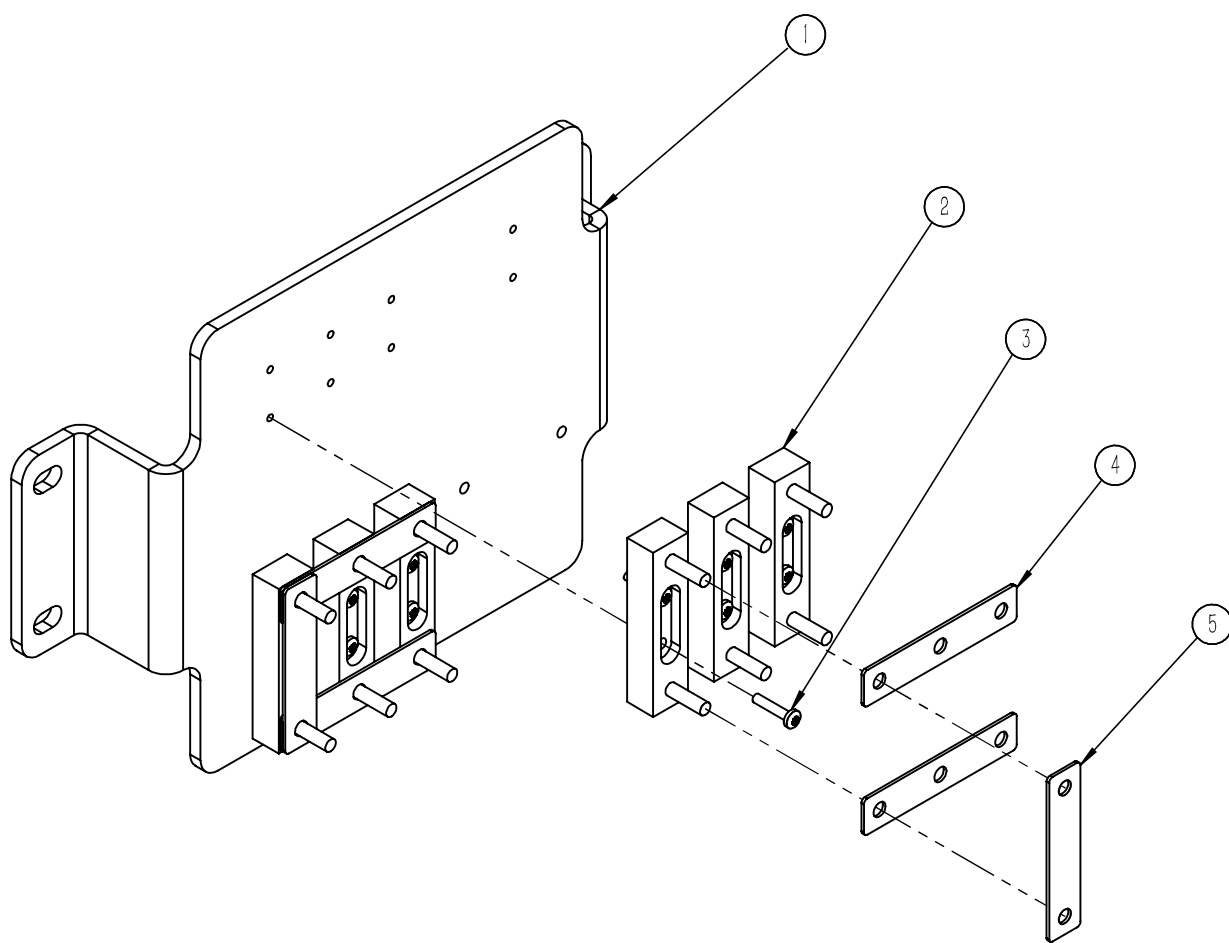


Figure6—3 Fuse assembly

序号 Item No.	代号 Part No.	名称 Description	数量 Qty	备注或适用车型 Remarks or Series No.	物料码 Code No.
1	GTHZ210C-400029-000	Fuse Bracket	1		
2	78XEN-740402-G00	200A Fuse seat	6		227500050007
3	GB818-85	Screw M4 × 20	12		300040070034
4	GTHZ210C-750900-000	Fuse Cu B	4		227000070024
5	GTHZ210C-750500-000	Fuse Cu A	2		227000070023

Figure6—4 Lower controller assembly

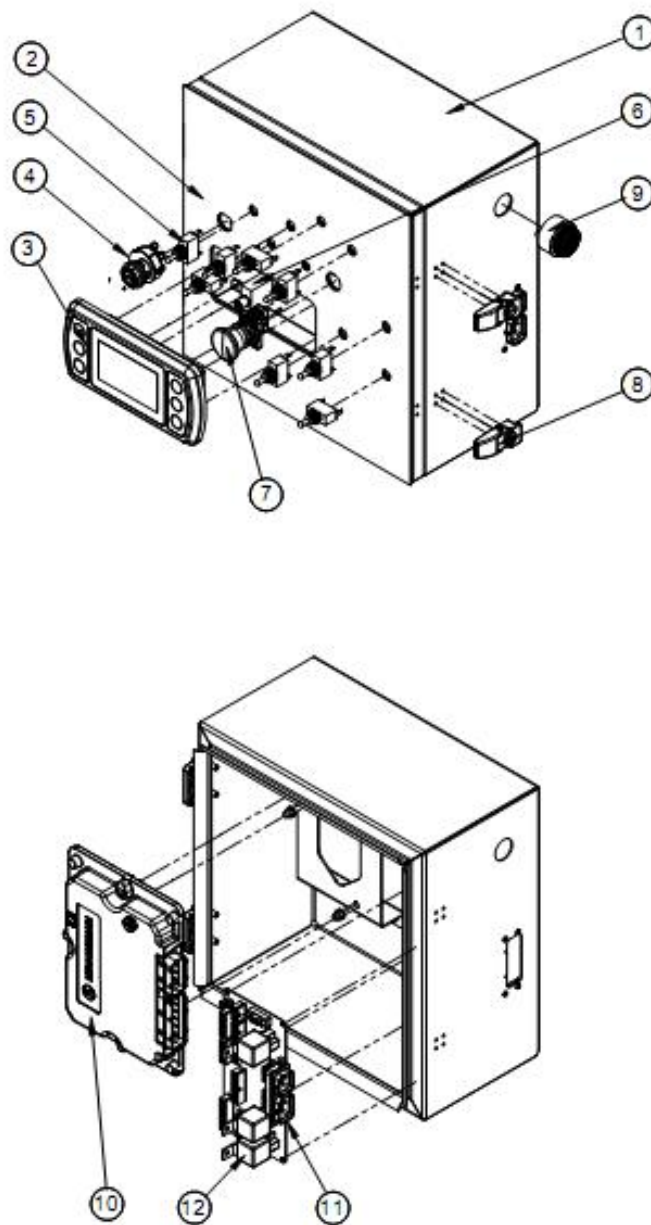


Figure6-4 Lower controller assembly

序号 Item No.	代号 Part No.	名称 Description	数量 Qty	备注或适用车型 Remarks or Series No.	物料码 Code No.
1	GTHZ210C-710000-001	base control cox complete			
2	GTHZ210C-710100-000	sticker	1		
3	GTHZ210C-710200-000	LED screen	1		
4	GTHZ210C-710300-000	Key switch	1		
5	GTHZ210C-720500-000	shift switch	8		
6	GTHZ210C-710400-000	button	1		
7	GTHZ210C-720900-000	Emergency switch	1		
8	GTHZ210C-721600-000	lock	2		
9	GTHZ210C-720600-000	beeper	1		
10	GTHZ210C-710500-000	base controller	1		
11	GTHZ210C-710600-000	module	1		
12	GTHZ210C-710700-000	relay	3		

Figure6—5 Upper control Assembly

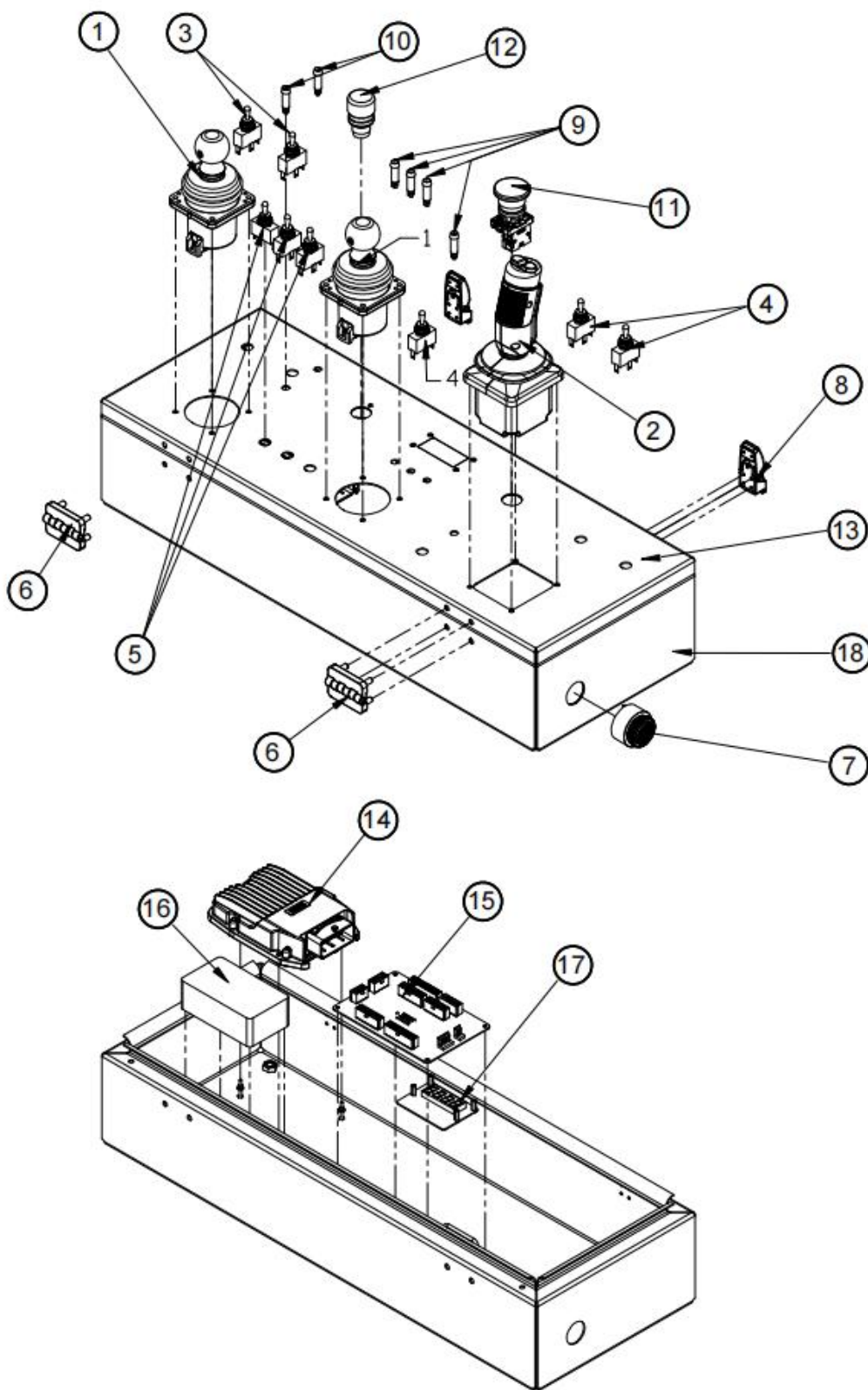


Figure6—5 Upper control Assembly

序号 Item No.	代号 Part No.	名称 Description	数量 Qty	备注或适用车型 Remarks or Series No.	物料码 Code No.
1	GTHZ210C-720100-000	joystick	2		
2	GTHZ210C-720200-000	joystick	1		
3	GTHZ210C-720300-000	Shift switch	2		
4	GTHZ210C-720400-000	Shift switch	3		
5	GTHZ210C-720500-000	Shift switch	3		
6	GTHZ210C-721500-000	hinge	2		
7	GTHZ210C-720600-000	beeper	1		
8	GTHZ210C-721600-000	lock	2		
9	GTHZ210C-720700-000	indicator	4		
10	GTHZ210C-720800-000	indicator	2		
11	GTHZ210C-720900-000	emergency switch	1		
12	GTHZ210C-721300-000	button	1		
13	GTHZ210C-721400-000	sticker	1		
14	GTHZ210C-721000-000	basket controller	1		
15	GTHZ210C-721700-000	module	1		
16	GTHZ210C-721100-000	pressure transmitter	1		
17	GTHZ210C-721200-000	screen	1		
18	GTHZ210C-720000-001	basket control box complete			

Chapter 7 adhesive signs

Figure7-1 adhesive signs

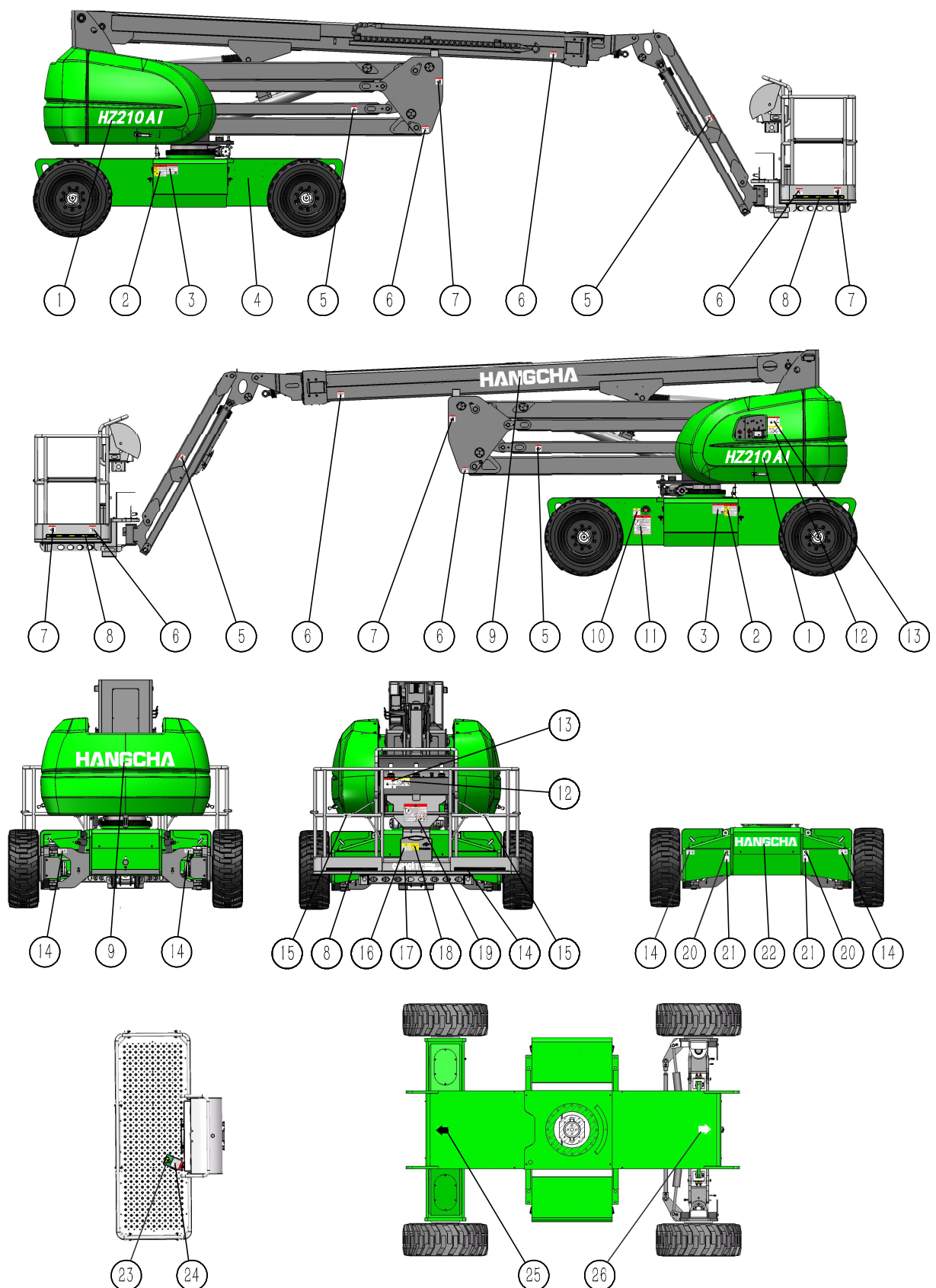


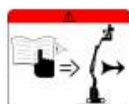
Figure7-1 adhesive signs

序号 Item No.	代号 Part No.	名称 Description	数量 Qty	备注或适用车型 Remarks or Series No.	物料码 Code No.
1	GTHZ210C-020015-000	adhesive	2		
2	HV110D-020017-100	adhesive	2		
3	GTHZ210C-020008-100	adhesive	2		
4	78XEN-910001-000	adhesive	1		
5	GTHZ120-020014-100	adhesive	4		
6	GTHZ120-020016-000	adhesive	6		220200040007
7	GTHZ120-020015-000	adhesive	4		220200040009
8	78XEN-020009-000	adhesive	6		220200040091
9	GTHZ120-020021-000	adhesive	2		220200080005
10	GTHZ210C-020009-000	adhesive	1		220200040097
11	GTHZ210C-020011-100	adhesive	1		
12	GTHZ120-020008-000	adhesive	2		220200040003
13	GTHZ120-020005-100	adhesive	2		
14	GTHZ210C-020012-000	adhesive	4		220200080024
15	78XEN-020024-000	adhesive	4		220200040051
16	GTHZ210C-020004-100	adhesive	1		
17	GTHZ210C-020003-100	adhesive	1		
18	GTHZ120-020004-000	adhesive	1		220200080004
19	GTHZ210C-020005-100	adhesive	1		
20	R960-020035-001	adhesive	4		200200150141
21	GTWZ110-020013-000	adhesive	4		220200050022
22	GTHZ120-020022-000	adhesive	1		220200080006
23	GTHZ210C-020016-000	adhesive	1		
24	GTHZ210C-020010-000	adhesive	1		220200040098
25	GTHZ120-020007-000	adhesive	1		220200080002
26	GTHZ120-020006-000	adhesive	1		220200080001

HZ210A1



HANGCHA



CAPACITY • 255 kg
• 350 kg (LTD)

